

CERTIFICATE

CERTIFIED LAND CORNER

No. 115

21904312000

I, William C. Jung, do hereby certify that on the 9th day of November 1979, I found (evidence) (no evidence) of the West 1/4 corner of Section 32, T19 N, R 4 W, Fourth Principal Meridian, and I re-established said corner according to the Wisconsin Statutes as shown and described hereon.

History of original corner establishment:

None recorded since the original government survey.

Description of corner evidence found:

Set a Harrison monument on line and equidistant between the section corners.

Dated this 3rd day of Feb. 1981.

William C. Jung (signature)

William C. Jung, R.L.S. 1323

Approved: HARLEY A. SIME MONROE CO. SURVEYOR

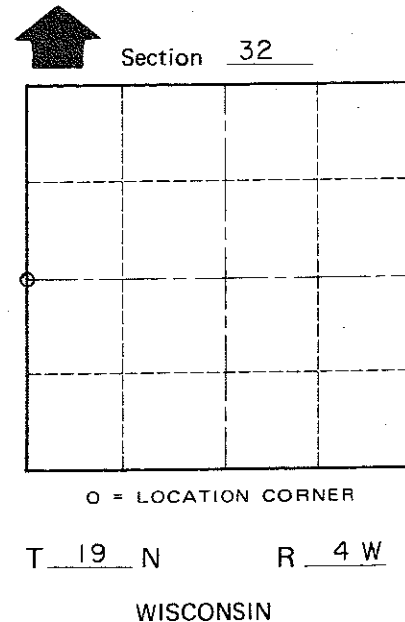
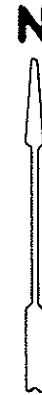
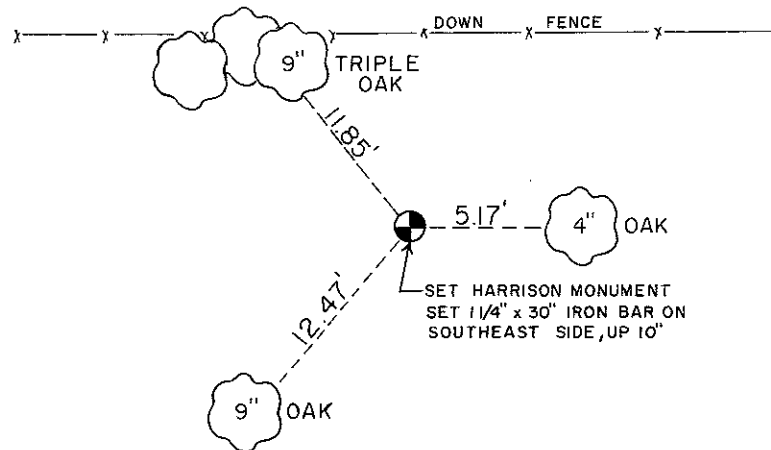
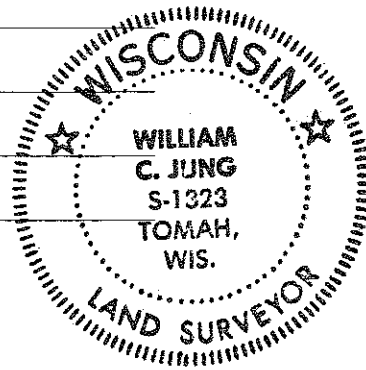
Description of corner and witness monuments, references and accessories used to perpetuate the original or re-established location of this corner:

COUNTY SURVEYOR FORM NO. 1

Witnesses to corner location:

Jung
Pietz
Tormoen

NOTE: TREES BLAZED DOUBLED WITH NAIL & CAPS SET



SURVEY CONTROL ORDER

Horizontal
Vertical

WISCONSIN COORDINATE SYSTEM

Table with columns: Corner, Control Sta. Name, East (X), North (Y), Elevation (Z), Zone

or Town Little Falls
County of Monroe