

CERTIFICATE

CERTIFIED LAND CORNER

No. 131

21904310000

I, William C. Jung, do hereby certify that on the First day of November 1979, I found (evidence) ~~(no evidence)~~ of the Southwest corner of Section 32, T 19 N, R 4 W, Fourth Principal Meridian, and I re-established said corner according to the Wisconsin Statutes as shown and described hereon.

Dated this 3rd day of Feb. 1981.

William C. Jung

William C. Jung, R.L.S. 1323

History of original corner establishment:

Fred Holden reestablished this corner in April of 1906. He later set a buggy axle at this corner in April of 1908. Duane Marten set a pipe at this corner in December of 1973. He did not find a buggy axle. Marten later used this corner again in his survey of September, 1974, as did Garold Sime in his surveys

Description of corner evidence found: of July and September, 1977.

Found the corner of record, removed the pipe and replaced it with a Harrison marker.

Approved: **HARLEY A. SIME**  
**MONROE CO. SURVEYOR**

COUNTY SURVEYOR FORM NO. 1

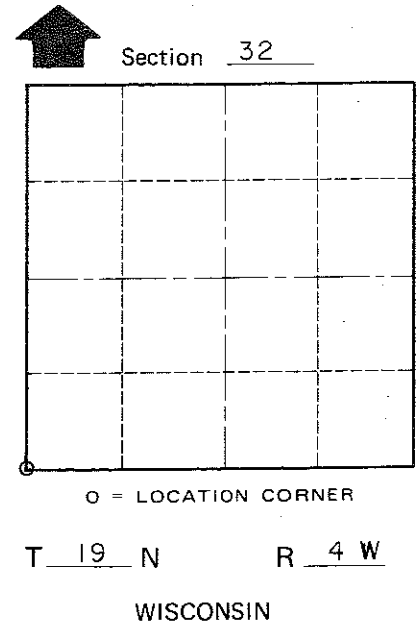
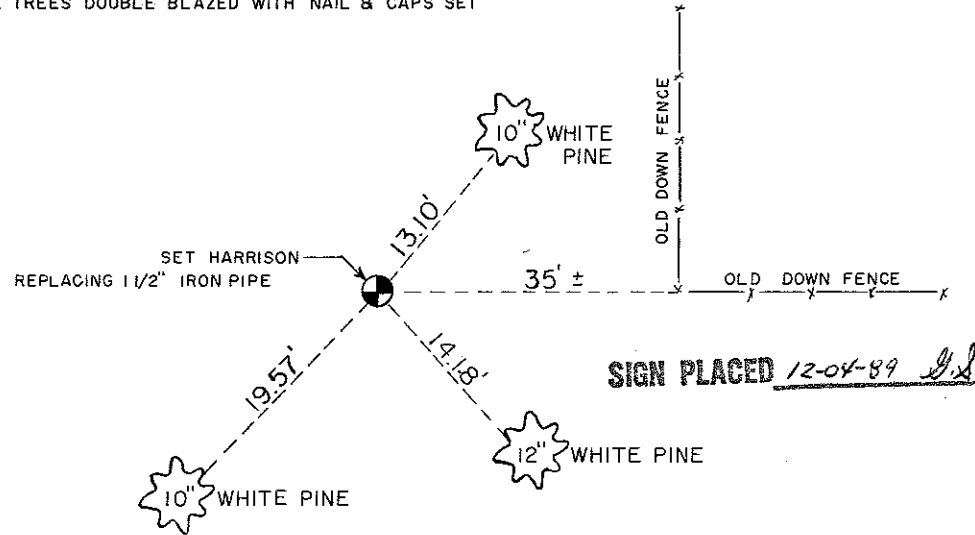
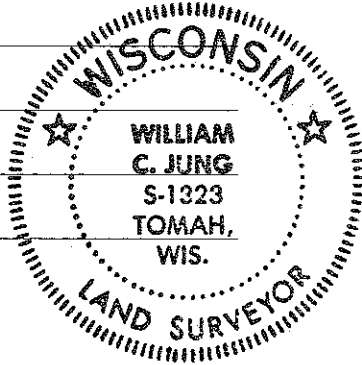
Description of corner and witness monuments, references and accessories used to perpetuate the original or re-established location of this corner:

NOTE: CORNER FALLS IN A WHITE PINE PLANTATION  
ALL TREES DOUBLE BLAZED WITH NAIL & CAPS SET

Witnesses to corner location:

Jung

Pietz



SURVEY CONTROL ORDER

Horizontal \_\_\_\_\_  
Vertical \_\_\_\_\_

WISCONSIN COORDINATE SYSTEM

Corner	East (X)	North (Y)	Elevation (Z)	Zone
Control Sta. Name				

\_\_\_\_\_ or Town Little Falls

County of Monroe