

CERTIFICATE

CERTIFIED LAND CORNER

No. 95

21904302000

I, William C. Jung, do hereby certify that on the 9th day of November 1979, I found (evidence) (no evidence) of the West 1/4 corner of Section 29, T 19 N, R 4 W, Fourth Principal Meridian, and I re-established said corner according to the Wisconsin Statutes as shown and described hereon.

Dated this 3rd day of Feb. 1981.

William C. Jung

William C. Jung, R.L.S. 1323

History of original corner establishment:

Schroeder (?) set a post at this corner in may of 1886. Fred Holden was at this corner in December of 1903 and found one 1886 bearing tree.

Description of corner evidence found:

Accepted the intersection of the existing line fences as the best available evidence of the original government survey and set a Harrison marker. This location fits the West line of the SW1/4 very well.

Approved: HARLEY A. SIME MONROE CO. SURVEYOR

Description of corner and witness monuments, references and accessories used to perpetuate the original or re-established location of this corner:

Witnesses to corner location:

Jung
Pietz
Tormoen

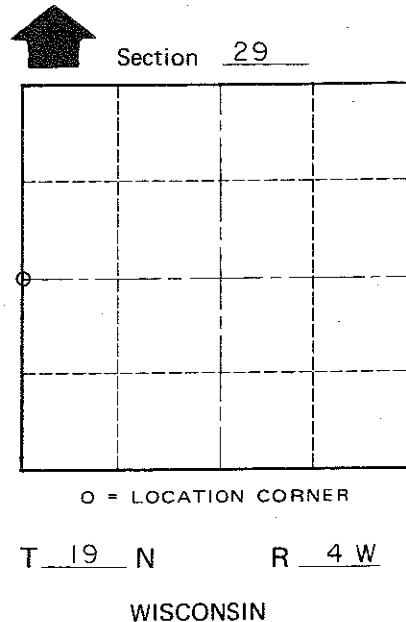
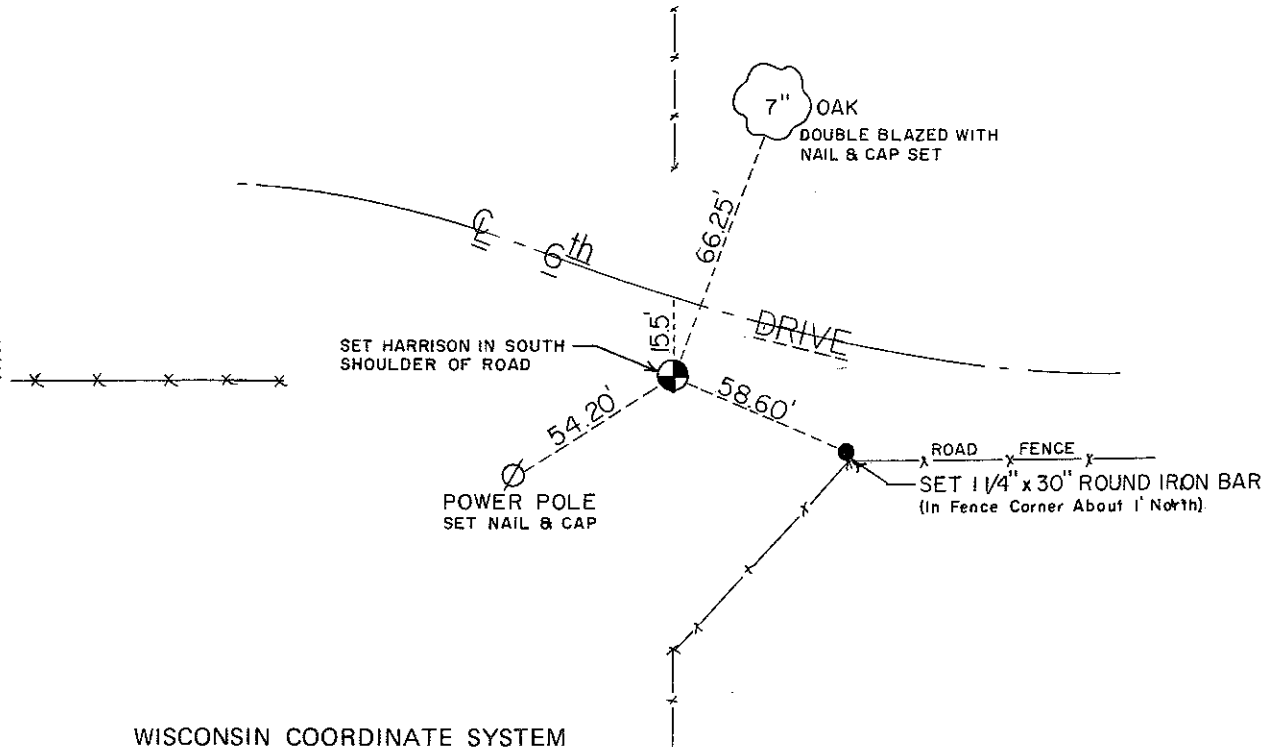
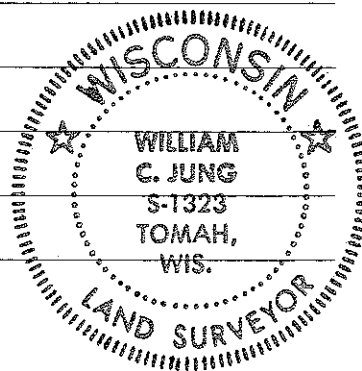


Table with 2 rows: Horizontal, Vertical

Table with 5 columns: Corner, Control Sta. Name, East (X), North (Y), Elevation (Z), Zone

or Town Little Falls
County of Monroe

COUNTY SURVEYOR FORM NO. 1