

CERTIFICATE

I, William C. Jung, do hereby certify that on the 9<sup>th</sup> day of November 19 79, I found (evidence) ~~(no evidence)~~ of the Center 1/4 corner of Section 29, T 19 N, R 4 W, Fourth Principal Meridian, and I re-established said corner according to the Wisconsin Statutes as shown and described hereon.

Dated this 3rd day of Feb. 19 81.

*William C. Jung*

William C. Jung, R.L.S. 1323

Approved: <sup>Title</sup> **HARLEY A. SIME**  
**MONROE CO. SURVEYOR**

Description of corner and witness monuments, references and accessories used to perpetuate the original or re-established location of this corner:

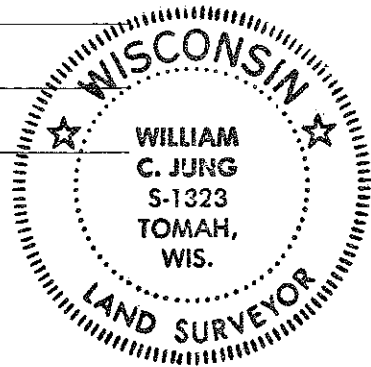
Witnesses to corner location:

Jung

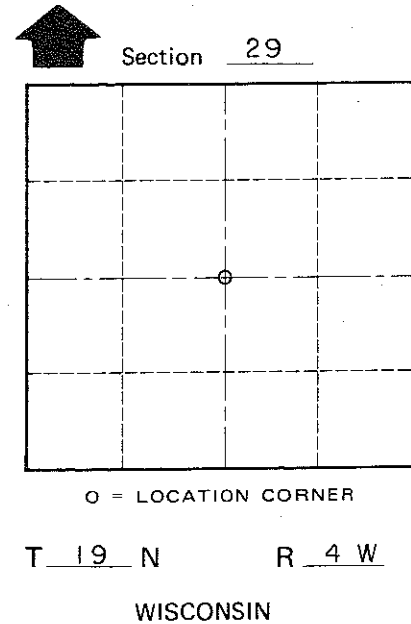
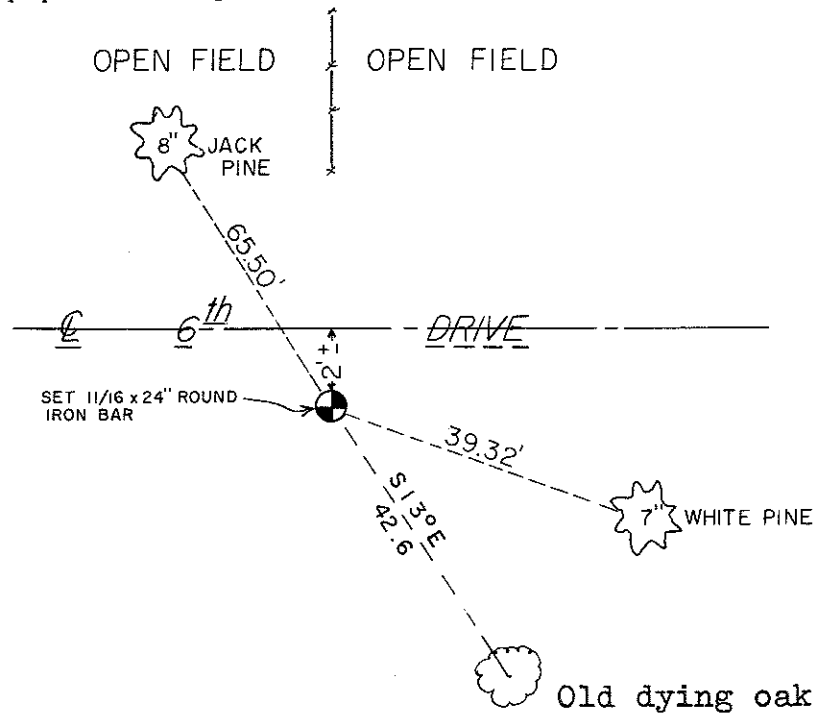
Pietz

Tormoen

COUNTY SURVEYOR FORM NO. 1



NOTE: TREES DOUBLE BLAZED WITH NAIL & CAPS SET



CERTIFIED LAND CORNER

No. 95 B

**21904292020**

History of original corner establishment:  
This corner was set in a survey of May, 1886, by Schroeder (?).

Description of corner evidence found:  
Reset the corner by using an old 1886 bearing tree.

SURVEY CONTROL ORDER

Horizontal \_\_\_\_\_

Vertical \_\_\_\_\_

WISCONSIN COORDINATE SYSTEM

Corner	East (X)	North (Y)	Elevation (Z)	Zone
Control Sta. Name				

\_\_\_\_\_ or Town Little Falls

County of Monroe