

CERTIFICATE

CERTIFIED LAND CORNER

No. 97

21904282000

I, Harley A. Sime, do hereby certify that on the 18 day of June 19 76, I found ~~#####~~ (no evidence) of the W/4 corner of Section 27, T 19N N, R 4W #, Fourth Principal Meridian, and I re-established said corner according to the Wisconsin Statutes as shown and described hereon.
 Dated this 7TH day of Feb. 19 78.

History of original corner establishment:

No evidence in field since no one was here since the original Government survey.

Description of corner evidence found:

Set at equal distances and on straight line between Sec. corners.

Approved: HARLEY A. SIME

County Surveyor
Title

MONROE CO. SURVEYOR

COUNTY SURVEYOR FORM NO. 1

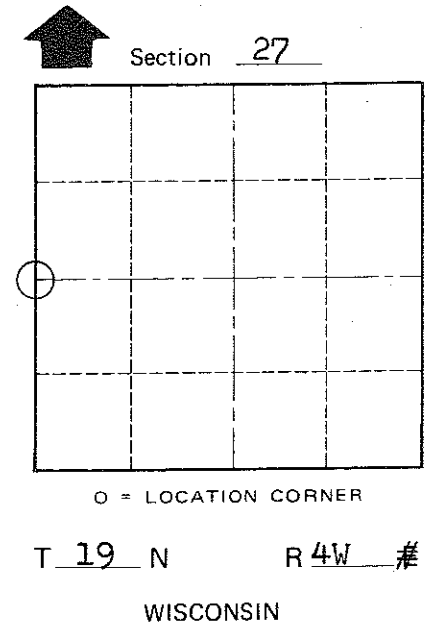
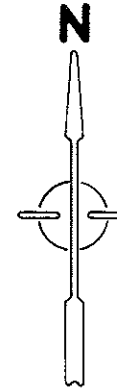
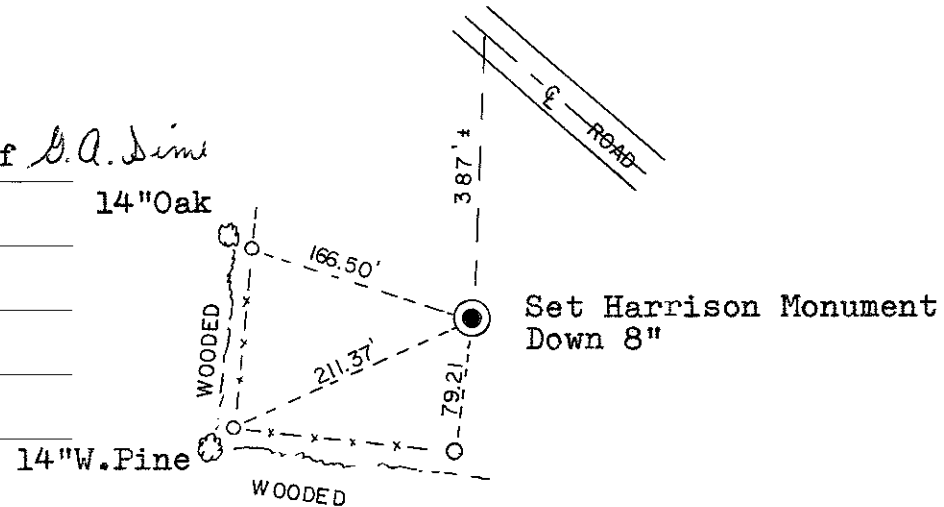
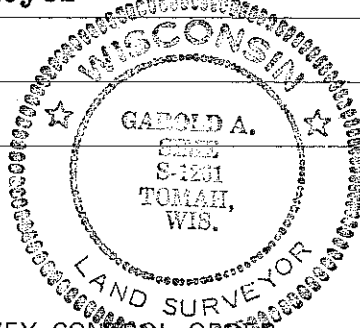
Description of corner and witness monuments, references and accessories used to perpetuate the original or re-established location of this corner:

Witnesses to corner location:

Garold A. Sime, Crew Chief *G.A. Sime*

D. Dade

B. Meyer



○ = Set 3/4" Iron Bar

SURVEY CONTROL ORDER

Horizontal	_____
Vertical	_____

WISCONSIN COORDINATE SYSTEM

Corner	East (X)	North (Y)	Elevation (Z)	Zone
Control Sta. Name				

~~#####~~ or Town Little Falls

County of Monroe