

CERTIFICATE

CERTIFIED LAND CORNER

No. 97B

21904272020

I, William C. Jung, do hereby certify that on the 27th day of April 1978, I found ~~(evidence)~~ (no evidence) of the 0% corner of Section 27, T 19 N, R 4 W Fourth Principal Meridian, and I re-established said corner according to the Wisconsin Statutes as shown and described hereon.

Dated this 10th day of Jan. 1979.

William C. Jung, R.L.S. 1323

Crew Chief, County Surveyor's
Title Office

History of original corner establishment:

No known recorded history since the original government survey.

Description of corner evidence found:

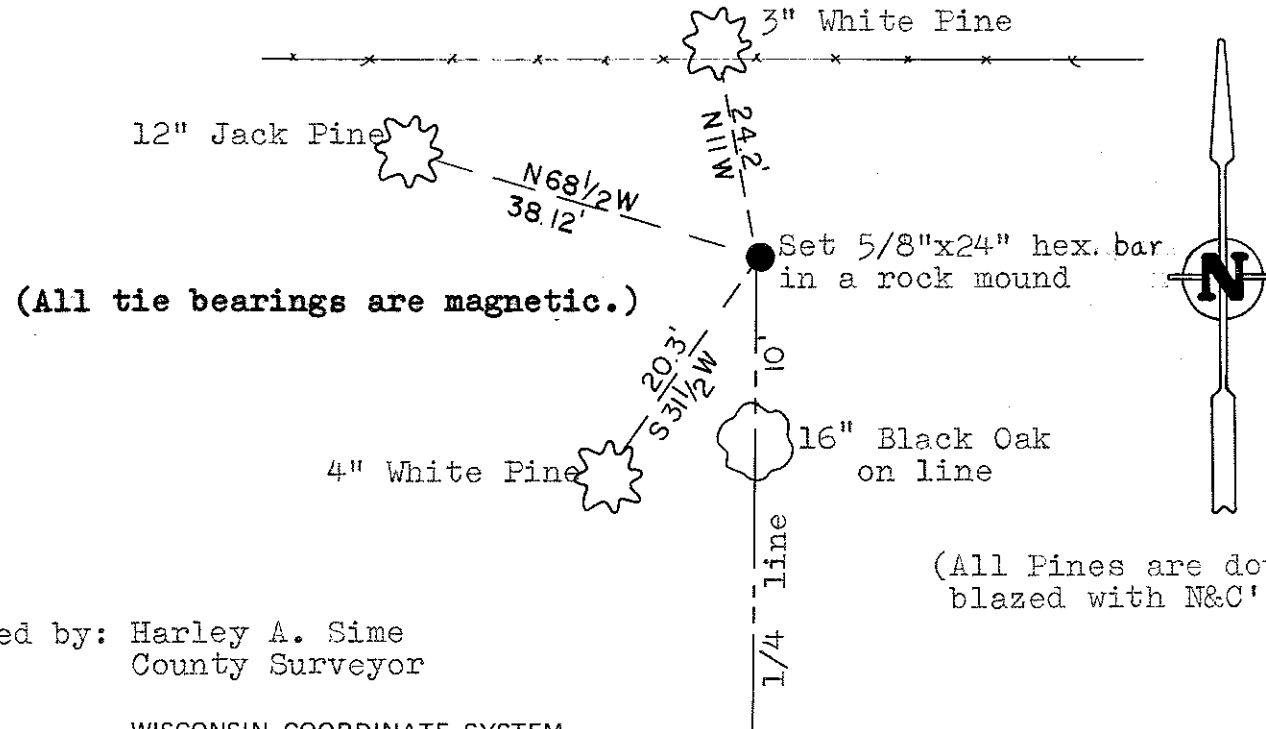
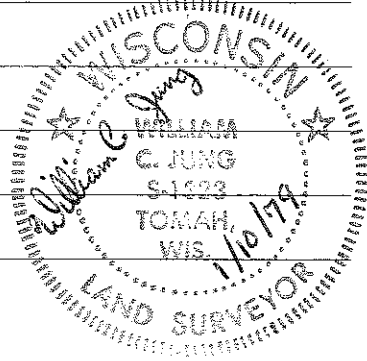
Set the corner at the intersection of the 1/4 lines.

Description of corner and witness monuments, references and accessories used to perpetuate the original or re-established location of this corner:

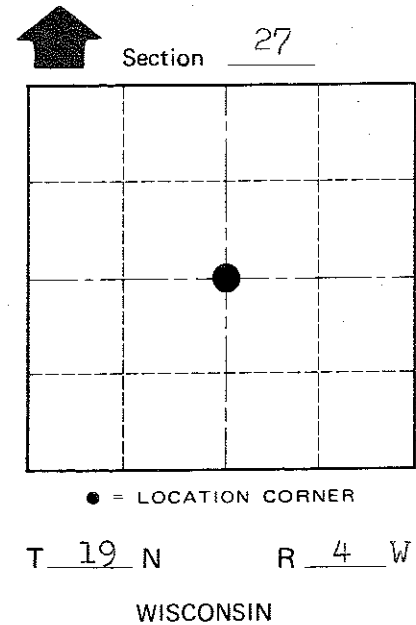
Witnesses to corner location:

W. Jung

G. Dechant



(All Pines are double blazed with N&C's set)



COUNTY SURVEYOR FORM NO. 1

SURVEY CONTROL ORDER

Horizontal	_____
Vertical	_____

Approved by: Harley A. Sime
County Surveyor

WISCONSIN COORDINATE SYSTEM

Corner	East (X)	North (Y)	Elevation (Z)	Zone
Control Sta. Name				

City, Village or Town Little Falls
County of Monroe