

# CERTIFICATE OF LOCATION OF GOVERNMENT CORNER

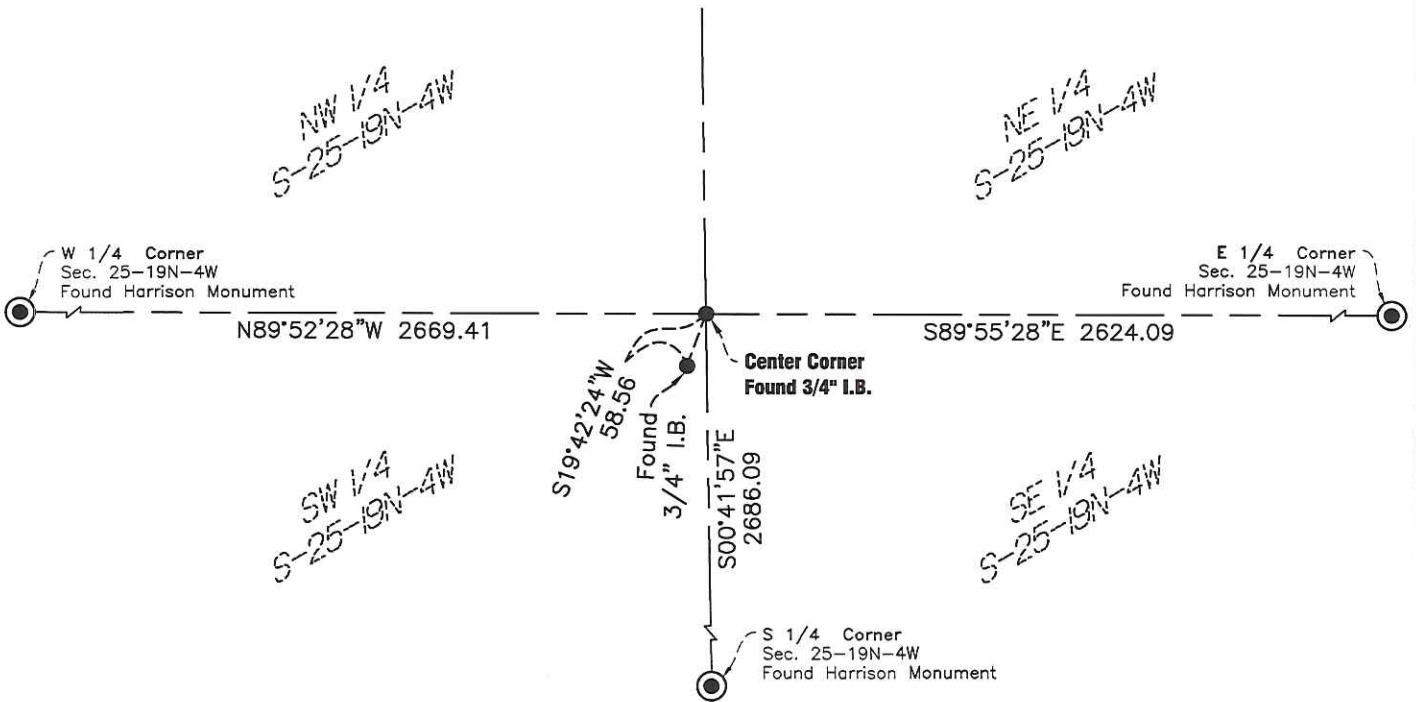
CENTER CORNER OF SECTION 25  
TOWNSHIP 19 NORTH, RANGE 4 WEST, 4TH P.M.  
STATE OF WISCONSIN, COUNTY OF MONROE

On 11-05-15, found a(n): 3/4" Iron Bar located  
six feet east of the edge of a cultivated field,  
on line with a field break to the west.

- left monument as found
- lowered monument
- removed monument (explain)
- raised monument

(reserved for recording data)

On \_\_\_\_\_, set a(n): \_\_\_\_\_



drawn by: JRO



## "SKETCH OF REFERENCE TIES" (not to scale)

Monroe County Coordinates - NAD83 (2011) - Northing = 433943.609 Easting = 628880.739

Geodetic Reference Monuments: NGS DK5153

I hereby certify that this document and the data contained herein was prepared by me or under my direct supervision.

*JRO*  
signature

11-10-15  
date

License No. 3068-8

**ISG**  
Architecture  
Engineering  
Environmental  
Planning  
www.is-gp.com

- County Surveyor
- Deputy County Surveyor
- Professional Land Surveyor

**+S GROUP**

See "Statement of Evidence" for further details (on back)

# *STATEMENT OF EVIDENCE*

*CENTER CORNER OF SECTION 25*

*TOWNSHIP 19 NORTH, RANGE 4 WEST, 4TH P.M.*

*STATE OF WISCONSIN, COUNTY OF MONROE*

1989 — Plat of Survey prepared by H. A. Sime and Associates, on record at the Monroe County Surveyor's Office as CSR 1954, shows a found monument at the center of the section. This is evidence that the corner has been perpetuated and is accepted as the true corner.

*drawn by: JRD*

INDEX NO.

PAGE 2 OF 2