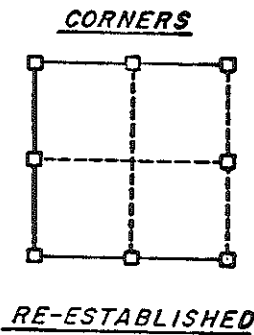
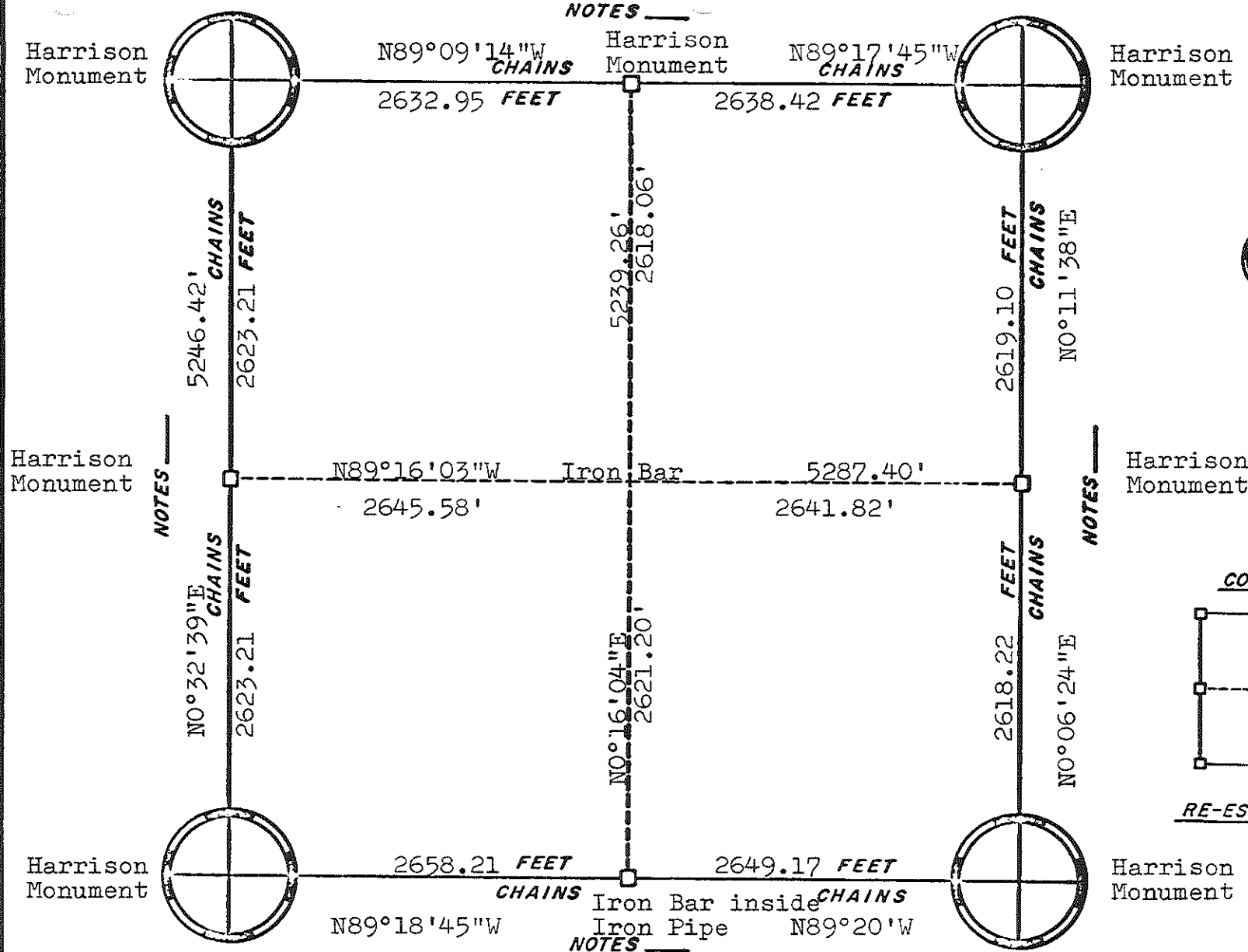


ORIGINAL SURVEY DATA

SURVEYED BY W. C. Jung	CONTRACT DATE Surveyed: Nov. '75 April 1978	COUNTY MONROE	TOWN-VILLAGE-CITY Little Falls	SECTION 21	TOWNSHIP 19N	RANGE 4W
---------------------------	---	---------------	-----------------------------------	---------------	-----------------	-------------

NOTES _____

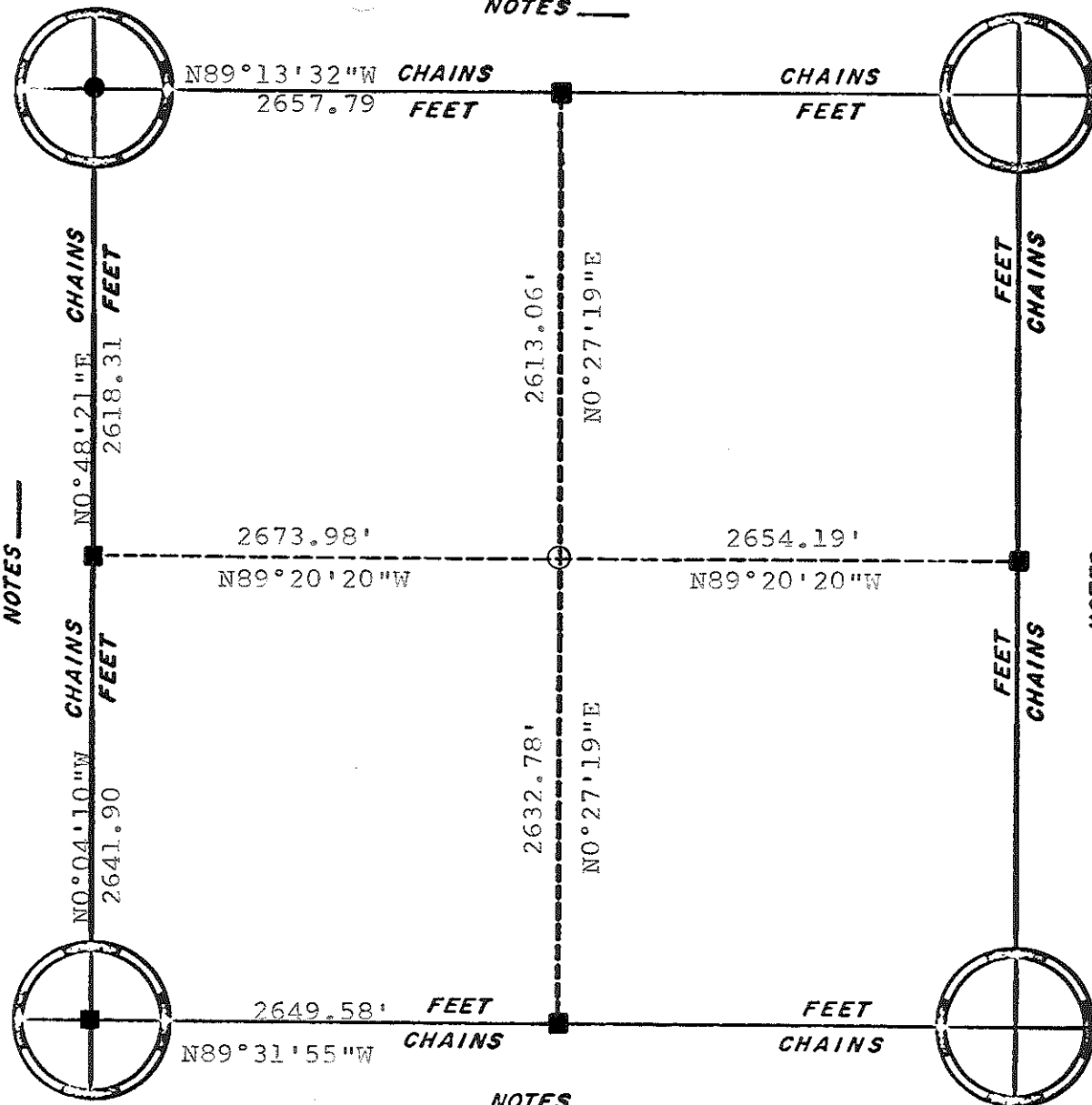


ORIGINAL SURVEY DATA

BY _____
DATE _____

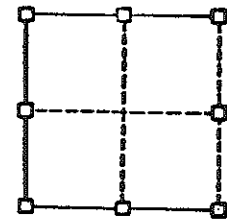
SURVEYED BY	CONTRACT DATE	COUNTY	MONROE	TOWN-VILLAGE-CITY	SECTION	TOWNSHIP	RANGE
G. A. Sime	June 1976			Little Falls	27	19N	4W

NOTES _____



- = Ex. Harrison
- = Set Harrison
- = Set 1 1/2" x 30" round iron bar

CORNERS



RE-ESTABLISHED

NOTES _____

NOTES _____

NOTES _____

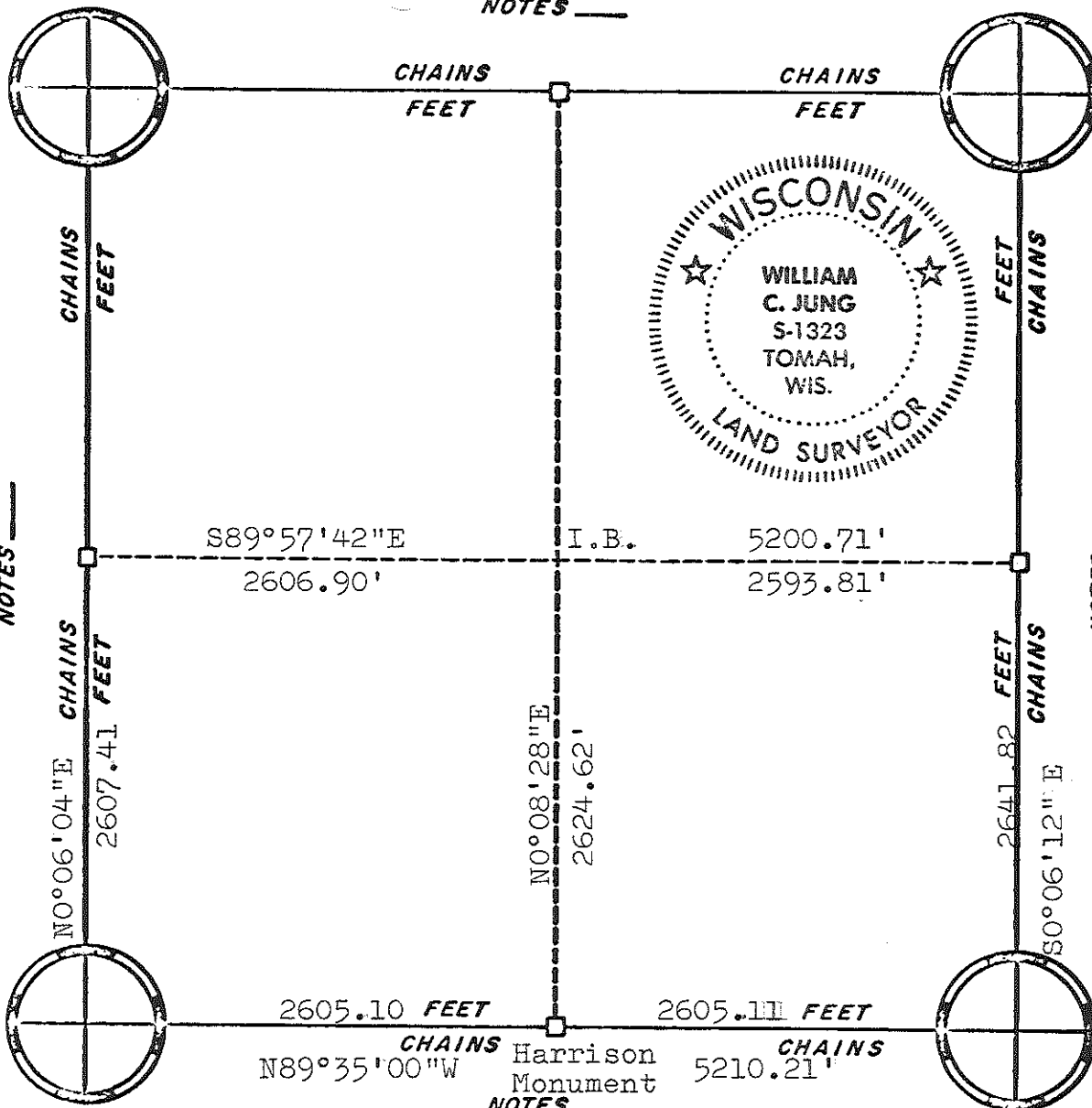
ORIGINAL SURVEY DATA

BY _____

DATE _____

SURVEYED BY Lawrence A. Feddersen	CONTRACT DATE July 28, 1982	COUNTY MONROE [REDACTED]	TOWN-VILLAGE-CITY Little Falls	SECTION 28	TOWNSHIP 19N	RANGE 4W
---	--------------------------------	-----------------------------	-----------------------------------	---------------	-----------------	-------------

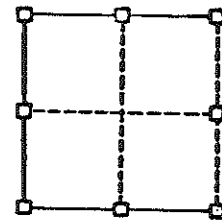
NOTES



NOTES Harrison Monument

NOTES Harrison Monument

CORNERS



RE-ESTABLISHED

Harrison Monument

Harrison Monument

Harrison Monument

NOTES

NOTES

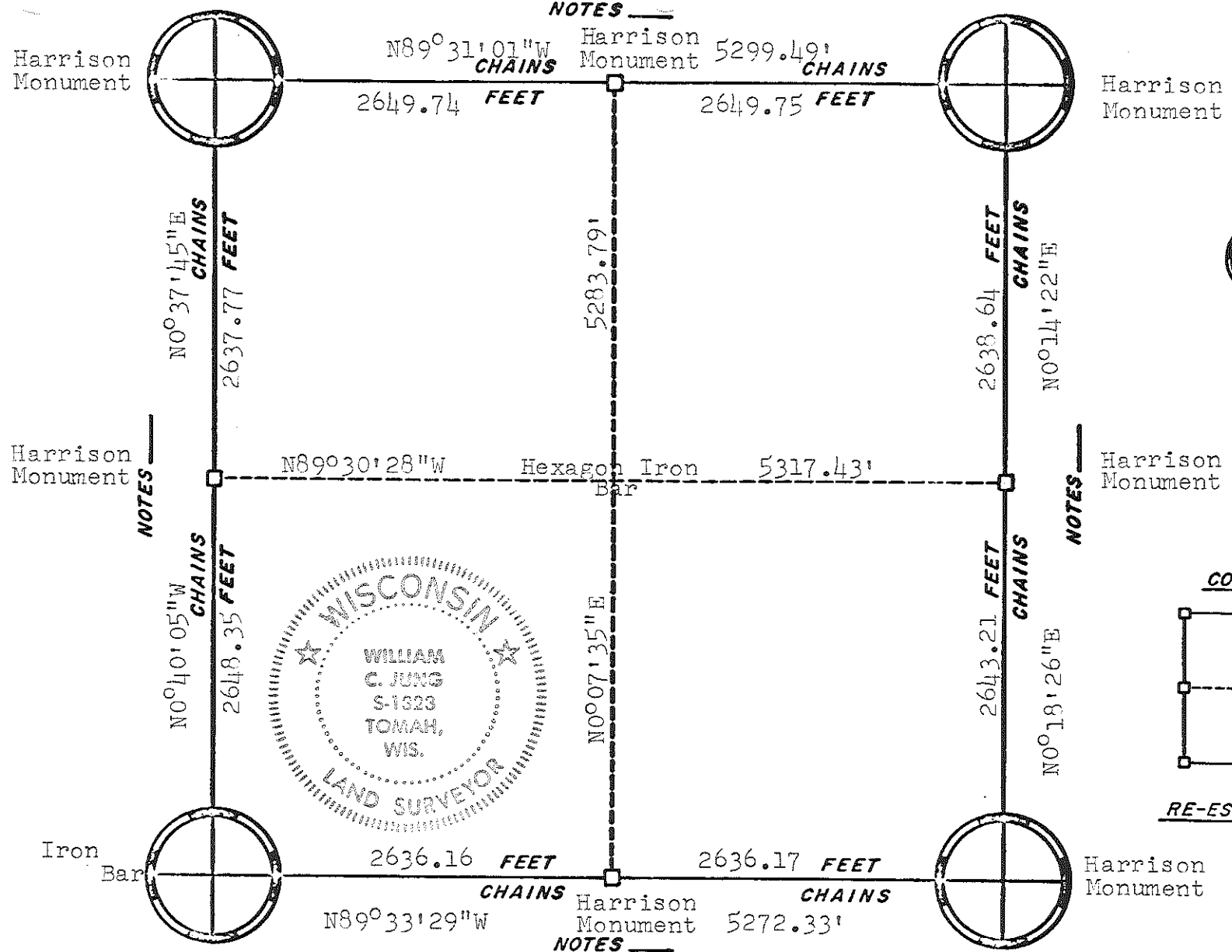
NOTES

ORIGINAL SURVEY DATA

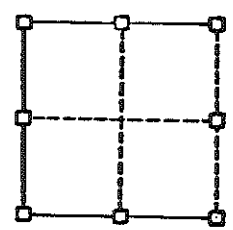
BY [Redacted] DATE 3/19/81

SURVEYED BY W. C. Jung	CONTRACT DATE November, 1979	COUNTY MONROE	TOWN-VILLAGE-CITY Little Falls	SECTION 29	TOWNSHIP T19N	RANGE R4W
---------------------------	---------------------------------	------------------	-----------------------------------	---------------	------------------	--------------

NOTES _____



CORNERS



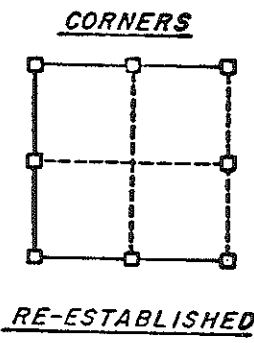
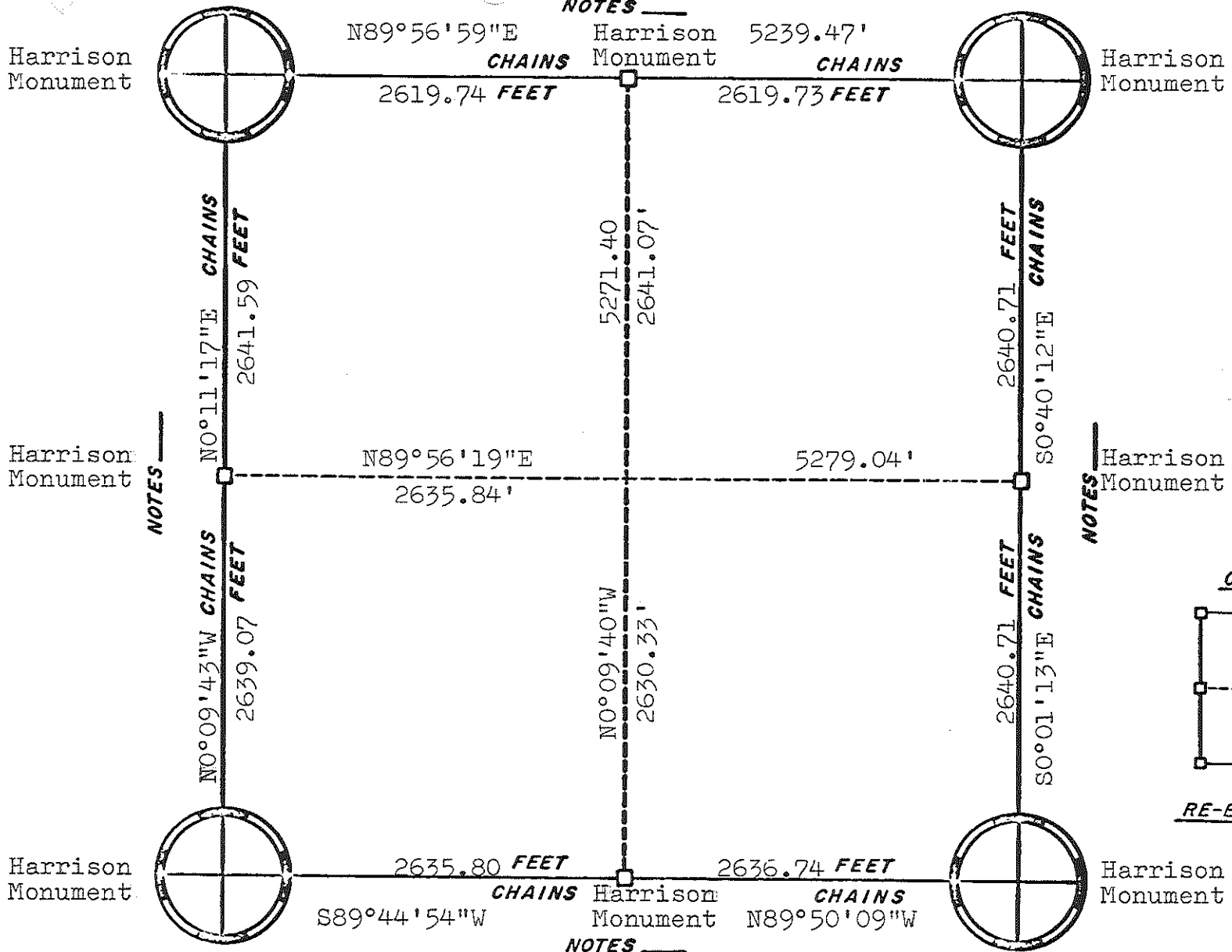
RE-ESTABLISHED

ORIGINAL SURVEY DATA

BY *wcj*

DATE 3/5/79

SURVEYED BY W. C. Jung	CONTRACT DATE April 1978	COUNTY MONROE	TOWN-VILLAGE-CITY Little Falls	SECTION 33	TOWNSHIP 19N	RANGE 4W
---------------------------	-----------------------------	---------------	-----------------------------------	---------------	-----------------	-------------



ORIGINAL SURVEY DATA

BY
DATE 3/19/81

SURVEYED BY H. A. Sime <u> </u>	CONTRACT DATE May 1980	COUNTY MONROE <u> </u>	TOWN- VILLAGE CITY Little Falls	SECTION 35	TOWNSHIP T19N	RANGE R4W
--	---------------------------	--	---	---------------	------------------	--------------