

# 2

**U.S. PUBLIC LAND CORNER  
MAINTENANCE**

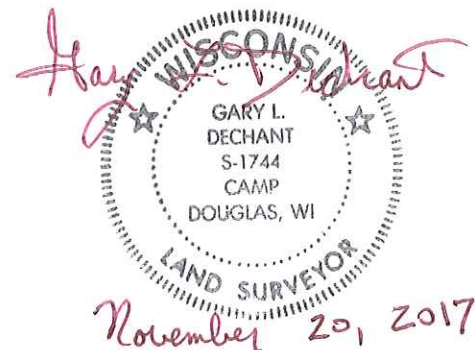
**Corner ID : N1/4 Sec. 1, T18N-R4W  
21904360020**

DATE	CREW	MONUMENT TYPE -----
October 26, 2017	Zachariah P.Dechant Gary L. Dechant	Existing Harrison Monument, top broke off in center line CTH "IP". On line with fence north & south

References:

	<u>Bearing</u>	<u>Distance</u>
1) Set 1/2"x24"round iron bar, down 4", 4' east of gate	N28E	50.00'
2) Set 1/2"x24" round iron bar, down 8", 14' south of center "IP"	S30E	16.20'
3) Set 1/2"x24" round iron bar, down 8", 13' south center CTH "IP"	S28W	15.98'
4) Set 1/2"x24" round iron bar, down 4", 11' east of 18" Red Pine	N30W	68.17'

**NOTE:** Harrison and reference markers set on straight lines.



I, William C. Jung, do hereby certify that on the 19<sup>th</sup> day of November 1979, I found (evidence) ~~(no evidence)~~ of the North 1/4 corner of Section 1, T 18 N, R 4 W, Fourth Principal Meridian, and I re-established said corner according to the Wisconsin Statutes as shown and described hereon.

Dated this 4<sup>th</sup> day of Feb. 1981.

William C. Jung

William C. Jung, R.L.S. 1323

Approved: <sup>Title</sup> **HARLEY A. SIME**  
**MONROE CO. SURVEYOR**

Description of corner and witness monuments, references and accessories used to perpetuate the original or re-established location of this corner:

History of original corner establishment:

Duane Marten set an iron bar at this corner in July of 1974.

Description of corner evidence found:

Found Marten's iron bar at the occupied corner, removed it and replaced it with a Harrison marker.

**See Reverse Side  
For Maintenance**

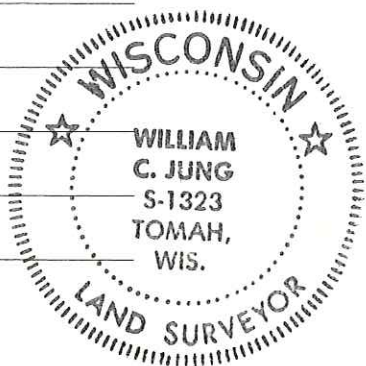
COUNTY SURVEYOR FORM NO. 1

Witnesses to corner location:

Jung

Pietz

Tormoen

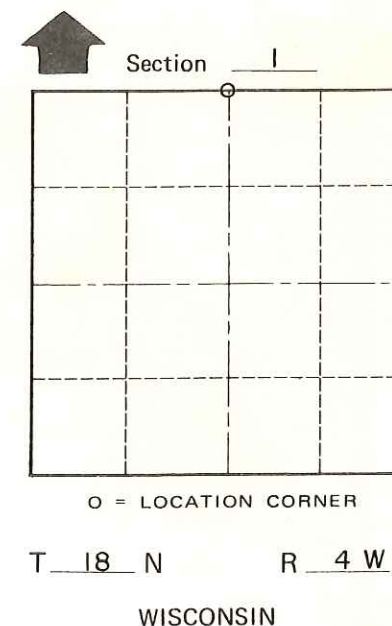
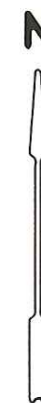
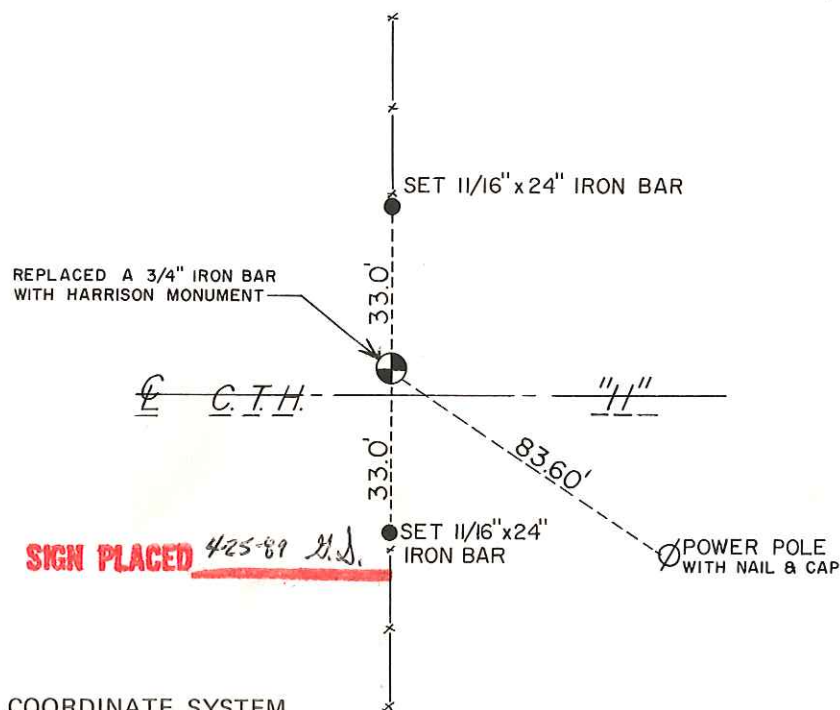


SURVEY CONTROL ORDER

Horizontal \_\_\_\_\_  
Vertical \_\_\_\_\_

WISCONSIN COORDINATE SYSTEM

Corner	East (X)	North (Y)	Elevation (Z)	Zone
Control Sta. Name				



\_\_\_\_\_ or Town Little Falls  
County of Monroe