

13

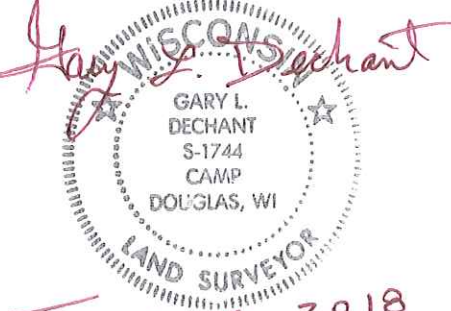
**U.S. PUBLIC LAND CORNER
MAINTENANCE**

**Corner ID : NW Sec. 6, T18N-R3W
21904360000**

<u>DATE</u>	<u>CREW</u>	<u>MONUMENT TYPE -----</u>
December 1, 2017	Zachariah P.Dechant Gary L. Dechant	Existing Harrison intact, 145' South of CTH "II" Set survey sign 1' west. In remnants of fence corner All previous ties gone.

References:

	<u>Bearing</u>	<u>Distance</u>
1) Set 3/4"x24" round iron bar, down 6"	N62E	22.48'
2) Set 3/4"x24" round iron bar, down 6", 8' south of 18" White Pine	S60E	27.73'
3) Set 3/4"x24" round iron bar, down 6", 5' NE of 14" White Pine	S32W	12.42'
4) Set 3/4"x24" round iron bar, down 6", 5' north of 10" White Pine	N72W	9.45'

Gary L. Dechant

January 5, 2018

I, William C. Jung, do hereby certify that on the 6th day of November 1978, I found (evidence) (~~no evidence~~) of the NW corner of Section 6, T 18 N, R 3 W, Fourth Principal Meridian, and I re-established said corner according to the Wisconsin Statutes as shown and described hereon.

Dated this 4th day of Jan. 1979.

William C. Jung, R.L.S. 1323

Crew Chief, County Surveyor's
Title Office

History of original corner establishment:

Schroeder was at this corner in June of 1895, as was Holden in Sept. of 1902.

Description of corner evidence found:

Accepted the occupied fence corner as the best available evidence.

**See Reverse Side
For Maintenance**

Description of corner and witness monuments, references and accessories used to perpetuate the original or re-established location of this corner:

Witnesses to corner location:

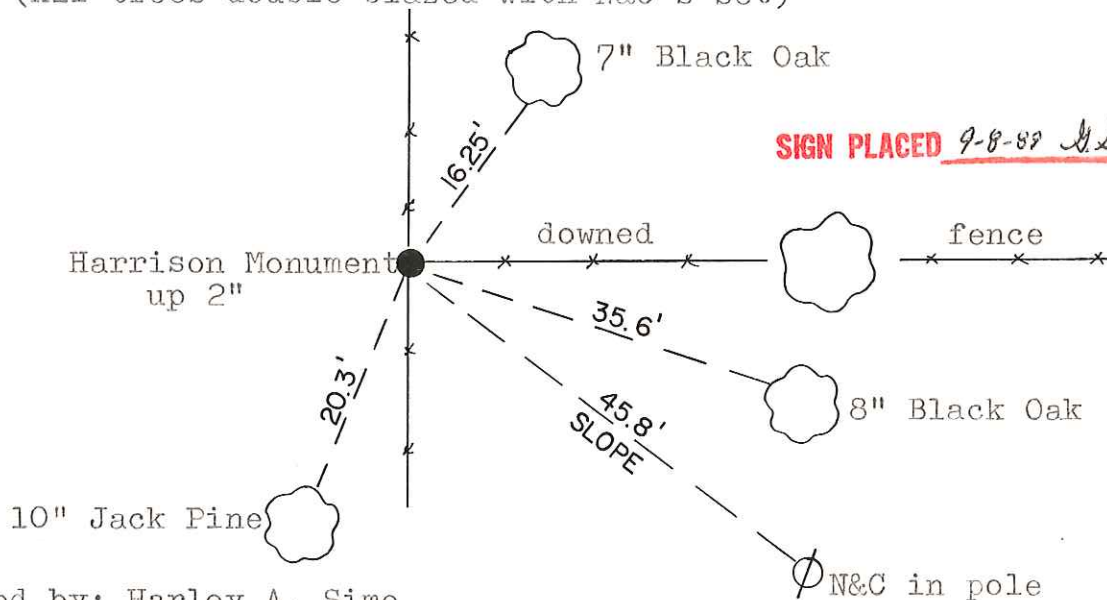
W. Jung

D. Wilhite

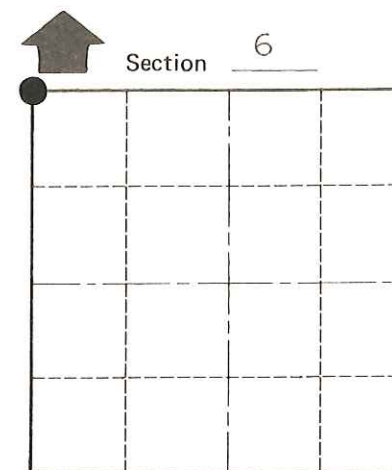
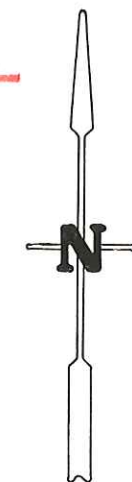
R. Lamb



(All trees double blazed with N&C's set)



SIGN PLACED 9-8-88 J.S.



● = LOCATION CORNER
T 18 N R 3 W
WISCONSIN

SURVEY CONTROL ORDER

Horizontal	_____
Vertical	_____

Approved by: Harley A. Sime
County Surveyor

WISCONSIN COORDINATE SYSTEM

Corner	East (X)	North (Y)	Elevation (Z)	Zone
Control Sta. Name				

City, Village or Town Lafayette

County of Monroe

COUNTY SURVEYOR FORM NO. 1