

CERTIFICATE

CERTIFIED LAND CORNER

No. 119

21904352000

I, Harley A. Sime, do hereby certify that on the 11th day of June 1980, I found ~~(evidence)~~ (no evidence) of the E/4 corner of Section 35, T 19 N, R 4 W Fourth Principal Meridian, and I re-established said corner according to the Wisconsin Statutes as shown and described hereon.

History of corner establishment since Original Government Survey

No known recorded history since the original government survey.

Description of corner evidence found:

Set in N-S fence line and equidistant between the NE corner and the SE corner of Section 35.

Dated this 16th day of Feb. 1981.

Harley A. Sime, R.L.S. 355

County Surveyor
Title

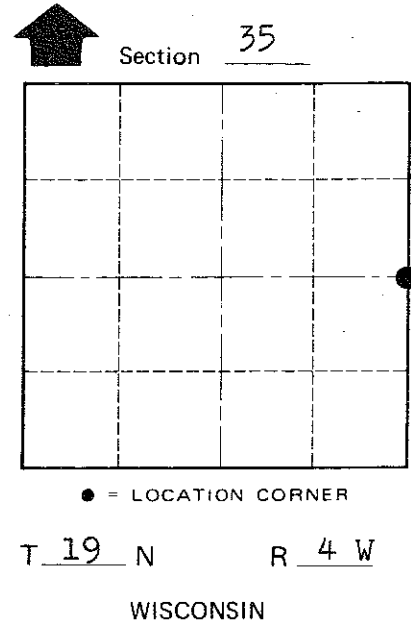
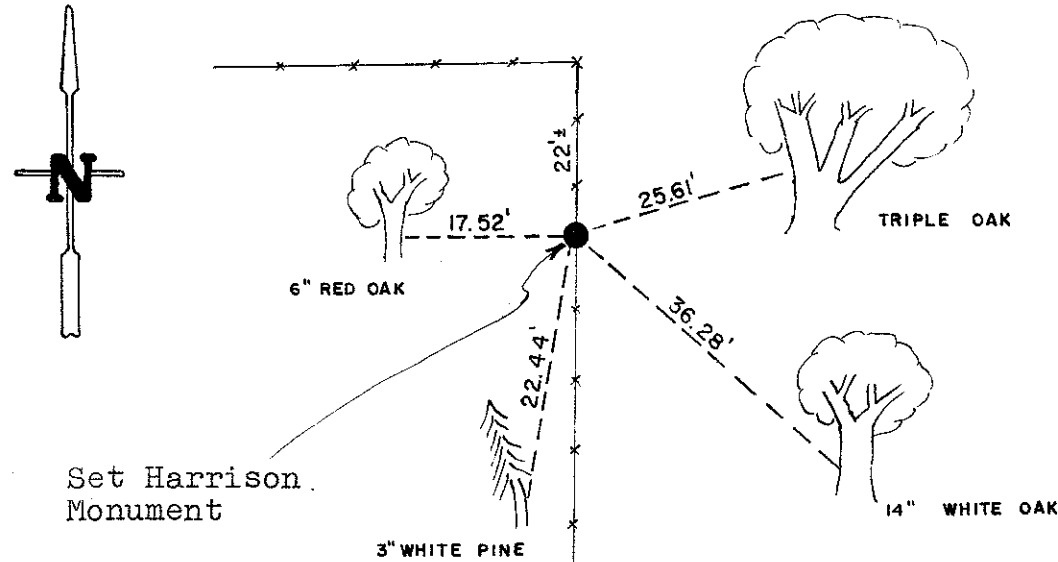
COUNTY SURVEYOR FORM NO. 1

Description of corner and witness monuments, references and accessories used to perpetuate the original or re-established location of this corner:

(All trees double blazed with N&C's set)

Witnesses to corner location:

G. Dechant
T. Tormoen
C. Dade



Approved: **HARLEY A. SIME**
MONROE CO. SURVEYOR

SURVEY CONTROL ORDER

Horizontal	_____
Vertical	_____

WISCONSIN COORDINATE SYSTEM

Corner	East (X)	North (Y)	Elevation (Z)	Zone
Control Sta. Name				

~~City, Village or~~ Town Little Falls
County of Monroe