

123/3

**U.S. PUBLIC LAND CORNER
MAINTENANCE**

**Corner ID : SE Sec. 35, T19N-R4W
21904350000**

<u>DATE</u>	<u>CREW</u>	<u>MONUMENT TYPE</u> -----
November 4, 2015	Zachariah P.Dechant Gary L. Dechant	Existing Harrison intact, down 4" at intersection of Dellview Road & CTH "II"

References:

	<u>Bearing</u>	<u>Distance</u>
1) Set 3/4"x24" iron bar, down 12" in field	N40E	54.98'
2) Set 3/4"x24" iron bar, down 12" in field, 5' east of power pole	S37E	71.13'
3) Set 3/4"x24" iron bar, down 6" in lawn, between power pole & anchor	S40W	52.42'
4) Set 3/4"x24" iron bar, down 12" in field	N37W	59.81'

Harrison & reference markers set on straight lines



I, William C. Jung, do hereby certify that on the 19th day of November 1979, I found (evidence) ~~(no evidence)~~ of the Northwest corner of Section 1, T 18 N, R 4 W, Fourth Principal Meridian, and I re-established said corner according to the Wisconsin Statutes as shown and described hereon.

Dated this 4th day of Feb. 1981.

William C. Jung

William C. Jung, R.L.S. 1323

Approved: **HARLEY A. SIME**
MONROE CO. SURVEYOR

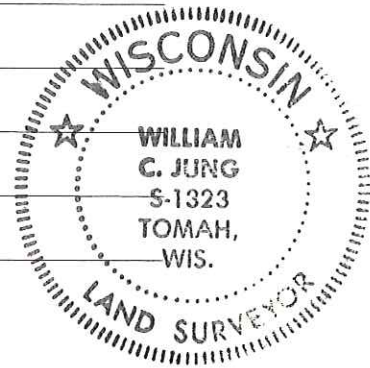
Description of corner and witness monuments, references and accessories used to perpetuate the original or re-established location of this corner:

Witnesses to corner location:

Jung

Pietz

Tormoen



SURVEY CONTROL ORDER

Horizontal	_____
Vertical	_____

WISCONSIN COORDINATE SYSTEM

Corner	East (X)	North (Y)	Elevation (Z)	Zone
Control Sta. Name				

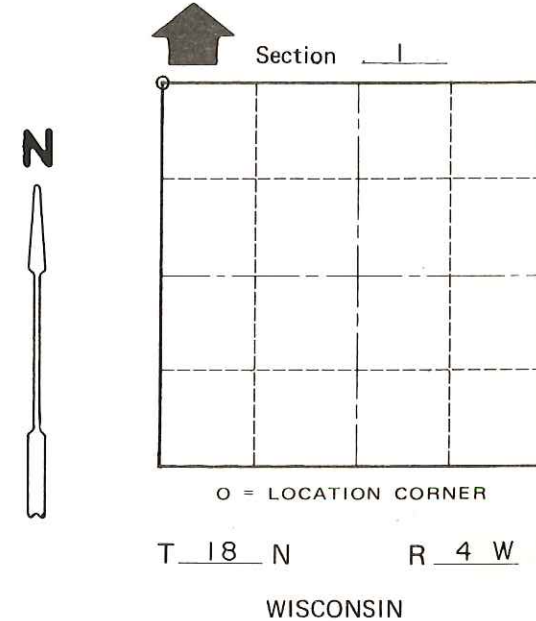
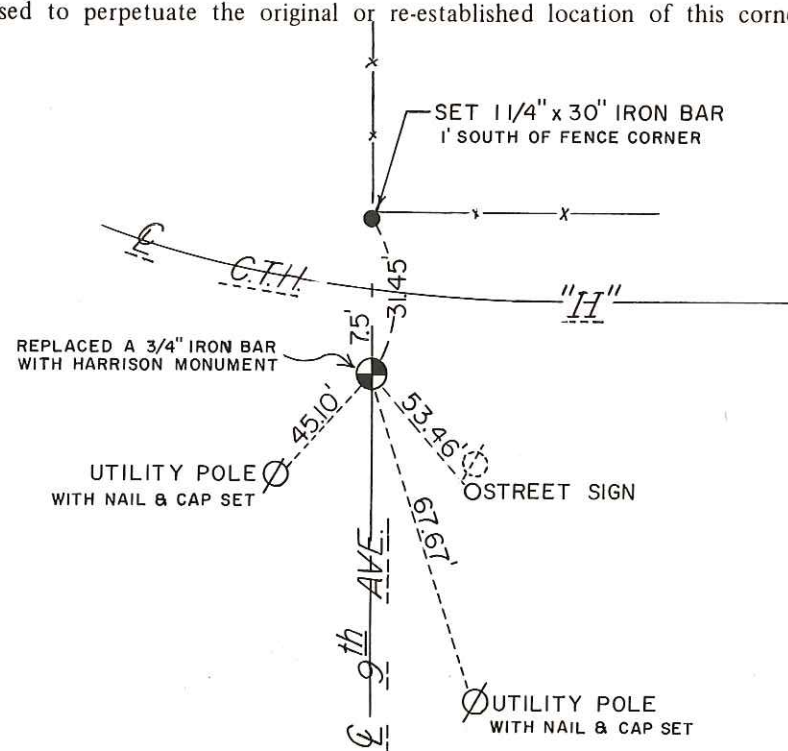
History of original corner establishment:

Hamilton La Rue used this corner in April of 1897. Duane Marten set an iron bar at this corner in July of 1974. Larry Feddersen used this bar in his survey of July, 1976.

Description of corner evidence found:

Found the corner of record, removed the iron bar and replaced it with a Harrison marker.

See Reverse Side For Maintenance



_____ or Town Little Falls
 County of Monroe

COUNTY SURVEYOR FORM NO. 1