

21904340020

I, Garold A. Sime, do hereby certify that on the 5th day of May 1990, I found ~~(no evidence)~~ (no evidence) of the S1 corner of Section 34, T 19 N, R 4 W Fourth Principal Meridian, and I re-established said corner according to the Wisconsin Statutes as shown and described hereon.

Dated this 19th day of October 1990.

Garold A. Sime
Monroe County Surveyor
Title

History of corner establishment since Original Government Survey
No history recorded since the Original Government Survey

Description of corner evidence found:

Set this corner on line and equidistant between Section corners

COUNTY SURVEYOR FORM NO. 1

Description of corner and witness monuments, references and accessories used to perpetuate the original or re-established location of this corner:

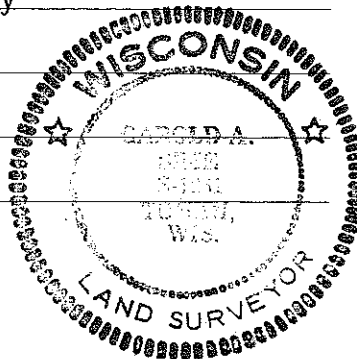
Set cast iron Harrison Monument at corner

Witnesses to corner location:

Garold A. Sime, R.L.S.

John F. Kenworthy

Brian Forsythe



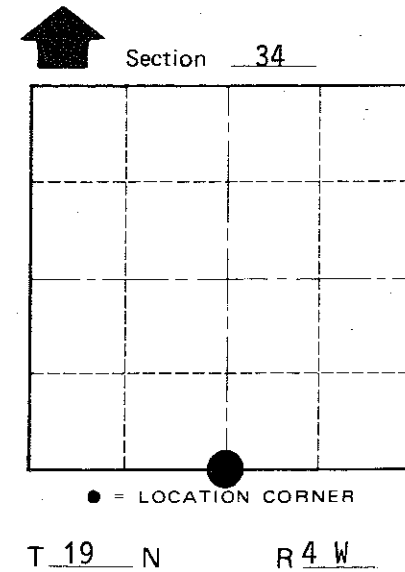
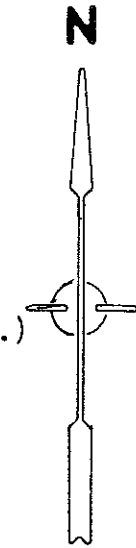
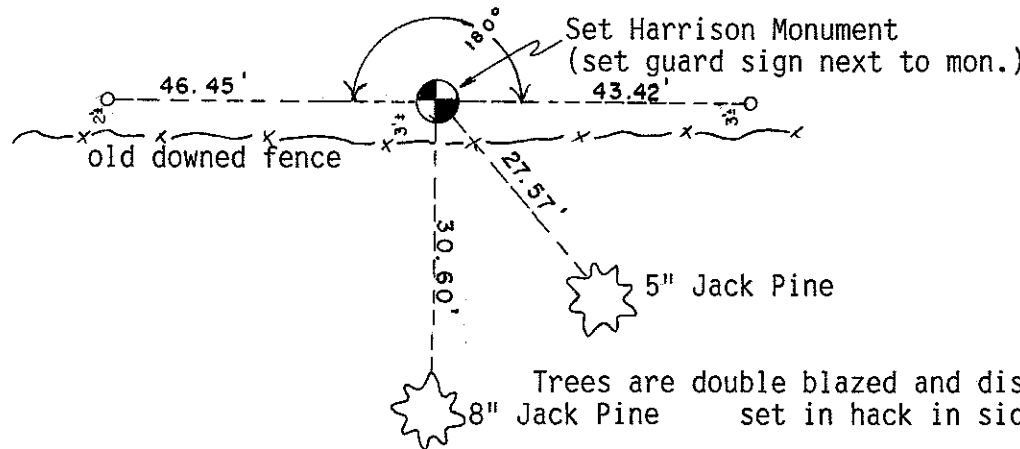
SURVEY CONTROL ORDER

Horizontal _____
Vertical _____

WISCONSIN COORDINATE SYSTEM

Corner	East (X)	North (Y)	Elevation (Z)	Zone
Control Sta. Name				

o = Set 3/4"x 24" iron bar



WISCONSIN

Trees are double blazed and distances are to nail
8" Jack Pine set in hack in side of tree

~~xxxxxxx~~ or Town of Little Falls

County of Monroe