

CERTIFICATE

CERTIFIED LAND CORNER

No. 129

21904320000

I, William C. Jung, do hereby certify that on the First day of November 1979, I found (evidence) (~~no evidence~~) of the Southeast corner of Section 32, T19 N, R 4 W, Fourth Principal Meridian, and I re-established said corner according to the Wisconsin Statutes as shown and described hereon.

Dated this 3rd day of Feb. 1981.

William C. Jung

William C. Jung, R.L.S. 1323
Title

History of original corner establishment:

Holden was at this corner in April of 1906. Duane Marten set an iron bar at this corner in September of 1973. Garold Sime used this bar in his survey of March, 1978. I also used this bar in a survey in April of 1978.

Description of corner evidence found:

Found the corner of record, removed the iron bar at the old occupied corner, and replaced it with a Harrison marker.

Approved: **HARLEY A. SIME**
MONROE CO. SURVEYOR

Description of corner and witness monuments, references and accessories used to perpetuate the original or re-established location of this corner:

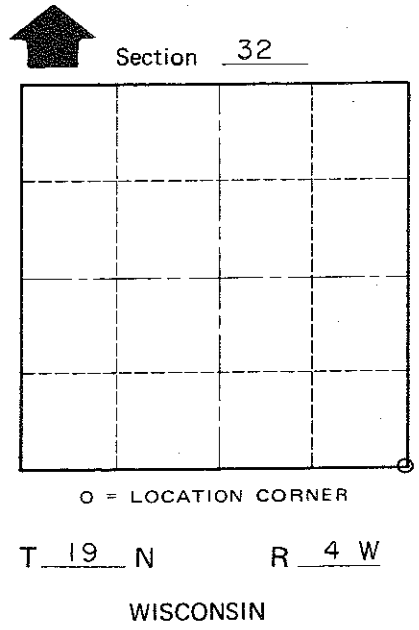
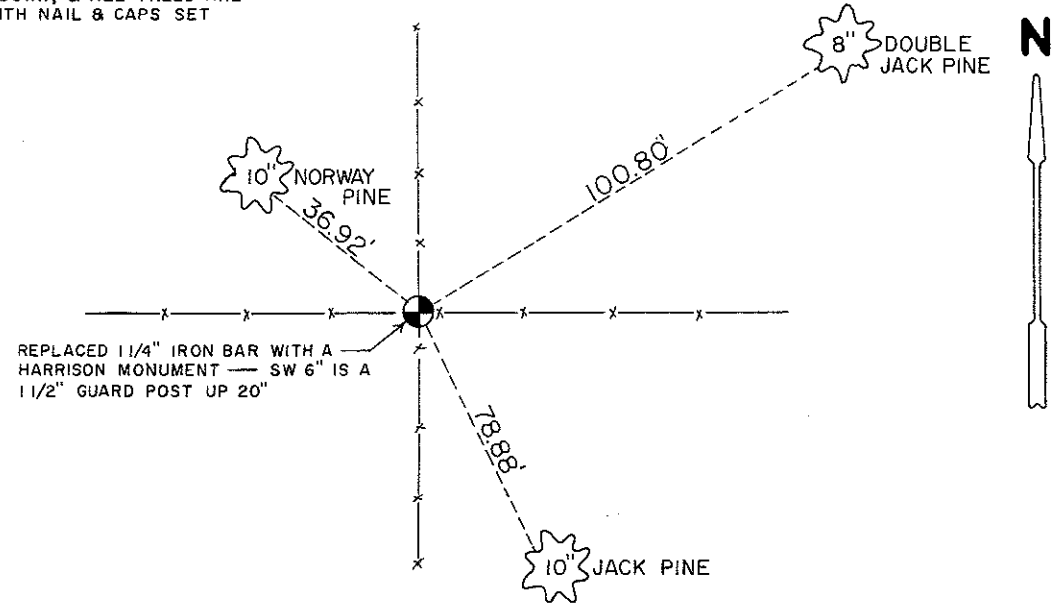
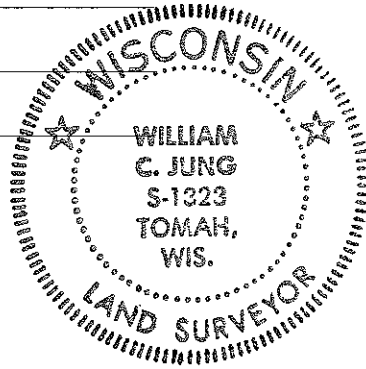
COUNTY SURVEYOR FORM NO. 1

Witnesses to corner location:

Jung

Pietz

NOTE: ALL FENCES ARE DOWN, & ALL TREES ARE DOUBLE BLAZED WITH NAIL & CAPS SET



SURVEY CONTROL ORDER

Horizontal	_____
Vertical	_____

WISCONSIN COORDINATE SYSTEM

Corner	East (X)	North (Y)	Elevation (Z)	Zone
Control Sta. Name				

or Town Little Falls

County of Monroe