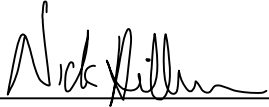


# CERTIFICATE

I, Nicholas M. Hillmer, do hereby certify that this document and the data contained herein was prepared by me or under my direct supervision and that I am a duly Licensed Land Surveyor under the laws of the State of Wisconsin.

Dated this 23rd day of May, 2013



Nicholas M. Hillmer, P.L.S. 2909  
Anderson Engineering of Minnesota, LLC.

# CERTIFIED LAND CORNER

## History of corner established since Original Government Survey

Fred A. Holden was at this corner in November of 1906. In 1978 William Jung found a 3/4 inch iron bar used in previous surveys. Jung replaced the iron bar with a Harrison monument.

No. 21902280000

## Description of evidence found

On January 24th, 2013, Anderson Engineering of Minnesota located the Harrison monument 0.3 feet above grade and 0.5 feet south of a witness post with a survey marker sign.

Description of corner and witness monuments, references and accessories used to perpetuate the original or re-established location of this corner:

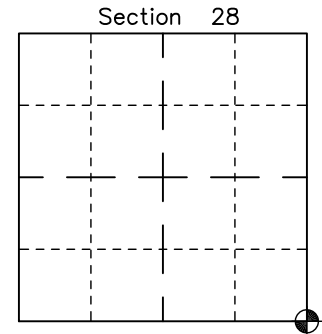
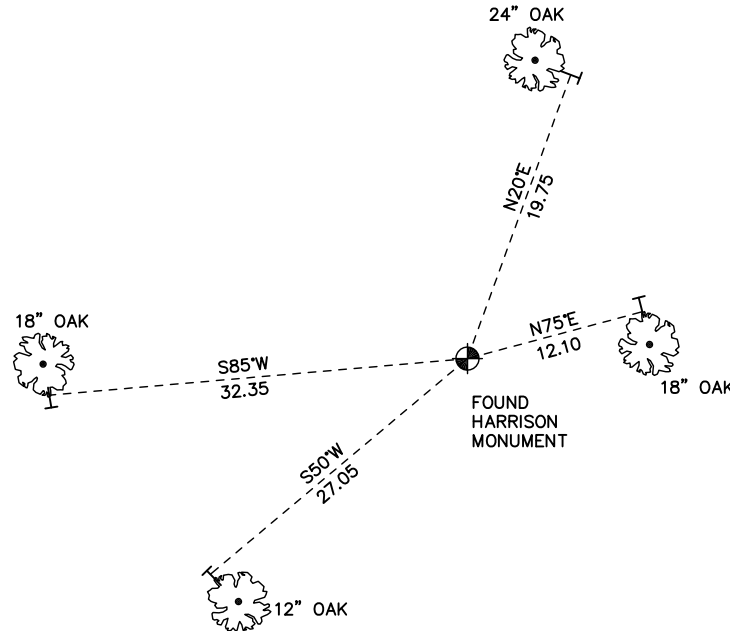
Witnesses to corner location:

Nick Hillmer  
Josh Oslund  
Dan Greenwald

MONROE COUNTY  
COORDINATE SYSTEM  
NAD 1983 (2007)

HARRISON MONUMENT  
Northing (Y) 431697.80  
Easting (X) 678437.08

Base Station - 22 182W  
Northing (Y) 408053.25  
Easting (X) 679287.00



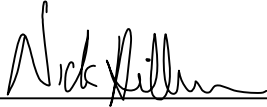
● = LOCATION CORNER  
Corner I.D. SE 28  
T 19 N R 2 W  
Town of Grant  
Monroe County, WI.

All distances are shown in U.S. Survey Feet.  
Ties are to 60D nails set in trees.  
Bearings are for tie reference purposes only.  
Coordinates were derived from RTK GNSS procedures.

# CERTIFICATE

I, Nicholas M. Hillmer, do hereby certify that this document and the data contained herein was prepared by me or under my direct supervision and that I am a duly Licensed Land Surveyor under the laws of the State of Wisconsin.

Dated this 23rd day of May, 2013



Nicholas M. Hillmer, P.L.S. 2909  
Anderson Engineering of Minnesota, LLC.

# CERTIFIED LAND CORNER

## History of corner established since Original Government Survey

Fred A. Holden was here in August of 1911. In 1985 Gary L. Dechant found an unrecorded iron pipe in the centerline of the road. Dechant accepted it as the corner as it fit other field evidence very well. Dechant replaced the iron with a Harrison monument.

## Description of evidence found

On February 20th, 2013, Anderson Engineering of Minnesota located the Harrison monument 6 inches below the road surface in the centerline of 16th Drive.

No. 21902290000

Description of corner and witness monuments, references and accessories used to perpetuate the original or re-established location of this corner:

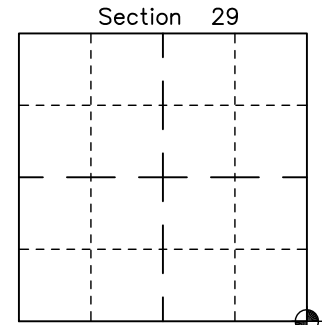
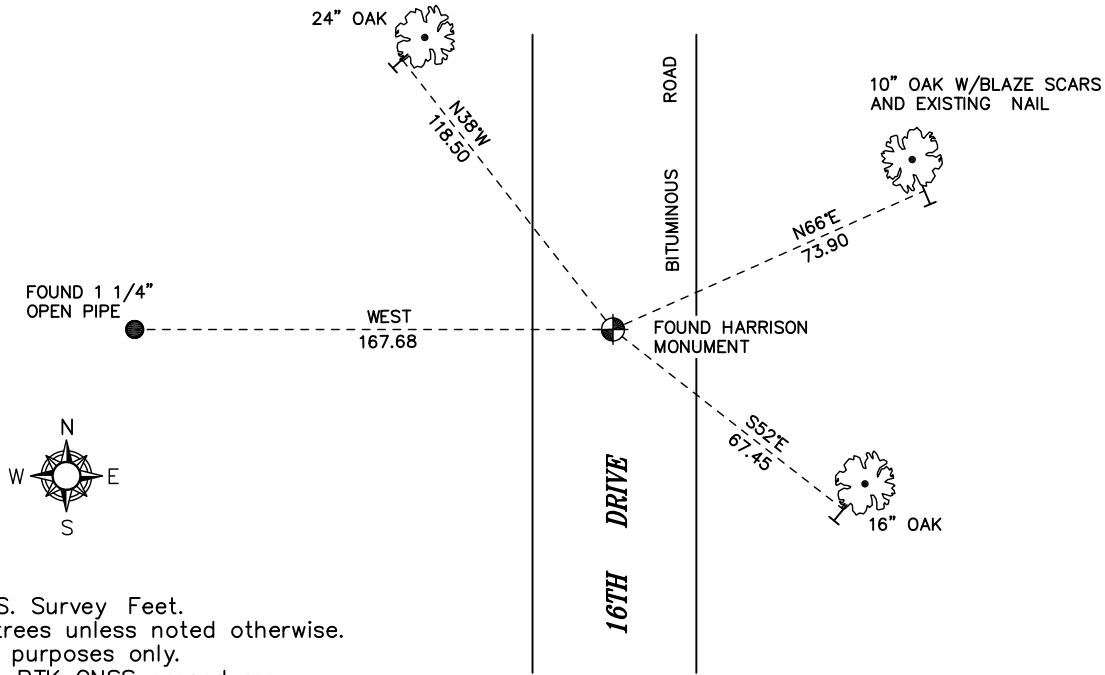
Witnesses to corner location:

Nick Hillmer  
Dan Greenwald

MONROE COUNTY  
COORDINATE SYSTEM  
NAD 1983 (2007)

HARRISON MONUMENT  
Northing (Y) 431530.79  
Easting (X) 673136.64

Base Station - 22 182W  
Northing (Y) 408053.25  
Easting (X) 679287.00



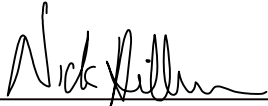
● = LOCATION CORNER  
Corner I.D. SE 29  
T 19 N R 2 W  
Town of Grant  
Monroe County, WI.

All distances are shown in U.S. Survey Feet.  
Ties are to 60D nails set in trees unless noted otherwise.  
Bearings are for tie reference purposes only.  
Coordinates were derived from RTK GNSS procedures.

**CERTIFICATE**

I, Nicholas M. Hillmer, do hereby certify that this document and the data contained herein was prepared by me or under my direct supervision and that I am a duly Licensed Land Surveyor under the laws of the State of Wisconsin.

Dated this 23rd day of May, 2013



Nicholas M. Hillmer, P.L.S. 2909  
Anderson Engineering of Minnesota, LLC.

**CERTIFIED LAND CORNER**

**History of corner established since Original Government Survey**

Fred A. Holden set an iron pipe at the corner from the original bearing trees. In 1985 Gary L. Dechant found a 3/4 inch by 34 inch iron bar inside of Holden's pipe. Dechant replaced the pipe with a Harrison monument.

**Description of evidence found**

On February 25th, 2013, Anderson Engineering of Minnesota located the Harrison monument 9 inches below the road surface and 2.5 feet west of the centerline of the road.

No. 21902322000

Description of corner and witness monuments, references and accessories used to perpetuate the original or re-established location of this corner:

Witnesses to corner location:

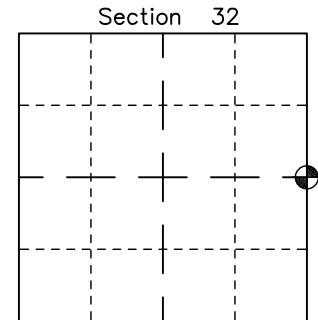
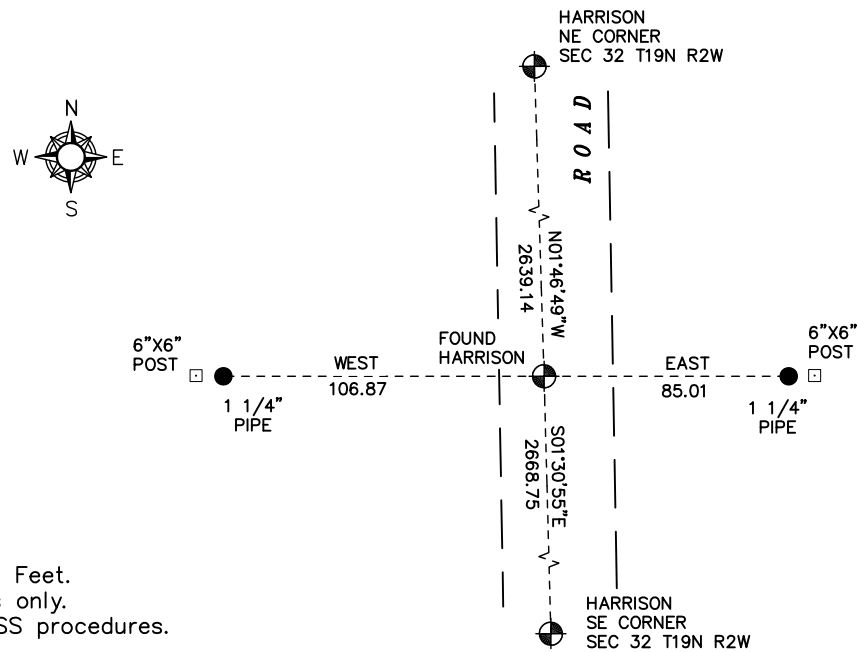
Nick Hillmer  
Josh Oslund  
Dan Greenwald

MONROE COUNTY  
COORDINATE SYSTEM  
NAD 1983 (2007)

HARRISON MONUMENT  
Northing (Y) 428892.92  
Easting (X) 673218.63

Base Station - 22 182W  
Northing (Y) 408053.25  
Easting (X) 679287.00

All distances are shown in U.S. Survey Feet.  
Bearings are for tie reference purposes only.  
Coordinates were derived from RTK GNSS procedures.

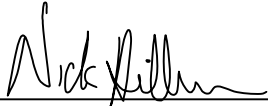


⊙ = LOCATION CORNER  
Corner I.D. E 1/4 32  
T 19 N R 2 W  
Town of Grant  
Monroe County, WI.

# CERTIFICATE

I, Nicholas M. Hillmer, do hereby certify that this document and the data contained herein was prepared by me or under my direct supervision and that I am a duly Licensed Land Surveyor under the laws of the State of Wisconsin.

Dated this 21st day of May, 2013



Nicholas M. Hillmer, P.L.S. 2909  
Anderson Engineering of Minnesota, LLC.

# CERTIFIED LAND CORNER

## History of corner established since Original Government Survey

Fred A. Holden was here in August of 1911 and states in his notes that there is an old stake in a stone pile. In 1985 Gary L. Dechant found an unrecorded well point in a pile of stones. Dechant accepted it as the corner as it fits Holden's distance to the quarter corner to the north very well. History of the well point is unknown, but the stone pile seems to be the same one referred to in Holden's survey of 1911. Dechant set a Harrison monument in place of the unrecorded well point.

## Description of evidence found

On February 25th, 2013, Anderson Engineering of Minnesota located the Harrison monument 0.3 foot above grade and 1.4 feet west of a wood post.

No. 21902320000

Description of corner and witness monuments, references and accessories used to perpetuate the original or re-established location of this corner:

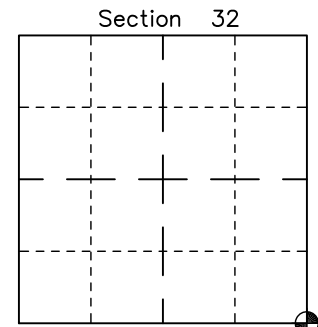
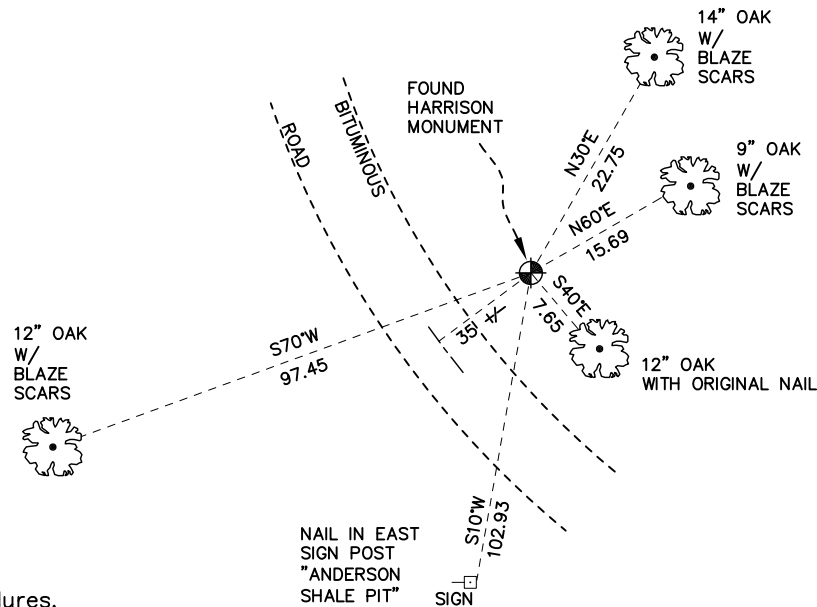
Witnesses to corner location:

Nick Hillmer  
Josh Oslund  
Dan Greenwald

MONROE COUNTY  
COORDINATE SYSTEM  
NAD 1983 (2007)

HARRISON MONUMENT  
Northing (Y) 426225.11  
Easting (X) 673289.20

Base Station - 22 182W  
Northing (Y) 408053.25  
Easting (X) 679287.00



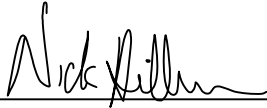
⊙ = LOCATION CORNER  
Corner I.D. SE 32  
T 19 N R 2 W  
Town of Grant  
Monroe County, WI.

All distances are shown in U.S. Survey Feet.  
Ties are to 60D nails set in trees.  
Bearings are for tie reference purposes only.  
Coordinates were derived from RTK GNSS procedures.

**CERTIFICATE**

I, Nicholas M. Hillmer, do hereby certify that this document and the data contained herein was prepared by me or under my direct supervision and that I am a duly Licensed Land Surveyor under the laws of the State of Wisconsin.

Dated this 23rd day of May, 2013



Nicholas M. Hillmer, P.L.S. 2909  
Anderson Engineering of Minnesota, LLC.

**CERTIFIED LAND CORNER**

No. 21902330000

**History of corner established since Original Government Survey**

In 1976 Harley A. Sime searched for the corner and found nothing. Mr. Sime set a Harrison monument at the corner by doubling over two McCoy boundary markers found to the north, the E 1/4 corner and the NE corner of the SE 1/4-SE 1/4 of Section 33. This distance proportioned well with the government distance of the existing 40 corner to the south.

**Description of evidence found**

On March 12th, 2013, Anderson Engineering of Minnesota located the Harrison monument 0.5 feet west of a witness post with survey marker sign.

Description of corner and witness monuments, references and accessories used to perpetuate the original or re-established location of this corner:

Witnesses to corner location:

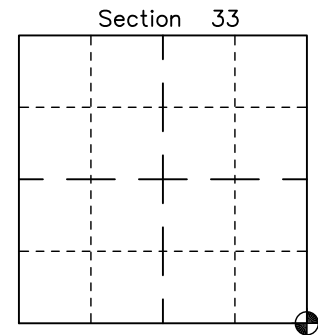
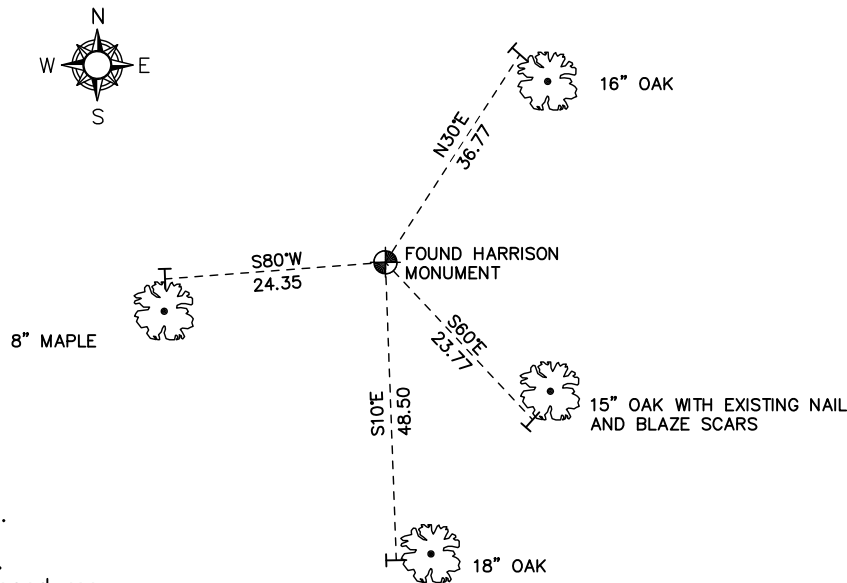
Nick Hillmer  
Josh Oslund  
Dan Greenwald

MONROE COUNTY  
COORDINATE SYSTEM  
NAD 1983 (2007)

HARRISON MONUMENT  
Northing (Y) 426327.56  
Easting (X) 678494.82

Base Station - 22 182W  
Northing (Y) 408053.25  
Easting (X) 679287.00

All distances are shown in U.S. Survey Feet.  
Ties are to 60D nails set in trees.  
Bearings are for tie reference purposes only.  
Coordinates were derived from RTK GNSS procedures.

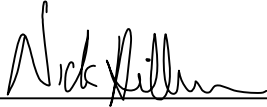


● = LOCATION CORNER  
Corner I.D. SE 33  
T 19 N R 2 W  
Town of Grant  
Monroe County, WI.

# CERTIFICATE

I, Nicholas M. Hillmer, do hereby certify that this document and the data contained herein was prepared by me or under my direct supervision and that I am a duly Licensed Land Surveyor under the laws of the State of Wisconsin.

Dated this 23rd day of May, 2013



Nicholas M. Hillmer, P.L.S. 2909  
Anderson Engineering of Minnesota, LLC.

# CERTIFIED LAND CORNER

No. 21902330020

## History of corner established since Original Government Survey

In 1976 Harley A. Sime searched for the corner and found nothing. Mr. Sime set a Harrison monument at a proportionate location using two boundary markers found to the north and south.

## Description of evidence found

On February 20th, 2013, Anderson Engineering of Minnesota located the Harrison monument 0.4 feet east of a yellow channel iron post.

Description of corner and witness monuments, references and accessories used to perpetuate the original or re-established location of this corner:

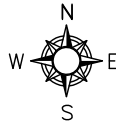
Witnesses to corner location:

Nick Hillmer  
Josh Oslund  
Dan Greenwald

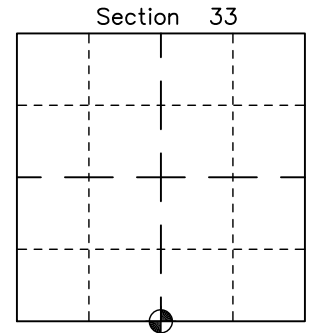
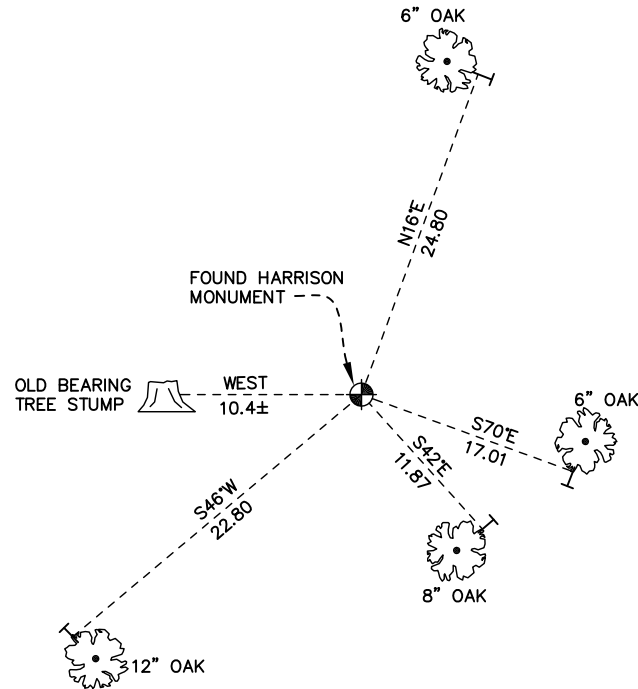
MONROE COUNTY  
COORDINATE SYSTEM  
NAD 1983 (2007)

HARRISON MONUMENT  
Northing (Y) 426296.10  
Easting (X) 675896.28

Base Station - 22 182W  
Northing (Y) 408053.25  
Easting (X) 679287.00



All distances are shown in U.S. Survey Feet.  
Ties are to 60D nails set in trees.  
Bearings are for tie reference purposes only.  
Coordinates were derived from RTK GNSS procedures.

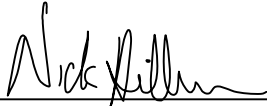


● = LOCATION CORNER  
Corner I.D. S 1/4 33  
T 19 N R 2 W  
Town of Grant  
Monroe County, WI.

# CERTIFICATE

I, Nicholas M. Hillmer, do hereby certify that this document and the data contained herein was prepared by me or under my direct supervision and that I am a duly Licensed Land Surveyor under the laws of the State of Wisconsin.

Dated this 23rd day of May, 2013



Nicholas M. Hillmer, P.L.S. 2909  
Anderson Engineering of Minnesota, LLC.

# CERTIFIED LAND CORNER

## History of corner established since Original Government Survey

Fred A. Holden re-established this corner in August of 1911 and set a stone. The McCoy boundary notes from WWII indicate that a monument was probably set at this corner. Denzine used the McCoy monument as the corner in March of 1976. William Jung used the McCoy monument as a tie in November 1976. Parish used the McCoy monument as the corner in September of 1981. William Jung found Holden's stone 1.8 feet north of the McCoy marker. In February of 1983 Jung recorded a corner certificate for the corner and stated that the stone is the actual corner and the McCoy marker is now a witness point.

## Description of evidence found

On January 24th, 2013, Anderson Engineering of Minnesota located the stone with an "X" 0.3 feet below grade and 0.1 feet west of a witness post with survey marker sign. Also located was the McCoy monument, a 4 inch U.S. ARMY CORPS OF ENGINEERS survey control mark disk set in concrete. The stone with an "X" is perpetuated as the corner.

No. 21902332000

Description of corner and witness monuments, references and accessories used to perpetuate the original or re-established location of this corner:

Witnesses to corner location:

Nick Hillmer  
Josh Oslund  
Dan Greenwald

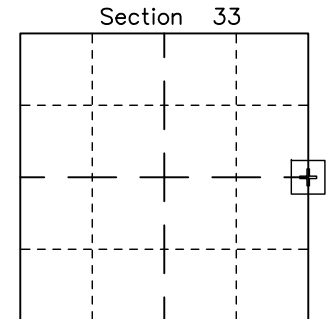
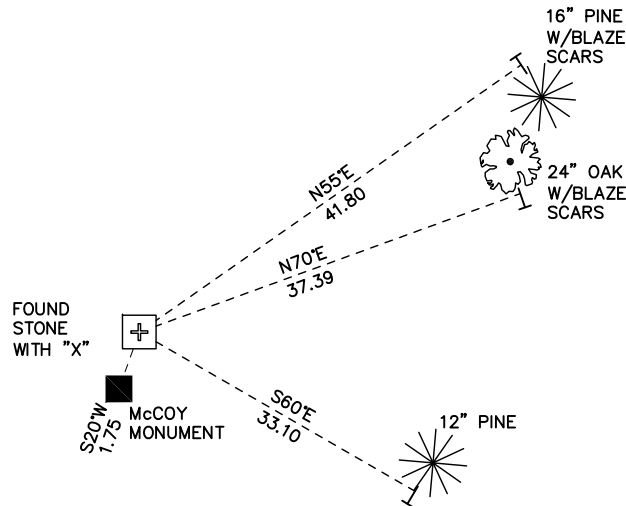
MONROE COUNTY  
COORDINATE SYSTEM  
NAD 1983 (2007)

STONE

Northing (Y) 428978.58  
Easting (X) 678439.10

Base Station - 22 182W

Northing (Y) 408053.25  
Easting (X) 679287.00



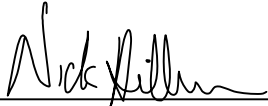
⊕ = LOCATION CORNER  
Corner I.D. E 1/4 33  
T 19 N R 2 W  
Town of Grant  
Monroe County, WI.

All distances are shown in U.S. Survey Feet.  
Ties are to 60D nails set in trees.  
Bearings are for tie reference purposes only.  
Coordinates were derived from RTK GNSS procedures.

# CERTIFICATE

I, Nicholas M. Hillmer, do hereby certify that this document and the data contained herein was prepared by me or under my direct supervision and that I am a duly Licensed Land Surveyor under the laws of the State of Wisconsin.

Dated this 23rd day of May, 2013



Nicholas M. Hillmer, P.L.S. 2909  
Anderson Engineering of Minnesota, LLC.

# CERTIFIED LAND CORNER

## History of corner established since Original Government Survey

Fred A. Holden was here in 1911 and set a buggy axle. In September of 1981 Parish found Holden's buggy axle and set a Harrison monument by it. William Jung found Holden's buggy axle. The Harrison monument on the west side of the axle is a witness corner.

## Description of evidence found

On March 13th, 2013, Anderson Engineering of Minnesota located the buggy axle and Harrison monument. The axle is the corner and the Harrison monument is a witness corner. An old downed fence line runs east, west, and north from the corner.

No. 21902340020

Description of corner and witness monuments, references and accessories used to perpetuate the original or re-established location of this corner:

Witnesses to corner location:

Nick Hillmer  
Josh Oslund  
Dan Greenwald

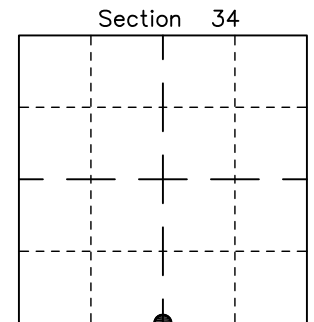
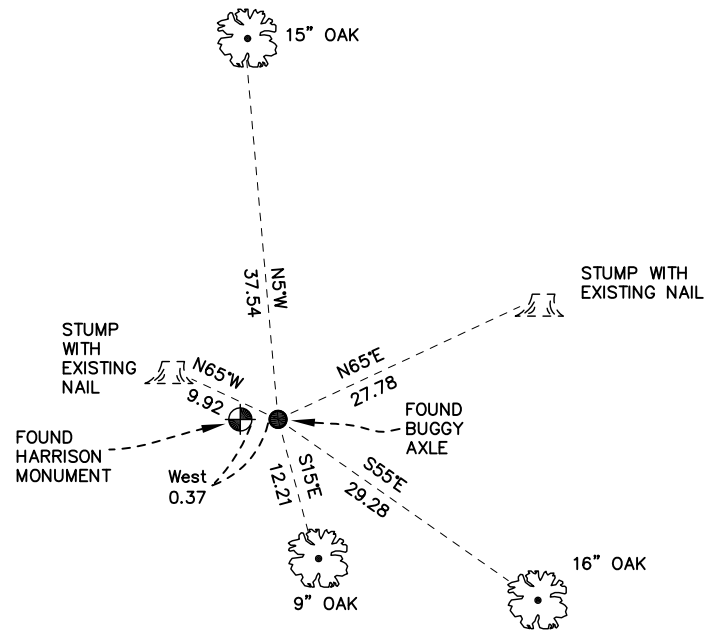
MONROE COUNTY  
COORDINATE SYSTEM  
NAD 1983 (2007)

BUGGY AXLE

Northing (Y) 426334.11  
Easting (X) 681131.59

Base Station - 22 182W

Northing (Y) 408053.25  
Easting (X) 679287.00



● = LOCATION CORNER  
 Corner I.D. S 1/4 34  
T 19 N R 2 W  
 Town of Grant  
 Monroe County, WI.

All distances are shown in U.S. Survey Feet.  
 Ties are to 60D nails set in trees.  
 Bearings are for tie reference purposes only.  
 Coordinates were derived from RTK GNSS procedures.