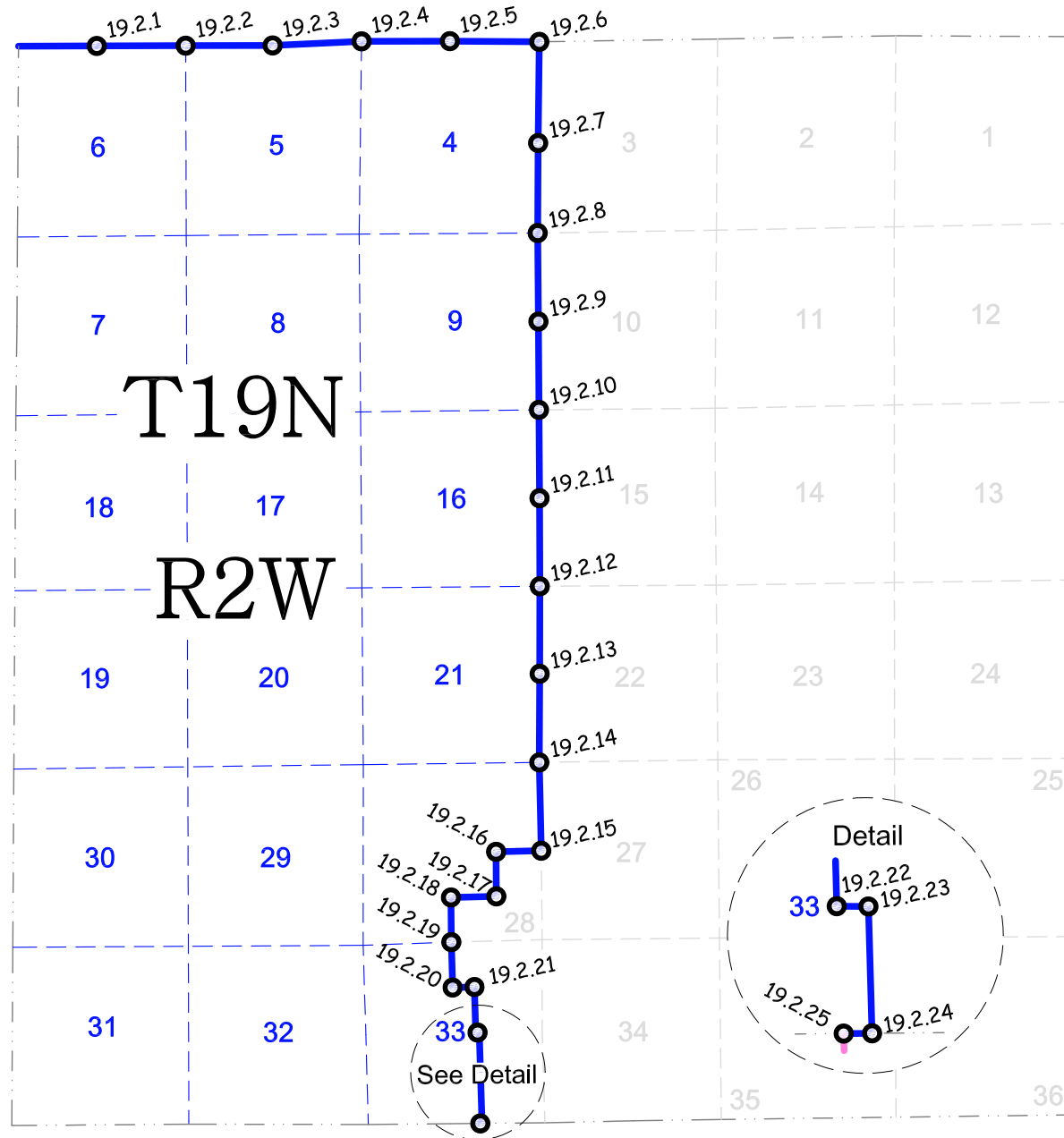


2013 Fort McCoy boundary monuments of Township 19 North, Range 2 West Grant



LEGEND

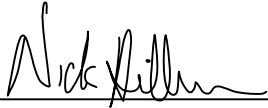
- Boundary monument
- 19.2.X "X" Denotes preceding page number



CERTIFICATE

I, Nicholas M. Hillmer, do hereby certify that this document and the data contained herein was prepared by me or under my direct supervision and that I am a duly Licensed Land Surveyor under the laws of the State of Wisconsin.

Dated this 21st day of May, 2013



Nicholas M. Hillmer, P.L.S. 2909
Anderson Engineering of Minnesota, LLC.

CERTIFIED LAND CORNER

History of corner established since Original Government Survey

In 1936 David Blencoe re-established this corner and set an iron pipe. The 1940's McCoy boundary notes show a corner at this location. In December of 1982, William Jung found and accepted Blencoe's pipe at the corner. Jung also found a McCoy monument 4 inches south of the pipe as a witness corner.

Description of evidence found

On November 28th, 2012, Anderson Engineering of Minnesota located Blencoe's 2 1/2 inch pipe with a 3 inch cap 2.1 feet above grade, and the McCoy monument, a 4 inch U.S. Army Corps of Engineers survey control mark disk set in concrete 0.37 feet south of the pipe. Both monuments are in a mound. Pits were found on the east and west side of the mound.

No. 22002310020

Description of corner and witness monuments, references and accessories used to perpetuate the original or re-established location of this corner:

Witnesses to corner location:

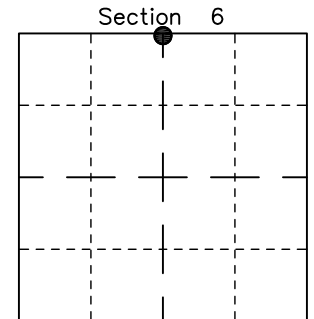
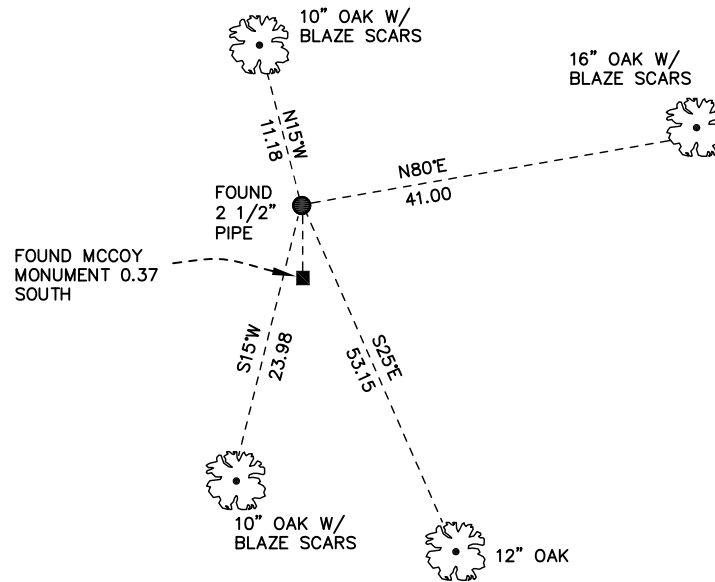
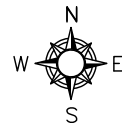
Dan Greenwald
Josh Oslund

MONROE COUNTY
COORDINATE SYSTEM
NAD 1983 (2007)

2 1/2 INCH PIPE
Northing (Y) 458166.41
Easting (X) 665251.46

Base Station - 22 182W
Northing (Y) 408053.25
Easting (X) 679287.00

All distances are shown in U.S. Survey Feet.
Ties are to 60D nails set in trees.
Bearings are for tie reference purposes only.
Coordinates were derived from RTK GNSS procedures.

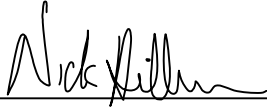


● = LOCATION CORNER
Corner I.D. N 1/4 6
T 19 N R 2 W
Town of Grant
Monroe County, WI.

CERTIFICATE

I, Nicholas M. Hillmer, do hereby certify that this document and the data contained herein was prepared by me or under my direct supervision and that I am a duly Licensed Land Surveyor under the laws of the State of Wisconsin.

Dated this 21st day of May, 2013



Nicholas M. Hillmer, P.L.S. 2909
Anderson Engineering of Minnesota, LLC.

CERTIFIED LAND CORNER

History of corner established since Original Government Survey In October of 1901 Fred Holden's notes show a stone at this corner with a "X" and "S" on top. In 1936 David Blencoe found and accepted Holden's corner. Blencoe set an iron pipe. The 1940's McCoy boundary notes show a corner at this location. In December of 1982 William Jung found a capped pipe, a stone, and a brass capped pipe. Jung accepted the 2 1/2 inch capped pipe as the corner and the other two monuments as witness corners.

Description of evidence found

On November 29th, 2012, Anderson Engineering of Minnesota located Blencoe's 2 1/2 inch capped pipe, a stone with a cross, and a 2 inch pipe with a U.S. Army Corps of Engineers survey control mark disk. Blencoe's capped pipe is 1.5 feet above grade and has Section numbers 31, 32, 5, 6 stamped in the top of the cap. All monuments are in a mound with pits to the north, south, east, and west. Blencoe's 2 1/2 inch capped pipe is 0.4 feet west of the stone and 0.95 feet west of the USACE disk. The USACE disk is 2 feet above grade and is stamped McCoy Boundary. Also located during the search was a 2 1/2 inch pipe with a 3 inch cap that reads Wis Conservation Dept. Section Corner T20N-R2W 31, 32, 5, 6. This pipe is 51.43 feet northeast of the Blencoe's capped pipe. Blencoe's 2 1/2 inch capped pipe is accepted as the corner.

No. 22002310000

Description of corner and witness monuments, references and accessories used to perpetuate the original or re-established location of this corner:

Witnesses to corner location:

Dan Greenwald
Josh Oslund

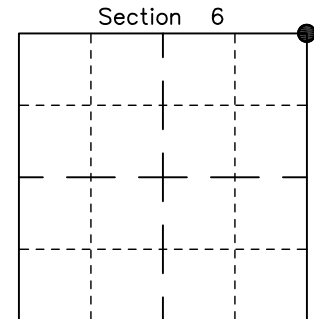
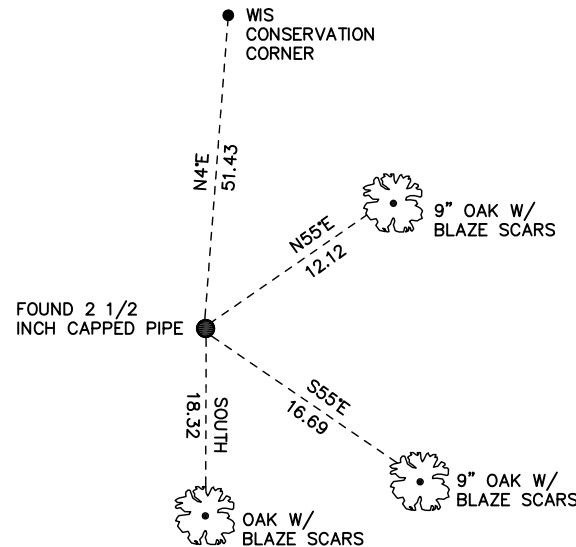
MONROE COUNTY
COORDINATE SYSTEM
NAD 1983 (2007)

2 1/2 INCH CAPPED PIPE
Northing (Y) 458174.40
Easting (X) 667883.96

Base Station - 22 182W
Northing (Y) 408053.25
Easting (X) 679287.00



All distances are shown in U.S. Survey Feet.
Ties are to 60D nails set in trees.
Bearings are for tie reference purposes only.
Coordinates were derived from RTK GNSS procedures.

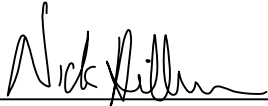


● = LOCATION CORNER
Corner I.D. NE 6
T 19 N R 2 W
Town of Grant
Monroe County, WI.

CERTIFICATE

I, Nicholas M. Hillmer, do hereby certify that this document and the data contained herein was prepared by me or under my direct supervision and that I am a duly Licensed Land Surveyor under the laws of the State of Wisconsin.

Dated this 21st day of May, 2013



Nicholas M. Hillmer, P.L.S. 2909
Anderson Engineering of Minnesota, LLC.

CERTIFIED LAND CORNER

History of corner established since Original Government Survey

In October of 1901, Fred Holden shows a stake at this corner. In 1936 David Blencoe found and accepted Keach's stone as the corner and set an iron pipe. Blencoe's states his corner is 12 feet west and 74.8 feet south of Holden's. The 1940's McCoy boundary notes show a corner at this location. In December of 1982 William Jung found and accepted Blencoe's pipe as the corner.

Description of evidence found

On November 27th, 2012, Anderson Engineering of Minnesota located Blencoe's 2 1/2 inch pipe with a 3 inch cap in a mound on the north side of a fire trail that runs east-west. Also located during the search was a McCoy monument, a 4 inch U.S. Army Corps of engineers survey control mark disk set in concrete 61.48 feet northeast of the Blencoe's pipe. Previous records indicate a discrepancy and confusion over the boundary. Blencoe's pipe is accepted as the corner. The McCoy monument is a witness marker.

No. 22002320020

Description of corner and witness monuments, references and accessories used to perpetuate the original or re-established location of this corner:

Witnesses to corner location:

Josh Oslund
Dan Greenwald

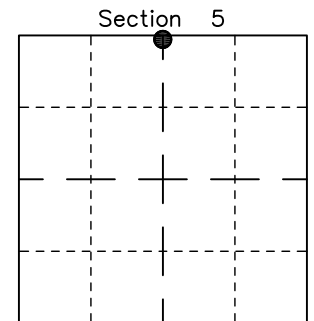
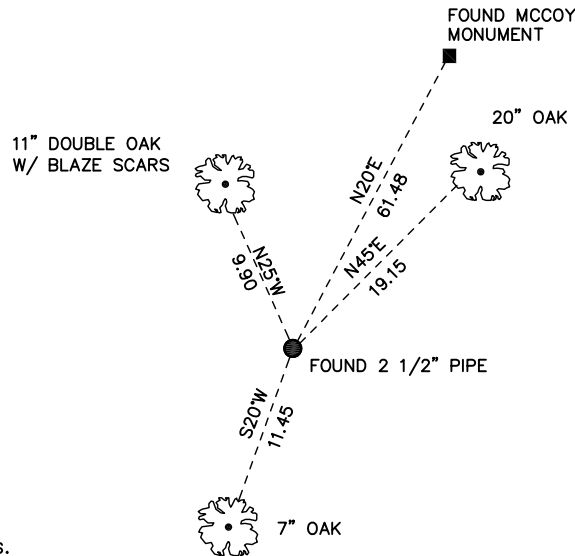
MONROE COUNTY
COORDINATE SYSTEM
NAD 1983 (2007)

2 1/2 INCH PIPE
Northing (Y) 458181.10
Easting (X) 670457.08

Base Station - 22 182W
Northing (Y) 408053.25
Easting (X) 679287.00



All distances are shown in U.S. Survey Feet.
Ties are to 60D nails set in trees.
Bearings are for tie reference purposes only.
Coordinates were derived from RTK GNSS procedures.

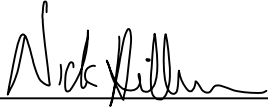


● = LOCATION CORNER
Corner I.D. N 1/4 5
T 19 N R 2 W
Town of Grant
Monroe County, WI.

CERTIFICATE

I, Nicholas M. Hillmer, do hereby certify that this document and the data contained herein was prepared by me or under my direct supervision and that I am a duly Licensed Land Surveyor under the laws of the State of Wisconsin.

Dated this 21st day of May, 2013



Nicholas M. Hillmer, P.L.S. 2909
Anderson Engineering of Minnesota, LLC.

CERTIFIED LAND CORNER

History of corner established since Original Government Survey

In October of 1901, Fred Holden's notes show a "X S" on a natural stone ledge. In 1936 David Blencoe found and accepted Holden's corner. Blencoe set a pipe at the location. The 1940's McCoy boundary notes show a corner at this location. In December of 1982 William Jung found and accepted Blencoe's pipe at the corner.

No. 22002320000

Description of evidence found

On November 27th, 2012, Anderson Engineering of Minnesota located Blencoe's 2 1/2 inch pipe with a 3 inch cap 4.2 feet above grade. The pipe reads "Camp McCoy Boundary" on the east side. The monument is on the west side of a ridge in a mound. A pit was found 5 feet south of the 2 1/2 inch pipe.

Description of corner and witness monuments, references and accessories used to perpetuate the original or re-established location of this corner:

Witnesses to corner location:

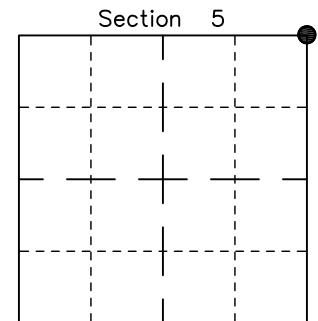
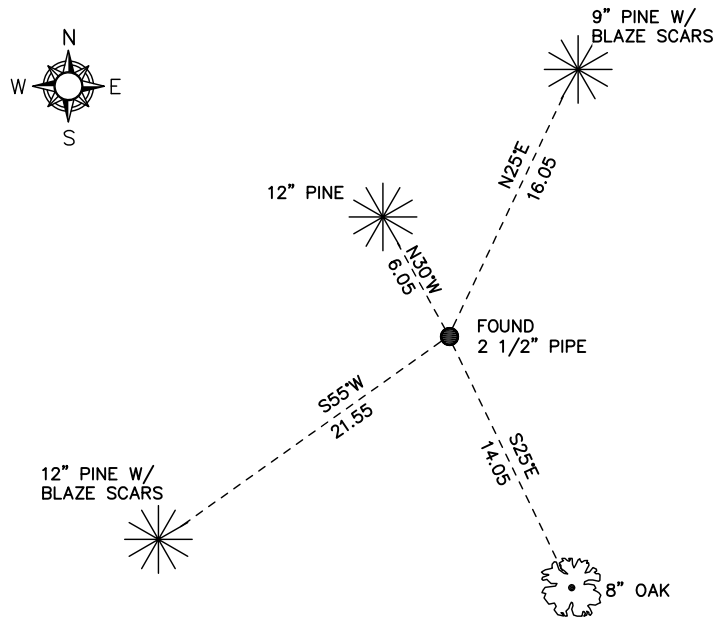
Josh Oslund
Dan Greenwald

MONROE COUNTY
COORDINATE SYSTEM
NAD 1983 (2007)

2 1/2 INCH PIPE
Northing (Y) 458303.67
Easting (X) 673090.71

Base Station - 22 182W
Northing (Y) 408053.25
Easting (X) 679287.00

All distances are shown in U.S. Survey Feet.
Ties are to 60D nails set in trees.
Bearings are for tie reference purposes only.
Coordinates were derived from RTK GNSS procedures.

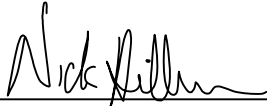


● = LOCATION CORNER
Corner I.D. NE 5
T 19 N R 2 W
Town of Grant
Monroe County, WI.

CERTIFICATE

I, Nicholas M. Hillmer, do hereby certify that this document and the data contained herein was prepared by me or under my direct supervision and that I am a duly Licensed Land Surveyor under the laws of the State of Wisconsin.

Dated this 21st day of May, 2013



Nicholas M. Hillmer, P.L.S. 2909
Anderson Engineering of Minnesota, LLC.

CERTIFIED LAND CORNER

History of corner established since Original Government Survey

In October of 1901, Fred Holden's notes show an iron bar at this corner. In 1936 David Blencoe found and accepted Holden's corner. Blencoe set an iron pipe. The 1940's McCoy boundary notes show a corner at this location. In September of 1982 William Jung found and accepted Blencoe's pipe as the corner. Jung also found the McCoy monument to the south as a witness corner.

Description of evidence found

On November 27th, 2012, Anderson Engineering of Minnesota located David Blencoe's 2 1/2 inch pipe with stamped cap 1.4 feet above grade, and the McCoy monument, a 4 inch U.S. Army Corps of Engineers survey control mark disk set in concrete 0.62 feet south of the 2 1/2 inch pipe. The monuments were found in a 3x3x1 foot mound with pits to the east and west.

No. 22002330020

Description of corner and witness monuments, references and accessories used to perpetuate the original or re-established location of this corner:

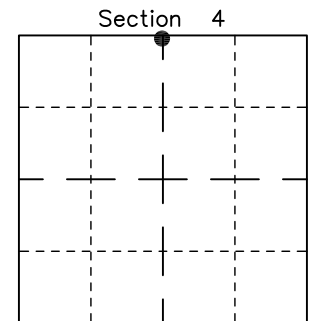
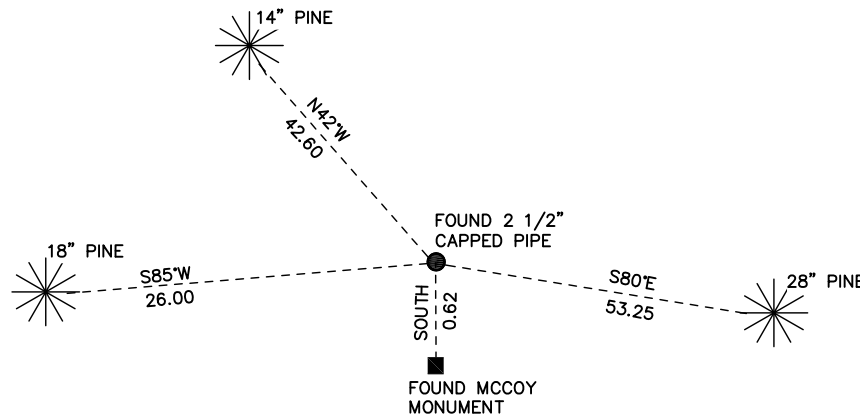
Witnesses to corner location:

Josh Oslund
Dan Greenwald

MONROE COUNTY
COORDINATE SYSTEM
NAD 1983 (2007)

2 1/2 INCH CAPPED PIPE
Northing (Y) 458309.12
Easting (X) 675705.73

Base Station - 22 182W
Northing (Y) 408053.25
Easting (X) 679287.00



● = LOCATION CORNER

Corner I.D. N 1/4 4

T 19 N R 2 W

Town of Grant

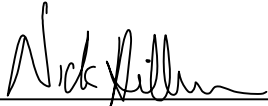
Monroe County, WI.

All distances are shown in U.S. Survey Feet.
Ties are to 60D nails set in trees.
Bearings are for tie reference purposes only.
Coordinates were derived from RTK GNSS procedures.

CERTIFICATE

I, Nicholas M. Hillmer, do hereby certify that this document and the data contained herein was prepared by me or under my direct supervision and that I am a duly Licensed Land Surveyor under the laws of the State of Wisconsin.

Dated this 21st day of May, 2013



Nicholas M. Hillmer, P.L.S. 2909
Anderson Engineering of Minnesota, LLC.

CERTIFIED LAND CORNER

No. 22002330000

History of corner established since Original Government Survey

Fred Holden was at this corner is October of 1901. In 1936 David Blencoe found a buggy axle at the corner and set an iron pipe over the buggy axle. The 1940's McCoy boundary notes show a corner at this location. In September of 1982 William Jung found a capped pipe and accepted it as the corner. Jung also found a McCoy monument as a witness marker.

Description of evidence found

On November 27th, 2012, Anderson Engineering of Minnesota located Blencoe's 2 1/2 inch pipe with stamped cap 2.0 feet above grade and 0.5 feet southwest of a witness post with survey marker sign. Also found was the McCoy monument, a 4 inch U.S. Army Corps of Engineers survey control mark disk set in concrete is 0.48 feet southwest of the pipe.

Description of corner and witness monuments, references and accessories used to perpetuate the original or re-established location of this corner:

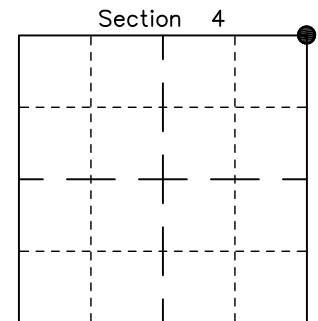
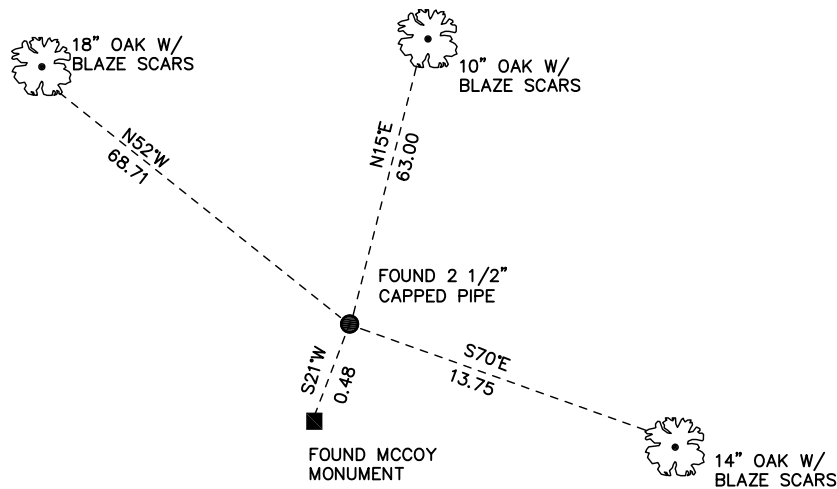
Witnesses to corner location:

Josh Oslund
Dan Greenwald

MONROE COUNTY
COORDINATE SYSTEM
NAD 1983 (2007)

2 1/2 INCH CAPPED PIPE
Northing (Y) 458288.90
Easting (X) 678353.17

Base Station - 22 182W
Northing (Y) 408053.25
Easting (X) 679287.00



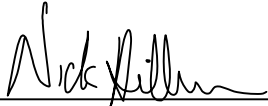
● = LOCATION CORNER
Corner I.D. NE 4
T 19 N R 2 W
Town of Grant
Monroe County, WI.

All distances are shown in U.S. Survey Feet.
Ties are to 60D nails set in trees.
Bearings are for tie reference purposes only.
Coordinates were derived from RTK GNSS procedures.

CERTIFICATE

I, Nicholas M. Hillmer, do hereby certify that this document and the data contained herein was prepared by me or under my direct supervision and that I am a duly Licensed Land Surveyor under the laws of the State of Wisconsin.

Dated this 21st day of May, 2013



Nicholas M. Hillmer, P.L.S. 2909
Anderson Engineering of Minnesota, LLC.

CERTIFIED LAND CORNER

History of corner established since Original Government Survey

Fred Holden was at this corner in October of 1901. The 1940's McCoy boundary notes show a corner at this location. In March of 1980 Feddersen shows a sleigh bar at this corner. In September of 1980 Hiedecke's map shows a sleigh bar. In September of 1982 William Jung found the sleigh bar and replaced it with a Harrison monument. Jung also found a McCoy marker as a witness marker.

Description of evidence found

On November 27th, 2012, Anderson Engineering of Minnesota located the Harrison monument flush with the ground and 0.89 feet south of the McCoy monument, a 4 inch U.S. Army Corps of Engineers survey control mark disk set in concrete. A witness post with a survey marker sign was found 0.65 feet east of the Harrison monument.

No. 21902042000

Description of corner and witness monuments, references and accessories used to perpetuate the original or re-established location of this corner:

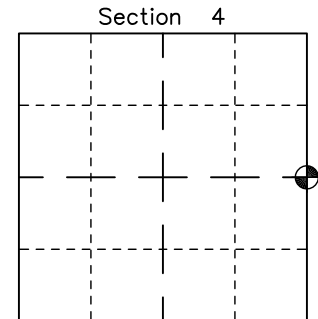
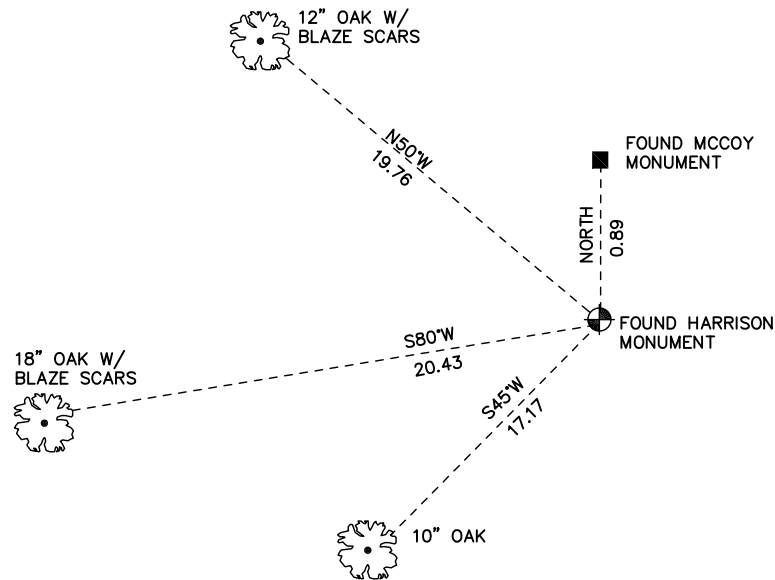
Witnesses to corner location:

Dan Greenwald
Josh Oslund

MONROE COUNTY
COORDINATE SYSTEM
NAD 1983 (2007)

HARRISON MONUMENT
Northing (Y) 455291.29
Easting (X) 678319.35

Base Station - 22 182W
Northing (Y) 408053.25
Easting (X) 679287.00



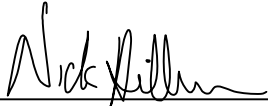
⊙ = LOCATION CORNER
Corner I.D. E 1/4 4
T 19 N R 2 W
Town of Grant
Monroe County, WI.

All distances are shown in U.S. Survey Feet.
Ties are to 60D nails set in trees.
Bearings are for tie reference purposes only.
Coordinates were derived from RTK GNSS procedures.

CERTIFICATE

I, Nicholas M. Hillmer, do hereby certify that this document and the data contained herein was prepared by me or under my direct supervision and that I am a duly Licensed Land Surveyor under the laws of the State of Wisconsin.

Dated this 21st day of May, 2013



Nicholas M. Hillmer, P.L.S. 2909
Anderson Engineering of Minnesota, LLC.

CERTIFIED LAND CORNER

History of corner established since Original Government Survey

Fred Holden's notes of October 1901 and May 1908 show an iron bar at this corner. The 1940's McCoy boundary notes show a corner at this location. Larry Feddersen found and used an iron at this corner in 1980. In September of 1982 William Jung found a sleigh bar at the corner. Jung removed the bar and replaced it with a Harrison monument. Jung also found a McCoy monument 1 foot to the north as a witness marker.

Description of evidence found

On November 27th, 2012, Anderson Engineering of Minnesota located the Harrison monument flush with the ground and 1.0 foot south of the McCoy monument, a 4 inch U.S. Army Corps of Engineers survey control mark disk set in concrete.

No. 21902040000

Description of corner and witness monuments, references and accessories used to perpetuate the original or re-established location of this corner:

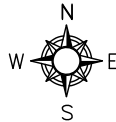
Witnesses to corner location:

Josh Oslund
Dan Greenwald

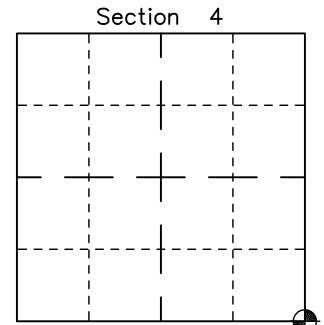
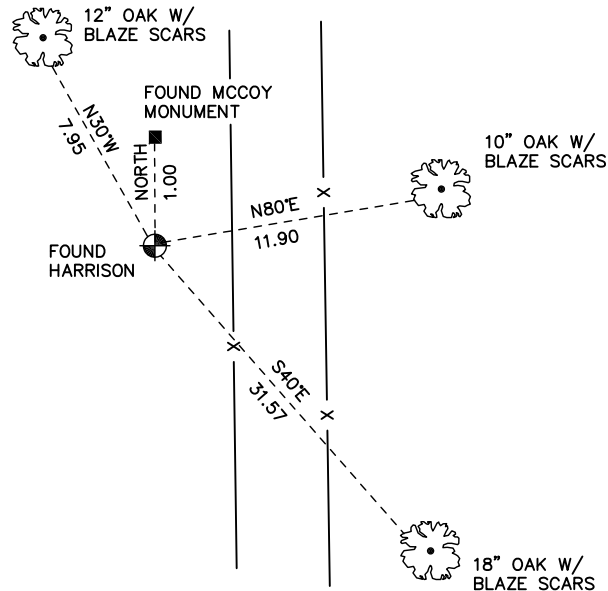
MONROE COUNTY
COORDINATE SYSTEM
NAD 1983 (2007)

HARRISON MONUMENT
Northing (Y) 452626.44
Easting (X) 678305.32

Base Station - 22 182W
Northing (Y) 408053.25
Easting (X) 679287.00



All distances are shown in U.S. Survey Feet.
Ties are to 60D nails set in trees.
Bearings are for tie reference purposes only.
Coordinates were derived from RTK GNSS procedures.

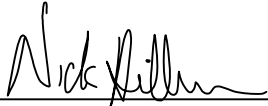


⊙ = LOCATION CORNER
Corner I.D. SE 4
T 19 N R 2 W
Town of Grant
Monroe County, WI.

CERTIFICATE

I, Nicholas M. Hillmer, do hereby certify that this document and the data contained herein was prepared by me or under my direct supervision and that I am a duly Licensed Land Surveyor under the laws of the State of Wisconsin.

Dated this 21st day of May, 2013



Nicholas M. Hillmer, P.L.S. 2909
Anderson Engineering of Minnesota, LLC.

CERTIFIED LAND CORNER

History of corner established since Original Government Survey

In October of 1901 Holden found a stone at this corner. The 1940's McCoy boundary notes show a corner at this location. In November of 1982 William Jung found and accepted a McCoy boundary monument as the best available evidence of the corner.

No. 21902092000

Description of evidence found

On November 28th, 2012, Anderson Engineering of Minnesota located the McCoy monument, a 4 inch U.S. Army Corps of Engineers survey control mark disk set in concrete 0.5 feet above grade. The monument is 1.2 feet east of a 4 inch square wood post with a survey marker sign.

Description of corner and witness monuments, references and accessories used to perpetuate the original or re-established location of this corner:

Witnesses to corner location:

Nick Hillmer
Josh Oslund
Dan Greenwald

MONROE COUNTY
COORDINATE SYSTEM
NAD 1983 (2007)

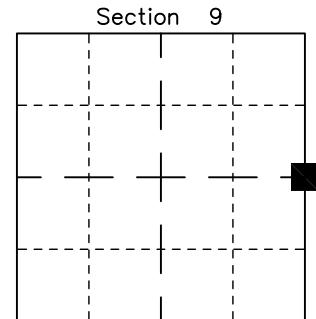
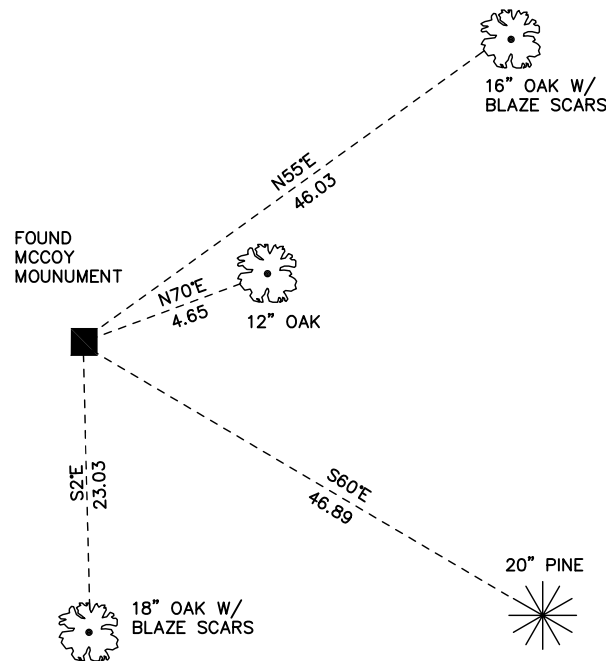
MCCOY MONUMENT
Northing (Y) 450005.21
Easting (X) 678327.95

Base Station - 22 182W
Northing (Y) 408053.25
Easting (X) 679287.00



All distances are shown in U.S. Survey Feet.
Ties are to 60D nails set in trees.
Bearings are for tie reference purposes only.
Coordinates were derived from RTK GNSS procedures.

FIRE BREAK

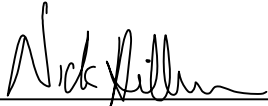


■ = LOCATION CORNER
Corner I.D. E 1/4 9
T 19 N R 2 W
Town of Grant
Monroe County, WI.

CERTIFICATE

I, Nicholas M. Hillmer, do hereby certify that this document and the data contained herein was prepared by me or under my direct supervision and that I am a duly Licensed Land Surveyor under the laws of the State of Wisconsin.

Dated this 21st day of May, 2013



Nicholas M. Hillmer, P.L.S. 2909
Anderson Engineering of Minnesota, LLC.

CERTIFIED LAND CORNER

History of corner established since Original Government Survey

In October of 1901 Holden set a stone at this corner. The 1940's McCoy boundary notes show a corner at this location. In March of 1985 Ronald Parish set a Harrison monument using single proportionate measurement from the east quarter corner of Section 16 and the east quarter corner of Section 9. Parish states that there has been extensive earth moving in the area and any original corner has been obliterated.

Description of evidence found

On November 28th, 2012, Anderson Engineering of Minnesota located the Harrison monument 0.5 feet above grade. The monument is 70 feet +/- east of the centerline of a firebreak and down a small slope.

No. 21902090000

Description of corner and witness monuments, references and accessories used to perpetuate the original or re-established location of this corner:

Witnesses to corner location:

Dan Greenwald
Josh Oslund

MONROE COUNTY
COORDINATE SYSTEM
NAD 1983 (2007)

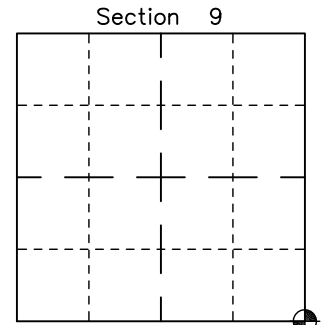
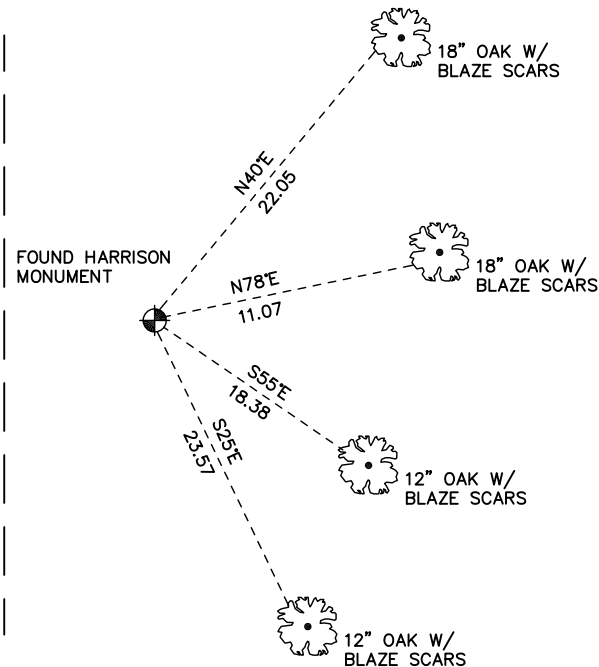
HARRISON MONUMENT
Northing (Y) 447389.78
Easting (X) 678343.57

Base Station - 22 182W
Northing (Y) 408053.25
Easting (X) 679287.00



All distances are shown in U.S. Survey Feet.
Ties are to 60D nails set in trees.
Bearings are for tie reference purposes only.
Coordinates were derived from RTK GNSS procedures.

FIREBREAK

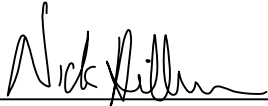


⊙ = LOCATION CORNER
Corner I.D. SE 9
T 19 N R 2 W
Town of Grant
Monroe County, WI.

CERTIFICATE

I, Nicholas M. Hillmer, do hereby certify that this document and the data contained herein was prepared by me or under my direct supervision and that I am a duly Licensed Land Surveyor under the laws of the State of Wisconsin.

Dated this 21st day of May, 2013



Nicholas M. Hillmer, P.L.S. 2909
Anderson Engineering of Minnesota, LLC.

CERTIFIED LAND CORNER

History of corner established since Original Government Survey

In October of 1901 Fred Holden set a stone at this corner. In October of 1914 Keach set a pump point at this corner. The 1940's McCoy boundary notes show a corner at this location. In 1973-1974 Larry Feddersen "tied" into this corner and used it as the corner. In November of 1982 William Jung found and accepted a McCoy boundary marker as the best available evidence of the corner.

Description of evidence found

On November 28th, 2012, Anderson Engineering of Minnesota located the McCoy monument, a 4 inch U.S. Army Corps of Engineers survey control mark disk set in concrete 0.4 feet above grade. The disk is stamped MCCOY BOUNDARY. A 4 inch square wood witness post is 1.0 foot west of the disk.

No. 21902162000

Description of corner and witness monuments, references and accessories used to perpetuate the original or re-established location of this corner:

Witnesses to corner location:

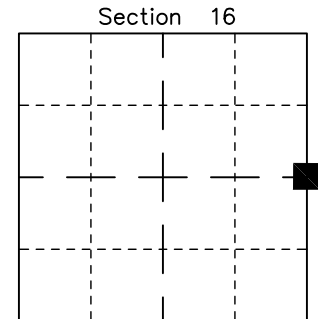
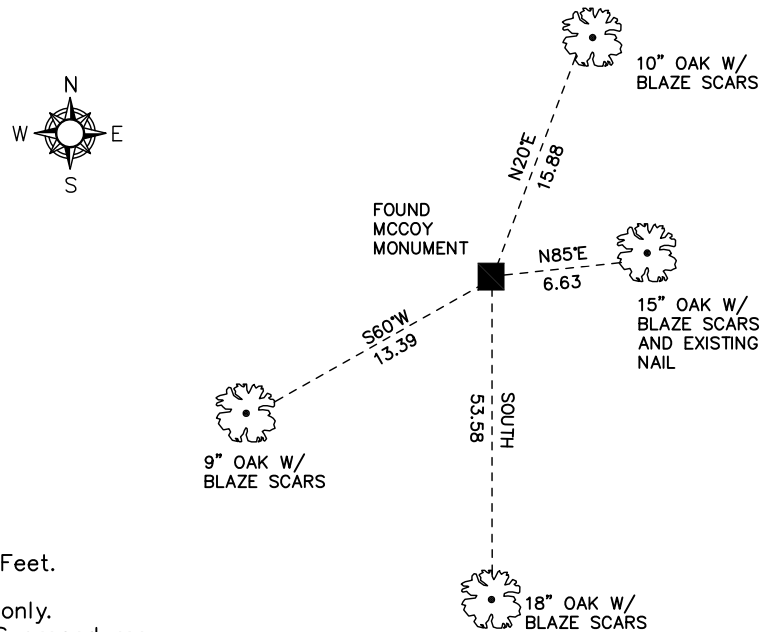
Dan Greenwald
Josh Oslund

MONROE COUNTY
COORDINATE SYSTEM
NAD 1983 (2007)

MCCOY MONUMENT
Northing (Y) 444774.18
Easting (X) 678359.73

Base Station - 22 182W
Northing (Y) 408053.25
Easting (X) 679287.00

All distances are shown in U.S. Survey Feet.
Ties are to 60D nails set in trees.
Bearings are for tie reference purposes only.
Coordinates were derived from RTK GNSS procedures.

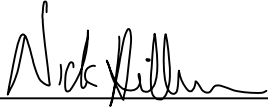


■ = LOCATION CORNER
Corner I.D. E 1/4 16
T 19 N R 2 W
Town of Grant
Monroe County, WI.

CERTIFICATE

I, Nicholas M. Hillmer, do hereby certify that this document and the data contained herein was prepared by me or under my direct supervision and that I am a duly Licensed Land Surveyor under the laws of the State of Wisconsin.

Dated this 21st day of May, 2013



Nicholas M. Hillmer, P.L.S. 2909
Anderson Engineering of Minnesota, LLC.

CERTIFIED LAND CORNER

History of corner established since Original Government Survey

In October of 1914 Keach set a pump point at this corner. The 1940's McCoy boundary notes show a corner at this location. In 1973-1974, Larry Feddersen computed a location for this corner, but the corner was never set. In November of 1982 William Jung found a McCoy boundary marker and accepted it as the best available evidence of the corner.

Description of evidence found

On November 28th, 2012, Anderson Engineering of Minnesota located the McCoy monument, a 4 inch U.S Army Corps of Engineers survey control mark disk set in concrete 1.0 foot below grade. An old barbed wire fence running north-south was found 0.5 feet east of the disk. The mark is 10 feet east of a berm that runs north-south. A 3 inch square wood post was found 0.4 feet north of the disk. A witness post with a survey marker sign was found 1.0 foot south of the disk.

No. 21902160000

Description of corner and witness monuments, references and accessories used to perpetuate the original or re-established location of this corner:

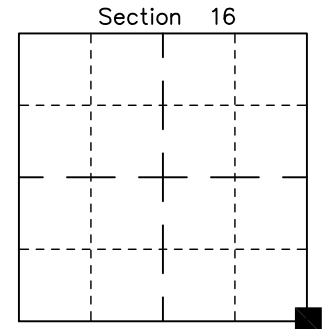
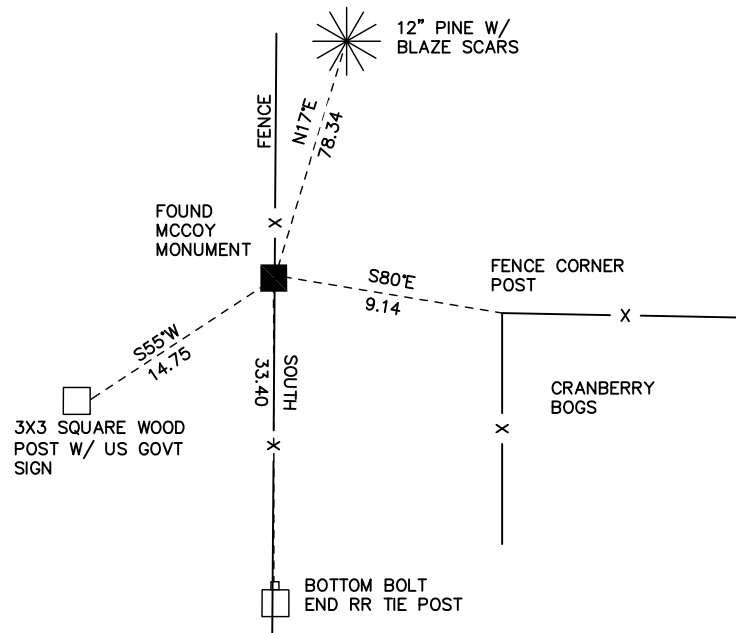
Witnesses to corner location:

Nick Hillmer
Josh Oslund
Dan Greenwald

MONROE COUNTY
COORDINATE SYSTEM
NAD 1983 (2007)

MCCOY MONUMENT
Northing (Y) 442164.30
Easting (X) 678367.25

Base Station - 22 182W
Northing (Y) 408053.25
Easting (X) 679287.00



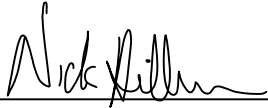
■ = LOCATION CORNER
Corner I.D. SE 16
T 19 N R 2 W
Town of Grant
Monroe County, WI.

All distances are shown in U.S. Survey Feet.
Ties are to 60D nails set in trees.
Bearings are for tie reference purposes only.
Coordinates were derived from RTK GNSS procedures.

CERTIFICATE

I, Nicholas M. Hillmer, do hereby certify that this document and the data contained herein was prepared by me or under my direct supervision and that I am a duly Licensed Land Surveyor under the laws of the State of Wisconsin.

Dated this 21st day of May, 2013



Nicholas M. Hillmer, P.L.S. 2909
Anderson Engineering of Minnesota, LLC.

CERTIFIED LAND CORNER

No. 21902212000

History of corner established since Original Government Survey

In 1978 William Jung found a 3/4 inch iron bar used in previous survey work. Jung replaced the bar with a Harrison monument. While setting the Harrison, Jung found an old iron monument 15 inches to the north and buried.

Description of evidence found

On December 19th, 2012, Anderson Engineering of Minnesota located the Harrison monument.

Description of corner and witness monuments, references and accessories used to perpetuate the original or re-established location of this corner:

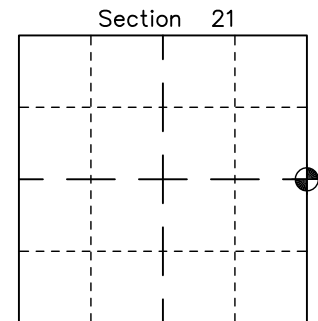
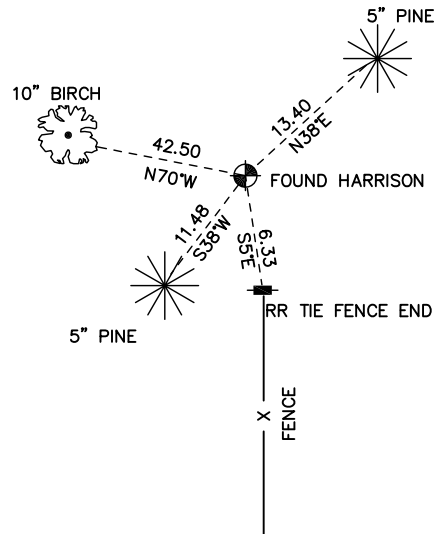
Witnesses to corner location:

Nick Hillmer
Josh Oslund
Dan Greenwald

MONROE COUNTY
COORDINATE SYSTEM
NAD 1983 (2007)

HARRISON MONUMENT
Northing (Y) 439573.95
Easting (X) 678363.47

Base Station - 22 182W
Northing (Y) 408053.25
Easting (X) 679287.00



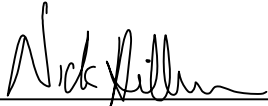
⊙ = LOCATION CORNER
Corner I.D. E 1/4 21
T 19 N R 2 W
Town of Grant
Monroe County, WI.

All distances are shown in U.S. Survey Feet.
Ties are to 60D nails.
Bearings are for tie reference purposes only.
Coordinates were derived from RTK GNSS procedures.

CERTIFICATE

I, Nicholas M. Hillmer, do hereby certify that this document and the data contained herein was prepared by me or under my direct supervision and that I am a duly Licensed Land Surveyor under the laws of the State of Wisconsin.

Dated this 21st day of May, 2013



Nicholas M. Hillmer, P.L.S. 2909
Anderson Engineering of Minnesota, LLC.

CERTIFIED LAND CORNER

History of corner established since Original Government Survey

Fred Holden was here in November of 1906. The 1940's McCoy boundary notes show a corner at this location. H.A Sime and Associates were here in 1973 and set a 3/4 inch iron bar at a two way fence corner. In December of 1989 Bryan Meyer found the 3/4 inch bar and replaced it with a 1 1/2 inch iron pipe.

Description of evidence found

On December 19th, 2012, Anderson Engineering of Minnesota located the 1 1/2 inch open pipe 1.2 feet above grade. A witness post with sign was found 0.3 feet northwest of the pipe. On April 21st, 2013, Anderson Engineering of Minnesota replaced the pipe with a 3/4 inch aluminum drive monument with a 3 1/4 inch cap, stamped "FORT MCCOY BOUNDARY" "2013" "ANDERSON ENG. OF MN."

No. 21902210000

Description of corner and witness monuments, references and accessories used to perpetuate the original or re-established location of this corner:

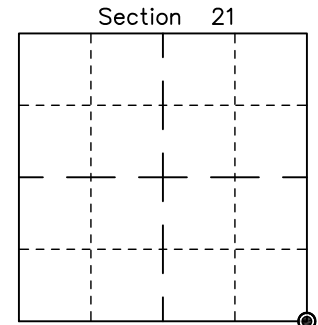
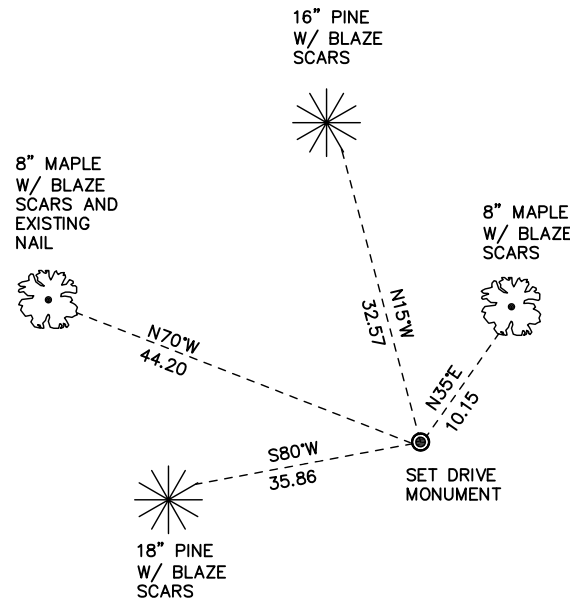
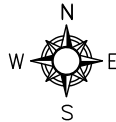
Witnesses to corner location:

Nick Hillmer
Josh Oslund
Dan Greenwald

MONROE COUNTY
COORDINATE SYSTEM
NAD 1983 (2007)

MCCOY DRIVE MONUMENT
Northing (Y) 436948.44
Easting (X) 678353.42

Base Station - 22 182W
Northing (Y) 408053.25
Easting (X) 679287.00



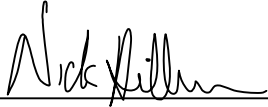
● = LOCATION CORNER
Corner I.D. SE 21
T 19 N R 2 W
Town of Grant
Monroe County, WI.

All distances are shown in U.S. Survey Feet.
Ties are to 60D nails set in trees.
Bearings are for tie reference purposes only.
Coordinates were derived from RTK GNSS procedures.

CERTIFICATE

I, Nicholas M. Hillmer, do hereby certify that this document and the data contained herein was prepared by me or under my direct supervision and that I am a duly Licensed Land Surveyor under the laws of the State of Wisconsin.

Dated this 21st day of May, 2013



Nicholas M. Hillmer, P.L.S. 2909
Anderson Engineering of Minnesota, LLC.

CERTIFIED LAND CORNER

History of corner established since Original Government Survey

Fred A. Holden was here in 1906. The 1940's McCoy boundary notes show a corner at this location. In 1989 Bryan H. Meyer found and accepted a 1 1/4 inch iron pipe with McCoy brass cap 2.5 feet above grade as the corner.

Description of evidence found

On December 19th, 2012, Anderson Engineering of Minnesota located the 1 1/4 inch iron pipe with McCoy brass cap. On April 21st, 2013, Anderson Engineering of Minnesota replaced the pipe with a 3/4 inch aluminum drive monument with a 3 1/4 inch cap, stamped "FORT MCCOY BOUNDARY" "2013" "ANDERSON ENG. OF MN."

No. 21902282000

Description of corner and witness monuments, references and accessories used to perpetuate the original or re-established location of this corner:

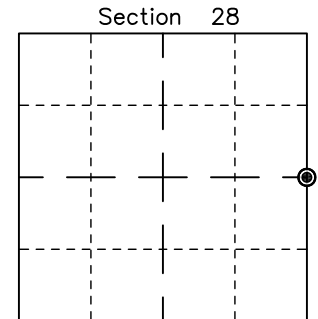
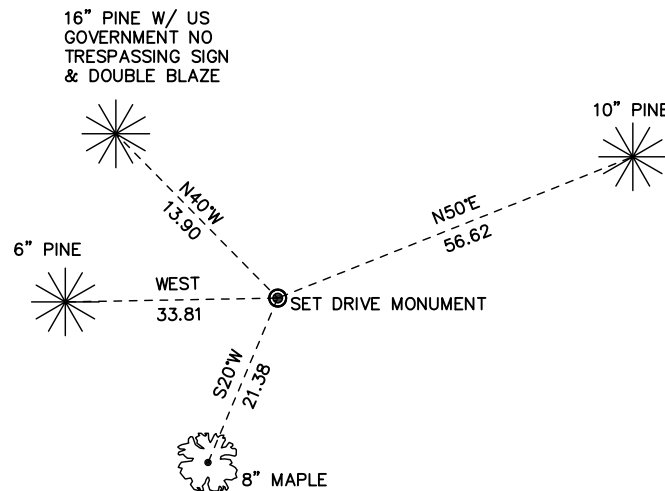
Witnesses to corner location:

Nick Hillmer
Josh Oslund
Dan Greenwald

MONROE COUNTY
COORDINATE SYSTEM
NAD 1983 (2007)

MCCOY DRIVE MONUMENT
Northing (Y) 434334.31
Easting (X) 678410.43

Base Station - 22 182W
Northing (Y) 408053.25
Easting (X) 679287.00



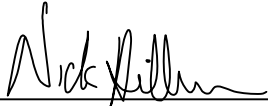
● = LOCATION CORNER
Corner I.D. E 1/4 28
T 19 N R 2 W
Town of Grant
Monroe County, WI.

All distances are shown in U.S. Survey Feet.
Ties are to 60D nails set in trees.
Bearings are for tie reference purposes only.
Coordinates were derived from RTK GNSS procedures.

CERTIFICATE

I, Nicholas M. Hillmer, do hereby certify that this document and the data contained herein was prepared by me or under my direct supervision and that I am a duly Licensed Land Surveyor under the laws of the State of Wisconsin.

Dated this 21st day of May, 2013



Nicholas M. Hillmer, P.L.S. 2909
Anderson Engineering of Minnesota, LLC.

CERTIFIED LAND CORNER

History of corner established since Original Government Survey

The 1940's McCoy boundary notes show a corner at this location.

Description of evidence found

On December 19th, 2012, Anderson Engineering of Minnesota located a 1 1/2 inch iron 0.30 feet above grade. The pipe was accepted as the best available evidence. On April 21st, 2013, Anderson Engineering of Minnesota replaced the pipe with a 3/4 inch aluminum drive monument with a 3 1/4 inch cap, stamped "FORT MCCOY BOUNDARY" "2013" "ANDERSON ENG. OF MN."

No. 21902282010

Description of corner and witness monuments, references and accessories used to perpetuate the original or re-established location of this corner:

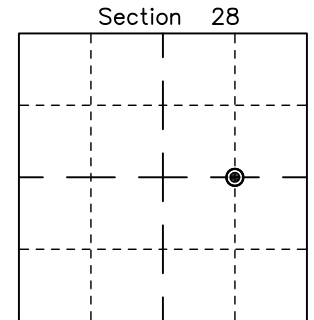
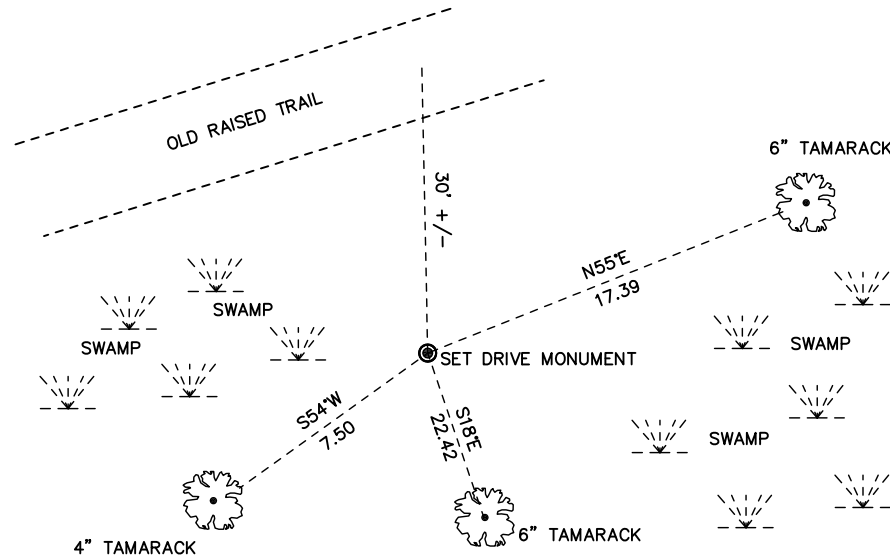
Witnesses to corner location:

Nick Hillmer
Josh Oslund
Dan Greenwald

MONROE COUNTY
COORDINATE SYSTEM
NAD 1983 (2007)

MCCOY DRIVE MONUMENT
Northing (Y) 434301.32
Easting (X) 677073.78

Base Station - 22 182W
Northing (Y) 408053.25
Easting (X) 679287.00



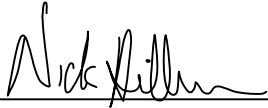
● = LOCATION CORNER
Corner I.D. CE 1/16 28
T 19 N R 2 W
Town of Grant
Monroe County, WI.

All distances are shown in U.S. Survey Feet.
Ties are to 60D nails set in trees.
Bearings are for tie reference purposes only.
Coordinates were derived from RTK GNSS procedures.

CERTIFICATE

I, Nicholas M. Hillmer, do hereby certify that this document and the data contained herein was prepared by me or under my direct supervision and that I am a duly Licensed Land Surveyor under the laws of the State of Wisconsin.

Dated this 21st day of May, 2013



Nicholas M. Hillmer, P.L.S. 2909
Anderson Engineering of Minnesota, LLC.

CERTIFIED LAND CORNER

History of corner established since Original Government Survey

The 1940's McCoy boundary notes show a corner at this location

No. 21902281010

Description of evidence found

On December 19th, 2012, Anderson Engineering of Minnesota located a 1 1/2 inch pipe 3 feet below grade. The pipe was accepted as the best available evidence. On April 21st, 2013, Anderson Engineering of Minnesota replaced the pipe with a 3/4 inch aluminum drive monument with a 3 1/4 inch cap, stamped "FORT MCCOY BOUNDARY" "2013" "ANDERSON ENG. OF MN."

Description of corner and witness monuments, references and accessories used to perpetuate the original or re-established location of this corner:

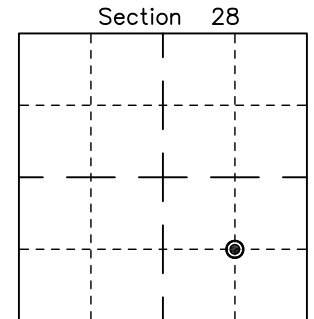
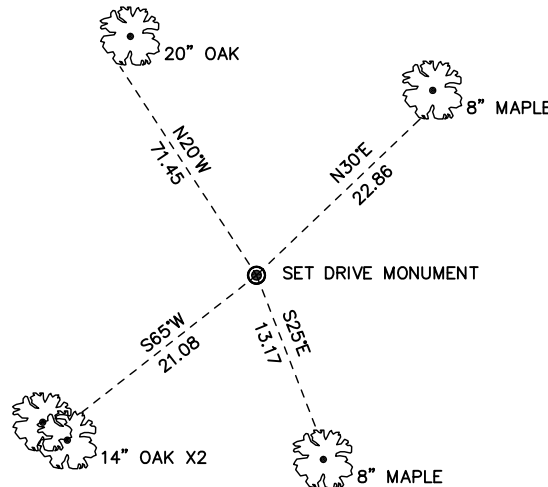
Witnesses to corner location:

Nick Hillmer
Josh Oslund
Dan Greenwald

MONROE COUNTY
COORDINATE SYSTEM
NAD 1983 (2007)

MCCOY DRIVE MONUMENT
Northing (Y) 432981.78
Easting (X) 677081.58

Base Station - 22 182W
Northing (Y) 408053.25
Easting (X) 679287.00



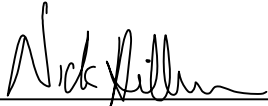
● = LOCATION CORNER
Corner I.D. SE 1/16 28
T 19 N R 2 W
Town of Grant
Monroe County, WI.

All distances are shown in U.S. Survey Feet.
Ties are to 60D nails set in trees.
Bearings are for tie reference purposes only.
Coordinates were derived from RTK GNSS procedures.

CERTIFICATE

I, Nicholas M. Hillmer, do hereby certify that this document and the data contained herein was prepared by me or under my direct supervision and that I am a duly Licensed Land Surveyor under the laws of the State of Wisconsin.

Dated this 21st day of May, 2013



Nicholas M. Hillmer, P.L.S. 2909
Anderson Engineering of Minnesota, LLC.

CERTIFIED LAND CORNER

History of corner established since Original Government Survey

The 1940's McCoy boundary notes show a corner at this location.

Description of evidence found

On December 19th, 2012, Anderson Engineering of Minnesota located a 1 1/2 inch pipe in the side of a mound. The pipe was accepted as the best available evidence. On April 21st, 2013, Anderson Engineering of Minnesota replaced the pipe with a 3/4 inch aluminum drive monument with a 3 1/4 inch cap, stamped "FORT MCCOY BOUNDARY" "2013" "ANDERSON ENG. OF MN."

No. 21902281020

Description of corner and witness monuments, references and accessories used to perpetuate the original or re-established location of this corner:

Witnesses to corner location:

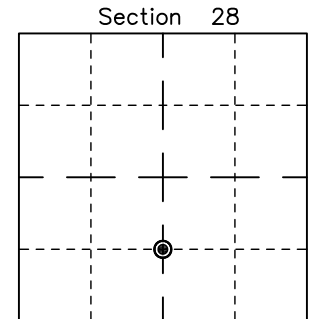
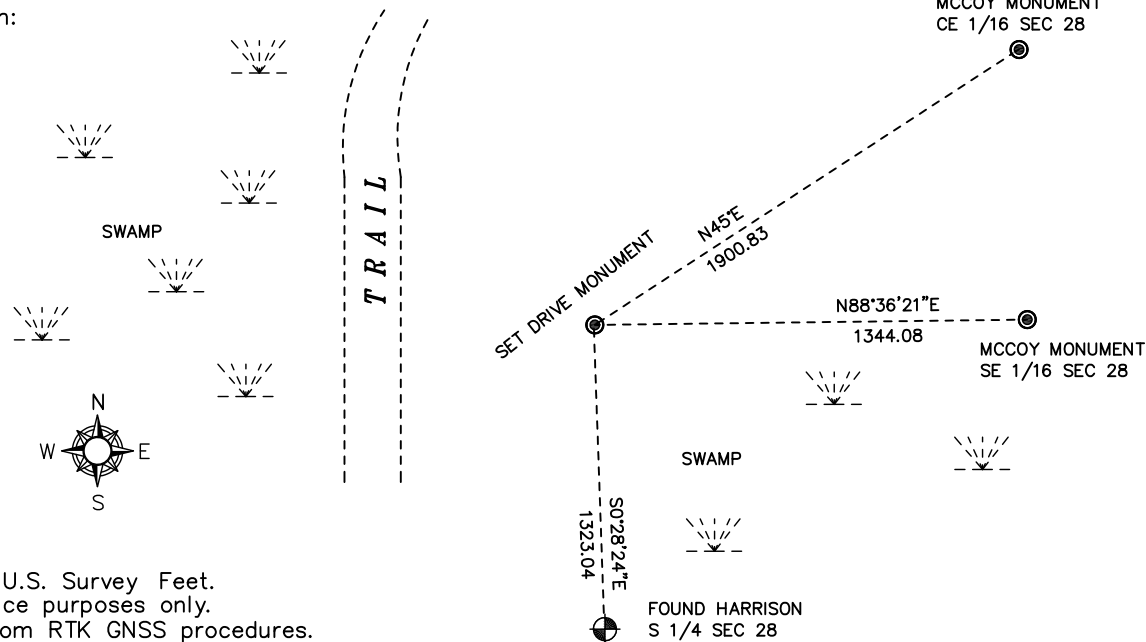
Nick Hillmer
Josh Oslund
Dan Greenwald

MONROE COUNTY
COORDINATE SYSTEM
NAD 1983 (2007)

MCCOY DRIVE MONUMENT
Northing (Y) 432949.08
Easting (X) 675737.90

Base Station - 22 182W
Northing (Y) 408053.25
Easting (X) 679287.00

All distances are shown in U.S. Survey Feet.
Bearings are for tie reference purposes only.
Coordinates were derived from RTK GNSS procedures.

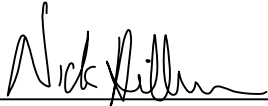


● = LOCATION CORNER
Corner I.D. CS 1/16 28
T 19 N R 2 W
Town of Grant
Monroe County, WI.

CERTIFICATE

I, Nicholas M. Hillmer, do hereby certify that this document and the data contained herein was prepared by me or under my direct supervision and that I am a duly Licensed Land Surveyor under the laws of the State of Wisconsin.

Dated this 21st day of May, 2013



Nicholas M. Hillmer, P.L.S. 2909
Anderson Engineering of Minnesota, LLC.

CERTIFIED LAND CORNER

History of corner established since Original Government Survey

Fred Holden was here in August of 1911 and found the original bearing trees. Holden also marked a new tree. In November of 1985 Gary Dechant could not find any trace of the bearing trees. Dechant set a Harrison monument by projecting the line between the northwest corner of Section 33 and an east-west fence at the northwest corner of the Northeast Quarter of the Northwest Quarter of Section 33 where it intersects the north-south fence along the north-south quarter line of Section 33. Dechant states the corner location fits Holden's recorded distances within the section extremely well.

Description of evidence found

On December 5th, 2012, Anderson Engineering of Minnesota located the Harrison monument flush with the ground and 0.7 feet east of a metal "T" post with a blank wooden sign. An old barbed wire fence running north-south was found 2.3 feet east of the monument.

No. 21902280020

Description of corner and witness monuments, references and accessories used to perpetuate the original or re-established location of this corner:

Witnesses to corner location:

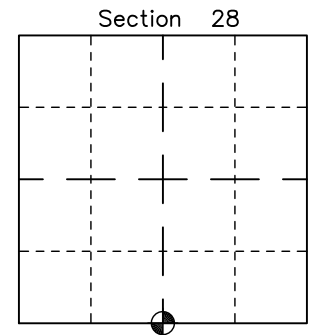
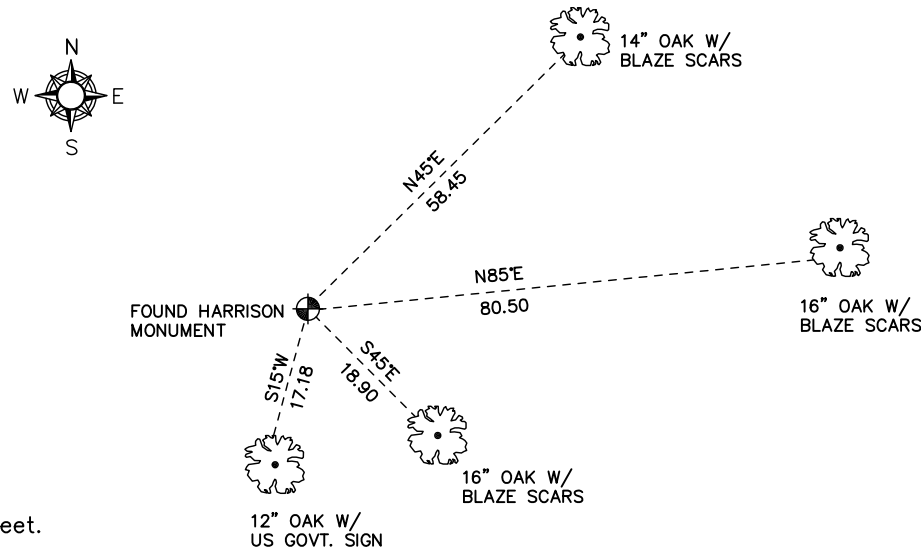
Nick Hillmer
Josh Oslund
Dan Greenwald

MONROE COUNTY
COORDINATE SYSTEM
NAD 1983 (2007)

HARRISON MONUMENT
Northing (Y) 431626.08
Easting (X) 675748.83

Base Station - 22 182W
Northing (Y) 408053.25
Easting (X) 679287.00

All distances are shown in U.S. Survey Feet.
Ties are to 60D nails set in trees.
Bearings are for tie reference purposes only.
Coordinates were derived from RTK GNSS procedures.

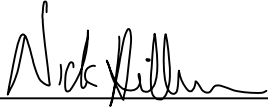


⊙ = LOCATION CORNER
Corner I.D. S 1/4 28
T 19 N R 2 W
Town of Grant
Monroe County, WI.

CERTIFICATE

I, Nicholas M. Hillmer, do hereby certify that this document and the data contained herein was prepared by me or under my direct supervision and that I am a duly Licensed Land Surveyor under the laws of the State of Wisconsin.

Dated this 21st day of May, 2013



Nicholas M. Hillmer, P.L.S. 2909
Anderson Engineering of Minnesota, LLC.

CERTIFIED LAND CORNER

History of corner established since Original Government Survey

The 1940's McCoy boundary notes show a corner at this location.

No. 21902333020

Description of evidence found

On December 5th, 2012, Anderson Engineering of Minnesota located a 1 inch pipe near the corners location. The monument was not accepted as the corner. On April 21st, 2013, Anderson Engineering of Minnesota set a 30 inch Berntsen aluminum dig monument with a 3 1/4 inch cap, stamped "FORT MCCOY BOUNDARY" "2013" "ANDERSON ENG. OF MN." The monument is set midway online between the north quarter corner and the center of Section 33.

Description of corner and witness monuments, references and accessories used to perpetuate the original or re-established location of this corner:

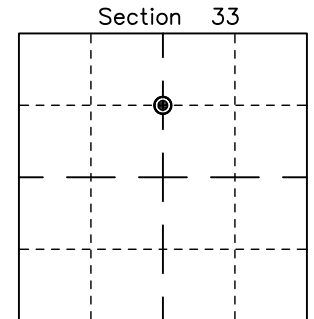
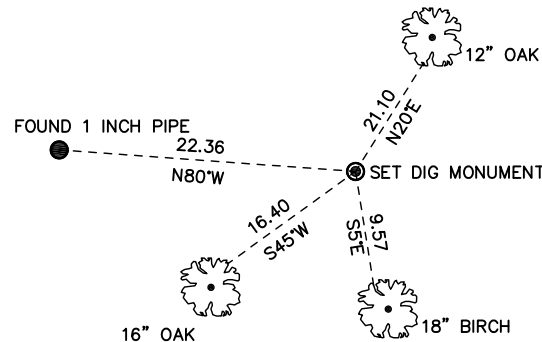
Witnesses to corner location:

Nick Hillmer
Josh Oslund
Dan Greenwald

MONROE COUNTY
COORDINATE SYSTEM
NAD 1983 (2007)

MCCOY DIG MONUMENT
Northing (Y) 430280.87
Easting (X) 675786.04

Base Station - 22 182W
Northing (Y) 408053.25
Easting (X) 679287.00



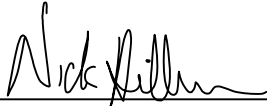
⊙ = LOCATION CORNER
Corner I.D. CN 1/16 33
T 19 N R 2 W
Town of Grant
Monroe County, WI.

All distances are shown in U.S. Survey Feet.
Ties are to 60D nails set in trees.
Bearings are for tie reference purposes only.
Coordinates were derived from RTK GNSS procedures.

CERTIFICATE

I, Nicholas M. Hillmer, do hereby certify that this document and the data contained herein was prepared by me or under my direct supervision and that I am a duly Licensed Land Surveyor under the laws of the State of Wisconsin.

Dated this 21st day of May, 2013



Nicholas M. Hillmer, P.L.S. 2909
Anderson Engineering of Minnesota, LLC.


CERTIFIED LAND CORNER

History of corner established since Original Government Survey

The 1940's McCoy boundary notes show a corner at this location.

Description of evidence found

On December 5th, 2012, Anderson Engineering of Minnesota located the McCoy monument, a 4 inch U.S. Army Corps of Engineers survey control mark disk set in concrete. On April 18th, 2013, Anderson Engineering of Minnesota set a 30 inch Berntsen aluminum dig monument with a 3 1/4 inch aluminum cap, stamped "FORT MCCOY BOUNDARY" "2013" "ANDERSON ENG. OF MN" at the intersection of the existing monumented boundary line running north-south and on the legal north sixteen line.

No. _____


Description of corner and witness monuments, references and accessories used to perpetuate the original or re-established location of this corner:

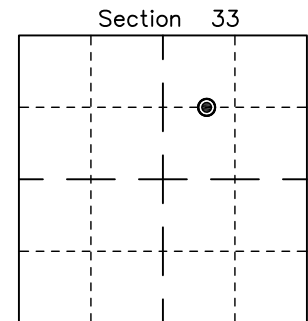
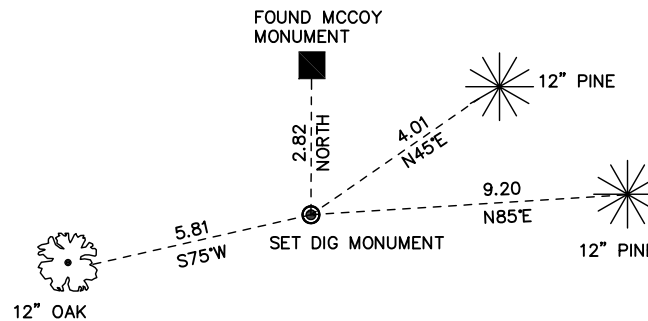
Witnesses to corner location:

Nick Hillmer
Josh Oslund
Dan Greenwald

MONROE COUNTY
 COORDINATE SYSTEM
NAD 1983 (2007)

MCCOY DIG MONUMENT
 Northing (Y) 430294.88
 Easting (X) 676434.16

Base Station - 22 182W
 Northing (Y) 408053.25
 Easting (X) 679287.00



⊙ = LOCATION CORNER

Corner I.D. NE 22 ACRES SWNE 33

T 19 N R 2 W

Town of Grant

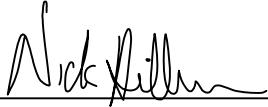
Monroe County, WI.

All distances are shown in U.S. Survey Feet.
 Ties are to 60D nails set in trees.
 Bearings are for tie reference purposes only.
 Coordinates were derived from RTK GNSS procedures.

CERTIFICATE

I, Nicholas M. Hillmer, do hereby certify that this document and the data contained herein was prepared by me or under my direct supervision and that I am a duly Licensed Land Surveyor under the laws of the State of Wisconsin.

Dated this 21st day of May, 2013



Nicholas M. Hillmer, P.L.S. 2909
Anderson Engineering of Minnesota, LLC.


CERTIFIED LAND CORNER

History of corner established since Original Government Survey

The 1940's McCoy boundary notes show a corner at this location.

Description of evidence found

On December 5th, 2012, Anderson Engineering of Minnesota located the McCoy monument, a 4 inch U.S. Army Corps of Engineers survey control mark disk set in concrete 0.3 feet above grade. Metal fence posts with public hunting grounds signs were found 1.0 foot southwest and northeast of the monument. On April 18th, 2013, Anderson Engineering of Minnesota set a 30 inch Berntsen aluminum dig monument with a 3 1/4 inch aluminum cap, stamped "FORT MCCOY BOUNDARY" "2013" "ANDERSON ENG. OF MN" at the intersection of the existing monumented boundary line running north-south and on the east-west quarter line.

No. _____


Description of corner and witness monuments, references and accessories used to perpetuate the original or re-established location of this corner:

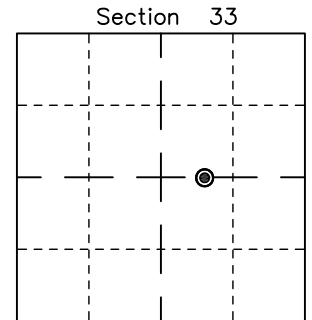
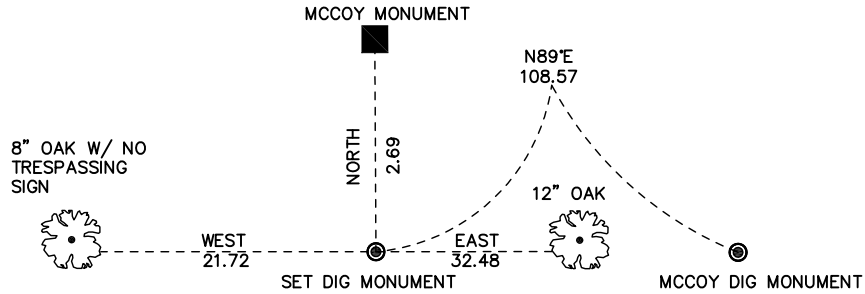
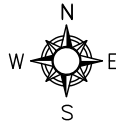
Witnesses to corner location:

Nick Hillmer
Josh Oslund
Dan Greenwald

MONROE COUNTY
 COORDINATE SYSTEM
NAD 1983 (2007)

MCCOY DIG MONUMENT
 Northing (Y) 428946.30
 Easting (X) 676472.04

Base Station - 22 182W
 Northing (Y) 408053.25
 Easting (X) 679287.00



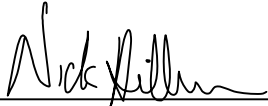
● = LOCATION CORNER
 Corner I.D. SE 22 ACRES SWNE 33
T 19 N R 2 W
 Town of Grant
 Monroe County, WI.

All distances are shown in U.S. Survey Feet.
 Ties are to 60D nails set in trees.
 Bearings are for tie reference purposes only.
 Coordinates were derived from RTK GNSS procedures.

CERTIFICATE

I, Nicholas M. Hillmer, do hereby certify that this document and the data contained herein was prepared by me or under my direct supervision and that I am a duly Licensed Land Surveyor under the laws of the State of Wisconsin.

Dated this 21st day of May, 2013



Nicholas M. Hillmer, P.L.S. 2909
Anderson Engineering of Minnesota, LLC.

Description of corner and witness monuments, references and accessories used to perpetuate the original or re-established location of this corner:

Witnesses to corner location:

Nick Hillmer
Josh Oslund
Dan Greenwald

MONROE COUNTY
COORDINATE SYSTEM
NAD 1983 (2007)

MCCOY DIG MONUMENT
Northing (Y) 428948.08
Easting (X) 676580.59

Base Station - 22 182W
Northing (Y) 408053.25
Easting (X) 679287.00



All distances are shown in U.S. Survey Feet.
Ties are to 60D nails set in trees.
Bearings are for tie reference purposes only.
Coordinates were derived from RTK GNSS procedures.

CERTIFIED LAND CORNER

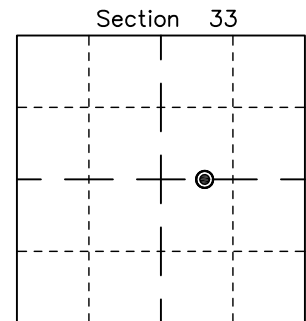
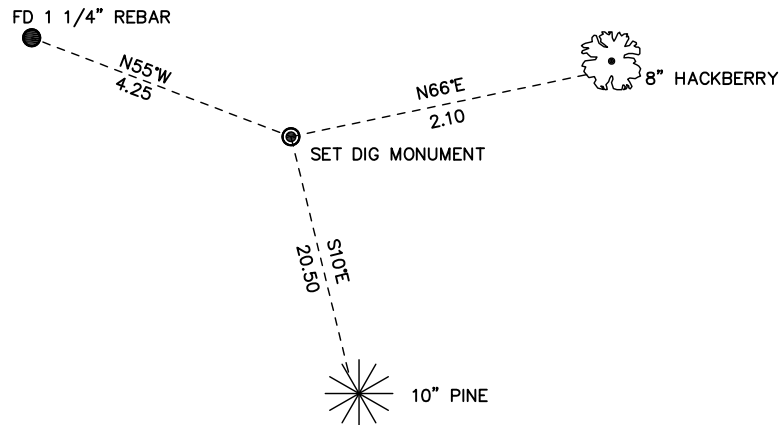
No. _____

History of corner established since Original Government Survey

This corner was set in 1976 by James Denzine while completing a survey for the Wisconsin Department of Natural Resources, as of record CSR 1889.

Description of evidence found

On December 5th, 2012, Anderson Engineering of Minnesota located a 1 1/4 inch rebar flush with the ground. Denzine's monument was not accepted as the corner. On April 18th, 2013, Anderson Engineering of Minnesota set a 30 inch Berntsen aluminum dig monument with a 3 1/4 inch aluminum cap, stamped "FORT MCCOY BOUNDARY" "2013" "ANDERSON ENG. OF MN." The monument was set at the intersection of the east-west quarter line and a line parallel with the east line of the East Half of the West Half of the Southeast Quarter of Section 33 beginning on the south line of said Section 33 99 feet east of the southwest corner of the East Half of the Southwest Quarter of the Southeast Quarter.



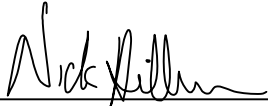
⊙ = LOCATION CORNER
Corner I.D. N END OF
PARALLEL LINE & 1/4 LINE

T 19 N R 2 W
Town of Grant
Monroe County, WI.

CERTIFICATE

I, Nicholas M. Hillmer, do hereby certify that this document and the data contained herein was prepared by me or under my direct supervision and that I am a duly Licensed Land Surveyor under the laws of the State of Wisconsin.

Dated this 21st day of May, 2013



Nicholas M. Hillmer, P.L.S. 2909
Anderson Engineering of Minnesota, LLC.

CERTIFIED LAND CORNER

No. _____
[]

History of corner established since Original Government Survey

This corner was set in 1976 by James Denzine while completing a survey for the Wisconsin Department of Natural Resources as of record CSR 1889.

Description of evidence found

On December 5th, 2012, Anderson Engineering of Minnesota located the 1 1/8 inch rebar set by Denzine. On April 18th, 2013, Anderson Engineering of Minnesota replaced the rebar with a 30 inch Berntsen aluminum dig monument with a 3 1/4 inch aluminum cap, stamped "FORT MCCOY BOUNDARY" "2013" "ANDERSON ENG. OF MN." The monument is set on the south line of Section 33 99 feet east of the southwest corner of the East Half of the Southwest Quarter of the Southeast Quarter.

Description of corner and witness monuments, references and accessories used to perpetuate the original or re-established location of this corner:

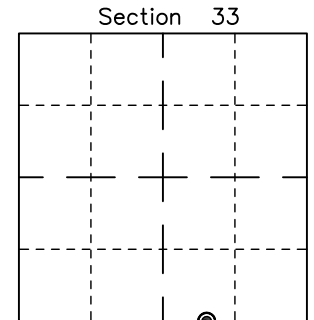
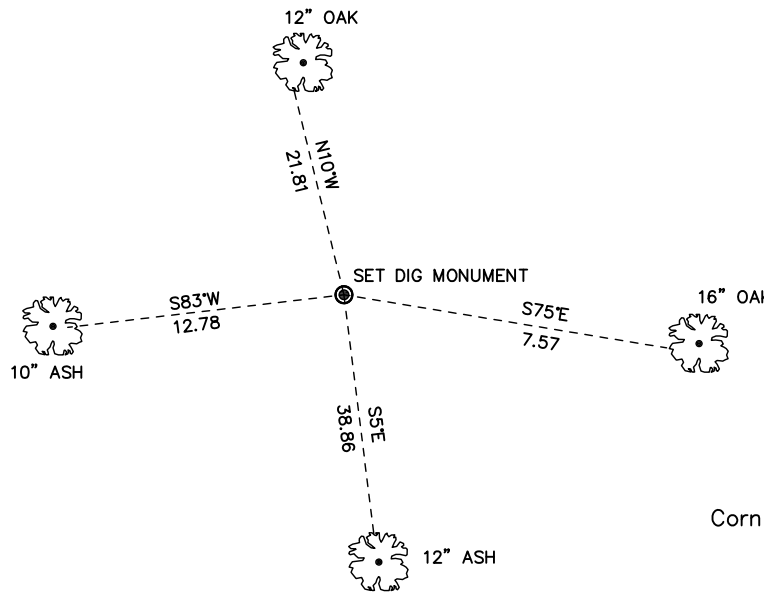
Witnesses to corner location:

Nick Hillmer
Josh Oslund
Dan Greenwald

MONROE COUNTY
COORDINATE SYSTEM
NAD 1983 (2007)

MCCOY DIG MONUMENT
Northing (Y) 426305.16
Easting (X) 676644.91

Base Station - 22 182W
Northing (Y) 408053.25
Easting (X) 679287.00



⊙ = LOCATION CORNER

Corner I.D. 99 FEET EAST OF WE 1/64

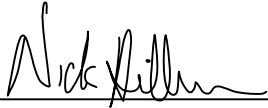
T 19 N R 2 W
Town of Grant
Monroe County, WI.

All distances are shown in U.S. Survey Feet.
Ties are to 60D nails set in trees.
Bearings are for tie reference purposes only.
Coordinates were derived from RTK GNSS procedures.

CERTIFICATE

I, Nicholas M. Hillmer, do hereby certify that this document and the data contained herein was prepared by me or under my direct supervision and that I am a duly Licensed Land Surveyor under the laws of the State of Wisconsin.

Dated this 21st day of May, 2013



Nicholas M. Hillmer, P.L.S. 2909
Anderson Engineering of Minnesota, LLC.

CERTIFIED LAND CORNER

History of corner established since Original Government Survey

In 1976 James Denzine set a 1 1/8 inch rebar for this corner while completing a boundary survey for the Wisconsin Department of Natural Resources, per CSR 1889.

No. 21902330015

Description of evidence found

On December 5th, 2012, Anderson Engineering of Minnesota located the 1 1/8 inch rebar 0.2 feet below grade. On April 18th, 2013, Anderson Engineering of Minnesota replaced the rebar with a 30 inch Berntsen aluminum dig monument with a 3 1/4 inch aluminum cap, stamped "FORT MCCOY BOUNDARY" "2013" "ANDERSON ENG. OF MN."

Description of corner and witness monuments, references and accessories used to perpetuate the original or re-established location of this corner:

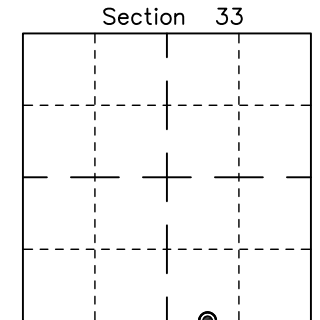
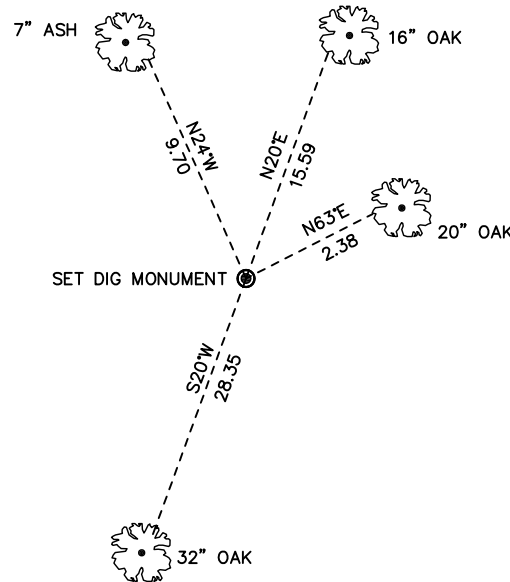
Witnesses to corner location:

Nick Hillmer
Josh Oslund
Dan Greenwald

MONROE COUNTY
COORDINATE SYSTEM
NAD 1983 (2007)

MCCOY DIG MONUMENT
Northing (Y) 426303.96
Easting (X) 676545.91

Base Station - 22 182W
Northing (Y) 408053.25
Easting (X) 679287.00



⊙ = LOCATION CORNER
Corner I.D. WE 1/64 33
T 19 N R 2 W
Town of Grant
Monroe County, WI.

All distances are shown in U.S. Survey Feet.
Ties are to 60D nails set in trees.
Bearings are for tie reference purposes only.
Coordinates were derived from RTK GNSS procedures.