

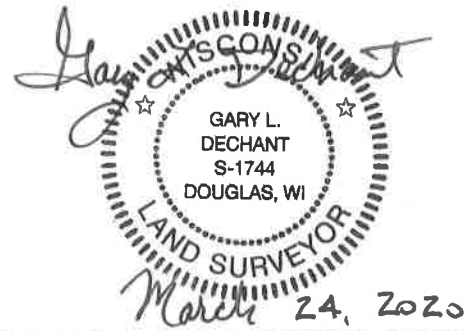
**U.S. PUBLIC LAND CORNER
MAINTENANCE**

21

Corner ID: SE Sec. 1, T19N-R2W
21902010000

<u>DATE</u>	<u>CREW</u>	<u>MONUMENT INFO</u>
March 19, 2020	Zachariah P. Dechant Gary L. Dechant	Existing Harrison, intact, set sign 2' north. 123' north of center of Aspen Ave, 43' east of driveway 21960 Aspen 1980 witness stone on north side of Harrison.

	<u>Compass Bearing</u>	<u>Distance</u>
1) Set 3/4"x24" round iron bar, down 6", 7' SW of 16" Jack Pine	N9E	15.92'
2) Set 3/4"x24" round iron bar, down 6", 4' NW of 5" White Pine	S62E	23.45'
3) Set 3/4"x24" round iron bar, down 6", 4' NW of 6" White Pine	S20E	24.16'
4) Set 3/4"x24" round iron bar, down 6", 4' SE of 5" White Pine	N51W	19.09'



I, Mark R. Heidecke, do hereby certify that on the 13th day of May 19 80, I found ~~XXXXXX~~ (no evidence) of the Southeast corner of Section 1, T19 N, R 2 W Fourth Principal Meridian, and I re-established said corner according to the Wisconsin Statutes as shown and described hereon.

Dated this 13th day of May 19 80.

Mark R. Heidecke
Registered Land Surveyor
Title

History of corner establishment since Original Government Survey

No subsequent history of monument perpetuation since the Original U. S. Government Survey.

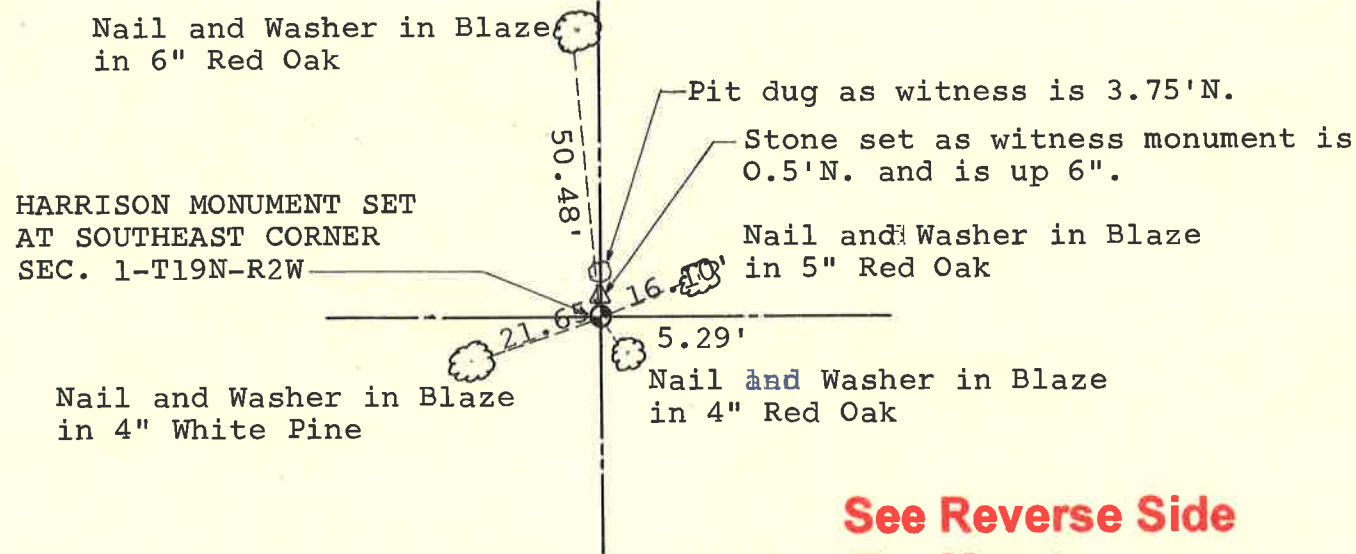
Description of corner evidence found:

After searching the area for evidence and finding none, a Harrison monument was set at the corner. The corner was established on a straight line between the East 1/4 Corner of Section 12-T19N-R2W (reestablished May 13, 1980) and the Northeast Corner of Section 1-T19N-R2W by single proportionate measurement between said corners.

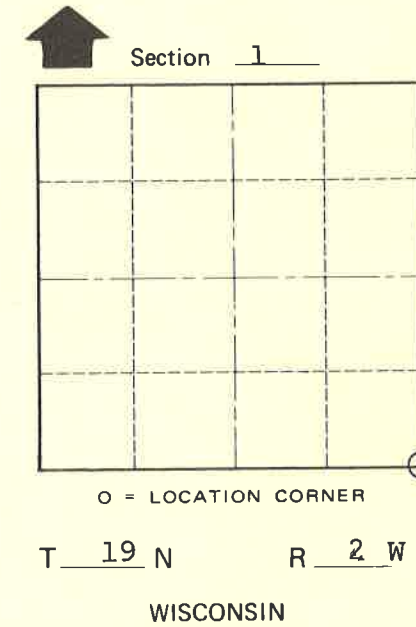
Description of corner and witness monuments, references and accessories used to perpetuate the original or re-established location of this corner:

Witnesses to corner location:

Mark Heidecke
Lawrence Feddersen



See Reverse Side For Maintenance



COUNTY SURVEYOR FORM NO. 1

SURVEY CONTROL ORDER

Horizontal	
Vertical	

WISCONSIN COORDINATE SYSTEM

Corner	East (X)	North (Y)	Elevation (Z)	Zone
Control Sta. Name				

~~City/Village/Town~~ of Grant
County of Monroe
Wisconsin