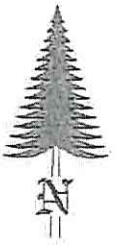
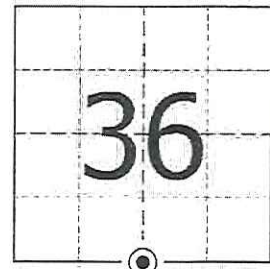


JACKSON COUNTY - U.S. PUBLIC LAND SURVEY MONUMENT RECORD

TYPE OF MONUMENT: Cast Iron Harrison Monument
 REFERENCED FOR SURVEY RECORDED IN CSM# _____ OR CSR# _____
 SURVEYOR'S FILE# OR PROJECT# Fieldbook: T20N-R2W, Pg. 4 - 5
 DRAWN BY: Ethan Remus
 WITNESS: Ethan Remus

CORNER VOL. 10, PAGE 1657
 CORNER# 22002360020
 SECTION 36, T 20 N, R 2W # 2
 S1/4 CORNER

GEOGRAPHIC LOCATION: NAD 83 (91) WISCRS-Jackson County
 COUNTY COORDINATE SYSTEM
 (TO BE ASSIGNED BY COUNTY)
 LATT: 44°09'36.94545" N
 LONG: 90°33'48.41244" W
 N = 48215.4622
 E = 162289.2800



LOCATION

(INDICATE W/ MONUMENT SYMBOL)

BASIS FOR MONUMENT LOCATION:

Please describe if this is a found, obliterated or lost corner. Give a complete history of the corner listing the vol. & page, dates, surveyor and description of found monument. Please list all parole testimony and who provided it as well as other witness of recovery. Please describe the best way to reach this corner. Indicate how obstructed this monument might be for GPS observations. Continue on backside if necessary.

* James Freeman set a post for the quarter corner as part of the original Township Line survey in 1845. He referenced two bearing trees, a 16" Pine N31°E - 46.86', and a 20" Pine N15°W - 0.66'.

* D.A. Blencoe used this corner during his resurvey of South Millston around 1936. He notes the original corner as lost. He reestablished it midway on-line between section corners E-W and set a standard capped pipe in a mound of earth with pits E-W. He also set a 4" oak post on the North side of his pipe. (Blencoe's South Millston Fieldbook on Pg. 73)

* Bill Jung visited this corner in 1982. He found a 1-1/2" x 46" iron pipe. He did not believe it to be Blencoe's pipe, but thought it fit well, so he accepted it as the quarter corner. He replaced the pipe with a Harrison monument and referenced it to four bearing trees and an old stump. He also drove a steel T-Post West of the Harrison. He notes the corner sits in what may be Blencoe's old mound. (See previous tie sheet)

* In December of 2015, I found Jung's Harrison in excellent condition, flush in a slight mound of earth with a steel T-Post about 8" West. I found Jung's four bearing trees as depicted below, nails were all grown over. I hacked out the nails in his NE and SE BT's and measured to the corner, fitting Jung's distances exactly. I did not find the old stump to the North which Jung had referenced. I accepted the Harrison as the quarter corner, drove a 7' steel witness sign post 1' South and drove four rebar for references as depicted below. I could not observe the corner with GPS due to the mature plantation pine. I set control in a clearcut about 550' to the North and turned in. Corner can be accessed by a logging trail running South from Rudd Rd to the County Line, then go East on an old logging trail to the corner.

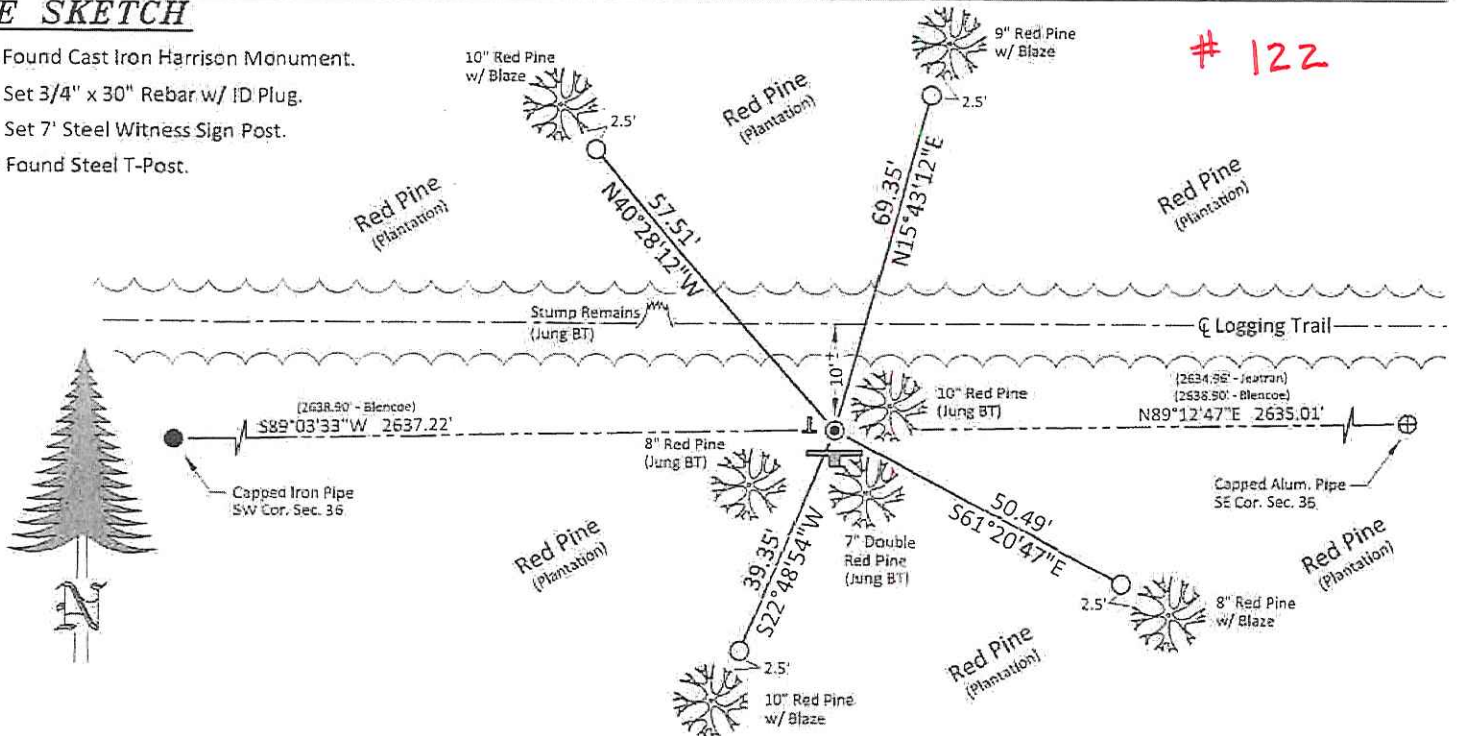
CERTIFIED CORRECT AND COMPLETE TO THE BEST OF MY KNOWLEDGE AND BELIEF:

Ethan D. Remus
 Professional Land Surveyor
 DATE: March 23, 2016

TIE SKETCH

- ⊙ = Found Cast Iron Harrison Monument.
- = Set 3/4" x 30" Rebar w/ ID Plug.
- ⚡ = Set 7' Steel Witness Sign Post.
- ⇨ = Found Steel T-Post.

122



I, William C. Jung, do hereby certify that on the 8th day of November 1982, I found (evidence) ~~no evidence~~ of the North 1/4 corner of Section 1, T 19 N, R 2 W Fourth Principal Meridian, and I re-established said corner according to the Wisconsin Statutes as shown and described hereon.

Dated this 23rd day of Feb. 1983.
William C. Jung
 Deputy County Surveyor
Title

History of corner establishment since Original Government Survey

David Blencoe, from Jackson County, set an iron pipe at this corner in about 1936. In 1980, Heidecke found an iron pipe at the N1/4 of Section 1 and used it as the corner.

Description of corner evidence found:

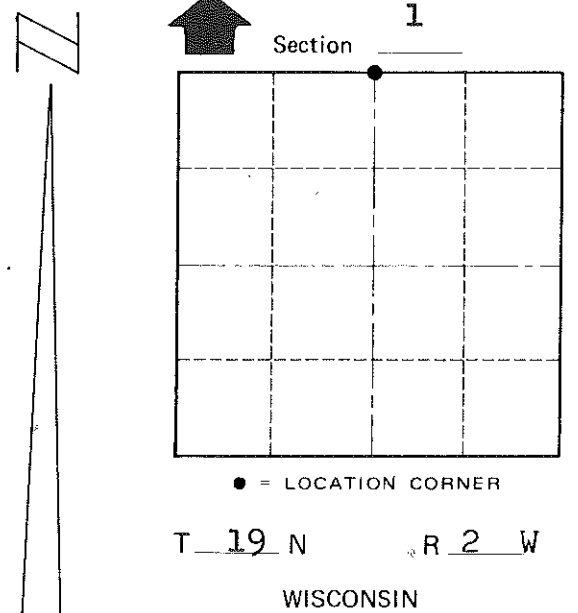
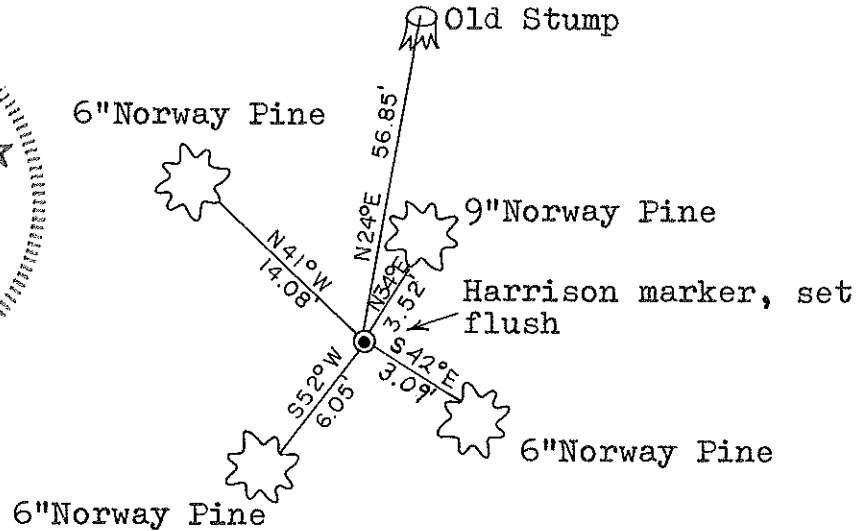
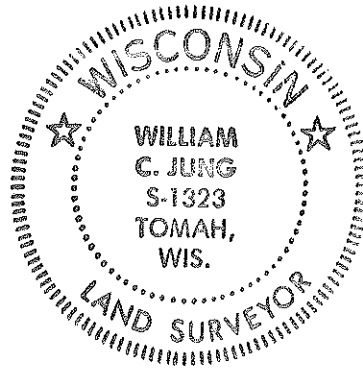
I found Heidecke's pipe and used it as the corner. This does not appear to have been Blencoe's pipe. It looks as if his pipe was destroyed when the tree plantation was put in. Feddersen (Heidecke's former employer) said that this pipe fit very well though, and thus Heidecke used the pipe. This pipe measured 1 1/2"x46". I removed the pipe and replaced it with a Harrison marker. The corner sits on top of what may remain of Blencoe's mound. The corner is in a tree plantation. I set a steel fence post to the West of the Harrison.

Description of corner and witness monuments, references and accessories used to perpetuate the original or re-established location of this corner:

Witnesses to corner location:

William Jung

Melvin Pliner



Note: All bearing trees are double blazed with each distance measured to a nail & cap set in the lower blaze.

Approved: **HARLEY A. SIME**
MONROE CO. SURVEYOR

SURVEY CONTROL ORDER

Horizontal	_____
Vertical	_____

WISCONSIN COORDINATE SYSTEM

Corner	East (X)	North (Y)	Elevation (Z)	Zone
Control Sta. Name				

City, Village or Town Grant
 County of Monroe

COUNTY SURVEYOR FORM NO. 1