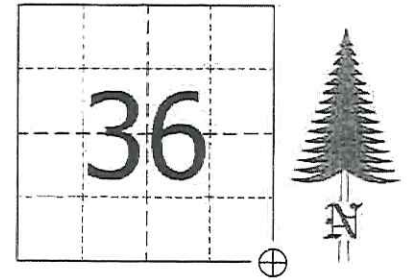


JACKSON COUNTY - U.S. PUBLIC LAND SURVEY MONUMENT RECORD

TYPE OF MONUMENT: 2-3/8" O.D. Aluminum Pipe w/ Aluminum Cap
 REFERENCED FOR SURVEY RECORDED IN CSM# _____ OR CSR# _____
 SURVEYOR'S FILE# OR PROJECT# Fieldbook: T20N-R1W, Pg. 20 - 21
 DRAWN BY: Ethan Remus
 WITNESS: Ethan Remus

CORNER VOL. 3, PAGE 406
 CORNER# 22002360000
 SECTION 36, T 20 N, R 2W # 1
 SE CORNER

GEOGRAPHIC LOCATION: NAD 83 (91) WISCRS- Jackson County
 COUNTY COORDINATE SYSTEM
 (TO BE ASSIGNED BY COUNTY)
 LATT: 44°09'37.21239" N
 LONG: 90°33'12.26938" W
 N = 48251.6534
 E = 164924.0452



LOCATION
 (INDICATE W/ MONUMENT SYMBOL)

BASIS FOR MONUMENT LOCATION:

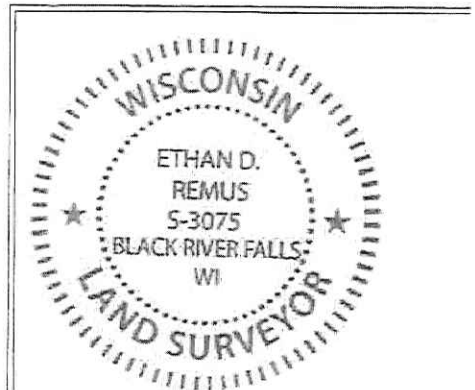
Please describe if this is a found, obliterated or lost corner. Give a complete history of the corner listing the vol & page, dates, surveyor and description of found monument. Please list all parol testimony and who provided it as well as other witness' of recovery. Please describe the best way to reach this corner. Indicate how obstructed this monument might be for GPS observations. Continue on backside if necessary.

* James Freeman set a post for the Township corner as part of the original Township Line survey in 1845. He referenced two bearing trees, a 16" Pine N82°W - 35.64', and a 18" Pine S66°E - 48.84'.

* D.A. Blencoe used this corner during his resurvey of South Millston around 1936. He calls the original corner lost so he reestablished it by double proportion and set a standard capped pipe in a mound of earth with pits N-S-E-W. He also set a 4" oak post on the south side of his pipe. (Blencoe's South Millston Fieldbook on Pg. 73)

* Larry Fedderson visited this corner in 1980. He found Blencoe's mound and pits, but no pipe. He set a 2" capped aluminum pipe in the center of the mound and referenced it to five bearing trees. He set a 7' steel witness sign post 1' North. (See previous tie sheet)

* In December of 2015, I found Fedderson's 2-3/8" O.D. aluminum pipe w/ aluminum cap in excellent condition, up 6" above a large mound of earth with pits plain N-S-E. I believe the West pit was graded out for a logging trail. I found a steel witness sign post 1' North. I found the stumps of Fedderson's bearing trees E-W-S and 5.94' NE. I'm not sure about his Red Pine BT to the NE. I found an 11" Red Pine with a visible nail in a possible blaze, but it measures 38.48' to the corner (record is 38.80'). This tree is also about North of the corner, where Fedderson's sketch shows it being NE. There may be another stump out in the clearcut that was his BT. I accepted Fedderson's pipe as the Township corner. I dug in the existing pits and used the dirt to build up the mound, making the pipe flush. I installed a new witness sign on the existing steel post and drove four rebar for references as depicted below. The corner can be observed directly with GPS. I accessed the corner on ATV, driving a logging trail running NWly through Monroe Co. Forest lands. Access to the trail is about a 1/4 mile south of the County line, running West from Doers Rd or Arm Rd.

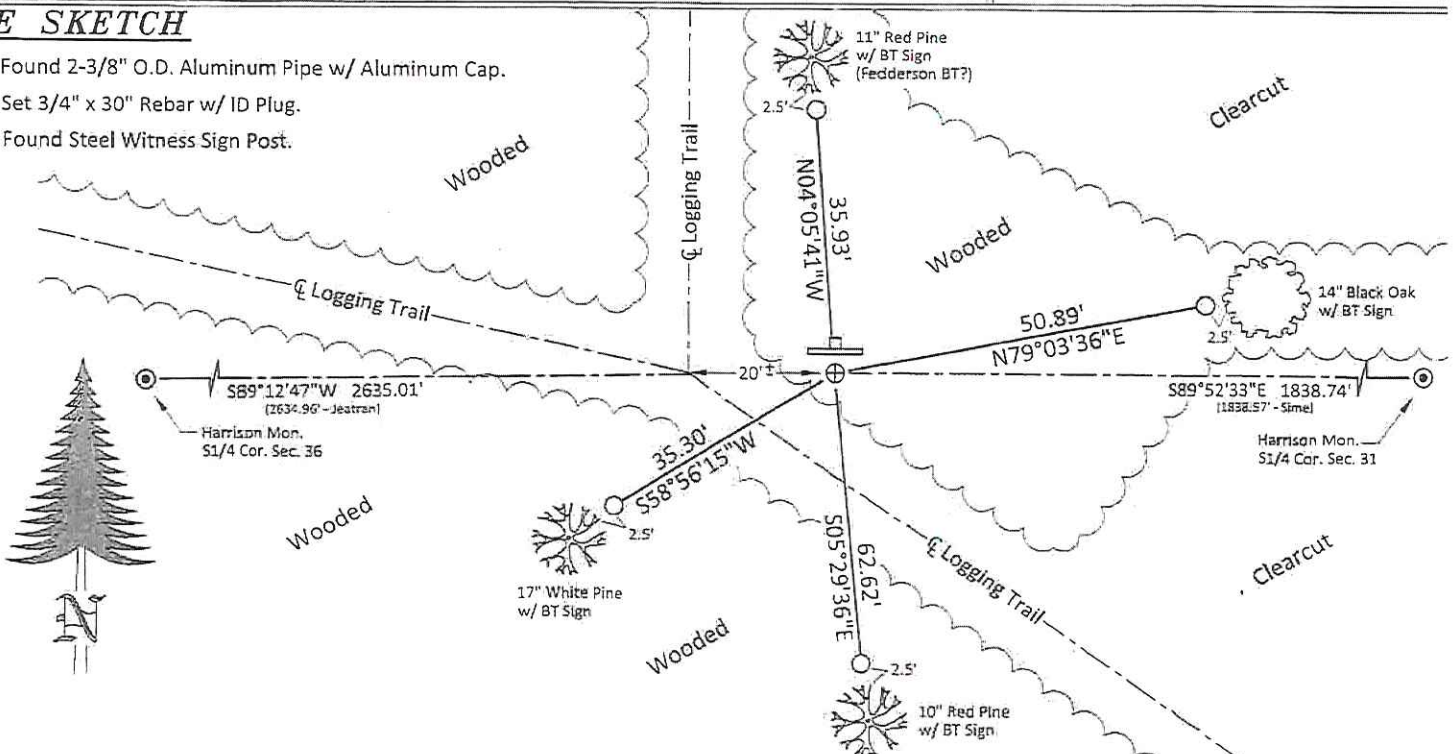


CERTIFIED CORRECT AND COMPLETE
 TO THE BEST OF MY KNOWLEDGE
 AND BELIEF:

Ethan Remus
 Professional Land Surveyor
 DATE: March 22, 2016

TIE SKETCH

- ⊕ = Found 2-3/8" O.D. Aluminum Pipe w/ Aluminum Cap.
- = Set 3/4" x 30" Rebar w/ ID Plug.
- 🌲 = Found Steel Witness Sign Post.



Government Land Corner Certificate

Jackson County Jackson County Monument

TYPE OF MONUMENT: 2" Capped Aluminum Pipe

STATE PLANE COORDINATES: N _____

E _____

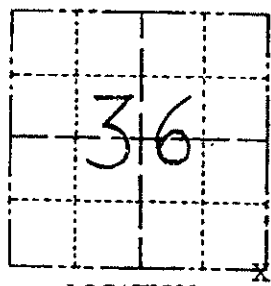
ELEVATION — M.S.L. DATUM: _____

THETA ANGLE: _____

FIELD BOOK: _____ PAGE _____

DRAWN BY: _____

CORNER NO.	Southeast
SECTION	36
TOWN	20 N.
RANGE	2 W.



LOCATION (Indicated by 'X')

BASIS FOR MONUMENT LOCATION

Show info such as: History of corner, with reference to Vol. and pg., dates, surveyor; exact description of monument replaced; if location computed, by taped or EDM traverse; landowner remarks, etc. (Use reverse side if necessary)

This corner was reestablished during the Town of Millston Resettlement Survey during the 1940's.

A mound and four pits were found at this corner, but there was no iron pipe found. By the side of the mound, a sheet metal cap was found. This position agrees with the record distances to the West from the Millston Survey.

SEAL:



DATA SHOWN HERE ON CERTIFIED CORRECT:

Lawrence A. Pedersen
 Registered Land Surveyor

DATE: June 26, 1980

TIE SKETCH

Show at least four ties, also fence lines, roads, topo, size and type of witness trees' and if off road - best way to arrive at corner.

2" Capped Aluminum Pipe Set
 at the SOUTHEAST CORNER OF
 SECTION 36, T20N - R2W in the
 middle of an old mound found.

Sec. 36 T20N-R2W

Nail and Washer in Blaze in 7" Red Oak

Pit=6.8'N.

38.80'

Nail and Washer in Blaze in 4" Red Pine

Sec. 31 T20N-R1W

Witness Sign nailed to Blaze in 9" Red Oak is 5.94' NE. (Bottom Nail)

25.09'

Pit=7.5'E.

Pit=7.0'W.

Nail and Washer in Blaze in 3" Red Pine

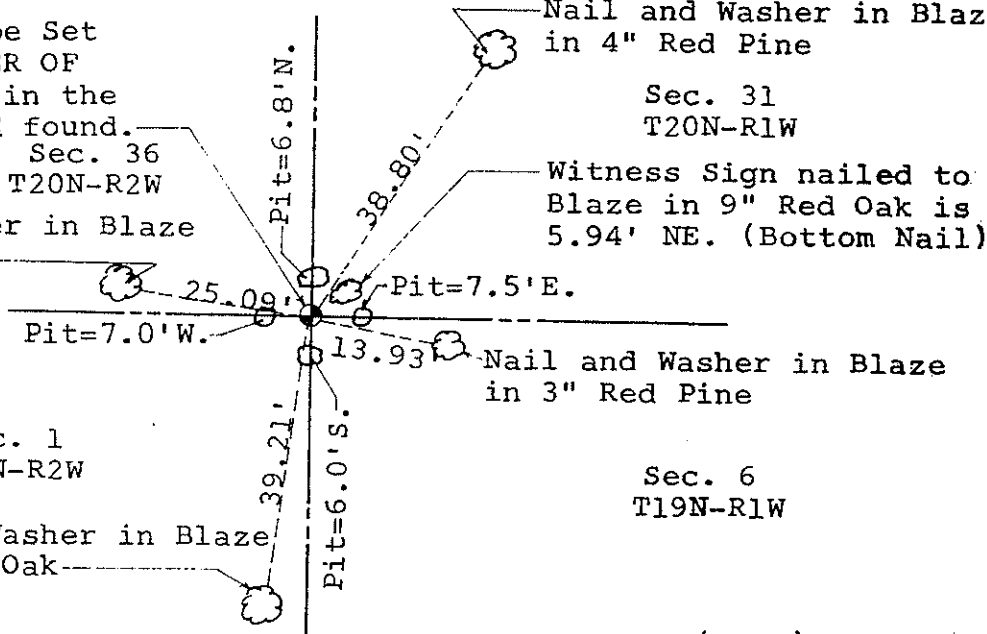
Sec. 1 T19N-R2W

32.21'

Pit=6.0'S.

Sec. 6 T19N-R1W

Nail and Washer in Blaze in 7" Red Oak



Government Land Corner Certificate

2 20 02 36 0000

Jackson County Jackson County Monument

TYPE OF MONUMENT: 2" Capped Aluminum Pipe

CORNER NO. Southeast

SECTION 36

TOWN 20 N.

RANGE 2 W.

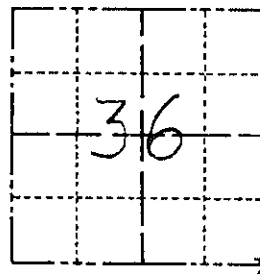
STATE PLANE COORDINATES: N _____
E _____

ELEVATION — M.S.L. DATUM: _____

THETA ANGLE: _____

FIELD BOOK: _____ PAGE _____

DRAWN BY: _____



LOCATION
(Indicated by 'X')

BASIS FOR MONUMENT LOCATION

Show info such as: History of corner, with reference to Vol. and pg., dates, surveyor; exact description of monument replaced; if location computed, by taped or EDM traverse; landowner remarks, etc. (Use reverse side if necessary)

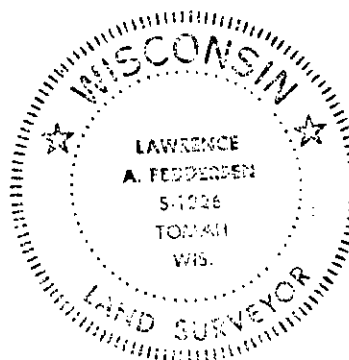
This corner was reestablished during the Town of Millston Resettlement Survey during the 1940's.

A mound and four pits were found at this corner, but there was no iron pipe found. By the side of the mound, a sheet metal cap was found. This position agrees with the record distances to the West from the Millston Survey. Seven foot steel post w/sign 1'

North

To reach this corner take Starlight road to the county line and walk west approximately 1300 feet. The corner is located on a small knoll in between two larger hills.

SEAL:



DATA SHOWN HERE ON
CERTIFIED CORRECT:

Lawrence A. Pedersen
Registered Land Surveyor

DATE: June 26, 1980

TIE SKETCH

Show at least four ties, also fence lines, roads, topo, size and type of witness trees and if off road - best way to arrive at corner.

2" Capped Aluminum Pipe Set at the SOUTHEAST CORNER OF SECTION 36, T20N - R2W in the middle of an old mound found.

Sec. 36
T20N-R2W

Nail and Washer in Blaze in 7" Red Oak

Pit=7.0'W.

Sec. 1
T19N-R2W

Nail and Washer in Blaze in 7" Red Oak

Pit=6.8'N.

38.80'

Pit=7.5'E.

13.93'

Pit=6.0'S.

Nail and Washer in Blaze in 4" Red Pine

Sec. 31
T20N-R1W

Witness Sign nailed to Blaze in 9" Red Oak is 5.94' NE. (Bottom Nail)

Nail and Washer in Blaze in 3" Red Pine

Sec. 6
T19N-R1W

(Over)

To reach this corner take Starlight Rd. to the County Line and walk West approximately 1800 feet. The corner is located on a small knoll in between two larger hills.