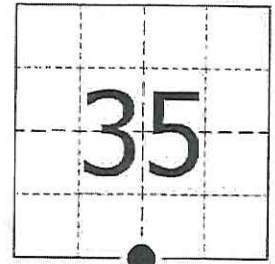


JACKSON COUNTY - U.S. PUBLIC LAND SURVEY MONUMENT RECORD

TYPE OF MONUMENT: 2-3/8" O.D. Iron Pipe w/ Threaded Cap
 REFERENCED FOR SURVEY RECORDED IN CSM# _____ OR CSR# _____
 SURVEYOR'S FILE# OR PROJECT# Fieldbook: T20N-R2W, Pg. 8 - 9
 DRAWN BY: Ethan Remus
 WITNESS: Ethan Remus & Tim Jeatran

CORNER VOL. 15, PAGE 2312
 CORNER# 22002350020
 SECTION 35, T 20 N, R 2W
 S1/4 CORNER # 4

GEOGRAPHIC LOCATION: NAD 83 (91) WISCRS- Jackson County
 COUNTY COORDINATE SYSTEM
 (TO BE ASSIGNED BY COUNTY)
 LATT: 44°09'36.30679" N
 LONG: 90°35'00.62682" W
 N = 48133.4509
 E = 157024.9935



LOCATION
 (INDICATE W/ MONUMENT SYMBOL)

BASIS FOR MONUMENT LOCATION:

Please describe if this is a found, obliterated or lost corner. Give a complete history of the corner listing the vol. & page, dates, surveyor and description of found monument. Please list all parole testimony and who provided it as well as other witness' of recovery. Please describe the best way to reach this corner. Indicate how obstructed this monument might be for GPS observations. Continue on backside if necessary.

- * James Freeman set a post for the quarter corner as part of the original Township Line survey in 1845. He referenced two bearing trees, a 11" White Oak N49°E - 15.18', and a 24" Pine N13°W - 25.74'.
- * D.A. Blencoe used this corner during his resurvey of South Millston around 1936. He notes the original corner as lost. He reestablished it midway on-line between section corners E-W and set a standard capped pipe in a mound of earth with pits E-W. He set an oak post 5" SE of the pipe. He notes the corner is in a cleared field and is 160' West of the centerline of the RR tracks and about 1 rod SW of the West RR fence. (Blencoe's South Millston Fieldbook on Pg. 73)
- * Bill Jung visited this corner in 1982. He found Blencoe's capped pipe in a mound of earth with pits E-W. He accepted Blencoe's pipe as the quarter corner. He dug out the pits E-W and used the dirt to build up the mound. He put a RR spring in each pit and referenced the corner to one bearing tree and a 3/4" x 24" iron bar to the NW. He notes the corner is about 116.2' South of the centerline of the RR tracks. (See previous tie sheet)
- * In December of 2015, I found Blencoe's standard pipe (2-3/8" O.D. iron pipe w/ threaded cap) in excellent condition, up 15" above a mound of earth with pits plain E-W. I found a Monroe Co. witness sign 8" NEly and steel channel posts 1' E-W as guard stakes. I found the stump of Jung's bearing tree to the West. His 3/4" round iron bar to the NW was in good condition. I also found a 3/4" rebar to the East which I believe may have been set recently by Kelly Callaway as a lot corner (survey yet to be filed). I accepted Blencoe's pipe as the quarter corner. I installed a witness sign on the existing steel channel post 1' West and drove two rebar for additional references as depicted below. The corner is open for GPS and can be easily accessed by truck, driving dike roads through Marty Alexander's cranberry marsh.

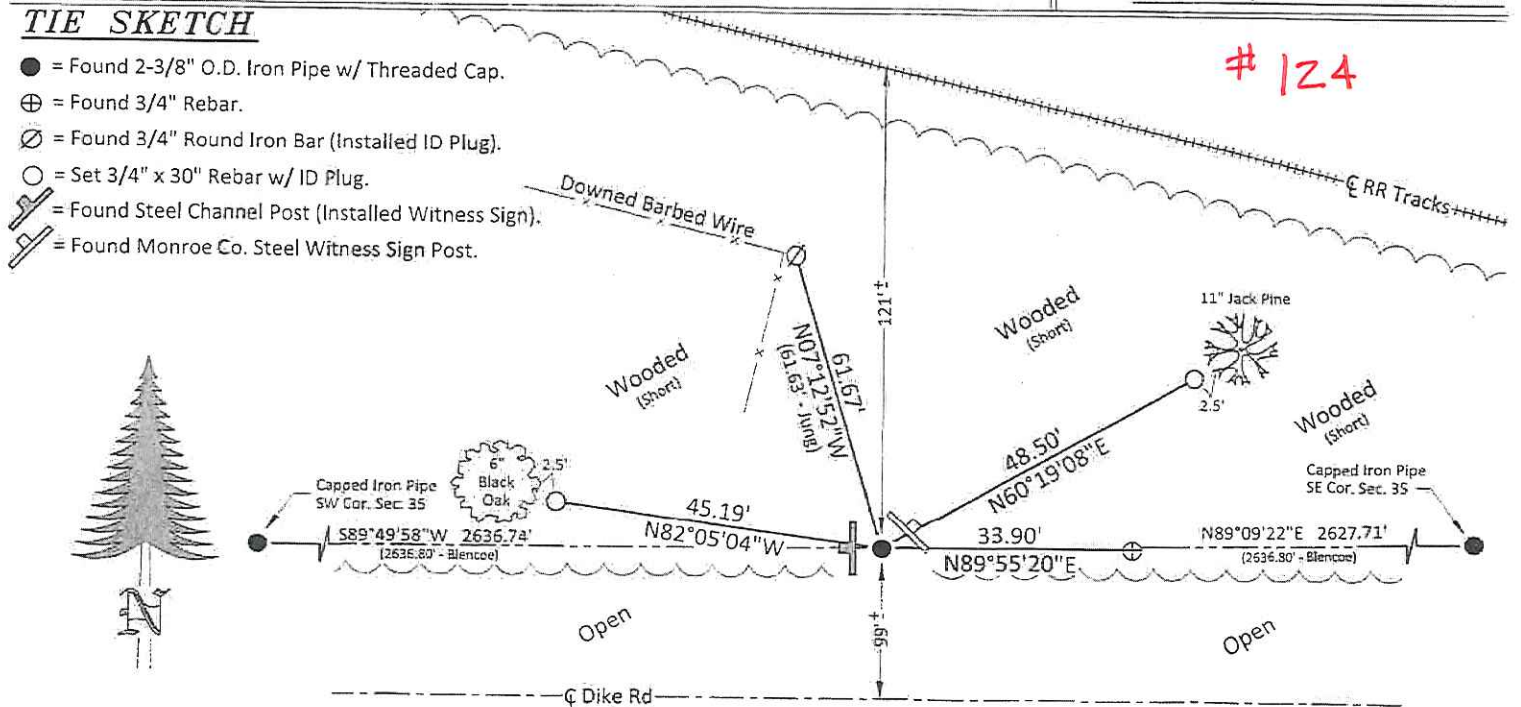


CERTIFIED CORRECT AND COMPLETE
 TO THE BEST OF MY KNOWLEDGE
 AND BELIEF:

Ethan Remus
 Professional Land Surveyor
 DATE: March 24, 2016

TIE SKETCH

- = Found 2-3/8" O.D. Iron Pipe w/ Threaded Cap.
- ⊕ = Found 3/4" Rebar.
- ⊗ = Found 3/4" Round Iron Bar (Installed ID Plug).
- = Set 3/4" x 30" Rebar w/ ID Plug.
- = Found Steel Channel Post (Installed Witness Sign).
- = Found Monroe Co. Steel Witness Sign Post.



I, William C. Jung, do hereby certify that on the 30th day of September 1982, I found (evidence) ~~no evidence~~ of the North 1/4 corner of Section 2, T 19 N, R 2 W Fourth Principal Meridian, and I re-established said corner according to the Wisconsin Statutes as shown and described hereon.

Dated this 17th day of Dec. 1982.

William C. Jung

Deputy County Surveyor

Title

History of corner establishment since Original Government Survey

In about 1936 David Blencoe, from Jackson County, set an iron pipe at this corner. In September of 1971, Duane Marten used this pipe as the corner.

Description of corner evidence found:

I found Blencoe's pipe at the corner.

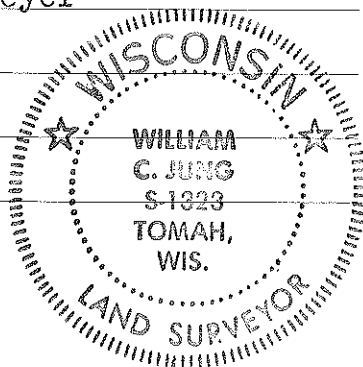
Approved: **HARLEY A. SIME**
MONROE CO. SURVEYOR

Description of corner and witness monuments, references and accessories used to perpetuate the original or re-established location of this corner:

Witnesses to corner location:

William C. Jung

Bryan H. Meyer



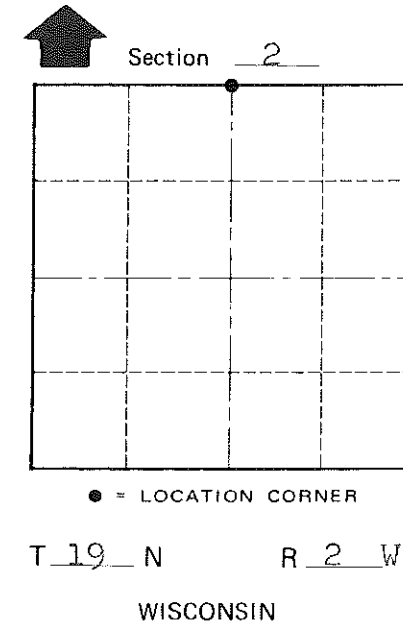
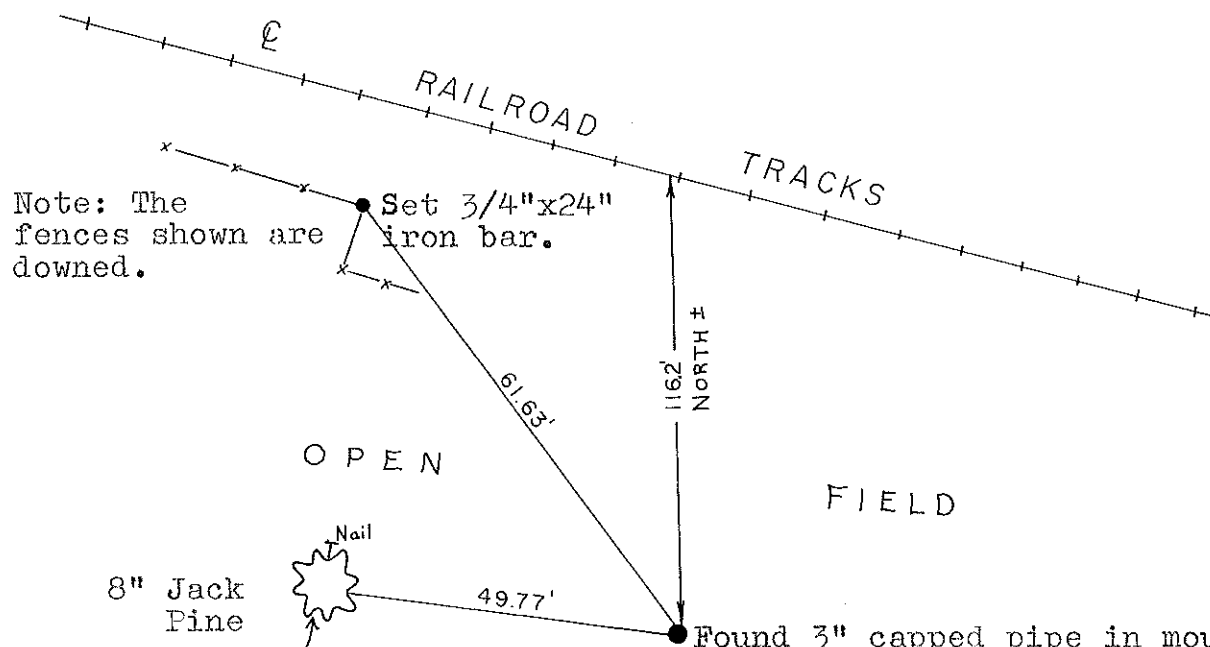
SURVEY CONTROL ORDER

Horizontal	_____
Vertical	_____

The B.T. is single blazed only. Dist. is to nail in hack on the side of the tree.

WISCONSIN COORDINATE SYSTEM

Corner	East (X)	North (Y)	Elevation (Z)	Zone
Control Sta. Name				



City, Village or Town _____ of Grant
County of Monroe

COUNTY SURVEYOR FORM NO. 1