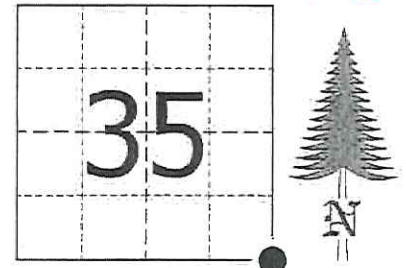


JACKSON COUNTY - U.S. PUBLIC LAND SURVEY MONUMENT RECORD

TYPE OF MONUMENT: 2-3/8" O.D. Iron Pipe w/ Threaded Cap
 REFERENCED FOR SURVEY RECORDED IN CSM# _____ OR CSR# _____
 SURVEYOR'S FILE# OR PROJECT# Fieldbook: T20N-R2W, Pg. 6 - 7
 DRAWN BY: Ethan Remus
 WITNESS: Ethan Remus & Tim Jeatran

CORNER VOL. 15, PAGE 2313
 CORNER# 22002350000
 SECTION 35, T 20 N, R 2W
 SE CORNER

GEOGRAPHIC LOCATION: NAD 83 (91) WISCRS- Jackson County
 COUNTY COORDINATE SYSTEM
 (TO BE ASSIGNED BY COUNTY)
 LATT: 44°09'36.60517" N
 LONG: 90°34'24.58452" W
 N = 48172.1584
 E = 159652.4170



LOCATION
 (INDICATE W/ MONUMENT SYMBOL)

BASIS FOR MONUMENT LOCATION:

Please describe if this is a found, obliterated or lost corner. Give a complete history of the corner listing the vol. & page, dates, surveyor and description of found monument. Please list all parole testimony and who provided it as well as other witness' of recovery. Please describe the best way to reach this corner. Indicate how obstructed this monument might be for GPS observations. Continue on Backside if necessary.

* James Freeman set a post for the section corner as part of the original Township Line survey in 1845. He referenced two bearing trees, a 12" Pine N41°30'E - 21.12', and a 10" Pine N38°W - 31.68'.

* C.M. Keach set a stake at this corner in 1921. He notes there was a very old, blazed pine tree about 3 rods West of the Corner. (CSR No. 950 in Vol. 3 on Pg. 194)

* D.A. Blencoe used this corner during his resurvey of South Millston around 1936. He records finding the stumps of both Gov't bearing trees along with Keach's stake point. He set a standard capped pipe in a mound with pits N-S-E-W. He set a 3" oak post about 2" West of the corner pipe. (Blencoe's South Millston Fieldbook on Pg. 73)

* Bill Jung visited this corner in 1982. He found Blencoe's capped pipe up 2' in a mound of earth with four pits. He also found possible stump remains from both Gov't BT's. He accepted Blencoe's pipe as the section corner and referenced it to four new bearing trees. (See previous tie sheet)

* In December of 2015, I found Blencoe's standard pipe (2-3/8" O.D. iron pipe w/ threaded cap) in excellent condition, up 23" above a mound of earth with pits plain N-S-E-W. I found a Monroe Co. witness sign 1' South and a steel channel post 1' East as a guard stake. I found Jung's bearing trees as depicted below. I accepted Blencoe's pipe as the section corner, installed a witness sign on the existing channel post 1' East and drove four rebar for references as depicted below. I observed the corner directly with GPS and accessed it by driving through Marty Alexander's cranberry marsh. There is a trail running alongside the interstate, which takes you within 80' of the corner.



CERTIFIED CORRECT AND COMPLETE
 TO THE BEST OF MY KNOWLEDGE
 AND BELIEF:

Ethan Remus

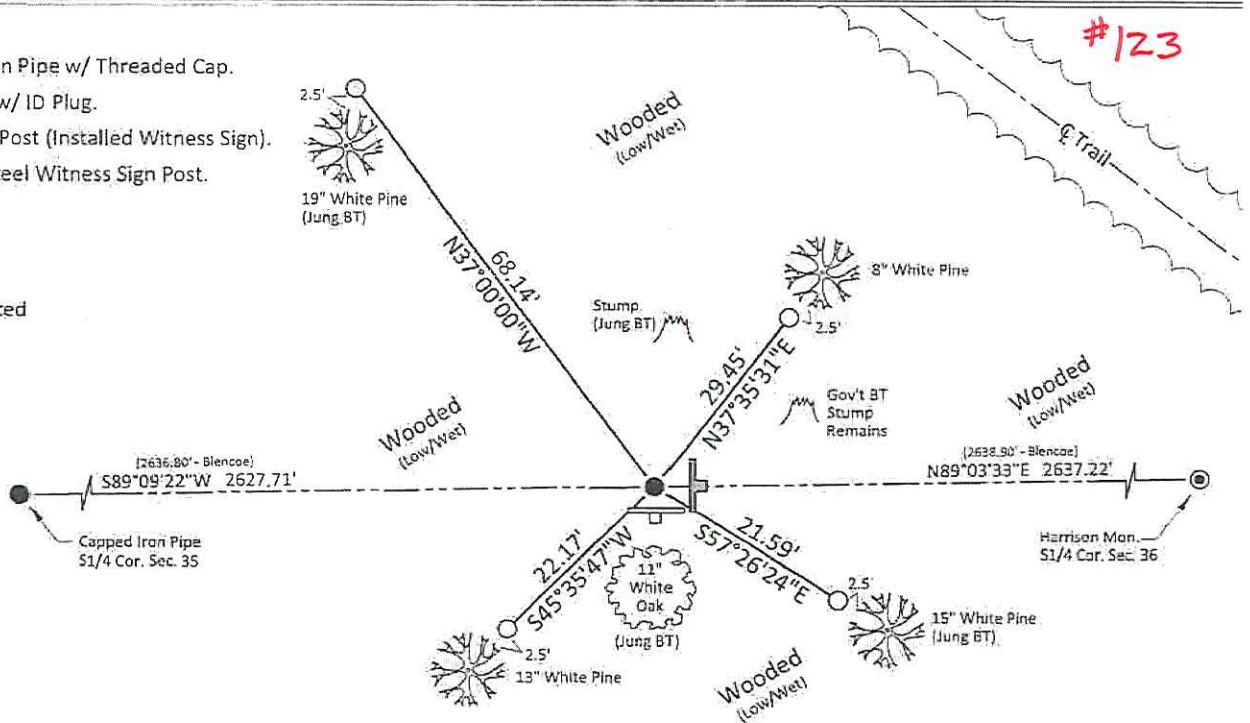
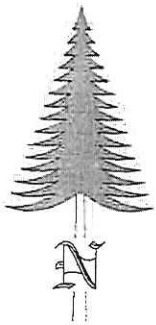
Professional Land Surveyor

DATE: March 23, 2016

TIE SKETCH

- = Found 2-3/8" O.D. Iron Pipe w/ Threaded Cap.
- = Set 3/4" x 30" Rebar w/ ID Plug.
- ⌵ = Found Steel Channel Post (Installed Witness Sign).
- ⌵ = Found Monroe Co. Steel Witness Sign Post.

*Bearings are referenced to magnetic North.



I, William C. Jung, do hereby certify that on the 2nd day of October 1982, I found (evidence) ~~(no evidence)~~ of the Northeast corner of Section 2, T 19 N, R 2 W Fourth Principal Meridian, and I re-established said corner according to the Wisconsin Statutes as shown and described hereon.

Dated this 17th day of Dec. 1982.

William C. Jung
Deputy County Surveyor
Title

History of corner establishment since Original Government Survey

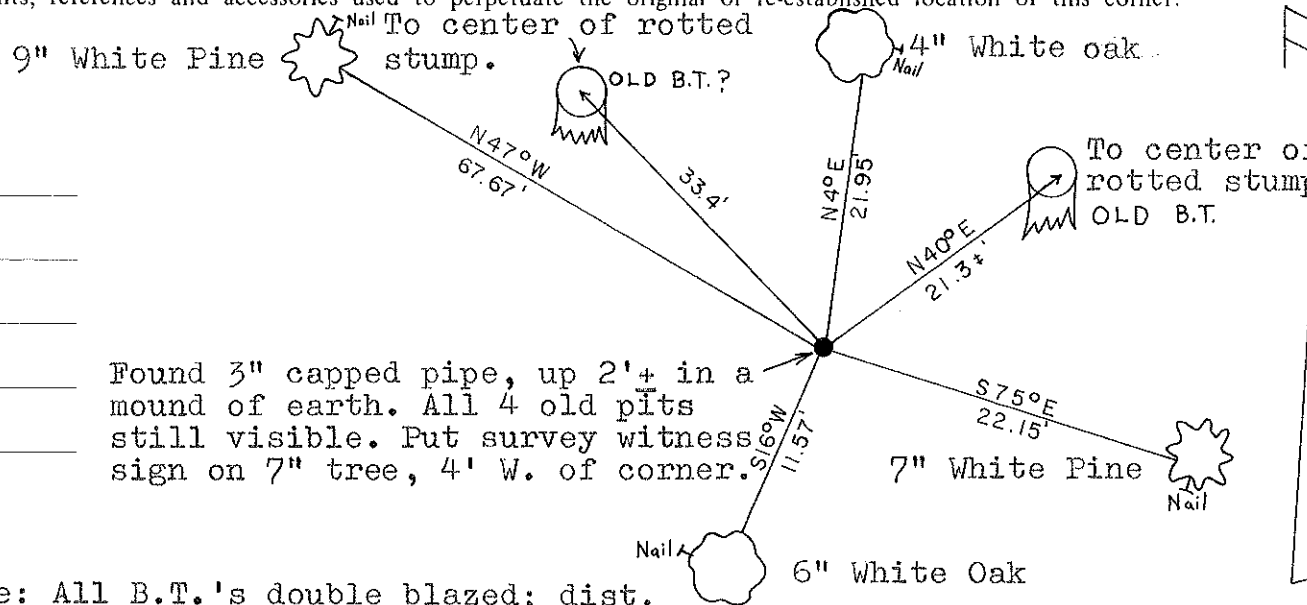
In January of 1921, Blencoe was at this corner. Blencoe set an iron pipe at this corner in about 1936. Heidecke used this pipe as the corner when he surveyed out Section 1 in 1980.

Description of corner evidence found:

I found Blencoe's pipe at the corner.

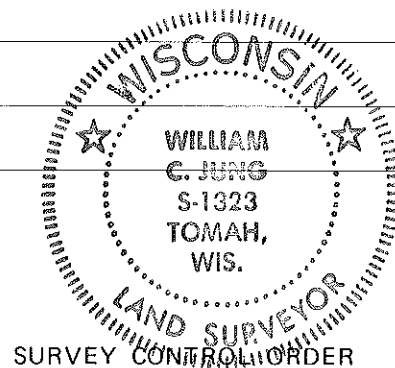
Approved: **HARLEY A. SIME**
MONROE CO. SURVEYOR

Description of corner and witness monuments, references and accessories used to perpetuate the original or re-established location of this corner:

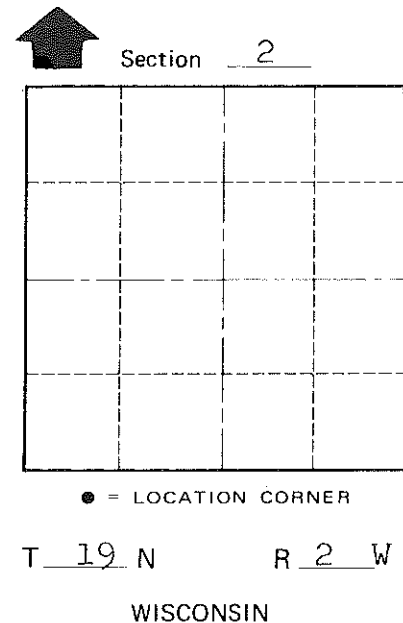


Witnesses to corner location:

William C. Jung
Bryan H. Meyer



Note: All B.T.'s double blazed; dist. to a nail in a hack on the side of the tree.



Horizontal	_____
Vertical	_____

WISCONSIN COORDINATE SYSTEM

Corner	East (X)	North (Y)	Elevation (Z)	Zone
Control Sta. Name				

~~City/Village of~~ Town of Grant
County of Monroe

COUNTY SURVEYOR FORM NO. 1