

JACKSON COUNTY - U.S. PUBLIC LAND SURVEY MONUMENT RECORD

TYPE OF MONUMENT: 2-3/8" O.D. Iron Pipe w/ Threaded Cap
 REFERENCED FOR SURVEY RECORDED IN CSM# _____ OR CSR# _____
 SURVEYOR'S FILE# OR PROJECT# Fieldbook: T20N-R2W, Pg. 12 - 13
 DRAWN BY: Ethan Remus
 WITNESS: Ethan Remus & Tim Jeatran

CORNER VOL. 15, PAGE 2310
 CORNER# 22002340020
 SECTION 34, T 20 N, R 2W
 S1/4 CORNER # 6

GEOGRAPHIC LOCATION: NAD 83 (91) WISCRS- Jackson County
 COUNTY COORDINATE SYSTEM
 (TO BE ASSIGNED BY COUNTY)
 LATT: 44°09'36.03100" N
 LONG: 90°36'12.93680" W
 N = 48089.4502
 E = 151753.5987



LOCATION
 (INDICATE W/ MONUMENT SYMBOL)

BASIS FOR MONUMENT LOCATION:

Please describe if this is a found, obliterated or lost corner. Give a complete history of the corner listing the vol. & page, dates, surveyor and description of found monument. Please list all parole testimony and who provided it as well as other witness of recovery. Please describe the best way to reach this corner. Indicate how obstructed this monument might be for GPS observations. Continue on backside if necessary.

* James Freeman set a post for the quarter corner as part of the original Township Line survey in 1845. He referenced two bearing trees, a 26" Pine N31°W - 35.64', and a 24" Pine N67°E - 13.86'.

* D.A. Blencoe used this corner during his resurvey of South Millston around 1936. He records finding the burned stumps of both Gov't bearing trees and the stake point of the Gov't post. He set a standard capped pipe in a mound of earth with pits E-W. He set an oak post 3" South of his pipe and referenced a new bearing tree, a 12" Norway Pine N5°E - 13.5', marked '1/4' on upper blaze. (Blencoe's South Millston Fieldbook on Pg. 73)

* Bill Jung visited this corner in 1982. He found Blencoe's capped pipe up 35" in a mound of earth with pits E-W. He also found Blencoe's bearing tree and the burnt stump of the NE Gov't bearing tree. He accepted Blencoe's pipe as the quarter corner and referenced it to three new bearing trees. (See previous tie sheet)

* In December of 2015, I found Blencoe's standard pipe (2-3/8" O.D. iron pipe w/ threaded cap) leaning North slightly, up 36" above a large mound of earth with large pits plain E-W. I found a Monroe Co. witness sign 8" North. I found all of Jung's bearing trees alive, but nails were grown over. Blencoe's BT is still alive and the burnt stump remains of the NE Gov't BT are still plain. I accepted Blencoe's pipe as the quarter corner, plumbed it and drove a 7" steel witness sign post 1' South. I drove four rebar for references as depicted below. Direct GPS observations on this corner are possible under ideal conditions. I accessed this corner on foot, walking West from the SE corner of Section 34.



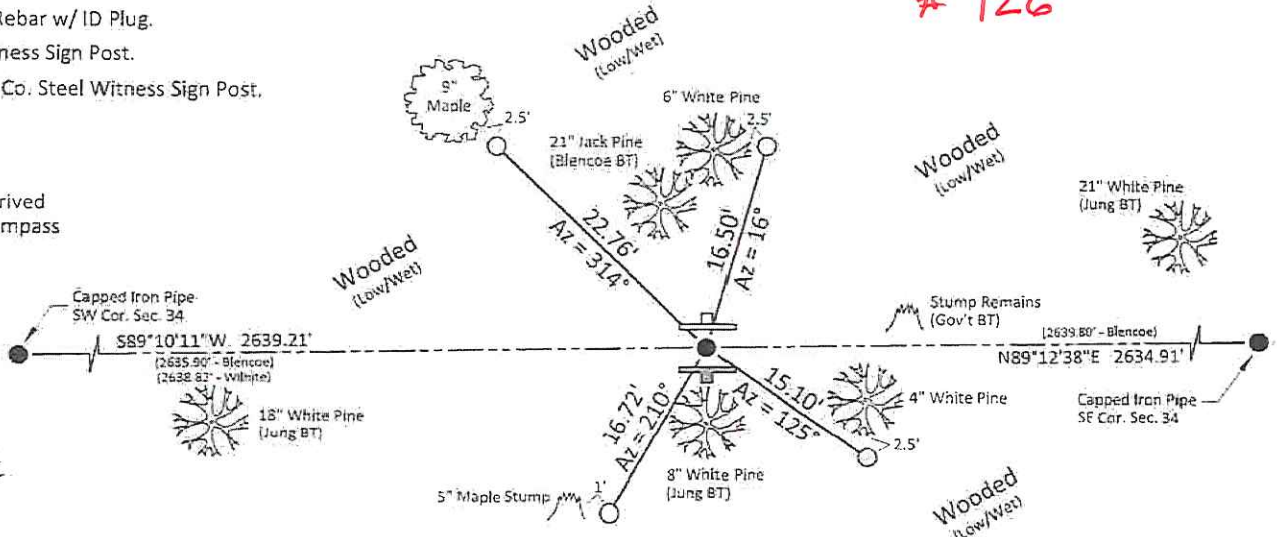
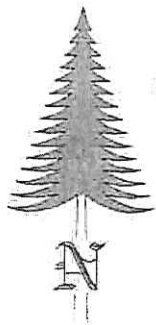
CERTIFIED CORRECT AND COMPLETE
 TO THE BEST OF MY KNOWLEDGE
 AND BELIEF:

Ethan Remus
 Professional Land Surveyor
 DATE: March 24, 2016

TIE SKETCH

- = Found 2-3/8" O.D. Iron Pipe w/ Threaded Cap.
- = Set 3/4" x 30" Rebar w/ ID Plug.
- ⚡ = Set 7' Steel Witness Sign Post.
- ⚡ = Found Monroe Co. Steel Witness Sign Post.

*Azimuths are derived from magnetic compass readings.



I, William C. Jung, do hereby certify that on the 17th day of December 1982, I found (evidence) ~~(no evidence)~~ of the North 1/4 corner of Section 3, T19 N, R2 W Fourth Principal Meridian, and I re-established said corner according to the Wisconsin Statutes as shown and described hereon.

Dated this 25th day of Jan. 1983.

William C. Jung

Deputy County Surveyor
Title

History of corner establishment since Original Government Survey

David Blencoe, from Jackson County, set an iron pipe at this corner in about 1936. Feddersen's map, dated March, 1980, shows a capped pipe at this corner.

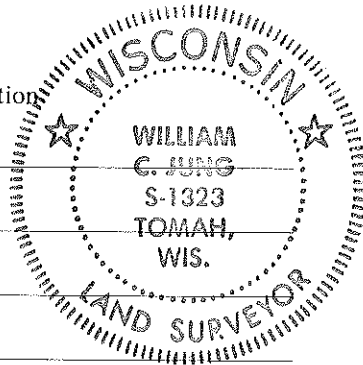
Description of corner evidence found:

I found a 2 1/4" pipe with a 3" cap at the corner.

Description of corner and witness monuments, references and accessories used to perpetuate the original or re-established location of this corner:

Witnesses to corner location

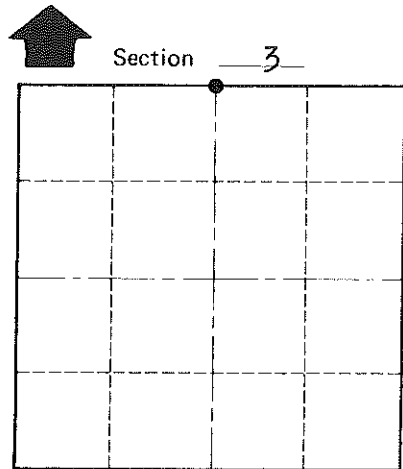
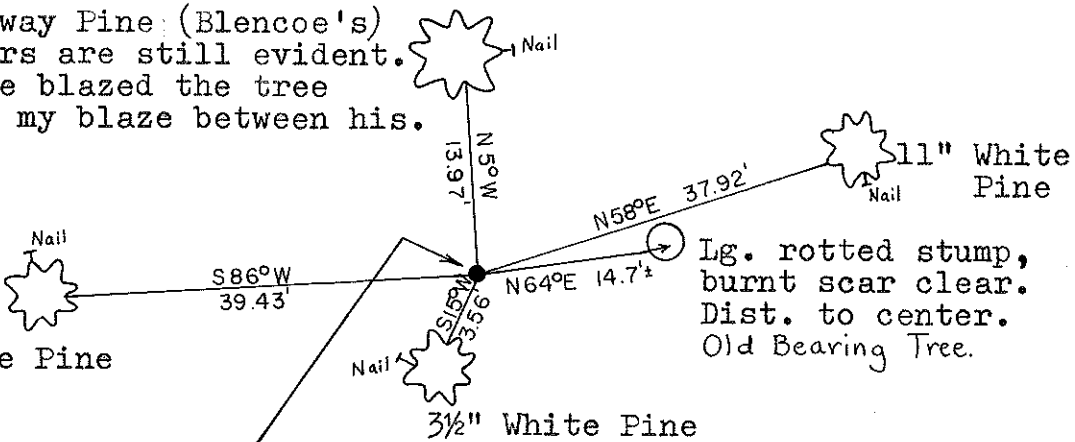
William Jung



17" Norway Pine (Blencoe's) (2) scars are still evident. I single blazed the tree putting my blaze between his.

8" White Pine

Found a 2 1/4" I.P. with a 3" cap, up 35" in a mound. Both pits E. and W. were filled with water



● = LOCATION CORNER

T 19 N R 2 W

WISCONSIN

Approved: **HARLEY A. SIME**
MONROE CO. SURVEYOR

SURVEY CONTROL ORDER

Horizontal	_____
Vertical	_____

WISCONSIN COORDINATE SYSTEM

Corner	East (X)	North (Y)	Elevation (Z)	Zone
Control Sta. Name				

All distances are to nails in hacks on the side of each tree Each B.T. is double blazed.

~~City, Village or~~ Town of Grant
County of Monroe

COUNTY SURVEYOR FORM NO. 1