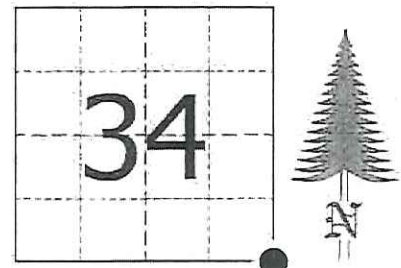


JACKSON COUNTY - U.S. PUBLIC LAND SURVEY MONUMENT RECORD

TYPE OF MONUMENT: 2-3/8" O.D. Iron Pipe w/ Threaded Cap
 REFERENCED FOR SURVEY RECORDED IN CSM# _____ OR CSR# _____
 SURVEYOR'S FILE# OR PROJECT# Fieldbook: T20N-R2W, Pg. 10 - 11
 DRAWN BY: Ethan Remus
 WITNESS: Ethan Remus & Tim Jeatran

CORNER VOL. 15, PAGE 2311
 CORNER# 22002340000
 SECTION 34, T 20 N, R 2W
 SE CORNER # 5

GEOGRAPHIC LOCATION: NAD 83 (91) WISCRS- Jackson County
 COUNTY COORDINATE SYSTEM
 (TO BE ASSIGNED BY COUNTY)
 LATT: 44°09'36.31182" N
 LONG: 90°35'36.79544" W
 N = 48125.7603
 E = 154388.2600



LOCATION
 (INDICATE W/ MONUMENT-SYMBOL)

BASIS FOR MONUMENT LOCATION:

Please describe if this is a found, obliterated or lost corner. Give a complete history of the corner listing the vol. & page, dates, surveyor and description of found monument. Please list all parole testimony and who provided it as well as other witness of recovery. Please describe the best way to reach this corner. Indicate how obstructed this monument might be for GPS observations. Continue on backside if necessary.

* James Freeman set a post for the section corner as part of the original Township Line survey in 1845. He referenced two bearing trees, a 20" Pine N21°W - 29.70', and a 48" Double Pine N33°E - 23.10'.

* D.A. Blencoe used this corner during his resurvey of South Millston around 1936. He records finding the stumps of both Gov't bearing trees and a 39" long pipe at the corner set by some unknown surveyor. He replaced the unrecorded pipe with a standard capped pipe in a mound of earth with pits N-S-E-W. He set a 6" oak post 2' East of his pipe. (Blencoe's South Millston Fieldbook on Pg. 73)

* Bill Jung visited this corner in 1979. He found Blencoe's capped pipe up 2' in a mound of earth with pits N-E. He accepted Blencoe's pipe as the section corner and referenced it to three bearing trees. He also shows a fence line running South from the corner. (See previous tie sheet)

* In December of 2015, I found Blencoe's standard pipe (2-3/8" O.D. iron pipe w/ threaded cap) in excellent condition, up 24" above a mound of earth with pits plain N-S-E-W. I found a Monroe Co. witness sign 6" NEly. I found the stumps of Jung's three bearing trees along with downed barbed wire running South from the corner. I also found a 2-3/8" O.D. x about 8' iron pipe lying flat on the West side of Blencoe's pipe. I accepted Blencoe's pipe as the section corner and drove a 7' steel witness sign post 1' West. I drove four rebar for references as depicted below. The corner is open for GPS. The corner is about 400' West of USH '12'. I accessed it on foot from the SE. It is a short walk from a cabin there.



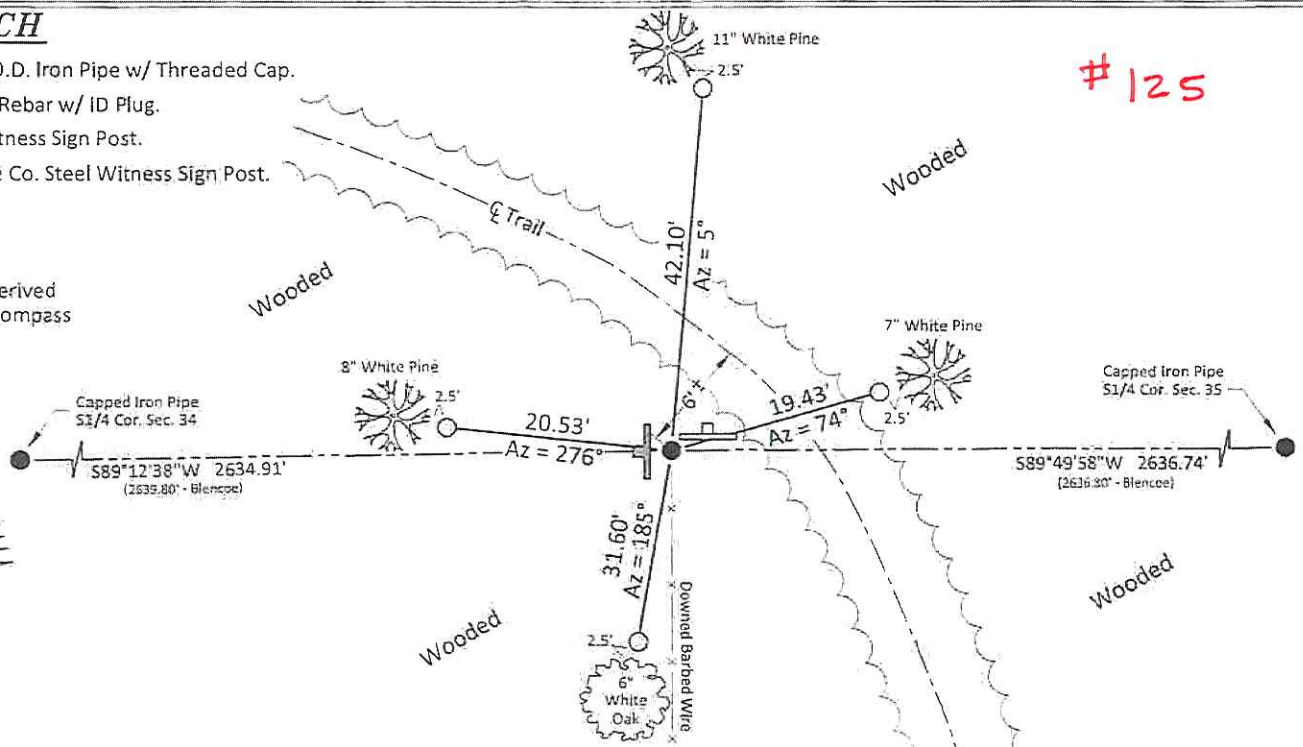
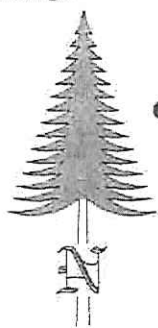
CERTIFIED CORRECT AND COMPLETE
 TO THE BEST OF MY KNOWLEDGE
 AND BELIEF:

Ethan Remus
 Professional Land Surveyor
 DATE: March 24, 2016

TIE SKETCH

- = Found 2-3/8" O.D. Iron Pipe w/ Threaded Cap.
- = Set 3/4" x 30" Rebar w/ ID Plug.
- ⊥ = Set 7' Steel Witness Sign Post.
- ⊥ = Found Monroe Co. Steel Witness Sign Post.

*Azimuths are derived from magnetic compass readings.



125

I, William C. Jung, do hereby certify that on the 29th day of November 1979, I found (evidence) ~~(no evidence)~~ of the NW corner of Section 2, T 19 N, R 2 W Fourth Principal Meridian, and I re-established said corner according to the Wisconsin Statutes as shown and described hereon.

History of corner establishment since Original Government Survey

David Blencoe set an iron pipe at this corner, probably in the 1930's. Duane Marten used this pipe in a survey of September, 1971.

Description of corner evidence found:

Found the corner of record.

Dated this 28th day of Jan. 1980.

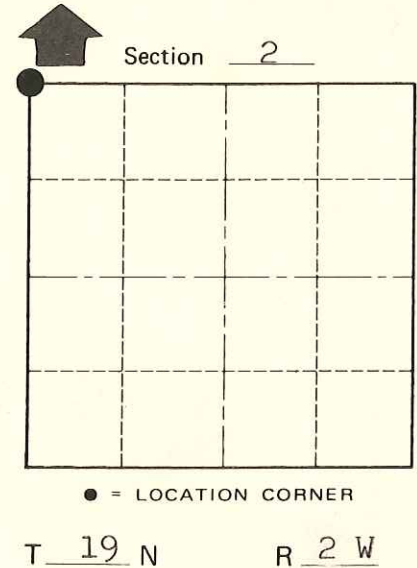
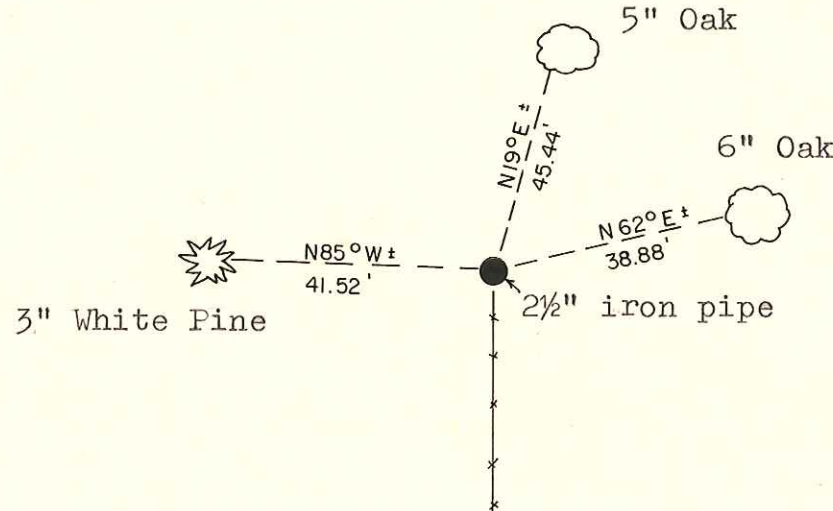
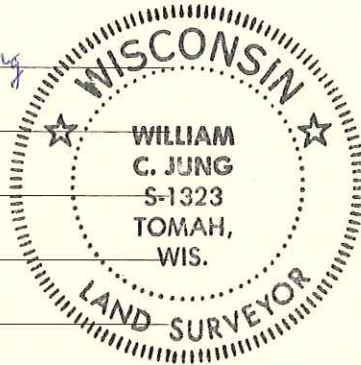
William C. Jung, R.L.S. 1321
Crew Chief, County Surveyor's
 Title Office

Approved: HARLEY A. SIME
MONROE CO. SURVEYOR

Description of corner and witness monuments, references and accessories used to perpetuate the original or re-established location of this corner:
 Found 2½" iron pipe up 2' with old pits 8' N. and 8' E.

Witnesses to corner location:

W. Jung *William C. Jung*
R. Hayden
G. Dechant



● = LOCATION CORNER

T 19 N R 2 W

WISCONSIN

Approved by: Harley A. Sime
 County Surveyor

(All trees double blazed with N&C's set)

SURVEY CONTROL ORDER

Horizontal	_____
Vertical	_____

WISCONSIN COORDINATE SYSTEM

Corner	East (X)	North (Y)	Elevation (Z)	Zone
Control Sta. Name				

City, Village or Town Grant

County of Monroe

COUNTY SURVEYOR FORM NO. 1