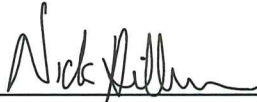


## CERTIFICATE

I, Nicholas M. Hillmer, do hereby certify that this document and the data contained herein was prepared by me or under my direct supervision and that I am a duly Licensed Land Surveyor under the laws of the State of Wisconsin.

Dated this 21st day of May, 2013



Nicholas M. Hillmer, P.L.S. 2909  
Anderson Engineering of Minnesota, LLC.

## CERTIFIED LAND CORNER

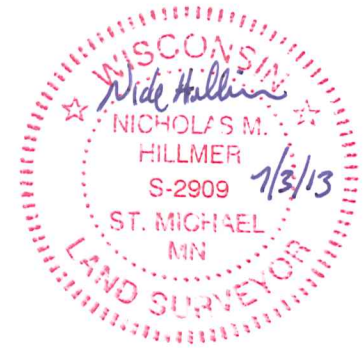
### History of corner established since Original Government Survey

Fred Holden was at this corner is October of 1901. In 1936 David Blencoe found a buggy axle at the corner and set an iron pipe over the buggy axle. The 1940's McCoy boundary notes show a corner at this location. In September of 1982 William Jung found a capped pipe and accepted it as the corner. Jung also found a McCoy monument as a witness marker.

### Description of evidence found

On November 27th, 2012, Anderson Engineering of Minnesota located Blencoe's 2 1/2 inch pipe with stamped cap 2.0 feet above grade and 0.5 feet southwest of a witness post with survey marker sign. Also found was the McCoy monument, a 4 inch U.S. Army Corps of Engineers survey control mark disk set in concrete is 0.48 feet southwest of the pipe.

No. 22002330000



Description of corner and witness monuments, references and accessories used to perpetuate the original or re-established location of this corner:

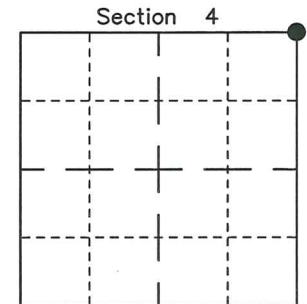
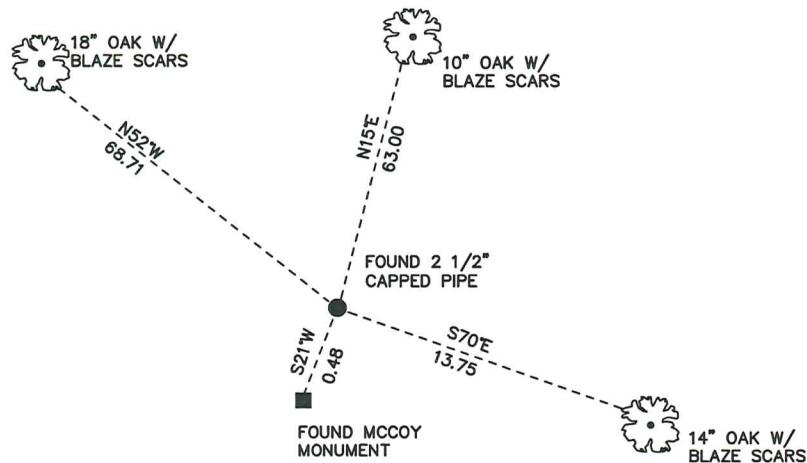
Witnesses to corner location:

Josh Oslund  
Dan Greenwald

MONROE COUNTY  
COORDINATE SYSTEM  
NAD 1983 (2007)

2 1/2 INCH CAPPED PIPE  
Northing (Y) 458288.90  
Easting (X) 678353.17

Base Station - 22 182W  
Northing (Y) 408053.25  
Easting (X) 679287.00



● = LOCATION CORNER  
Corner I.D. NE 4  
T 19 N R 2 W  
Town of Grant  
Monroe County, WI.

All distances are shown in U.S. Survey Feet.  
Ties are to 60D nails set in trees.  
Bearings are for tie reference purposes only.  
Coordinates were derived from RTK GNSS procedures.

CERTIFICATE

CERTIFIED LAND CORNER

No. 7

**22002330000**

I, William C. Jung, do hereby certify that on the 28<sup>th</sup> day of September 1982, I found (evidence) ~~re-established~~ of the Northeast corner of Section 4, T 19 N, R 2 W Fourth Principal Meridian, and I re-established said corner according to the Wisconsin Statutes as shown and described hereon.

Dated this 17<sup>th</sup> day of Dec. 1982.

William C. Jung  
Deputy County Surveyor

Title

History of corner establishment since Original Government Survey

Holden was at this corner in October of 1901. In about 1936, David Blencoe, from Jackson County, found a buggy axle at the corner which was set by Fred Holden. Blencoe set an iron pipe over the buggy axle. The McCoy boundary notes show an iron pipe in a mound of earth.

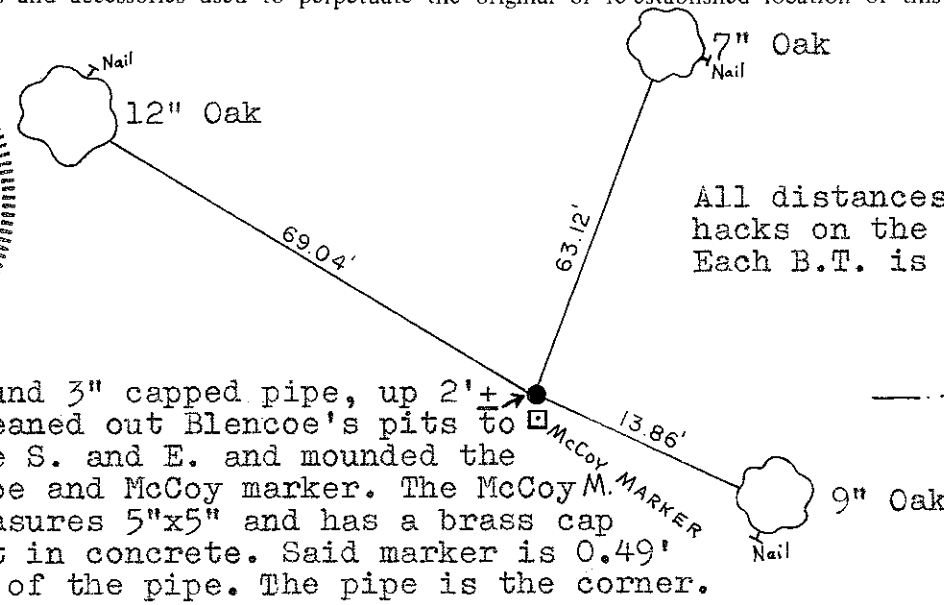
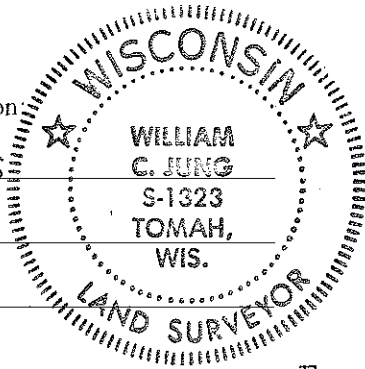
Description of corner evidence found:

I found a capped pipe at the corner. The existing McCoy marker (0.49' South of the pipe) is a witness marker.

Description of corner and witness monuments, references and accessories used to perpetuate the original or re-established location of this corner:

Witnesses to corner location:

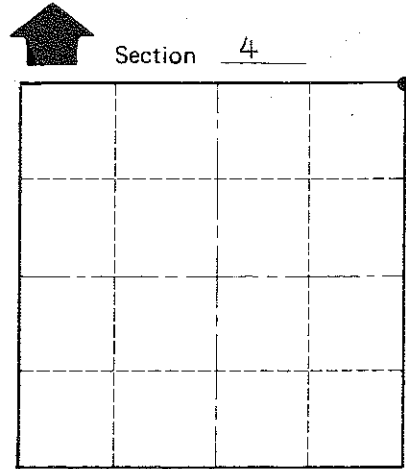
William C. Jung  
Bryan H. Meyer



All distances are to nails in hacks on the sides of the trees  
Each B.T. is double blazed.

Found 3" capped pipe, up 2'± to the S. and E. and mounded the pipe and McCoy marker. The McCoy M. measures 5"x5" and has a brass cap set in concrete. Said marker is 0.49' S. of the pipe. The pipe is the corner.

TRAIL



● = LOCATION CORNER

T 19 N R 2 W  
WISCONSIN

COUNTY SURVEYOR FORM NO. 1

Approved: **HARLEY A. SIME**  
**MONROE CO. SURVEYOR**

SURVEY CONTROL ORDER

Horizontal	_____
Vertical	_____

WISCONSIN COORDINATE SYSTEM

Corner	East (X)	North (Y)	Elevation (Z)	Zone
Control Sta. Name				

~~City Village of~~ Town of Grant  
County of Monroe