

CERTIFICATE

I, Nicholas M. Hillmer, do hereby certify that this document and the data contained herein was prepared by me or under my direct supervision and that I am a duly Licensed Land Surveyor under the laws of the State of Wisconsin.

Dated this 21st day of May, 2013



Nicholas M. Hillmer, P.L.S. 2909
Anderson Engineering of Minnesota, LLC.

CERTIFIED LAND CORNER

History of corner established since Original Government Survey

In October of 1901, Fred Holden shows a stake at this corner. In 1936 David Blencoe found and accepted Keach's stone as the corner and set an iron pipe. Blencoe's states his corner is 12 feet west and 74.8 feet south of Holden's. The 1940's McCoy boundary notes show a corner at this location. In December of 1982 William Jung found and accepted Blencoe's pipe as the corner.

Description of evidence found

On November 27th, 2012, Anderson Engineering of Minnesota located Blencoe's 2 1/2 inch pipe with a 3 inch cap in a mound on the north side of a fire trail that runs east-west. Also located during the search was a McCoy monument, a 4 inch U.S. Army Corps of engineers survey control mark disk set in concrete 61.48 feet northeast of the Blencoe's pipe. Previous records indicate a discrepancy and confusion over the boundary. Blencoe's pipe is accepted as the corner. The McCoy monument is a witness marker.

No. 22002320020



Description of corner and witness monuments, references and accessories used to perpetuate the original or re-established location of this corner:

Witnesses to corner location:

Josh Oslund
Dan Greenwald

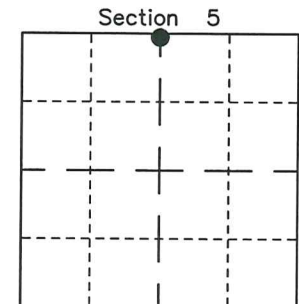
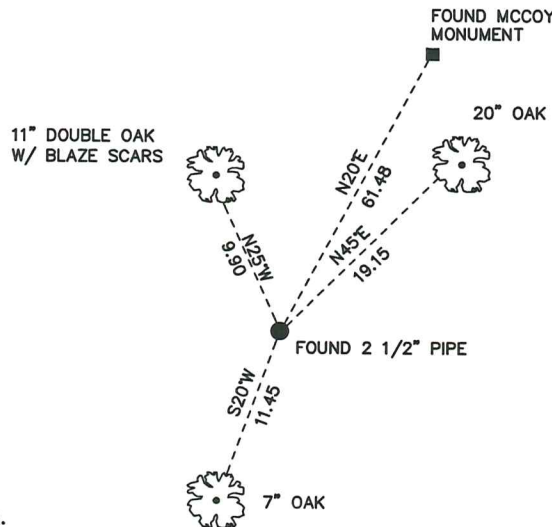
MONROE COUNTY
COORDINATE SYSTEM
NAD 1983 (2007)

2 1/2 INCH PIPE
Northing (Y) 458181.10
Easting (X) 670457.08

Base Station - 22 182W
Northing (Y) 408053.25
Easting (X) 679287.00



All distances are shown in U.S. Survey Feet.
Ties are to 60D nails set in trees.
Bearings are for tie reference purposes only.
Coordinates were derived from RTK GNSS procedures.



● = LOCATION CORNER
Corner I.D. N 1/4 5
T 19 N R 2 W
Town of Grant
Monroe County, WI.

22002320020

I, William C. Jung, do hereby certify that on the 17th day of December 1982, I found (evidence) ~~no evidence~~ of the North 1/4 corner of Section 5, T19 N, R 2 W Fourth Principal Meridian, and I re-established said corner according to the Wisconsin Statutes as shown and described hereon.

Dated this 26th day of Jan. 1983.

William C. Jung

Deputy County Surveyor
Title

History of corner establishment since Original Government Survey
 In October of 1901, Holden shows a stake at this corner. In about 1936, David Blencoe, from Jackson County, found Keach's stone. He accepted this stone as the corner and set an iron pipe. Blencoe said his corner was 12' West and 74.8' South of Holden's. According to the McCoy boundary notes, a McCoy boundary marker was set at the corner.

Description of corner evidence found:

There was obviously some confusion and disagreement over this corner. Blencoe, Holden, and the McCoy surveyors all disagreed on this corner. Based upon my experience, I would tend to accept Blencoe's corner, especially since in this case he also agrees with Keach. I found Blencoe's pipe at the corner.

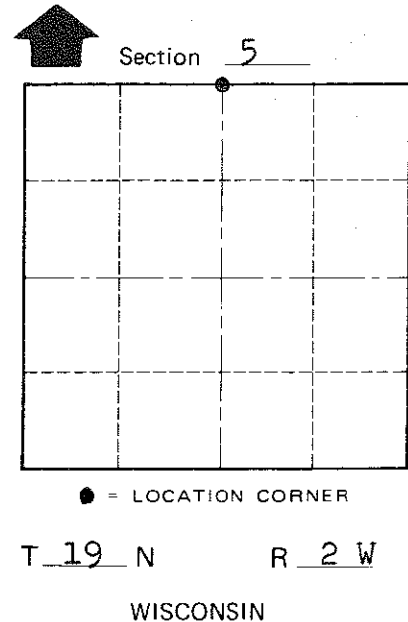
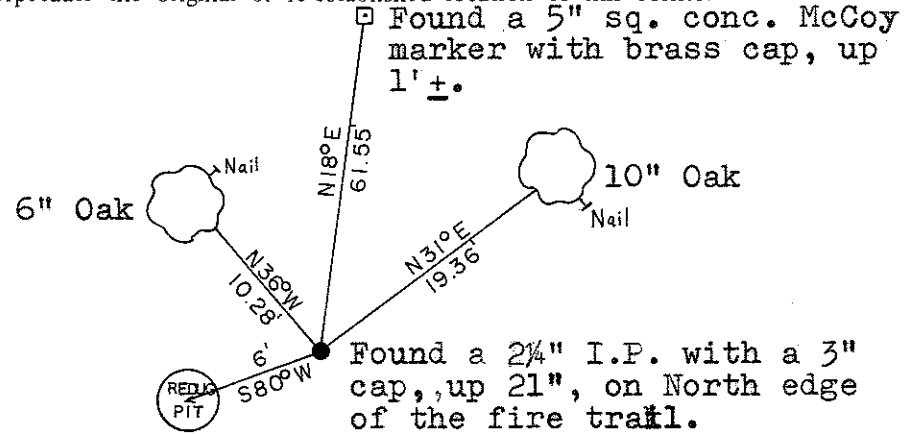
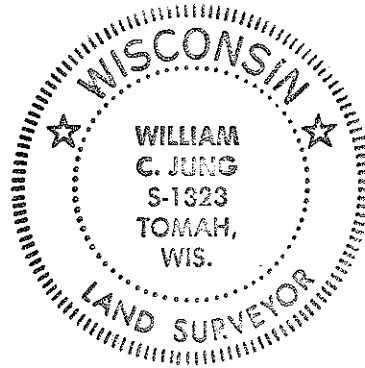
Additional tie: N9°W, 86.4' from the pipe is an unblazed 7" white oak.
 Distance is to center of tree.

COUNTY SURVEYOR FORM NO. 1

Description of corner and witness monuments, references and accessories used to perpetuate the original or re-established location of this corner:

Witnesses to corner location:

Jung



Approved: **HARLEY A. SIME**
MONROE CO. SURVEYOR

Both B.T.'s double blazed with each distance to a nail in a hack on the side of the tree.

SURVEY CONTROL ORDER

| | |
|------------|-------|
| Horizontal | _____ |
| Vertical | _____ |

WISCONSIN COORDINATE SYSTEM

| Corner | East (X) | North (Y) | Elevation (Z) | Zone |
|-------------------|----------|-----------|---------------|------|
| Control Sta. Name | | | | |

~~City, Village or~~ Town of Grant
 County of Monroe