

CERTIFICATE

I, Nicholas M. Hillmer, do hereby certify that this document and the data contained herein was prepared by me or under my direct supervision and that I am a duly Licensed Land Surveyor under the laws of the State of Wisconsin.

Dated this 21st day of May, 2013



Nicholas M. Hillmer, P.L.S. 2909
Anderson Engineering of Minnesota, LLC.

CERTIFIED LAND CORNER

History of corner established since Original Government Survey

In October of 1901, Fred Holden's notes show a "X S" on a natural stone ledge. In 1936 David Blencoe found and accepted Holden's corner. Blencoe set a pipe at the location. The 1940's McCoy boundary notes show a corner at this location. In December of 1982 William Jung found and accepted Blencoe's pipe at the corner.

Description of evidence found

On November 27th, 2012, Anderson Engineering of Minnesota located Blencoe's 2 1/2 inch pipe with a 3 inch cap 4.2 feet above grade. The pipe reads "Camp McCoy Boundary" on the east side. The monument is on the west side of a ridge in a mound. A pit was found 5 feet south of the 2 1/2 inch pipe.

No. 22002320000



Description of corner and witness monuments, references and accessories used to perpetuate the original or re-established location of this corner:

Witnesses to corner location:

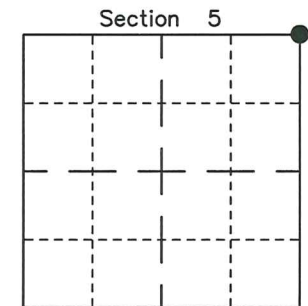
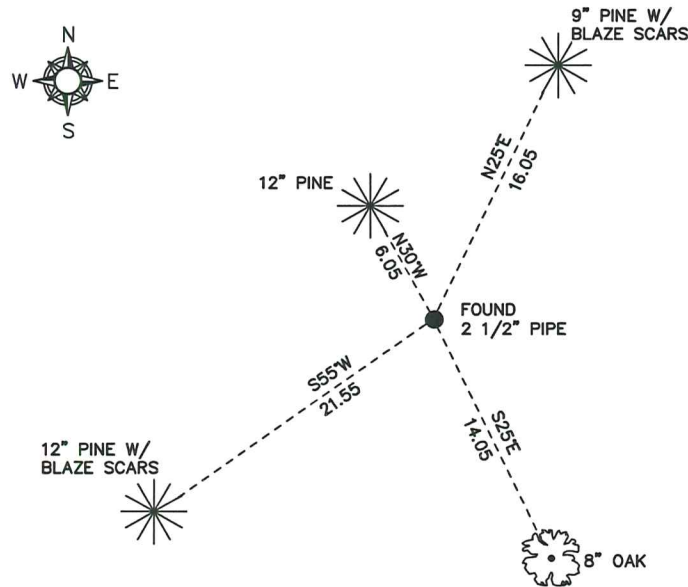
Josh Oslund
Dan Greenwald

MONROE COUNTY
COORDINATE SYSTEM
NAD 1983 (2007)

2 1/2 INCH PIPE
Northing (Y) 458303.67
Easting (X) 673090.71

Base Station - 22 182W
Northing (Y) 408053.25
Easting (X) 679287.00

All distances are shown in U.S. Survey Feet.
Ties are to 60D nails set in trees.
Bearings are for tie reference purposes only.
Coordinates were derived from RTK GNSS procedures.



● = LOCATION CORNER
Corner I.D. NE 5
T 19 N R 2 W
Town of Grant
Monroe County, WI.

22002320000

I, William C. Jung do hereby certify that on the 17th day of December 1982, I found (evidence) ~~XXXXXXXXXX~~ of the Northwest corner of Section 4, T 19 N, R 2 W Fourth Principal Meridian, and I re-established said corner according to the Wisconsin Statutes as shown and described hereon.

History of corner establishment since Original Government Survey

In October of 1901, Holden's notes show a "X S" on a natural stone ledge. In about 1936, David Blencoe, from Jackson County, found Holden's corner. He accepted this corner and set an iron pipe. The McCoy boundary notes show that this iron pipe was found and used as the corner.

Description of corner evidence found:

I found Blencoe's pipe at the corner.

Dated this 27th day of Jan. 1983.

William C. Jung

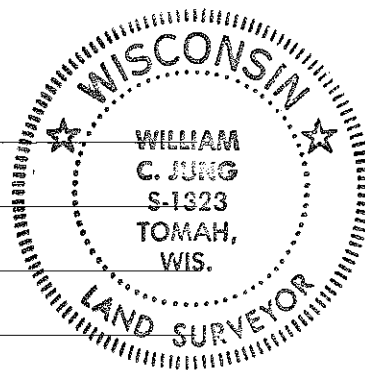
Deputy County Surveyor
Title

COUNTY SURVEYOR FORM NO. 1

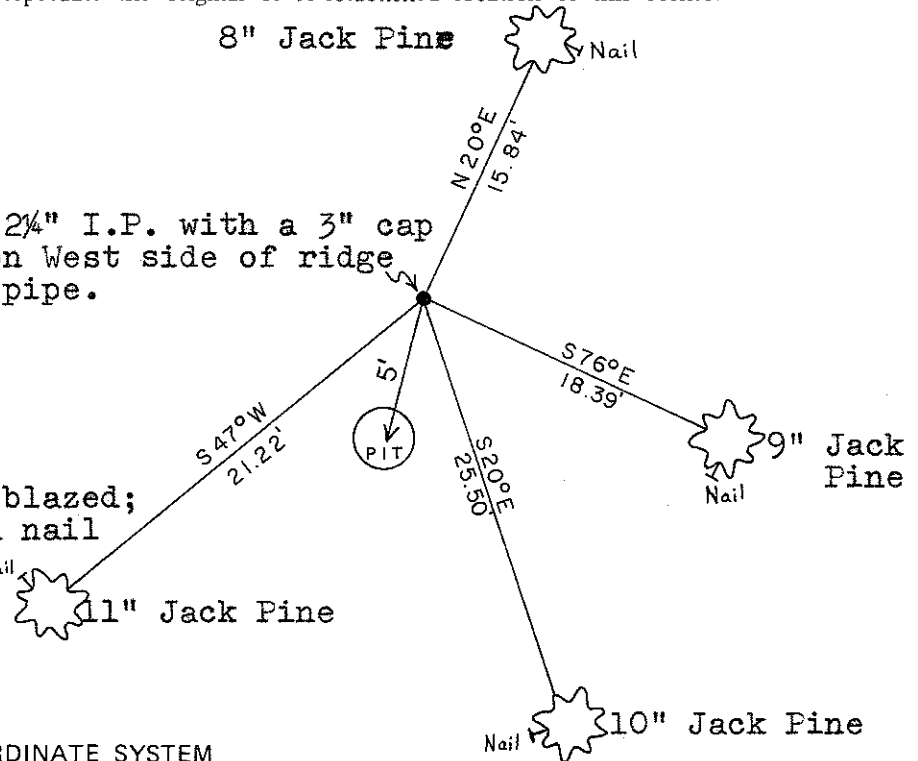
Description of corner and witness monuments, references and accessories used to perpetuate the original or re-established location of this corner:

Witnesses to corner location:

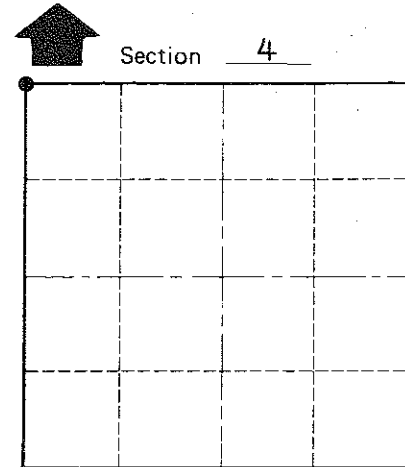
Jung



Found a 2 1/4" I.P. with a 3" cap up 4', on West side of ridge Mounded pipe.



All B.T.'s double blazed; each distance to a nail in a hack on the ^{Nail} side of the tree.



• = LOCATION CORNER

T 19 N R 2 W

WISCONSIN

Approved: **HARLEY A. SIME**
MONROE CO. SURVEYOR

SURVEY CONTROL ORDER

Horizontal	_____
Vertical	_____

WISCONSIN COORDINATE SYSTEM

Corner	East (X)	North (Y)	Elevation (Z)	Zone
Control Sta. Name				

~~City, Village or~~ Town of Grant

County of Monroe