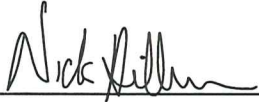


CERTIFICATE

I, Nicholas M. Hillmer, do hereby certify that this document and the data contained herein was prepared by me or under my direct supervision and that I am a duly Licensed Land Surveyor under the laws of the State of Wisconsin.

Dated this 21st day of May, 2013



Nicholas M. Hillmer, P.L.S. 2909
Anderson Engineering of Minnesota, LLC.

CERTIFIED LAND CORNER

History of corner established since Original Government Survey

In 1936 David Blencoe re-established this corner and set an iron pipe. The 1940's McCoy boundary notes show a corner at this location. In December of 1982, William Jung found and accepted Blencoe's pipe at the corner. Jung also found a McCoy monument 4 inches south of the pipe as a witness corner.

Description of evidence found

On November 28th, 2012, Anderson Engineering of Minnesota located Blencoe's 2 1/2 inch pipe with a 3 inch cap 2.1 feet above grade, and the McCoy monument, a 4 inch U.S. Army Corps of Engineers survey control mark disk set in concrete 0.37 feet south of the pipe. Both monuments are in a mound. Pits were found on the east and west side of the mound.

No. 22002310020



Description of corner and witness monuments, references and accessories used to perpetuate the original or re-established location of this corner:

Witnesses to corner location:

Dan Greenwald
Josh Oslund

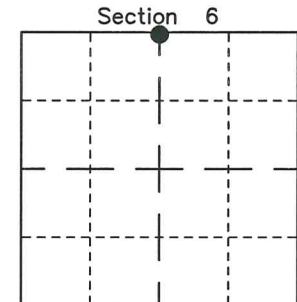
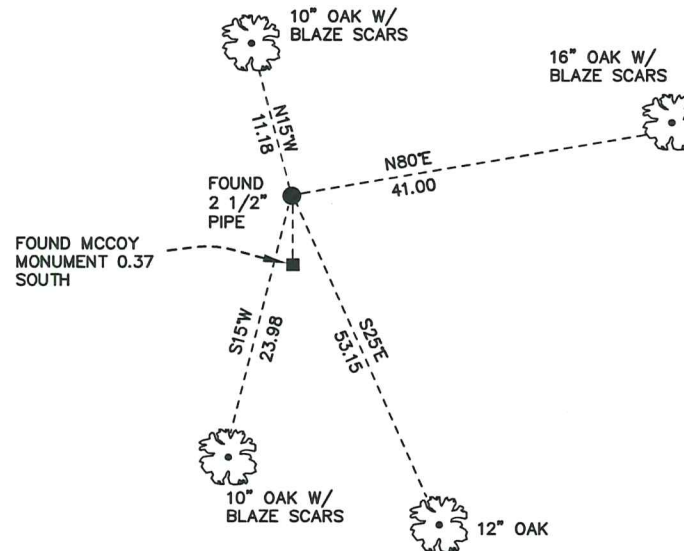


MONROE COUNTY
COORDINATE SYSTEM
NAD 1983 (2007)

2 1/2 INCH PIPE
Northing (Y) 458166.41
Easting (X) 665251.46

Base Station - 22 182W
Northing (Y) 408053.25
Easting (X) 679287.00

All distances are shown in U.S. Survey Feet.
Ties are to 60D nails set in trees.
Bearings are for tie reference purposes only.
Coordinates were derived from RTK GNSS procedures.



● = LOCATION CORNER
 Corner I.D. N 1/4 6
T 19 N R 2 W
 Town of Grant
 Monroe County, WI.

22002310020

I, William C. Jung, do hereby certify that on the 16th day of December 1982, I found (evidence) ~~no evidence~~ of the North 1/4 corner of Section 6, T 19 N, R 2W Fourth Principal Meridian, and I re-established said corner according to the Wisconsin Statutes as shown and described hereon.

Dated this 27th day of Jan. 1983.

William C. Jung

Deputy County Surveyor
Title

History of corner establishment since Original Government Survey

In about 1936, David Blencoe, from Jackson County, re-established this corner and set an iron pipe. The McCoy boundary notes show that this iron pipe was found and used as the corner.

Description of corner evidence found:

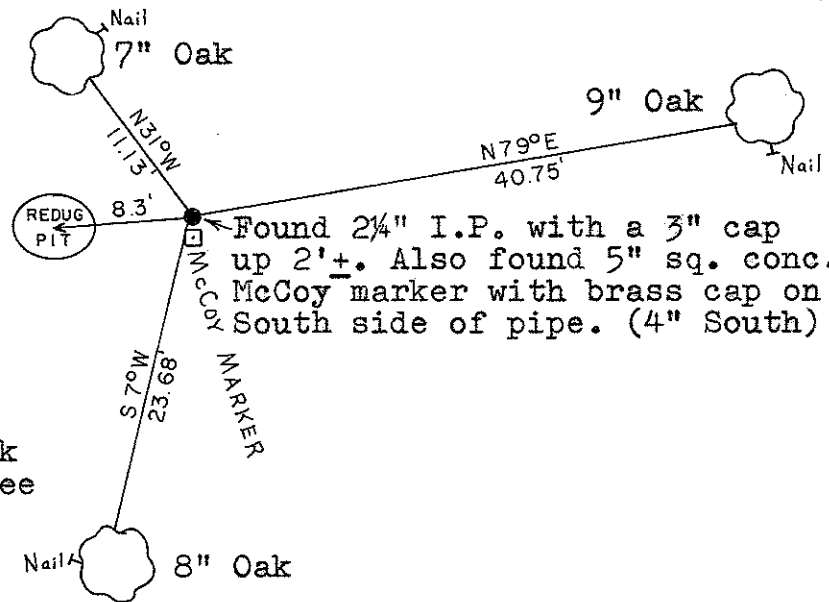
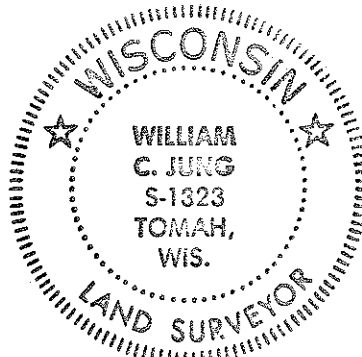
I found Blencoe's pipe at the corner. The McCoy marker 4" to the South of the pipe is a witness corner.

COUNTY SURVEYOR FORM NO. 1

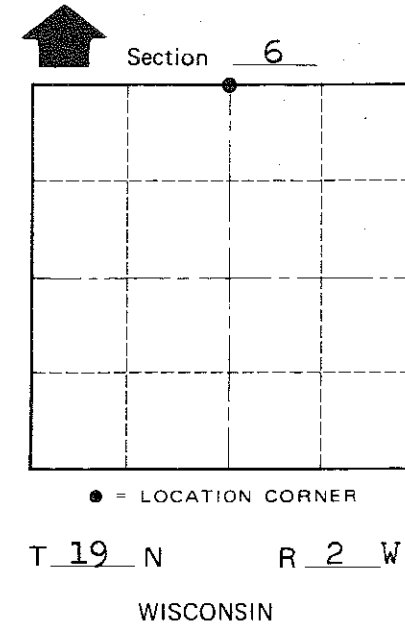
Description of corner and witness monuments, references and accessories used to perpetuate the original or re-established location of this corner:

Witnesses to corner location:

William C. Jung



All B.T.'s are double blazed; each distance is to a nail in a hack on the side of the tree



Approved: **HARLEY A. SIME**
MONROE CO. SURVEYOR

SURVEY CONTROL ORDER

Horizontal	_____
Vertical	_____

WISCONSIN COORDINATE SYSTEM

Corner	East (X)	North (Y)	Elevation (Z)	Zone
Control Sta. Name				

~~City, Village or~~ Town of Grant
County of Monroe