

CERTIFICATE

I, Nicholas M. Hillmer, do hereby certify that this document and the data contained herein was prepared by me or under my direct supervision and that I am a duly Licensed Land Surveyor under the laws of the State of Wisconsin.

Dated this 21st day of May, 2013



Nicholas M. Hillmer, P.L.S. 2909
Anderson Engineering of Minnesota, LLC.

CERTIFIED LAND CORNER

History of corner established since Original Government Survey

Fred Holden was at this corner in October of 1901. The 1940's McCoy boundary notes show a corner at this location. In March of 1980 Feddersen shows a sleigh bar at this corner. In September of 1980 Hiedecke's map shows a sleigh bar. In September of 1982 William Jung found the sleigh bar and replaced it with a Harrison monument. Jung also found a McCoy marker as a witness marker.

Description of evidence found

On November 27th, 2012, Anderson Engineering of Minnesota located the Harrison monument flush with the ground and 0.89 feet south of the McCoy monument, a 4 inch U.S. Army Corps of Engineers survey control mark disk set in concrete. A witness post with a survey marker sign was found 0.65 feet east of the Harrison monument.

No. 21902042000



Description of corner and witness monuments, references and accessories used to perpetuate the original or re-established location of this corner:

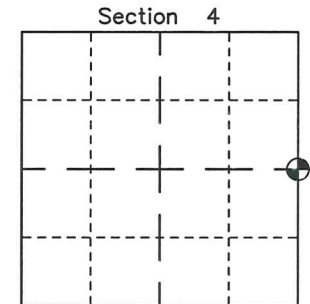
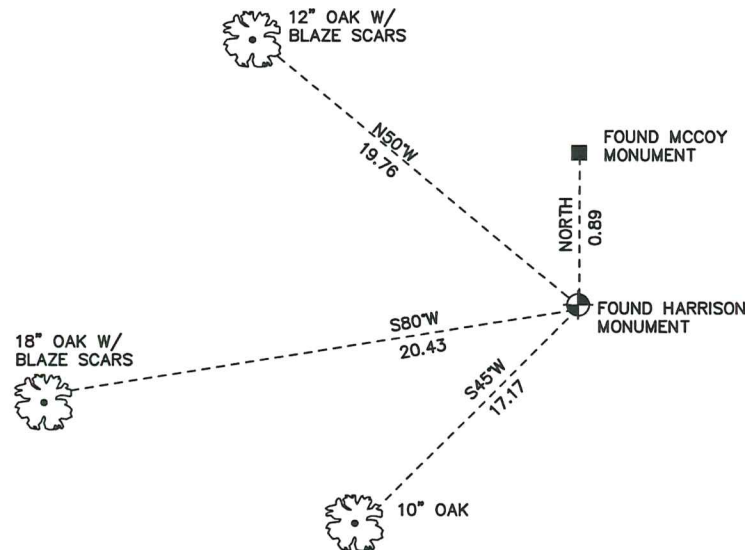
Witnesses to corner location:

Dan Greenwald
Josh Oslund

MONROE COUNTY
COORDINATE SYSTEM
NAD 1983 (2007)

HARRISON MONUMENT
Northing (Y) 455291.29
Easting (X) 678319.35

Base Station - 22 182W
Northing (Y) 408053.25
Easting (X) 679287.00



⊕ = LOCATION CORNER
Corner I.D. E 1/4 4
T 19 N R 2 W
Town of Grant
Monroe County, WI.

All distances are shown in U.S. Survey Feet.
Ties are to 60D nails set in trees.
Bearings are for tie reference purposes only.
Coordinates were derived from RTK GNSS procedures.

21902042000

I, William C. Jung, do hereby certify that on the 30th day of September 19 82, I found (evidence) ~~██████████~~ of the West 1/4 corner of Section 3, T 19 N, R 2 W Fourth Principal Meridian, and I re-established said corner according to the Wisconsin Statutes as shown and described hereon.

Dated this 17th day of Dec. 19 82.

William C. Jung
Deputy County Surveyor
Title

History of corner establishment since Original Government Survey

Holden was at this corner in October of 1901. According to the McCoy boundary notes, a monument was either found or set at this corner. Feddersen's map, dated March, 1980, and Heidecke's dated September, 1980, both show an existing sleigh bar at this corner.

Description of corner evidence found:

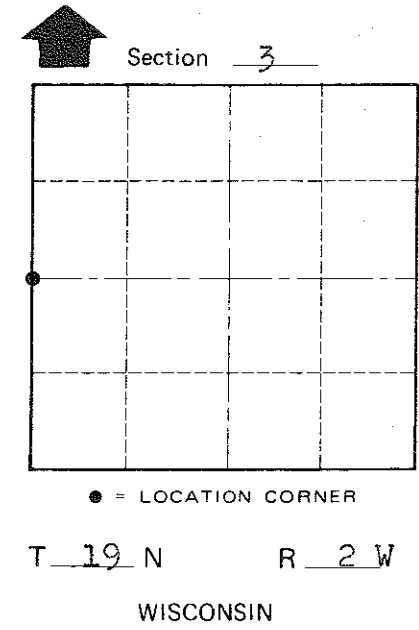
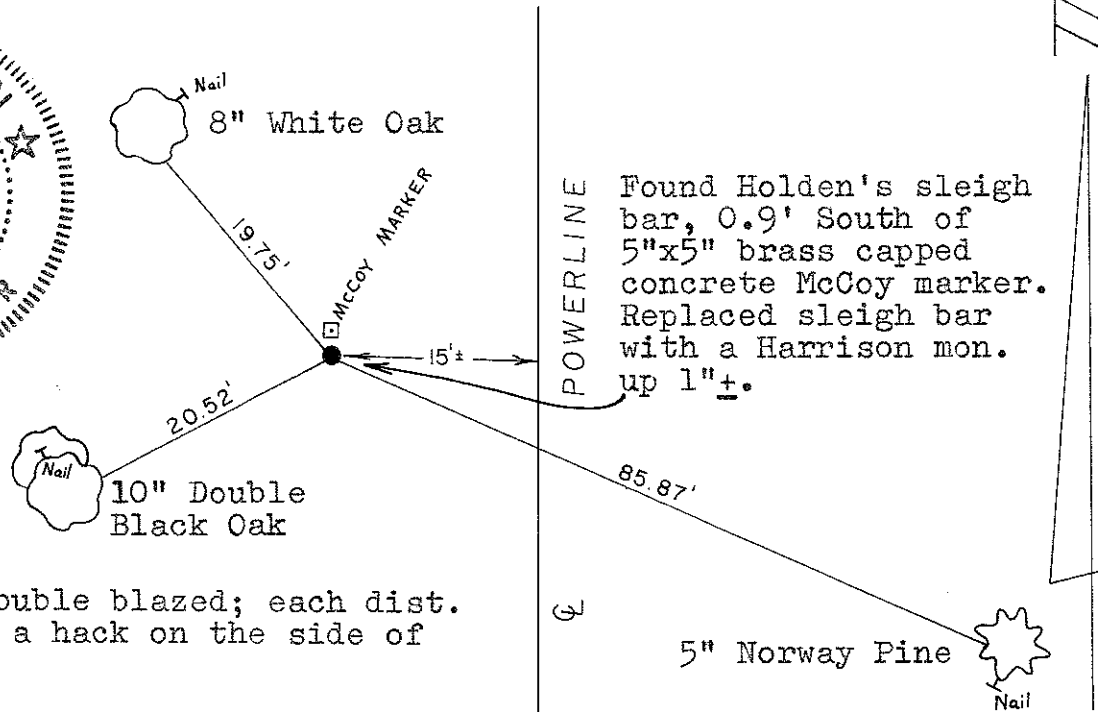
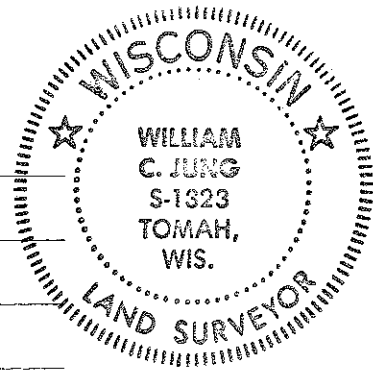
I found a sleigh bar at the corner, removed it, and replaced it with a Harrison marker. The existing McCoy marker (0.9' North of the Harrison) is a witness marker.

COUNTY SURVEYOR FORM NO. 1

Description of corner and witness monuments, references and accessories used to perpetuate the original or re-established location of this corner:

Witnesses to corner location:

William C. Jung
Bryan H. Meyer



Note: All B.T.'s double blazed; each dist. to a nail in a hack on the side of the tree.

Approved: **HARLEY A. SIME**
MONROE CO. SURVEYOR

SURVEY CONTROL ORDER

Horizontal	_____
Vertical	_____

WISCONSIN COORDINATE SYSTEM

Corner	East (X)	North (Y)	Elevation (Z)	Zone
Control Sta. Name				

~~City/Village~~ Town of Grant
County of Monroe