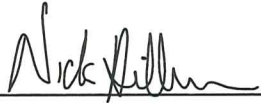


## CERTIFICATE

I, Nicholas M. Hillmer, do hereby certify that this document and the data contained herein was prepared by me or under my direct supervision and that I am a duly Licensed Land Surveyor under the laws of the State of Wisconsin.

Dated this 21st day of May, 2013



Nicholas M. Hillmer, P.L.S. 2909  
Anderson Engineering of Minnesota, LLC.

## CERTIFIED LAND CORNER

### History of corner established since Original Government Survey

Fred Holden's notes of October 1901 and May 1908 show an iron bar at this corner. The 1940's McCoy boundary notes show a corner at this location. Larry Feddersen found and used an iron at this corner in 1980. In September of 1982 William Jung found a sleigh bar at the corner. Jung removed the bar and replaced it with a Harrison monument. Jung also found a McCoy monument 1 foot to the north as a witness marker.

### Description of evidence found

On November 27th, 2012, Anderson Engineering of Minnesota located the Harrison monument flush with the ground and 1.0 foot south of the McCoy monument, a 4 inch U.S. Army Corps of Engineers survey control mark disk set in concrete.

No. 21902040000



Description of corner and witness monuments, references and accessories used to perpetuate the original or re-established location of this corner:

Witnesses to corner location:

Josh Oslund  
Dan Greenwald

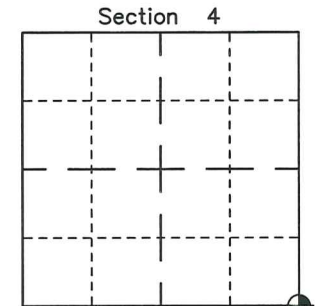
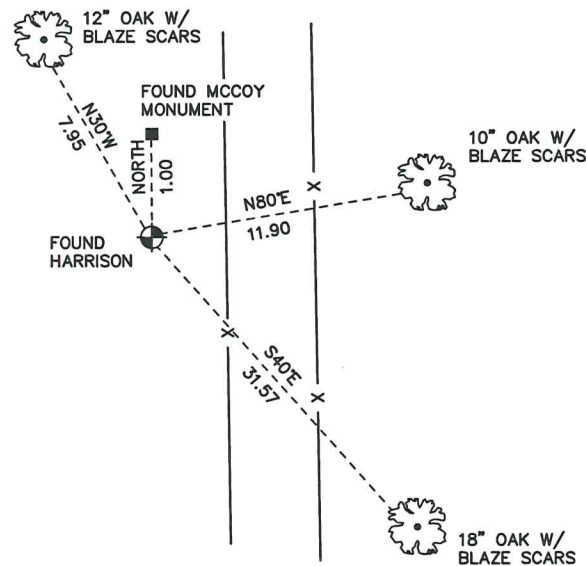
MONROE COUNTY  
COORDINATE SYSTEM  
NAD 1983 (2007)

HARRISON MONUMENT  
Northing (Y) 452626.44  
Easting (X) 678305.32

Base Station - 22 182W  
Northing (Y) 408053.25  
Easting (X) 679287.00



All distances are shown in U.S. Survey Feet.  
Ties are to 60D nails set in trees.  
Bearings are for tie reference purposes only.  
Coordinates were derived from RTK GNSS procedures.



● = LOCATION CORNER  
Corner I.D. SE 4  
T 19 N R 2 W  
Town of Grant  
Monroe County, WI.

21902040000

I, William C. Jung, do hereby certify that on the 28th day of September 1982, I found (evidence) ~~of the~~ of the Southwest corner of Section 3, T19 N, R 2 W Fourth Principal Meridian, and I re-established said corner according to the Wisconsin Statutes as shown and described hereon.

Dated this 17th day of Dec. 1982.

William C. Jung  
Deputy County Surveyor  
Title

History of corner establishment since Original Government Survey

Holden's notes of October, 1901, and May, 1908, show an iron bar at this corner. The McCoy boundary notes show an iron stake at this corner. Larry Feddersen found an iron at this corner and used it in 1980.

Description of corner evidence found:

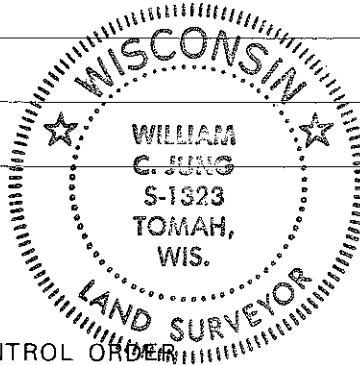
I found a sleigh bar at the corner, removed it, and replaced it with a Harrison marker. The existing McCoy marker (1' North of the Harrison) is a witness marker.

Description of corner and witness monuments, references and accessories used to perpetuate the original or re-established location of this corner:

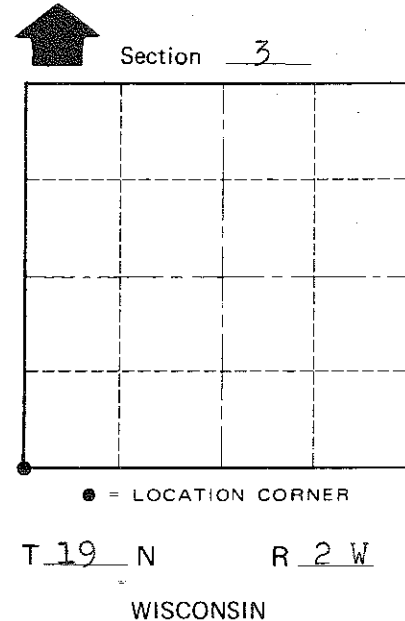
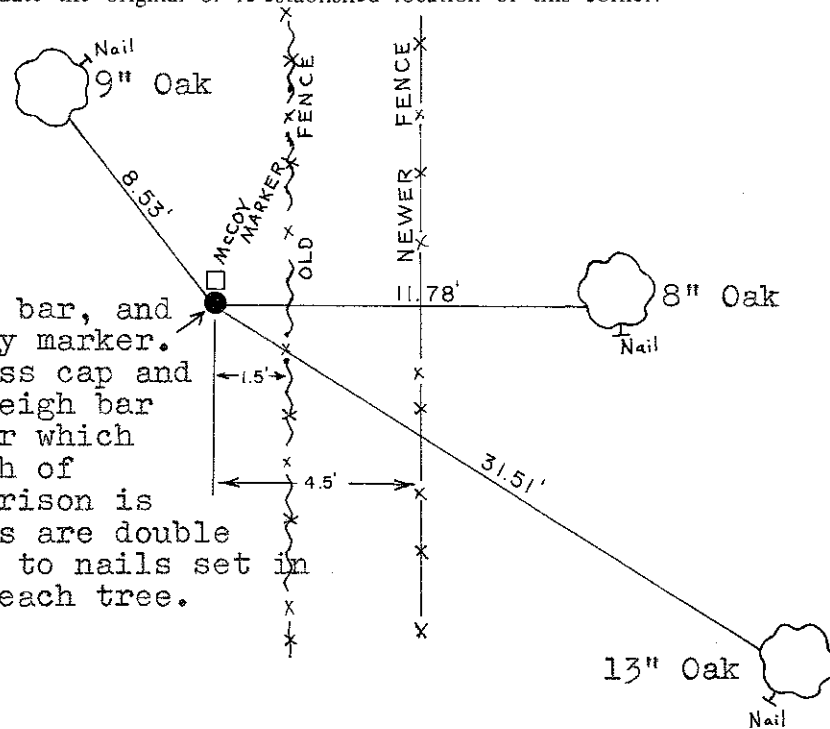
Approved: **HARLEY A. SIME**  
**MONROE CO. SURVEYOR**

Witnesses to corner location:

William C. Jung  
Bryan H. Meyer



Found Holden's sleigh bar, and a 5"x5" concrete McCoy marker. Said marker has a brass cap and is up 8". Replaced sleigh bar with a Harrison marker which is flush, and 1' South of McCoy marker. The Harrison is the corner. All B.T.'s are double blazed. Distances are to nails set in hacks in the side of each tree.



COUNTY SURVEYOR FORM NO. 1

SURVEY CONTROL ORDER

Horizontal	_____
Vertical	_____

WISCONSIN COORDINATE SYSTEM

Corner	East (X)	North (Y)	Elevation (Z)	Zone
Control Sta. Name				

~~City/Village of~~ Town of Grant  
County of Monroe