

CERTIFICATE

CERTIFIED LAND CORNER

No. 19

21902022000

I, Timothy J. Jeatran, do hereby certify that on the 16th day of September 2002, I found (evidence) (no evidence) of the W 1/4 corner of Section 1, T 19 N, R 2W, Fourth Principal Meridian, and I re-established said corner according to the Wisconsin Statutes as shown and described hereon.

Dated this 17th day of Sept. 2002.

Timothy J. Jeatran
Registered Land Surveyor
Title

History of corner establishment since Original Government Survey

No known recorded history since the original government survey.

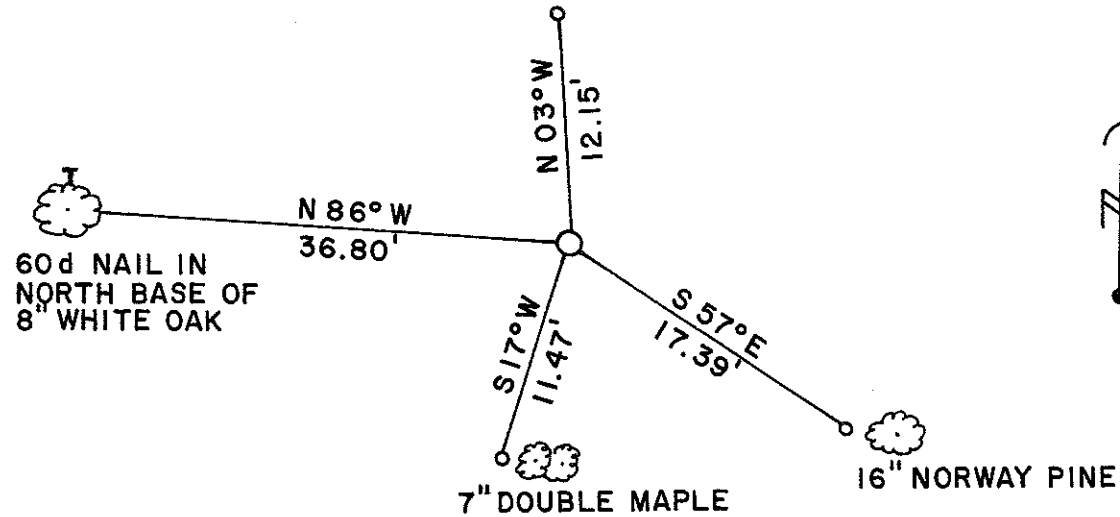
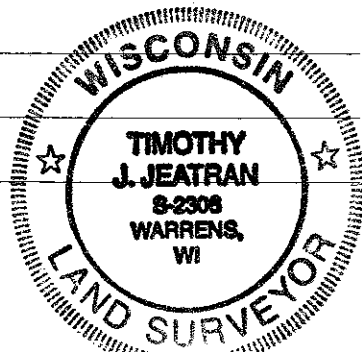
Description of corner evidence found:

In August 6, 1980, Vol. 4 C.S.M., page 203, Mark Heidecke set the C 1/4 corner & CW1/16 corner of Section 1. I intersected a line from Mark Heidecke's C 1/4 corner & CW1/16 corner with a line between the NW corner & SW corner of Section 1 and set a 1"x 60" iron pipe at the corner. Set sign post 1' West.

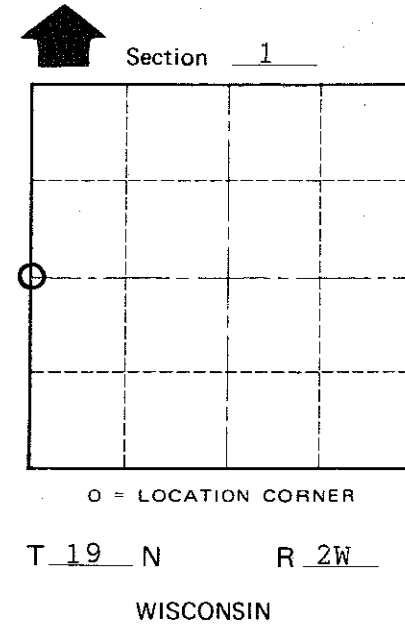
Description of corner and witness monuments, references and accessories used to perpetuate the original or re-established location of this corner:

Witnesses to corner location:

Jerry Church
Tim Jeatran



o = SET 1/2" X 30" RE BAR.



COUNTY SURVEYOR FORM NO. 1

SURVEY CONTROL ORDER

Horizontal
Vertical

WISCONSIN COORDINATE SYSTEM

Table with 5 columns: Corner, East (X), North (Y), Elevation (Z), Zone. Row 1: Control Sta. Name

City, Village or Town Grant

County of Monroe