

**U.S. PUBLIC LAND CORNER
MAINTENANCE**

23

**Corner ID: NE Sec. 11, T19N-R2W
21902020000**

<u>DATE</u>	<u>CREW</u>	<u>MONUMENT INFO</u>
March 5, 2020	Zachariah P. Dechant Gary L. Dechant	Existing Harrison intact, sign 1/2" south, 11' SE of drain field vent S58E, 95' from SE corner concrete block basement abandoned house 20993 Aspen Ave

	<u>Compass Bearing</u>	<u>Distance</u>
1) Set 3/4"x24" round iron bar, 5' SW of 10" White Pine	N20E	33.80'
2) Set 3/4"x24" round iron bar, 6' north of 14" Red Oak	South	42.40'
3) Set 3/4"x24" round iron bar, 6' NE of 5" White Pine	S35W	19.78'
4) Set 3/4"x24" round iron bar, 6' NE of 12" White Pine	S72W	53.18'

Gary L. Dechant

March 17, 2020

I, William C. Jung, do hereby certify that on the 18th day of May 1979, I found ~~(evidence)~~ (no evidence) of the Northeast corner of Section 11, T 19 N, R 2 W Fourth Principal Meridian, and I re-established said corner according to the Wisconsin Statutes as shown and described hereon.

Dated this 7th day of Feb. 1981.

William C. Jung

William C. Jung, R.L.S. 1323
Title

History of corner establishment since Original Government Survey
Fred Holden was at this corner in April of 1902.

**See Reverse Side
For Maintenance**

Description of corner evidence found:

In my research I was led to believe that Blencoe either found or set a stone at this corner, but our field search did not turn up any old marker. Set the corner at a distance from a stone at the E1/16NE, equal to the distance between the E1/16NE and the East 1/4 corner, and on line with these two corners. Monumented this corner with a Harrison marker.

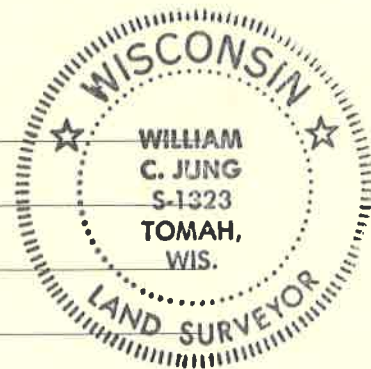
Approved: **HARLEY A. SIME**
MONROE CO. SURVEYOR

NO. _____ Description of corner and witness monuments, references and accessories used to perpetuate the original or re-established location of this corner:

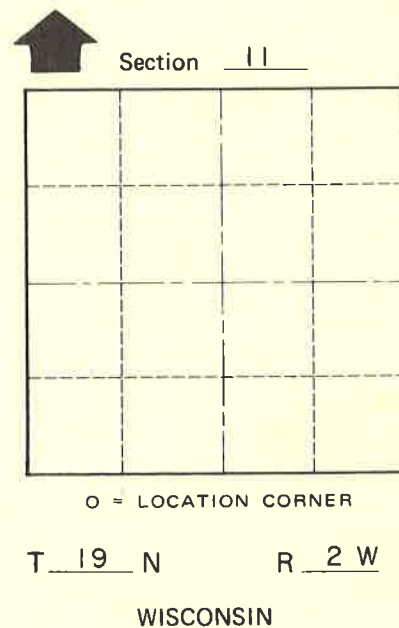
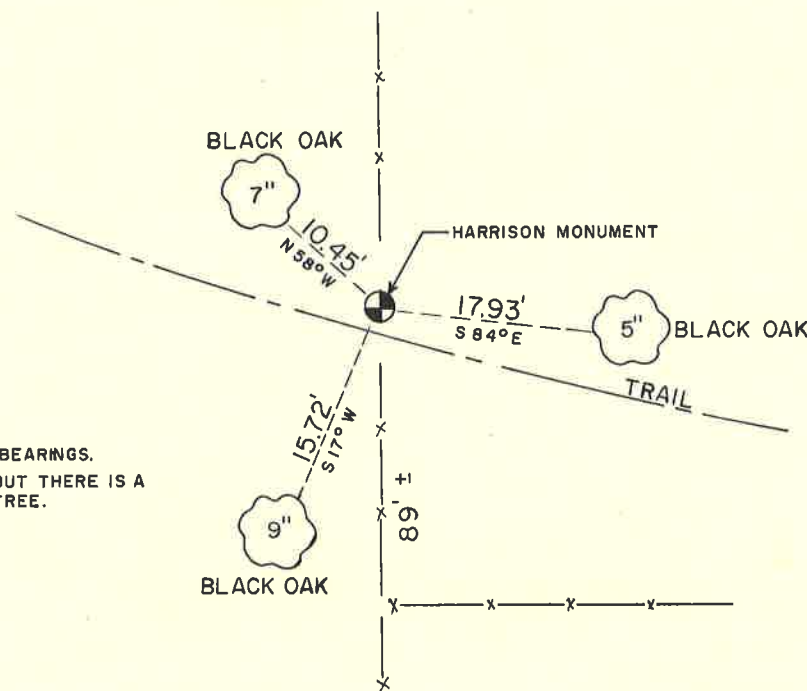
Witnesses to corner location:

Jung

Pietz



NOTES: 1. ALL BEARINGS ARE HAND COMPASS BEARINGS.
2. BEARING TREES ARE NOT BLAZED, BUT THERE IS A NAIL & CAP IN THE BASE OF EACH TREE.
3. ALL FENCES ARE OLD & DOWN.



SURVEY CONTROL ORDER

Horizontal	_____
Vertical	_____

WISCONSIN COORDINATE SYSTEM

Corner	East (X)	North (Y)	Elevation (Z)	Zone
Control Sta. Name				

~~City, Village~~ Town Grant
County of Monroe

COUNTY SURVEYOR FORM NO. _____