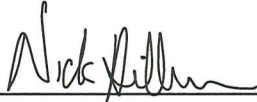


CERTIFICATE

I, Nicholas M. Hillmer, do hereby certify that this document and the data contained herein was prepared by me or under my direct supervision and that I am a duly Licensed Land Surveyor under the laws of the State of Wisconsin.

Dated this 21st day of May, 2013



Nicholas M. Hillmer, P.L.S. 2909
Anderson Engineering of Minnesota, LLC.

CERTIFIED LAND CORNER

History of corner established since Original Government Survey In October of 1901 Fred Holden's notes show a stone at this corner with a "X" and "S" on top. In 1936 David Blencoe found and accepted Holden's corner. Blencoe set an iron pipe. The 1940's McCoy boundary notes show a corner at this location. In December of 1982 William Jung found a capped pipe, a stone, and a brass capped pipe. Jung accepted the 2 1/2 inch capped pipe as the corner and the other two monuments as witness corners.

Description of evidence found

On November 29th, 2012, Anderson Engineering of Minnesota located Blencoe's 2 1/2 inch capped pipe, a stone with a cross, and a 2 inch pipe with a U.S. Army Corps of Engineers survey control mark disk. Blencoe's capped pipe is 1.5 feet above grade and has Section numbers 31, 32, 5, 6 stamped in the top of the cap. All monuments are in a mound with pits to the north, south, east, and west. Blencoe's 2 1/2 inch capped pipe is 0.4 feet west of the stone and 0.95 feet west of the USACE disk. The USACE disk is 2 feet above grade and is stamped McCoy Boundary. Also located during the search was a 2 1/2 inch pipe with a 3 inch cap that reads Wis Conservation Dept. Section Corner T20N-R2W 31, 32, 5, 6. This pipe is 51.43 feet northeast of the Blencoe's capped pipe. Blencoe's 2 1/2 inch capped pipe is accepted as the corner.

No. 22002310000



Description of corner and witness monuments, references and accessories used to perpetuate the original or re-established location of this corner:

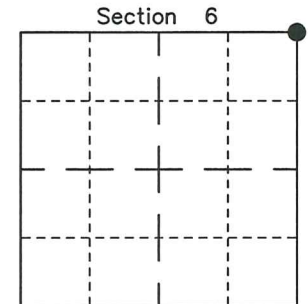
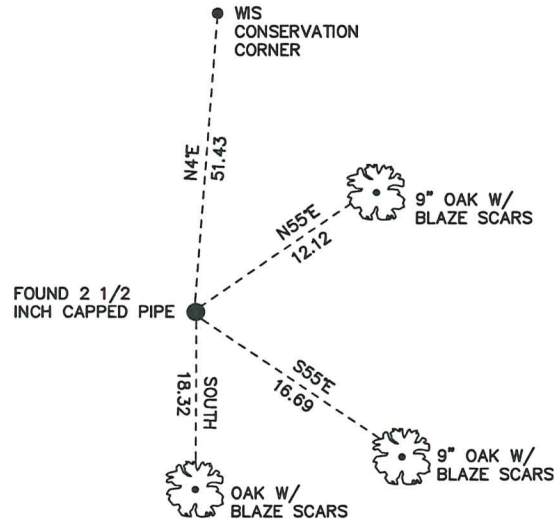
Witnesses to corner location:

Dan Greenwald
Josh Oslund

MONROE COUNTY
COORDINATE SYSTEM
NAD 1983 (2007)

2 1/2 INCH CAPPED PIPE
Northing (Y) 458174.40
Easting (X) 667883.96

Base Station - 22 182W
Northing (Y) 408053.25
Easting (X) 679287.00



● = LOCATION CORNER
Corner I.D. NE 6
T 19 N R 2 W
Town of Grant
Monroe County, WI.

All distances are shown in U.S. Survey Feet.
Ties are to 60D nails set in trees.
Bearings are for tie reference purposes only.
Coordinates were derived from RTK GNSS procedures.

22002310000

I, William C. Jung, do hereby certify that on the 16th day of December 1982, I found (evidence) ~~no evidence~~ of the Northeast corner of Section 6, T 19 N, R 2 W Fourth Principal Meridian, and I re-established said corner according to the Wisconsin Statutes as shown and described hereon.

Dated this 27th day of Jan. 1983.

William C. Jung
Deputy County Surveyor
Title

History of corner establishment since Original Government Survey
In October of 1901, Holden's notes show a stone at this corner with a "X" and "S" on top. In about 1936, David Blencoe, from Jackson County, was at this corner. His notes show that there must have been some confusion over this corner. He apparently found and accepted Holden's corner, and then set an iron pipe at the corner. This corner is 49.3' South and 3.5' West of the Conservation Corner. The McCoy boundary notes would indicate that Blencoe's Description of corner evidence found: corner was accepted as the corner.

At the corner I found a capped pipe, a stone, and a brass capped pipe. The 2 1/4" pipe with a 3" cap (Blencoe's corner) is the section corner. The other 2 monuments are witness corners.

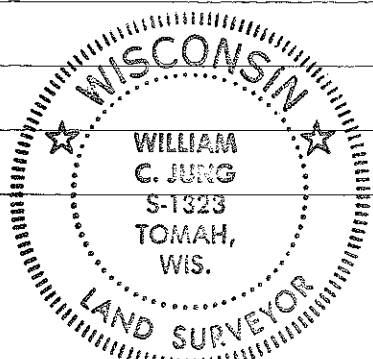
Approved: **HARLEY A. SIME**
MONROE CO. SURVEYOR

COUNTY SURVEYOR FORM NO. 1

Description of corner and witness monuments, references and accessories used to perpetuate the original or re-established location of this corner:

Witnesses to corner location:

William C. Jung



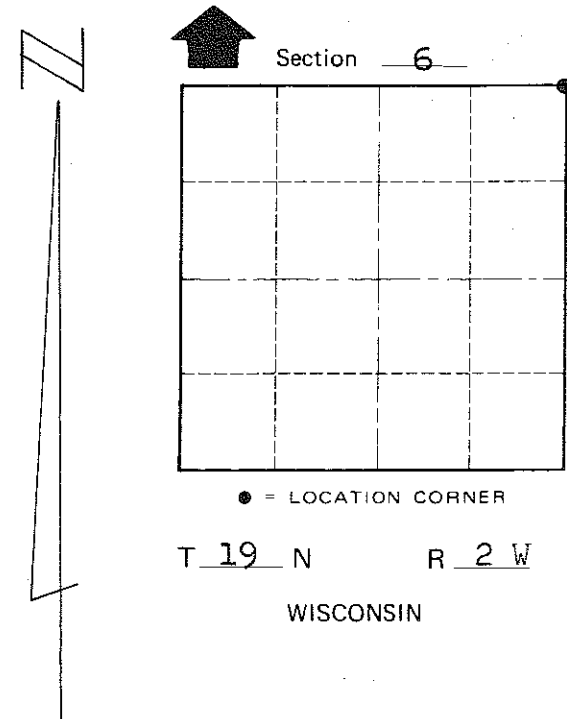
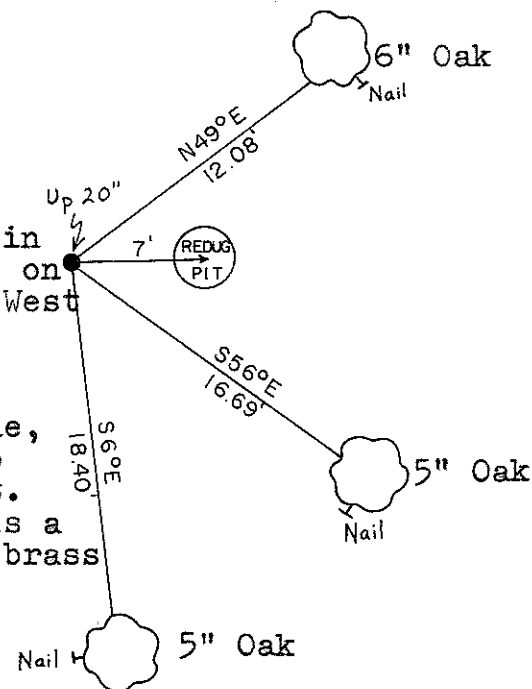
SURVEY CONTROL ORDER

Horizontal	_____
Vertical	_____

All B.T.'s are double blazed; each distance to a nail in a hack on the side of the tree.

Ex. capped pipe in mound. Corner is on top of ridge on West side.

(5" to the East is a 7"x9" stone, up 4", with a lg. cross on top and a "S" in the S.W. quadrant. Also 10 1/2" East of the corner is a 1 1/2" I.P., up 2', with an Army brass cap on top.)



WISCONSIN COORDINATE SYSTEM

Corner	East (X)	North (Y)	Elevation (Z)	Zone
Control Sta. Name				

~~City, Village or~~ Town of Grant
County of Monroe