


**CERTIFICATE**

I, Bryan H. Meyer, do hereby certify that on the 4th day of August, 2005, I found (evidence) ~~XXXXXX~~ of the Southwest corner of Section 13, T 19 N, R 2 W Fourth principle Meridian, and I re-established said corner according to the Wisconsin Statutes as shown and described hereon.

Dated this 22nd day of February 2006  
  
 \_\_\_\_\_  
 Registered Land Surveyor  
 Title

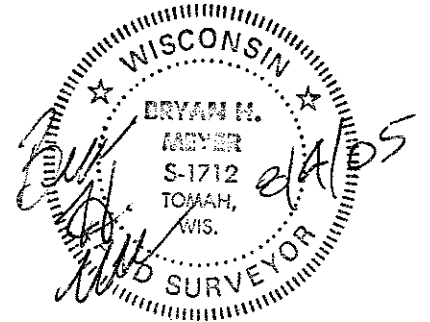
**CERTIFIED LAND CORNER**

**History of corner establishment since Original Government Survey**

This corner was re-established by myself on July 7, 1983. A recent road rehabilitation project on County Trunk Highway E covered over this corner. We were able to recover the corner and one tie. New ties were established as shown below.

No. 63 (2)

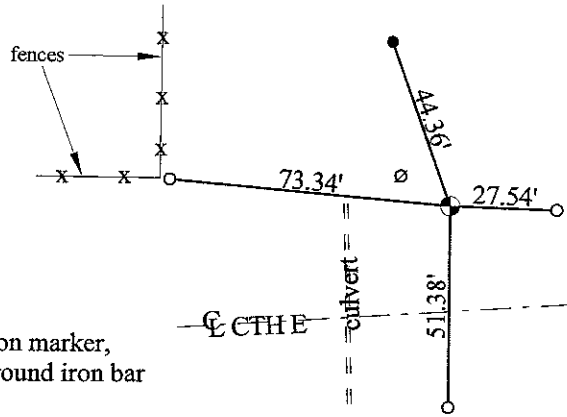
**21902140000**



Description of corner and witness monuments, references and accessories used to perpetuate the original or re-established location of this corner.

Witnesses to corner location:

Bryan H. Meyer  
 \_\_\_\_\_  
Mitchell Sime  
 \_\_\_\_\_  
 \_\_\_\_\_  
 \_\_\_\_\_



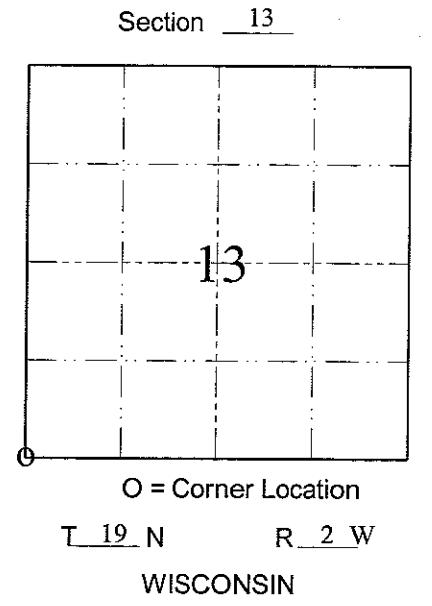
- ⊙ = Existing cast iron Harrison marker, down 16"; set 3/4"x18" round iron bar over top; bar is up 2"±.
- = Existing 3/4" round iron bar
- = Set 3/4"x18" round iron bar
- ∅ = Power pole

**SURVEY CONTROL ORDER**

Horizontal
Vertical

**MONROE COUNTY COORDINATE SYSTEM**

Corner	Northing	Easting	Elevation
Control Station Name			



~~City, Village or Town of~~ \_\_\_\_\_ of Grant  
 County of Monroe

I, Bryan H. Meyer, do hereby certify that on the 7<sup>th</sup> day of July 1983, I found ~~evidence~~ (no evidence) of the Southwest corner of Section 13, T 19 N, R 2 W Fourth Principal Meridian, and I re-established said corner according to the Wisconsin Statutes as shown and described hereon.

Dated this 15<sup>th</sup> day of July 1983.

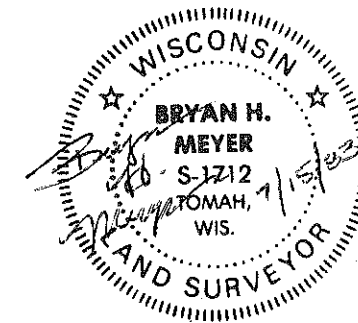
Bryan H. Meyer  
Deputy County Surveyor  
Title

History of corner establishment since Original Government Survey

Nothing Recorded.

Description of corner evidence found:

Set this corner on line between the W $\frac{1}{4}$  corner of Section 13 and the W $\frac{1}{4}$  corner of Section 24, where said line intersects the North line of the NE $\frac{1}{4}$  of Section 14, as established by Larry Fedderson in his August, 1975 survey.



COUNTY SURVEYOR FORM NO. 1

Description of corner and witness monuments, references and accessories used to perpetuate the original or re-established location of this corner:

Meyer, Wilhite  
July 7, 1983 - 10:00 A.M.  
Clear, Humid, 80°±

Witnesses to corner location:

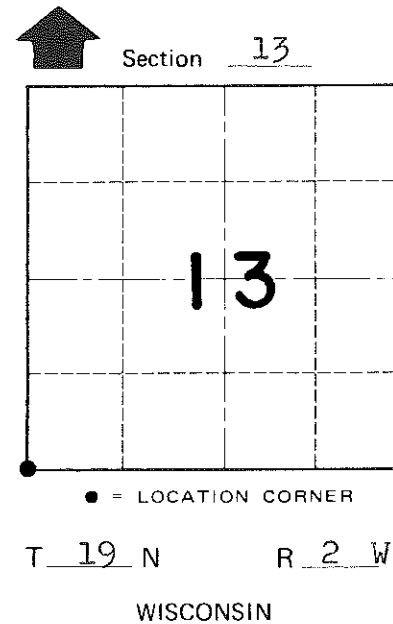
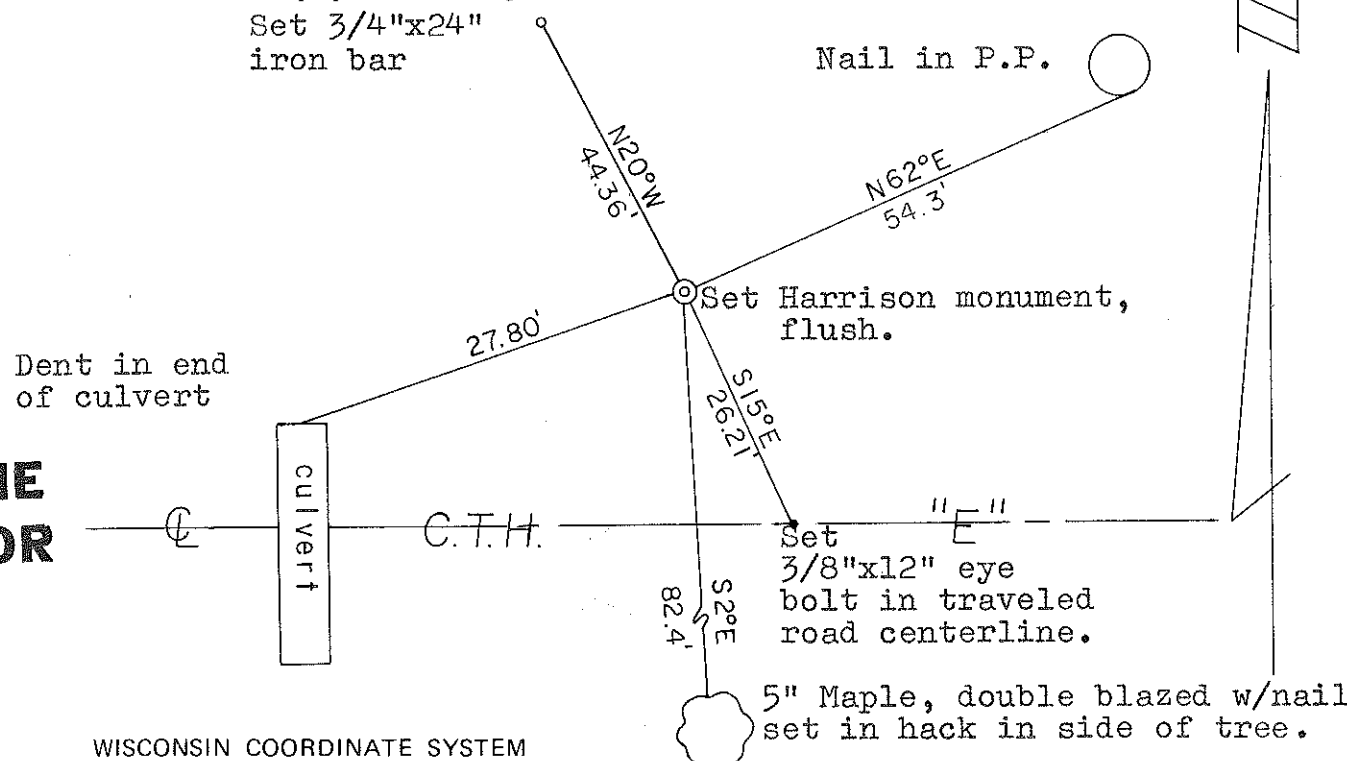
Bryan H. Meyer

Dallas Wilhite

**Approved: HARLEY A. SIME  
MONROE CO. SURVEYOR**

SURVEY CONTROL ORDER

Horizontal	_____
Vertical	_____



WISCONSIN COORDINATE SYSTEM

Corner	East (X)	North (Y)	Elevation (Z)	Zone
Control Sta. Name				

~~City, Village or~~ Town of Grant  
County of Monroe