

CERTIFICATE

CERTIFIED LAND CORNER

No. 39e

21902123030

I, Harley A. Sime, do hereby certify that on the 29th day of September 1971, I found (evidence) (~~no evidence~~) of the NE Cor.-SW-NW corner of Section 12, T 19 N, R 2 W Fourth Principal Meridian, and I re-established said corner according to the Wisconsin Statutes as shown and described hereon.

History of original corner establishment:

Fred Holden set a corner stone here in Sept. of 1902.

Description of corner evidence found:

Found stone with cross set by Fred Holden in 1902. Stone is flush with ground.

Dated this 6th day of Feb. 1978.

County Surveyor Approved: HARLEY A. SIME  
MONROE CO. SURVEYOR

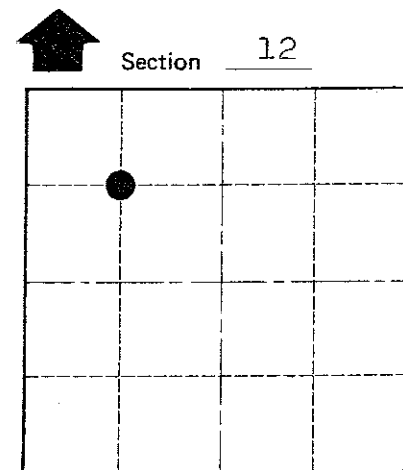
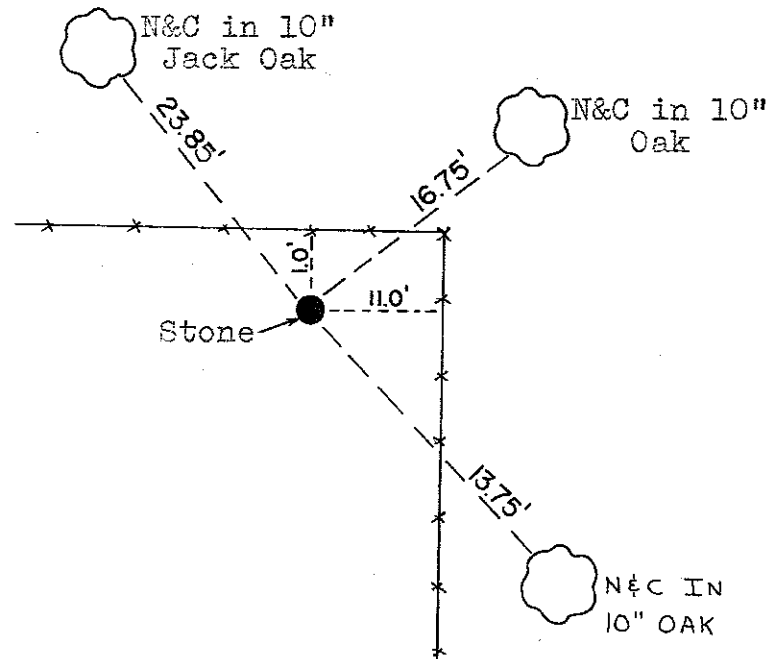
COUNTY SURVEYOR FORM NO. 1

Description of corner and witness monuments, references and accessories used to perpetuate the original or re-established location of this corner:

Witnesses to corner location:

D. Marten  
K. Lenz

North



O = LOCATION CORNER

T 19 N R 2 W

WISCONSIN

SURVEY CONTROL ORDER

Horizontal	_____
Vertical	_____

WISCONSIN COORDINATE SYSTEM

Corner	East (X)	North (Y)	Elevation (Z)	Zone
Control Sta. Name				

City, Village or Town Grant

County of Monroe