

CERTIFICATE

CERTIFIED LAND CORNER

No. 38F

21902113020

I, Harley A. Sime, do hereby certify that on the 13 day of September 1977, I found (evidence) (~~no evidence~~) of the E 1/8-NW/4 corner of Section 11, T 19 N, R 2 W. Fourth Principal Meridian, and I re-established said corner according to the Wisconsin Statutes as shown and described hereon.

History of original corner establishment:

Holden set an iron shim here in 1902.

Description of corner evidence found:

Surveyed and monumented the corner as set forth in Chapter 59.62 of the Wisconsin Statutes. True 1/8 Corner falls 5.72 feet South of Hurlburt's point "C"

Dated this 15 day of Sept. 1977.

County Surveyor Approved: HARLEY A. SIME
Title MONROE CO. SURVEYOR

Description of corner and witness monuments, references and accessories used to perpetuate the original or re-established location of this corner:

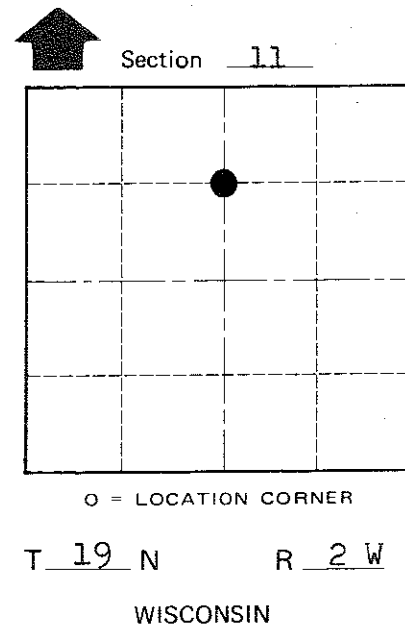
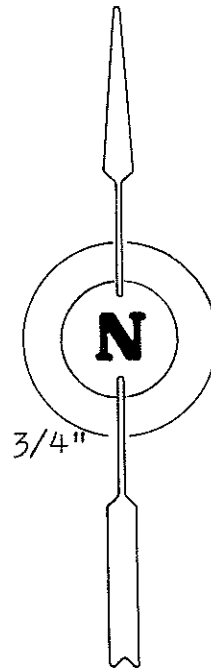
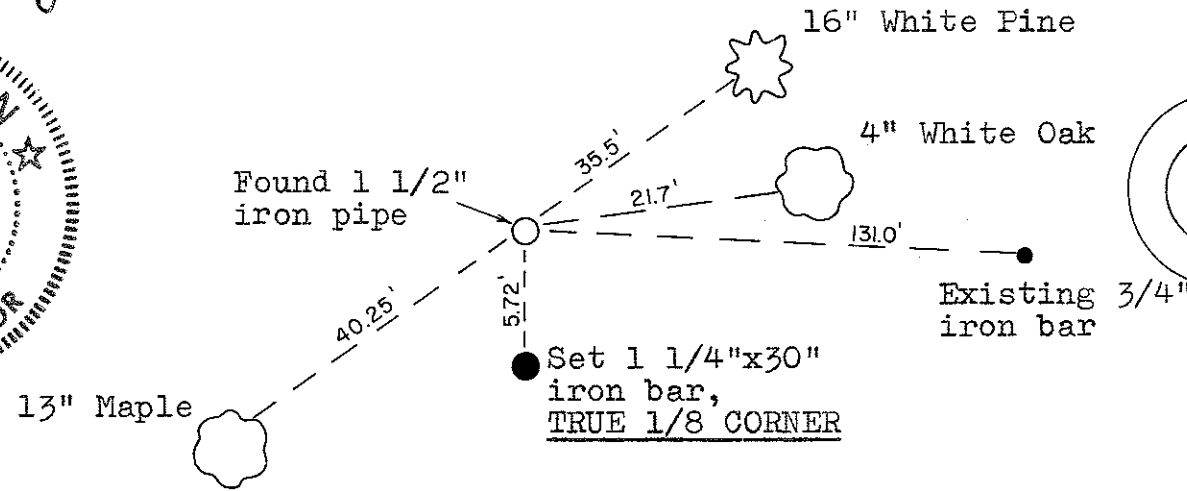
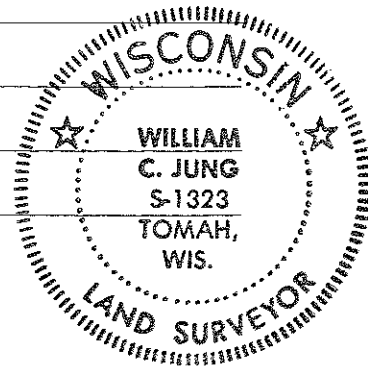
Set a 1 1/4" iron bar.

Witnesses to corner location:

W. C. Jung - Crew Chief *W. C. Jung*

G. L. Dechant

(All trees double blazed)



COUNTY SURVEYOR FORM NO. 1

SURVEY CONTROL ORDER

Horizontal	_____
Vertical	_____

WISCONSIN COORDINATE SYSTEM

Corner	East (X)	North (Y)	Elevation (Z)	Zone
Control Sta. Name				

City, Village or Town Grant

County of Monroe