

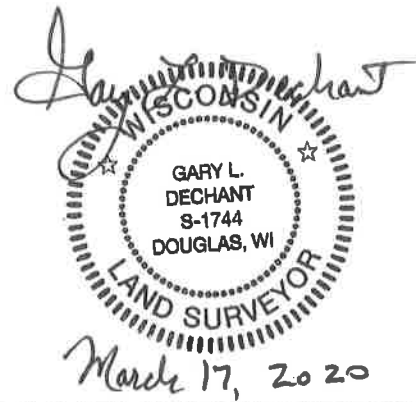
**U.S. PUBLIC LAND CORNER
MAINTENANCE**

38 B

**Corner ID: C1/4 Sec. 11, T19N-R2W
21902112020**

<u>DATE</u>	<u>CREW</u>	<u>MONUMENT INFO</u>
March 4, 2020	Zachariah P. Dechant Gary L. Dechant	Recorded 1 1/4" iron bar gone. Reset from 1978 BT's with a 1"x6 1/2" iron pipe shown in Vol 11 CSM P 84 dated March 1, 1997. Reset from 1978 BT's: 12" Pine 45.48' SE & 14" Pine 30.66 SW, cut into trees to N&C in face of trees

	<u>Compass Bearing</u>	<u>Distance</u>
1) Set 3/4"x24" round iron bar, 4' SW of 4" White Pine	N32E	34.58
2) Set 3/4"x24" round iron bar, center of trail	N72E	30.98'
3) Set 3/4"x24" round iron bar, 4' NW of 20" White Pine (1978 BT)	S60E	39.90'
4) Set 3/4"x24" round iron bar, 4' NE of 2" White Pine, west side of pit	S8W	29.15'



I, William C. Jung, do hereby certify that on the 4th day of April 1978, I found (evidence) ~~(no evidence)~~ of the C/4 corner of Section 11, T 19 N, R 2 W Fourth Principal Meridian, and I re-established said corner according to the Wisconsin Statutes as shown and described hereon.

Dated this 12th day of Dec. 1978.
William C. Jung, R.L.S. 1323
Crew Chief, County Surveyor's
Title Office

History of original corner establishment:

Fred Holden set a stake at this corner in April of 1902.

Description of corner evidence found:

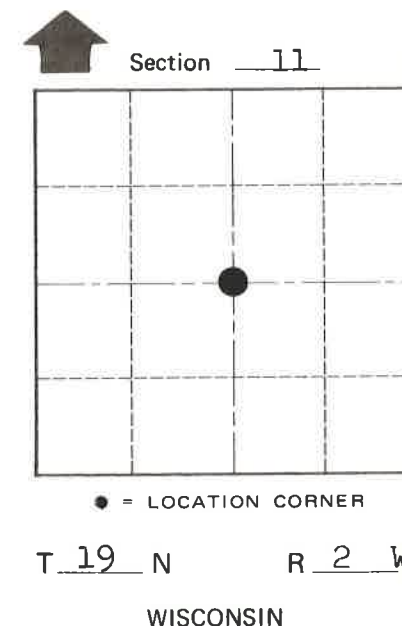
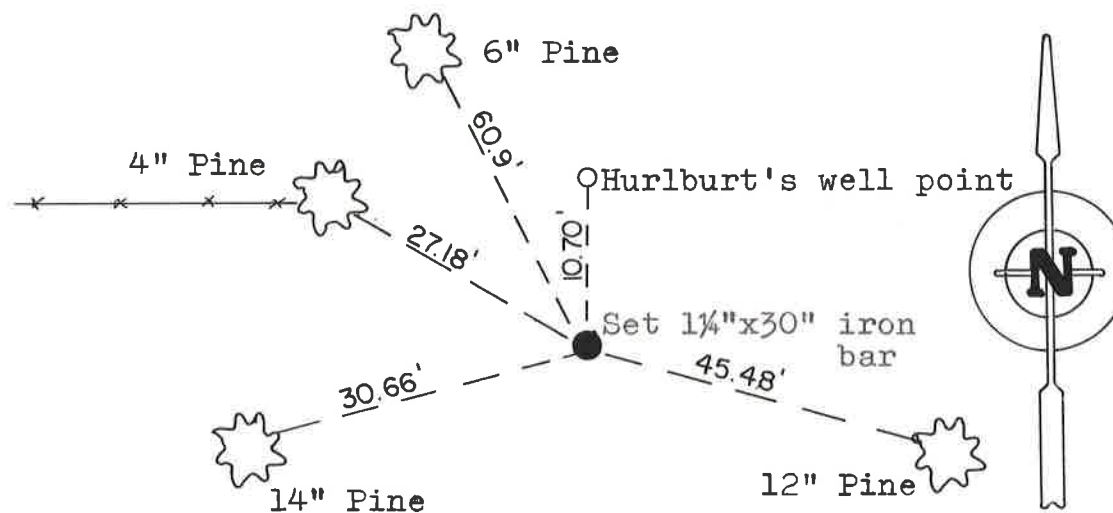
Set the corner at the intersection of the 1/4 lines.

**See Reverse Side
For Maintenance**

Description of corner and witness monuments, references and accessories used to perpetuate the original or re-established location of this corner:

Witnesses to corner location:

W. Jung
G. Dechant



(All trees double blazed with a N&C set in each.)

SURVEY CONTROL ORDER

Horizontal _____
Vertical _____

Approved by: Harley A. Sime
County Surveyor

WISCONSIN COORDINATE SYSTEM

Corner	East (X)	North (Y)	Elevation (Z)	Zone
Control Sta. Name				

City, Village or Town Grant
County of Monroe

COUNTY SURVEYOR FORM NO. 1