

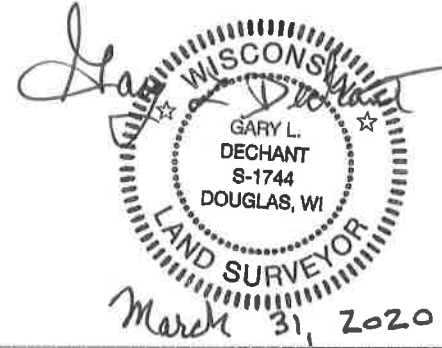
**U.S. PUBLIC LAND CORNER  
MAINTENANCE**

**# 39**

**Corner ID: E1/4 Sec. 11, T19N-R2W  
21902112000**

<u>DATE</u>	<u>CREW</u>	<u>MONUMENT INFO</u>
March 27, 2020	Zachariah P. Dechant Gary L. Dechant	Existing Harrison, intact, survey sign on east side, steel post on west side

	<u>Compass Bearing</u>	<u>Distance</u>
1) Set 3/4"x24" round iron bar, down 6", 4' SW of 8" White Pine	N44E	16.68'
2) Set 3/4"x24" round iron bar, down 6", 4' NW of 4" White Pine in open area	S76E	54.33'
3) Set 3/4"x24" round iron bar, 4' NE of 12" Black Oak	S34W	28.88'
4) Set 3/4"x24" round iron bar, 6' SE of 10" White Pine/16" Black Oak growing together	N32W	26.91'



I, William C. Jung, do hereby certify that on the 18<sup>th</sup> day of May 1979, I found (evidence) ~~(no evidence)~~ of the E<sup>1/4</sup> corner of Section 11, T19 N, R 2 W Fourth Principal Meridian, and I re-established said corner according to the Wisconsin Statutes as shown and described hereon.

Dated this 7th day of Feb. 1981.

William C. Jung

William C. Jung, R.L.S. 1323

Title

History of corner establishment since Original Government Survey  
Fred Holden was at this corner in April of 1902.

**See Reverse Side  
For Maintenance**

Description of corner evidence found:

I found two old stunted white oaks which I believe are Holden's old bearing trees. Measuring back from them puts me in the old fence intersection. My measurement from this corner to the E1/16SE (where I found two of Holden's bearing trees) checks very well with my alignment and measurement between the E1/16SE and the S.E. corner. Monumented this corner with a Harrison marker.

Approved: **HARLEY A. SIME**

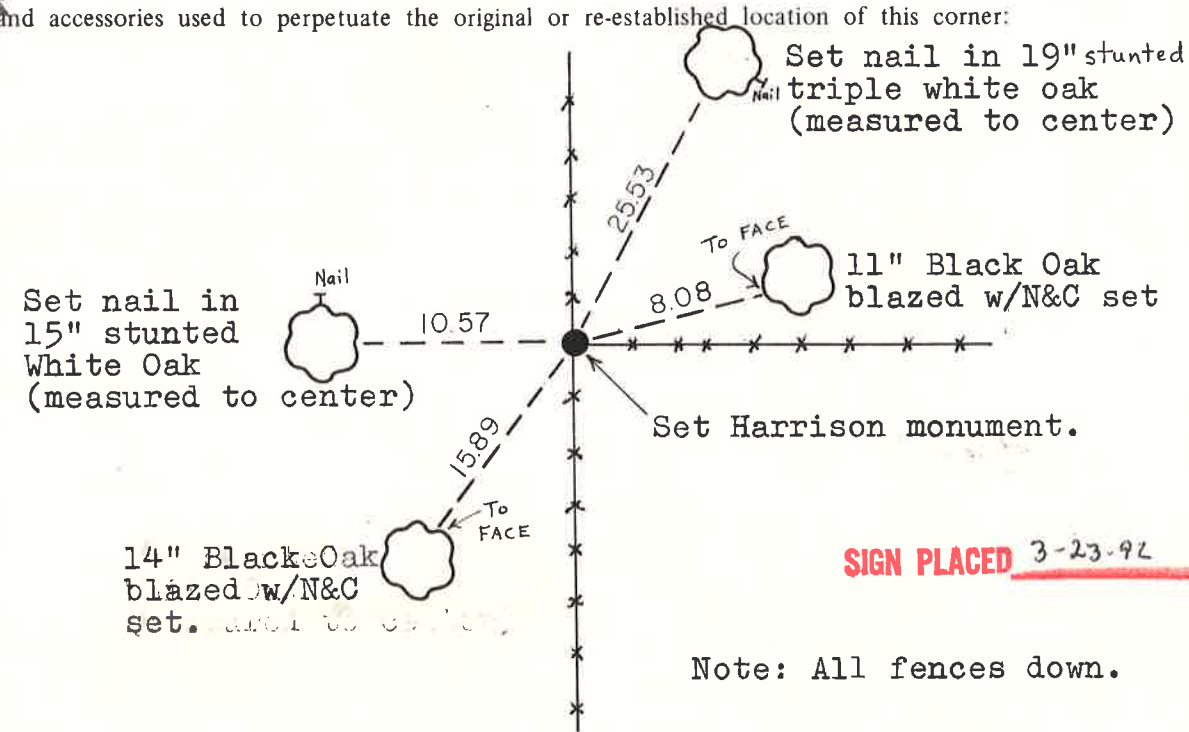
**MONROE CO. SURVEYOR**

Description of corner and witness monuments, references and accessories used to perpetuate the original or re-established location of this corner:

Witnesses to corner location:

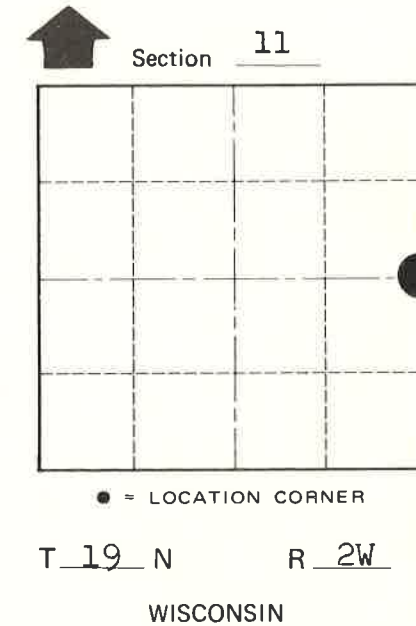
W. Jung

C. Pietz



**SIGN PLACED 3-23-92**

Note: All fences down.



COUNTY SURVEYOR FORM NO. 1

SURVEY CONTROL ORDER

Horizontal	_____
Vertical	_____

WISCONSIN COORDINATE SYSTEM

Corner	East (X)	North (Y)	Elevation (Z)	Zone
Control Sta. Name				

City, Village or Town Grant  
County of Monroe