

**U.S. PUBLIC LAND CORNER
MAINTENANCE**

44

**Corner ID: S1/4 Sec. 11, T19N-R2W
21902110020**

| <u>DATE</u> | <u>CREW</u> | <u>MONUMENT INFO</u> |
|---------------|---|---|
| March 5, 2020 | Zachariah P. Dechant Gary L. Dechant | Existing Stone (+), grader blade west side of stone, sign 1' north, Approx. N25E 130' from log house @ 3061 Blueberry road |

| | <u>Compass Bearing</u> | <u>Distance</u> |
|---|------------------------|-----------------|
| 1) Set 3/4"x24' round iron bar, 5' SW of 18" White Oak (1979 BT) | N20E | 40.32' |
| 2) Set 3/4"x24" round iron bar, down 6", 5' SW of 4" Maple | N57E | 25.00' |
| 3) Set 3/4"x24" round iron bar, 5' SE of 20" Red Oak | N43W | 23.70' |
| 4) Set 3/4"x24" round iron bar, 14"x16" triangular stone over bar 5' SE of 10" Maple | N10W | 30.98' |
| 5) Existing 3/4" round iron bar at road PI 3061 Blueberry Road | S40E | 248.18' |

Gary L. Dechant

March 17, 2020

I, William C. Jung, do hereby certify that on the 14th day of May 1979, I found (evidence) ~~(no evidence)~~ of the S¼ corner of Section 11, T19 N, R 2 W Fourth Principal Meridian, and I re-established said corner according to the Wisconsin Statutes as shown and described hereon.

Dated this 15th day of May 1979.

William C. Jung, R.L.S. 1323

Crew Chief, County Surveyor's
Office

William C. Jung

Approved: **HARLEY A. SIME**
MONROE CO. SURVEYOR

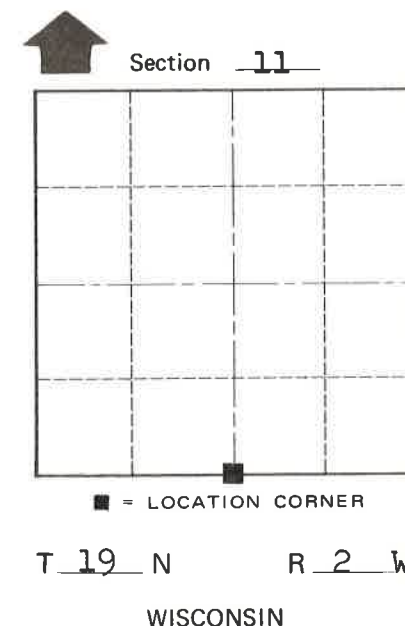
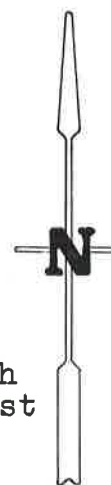
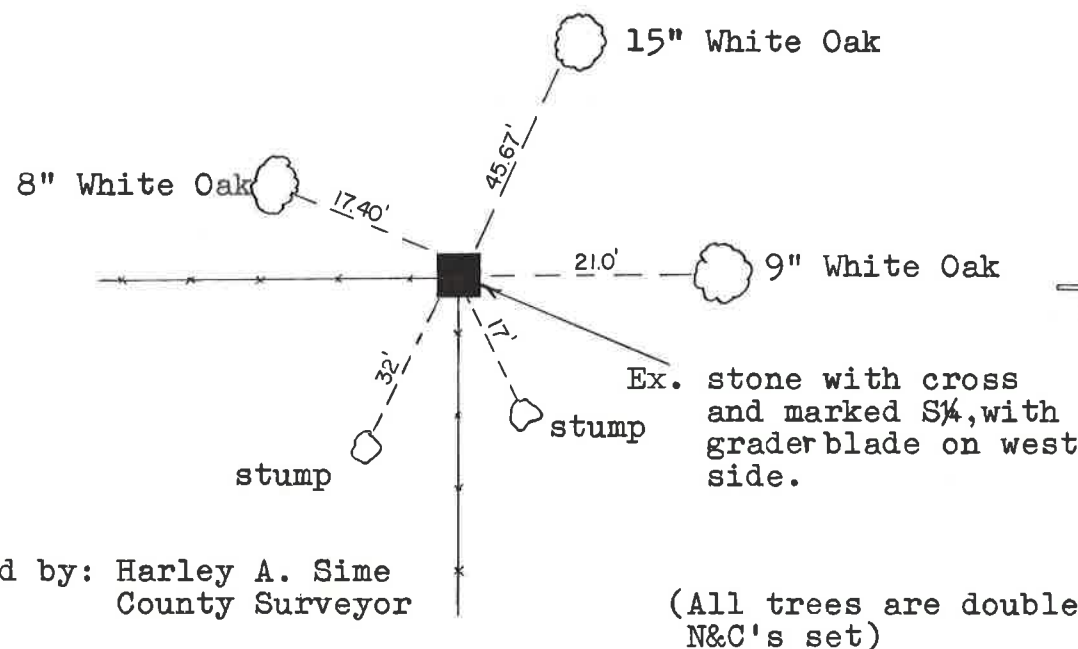
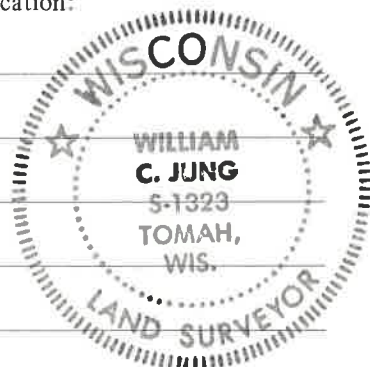
**See Reverse Side
For Maintenance**

Description of corner and witness monuments, references and accessories used to perpetuate the original or re-established location of this corner:

Witnesses to corner location:

W. Jung

G. Dechant



Approved by: Harley A. Sime
County Surveyor

(All trees are double blazed with N&C's set)

SURVEY CONTROL ORDER

| | |
|------------|-------|
| Horizontal | _____ |
| Vertical | _____ |

WISCONSIN COORDINATE SYSTEM

| Corner | East (X) | North (Y) | Elevation (Z) | Zone |
|-------------------|----------|-----------|---------------|------|
| Control Sta. Name | | | | |

City, Village or Town Grant
County of Monroe

COUNTY SURVEYOR FORM NO. 1