

# 43

**U.S. PUBLIC LAND CORNER  
MAINTENANCE**

**Corner ID : SE Sec.11, T19N-R2W**

**21902110000**

<u>DATE</u>	<u>CREW</u>	<u>MONUMENT TYPE -----</u>
July 31, 2014	Zachariah P.Dechant Gary L. Dechant	Existing Stone(+) with Harrison on north side as witness marker. Top of Harrison broke off. Top of stone faces northward. Sign N side of stone. Falls in N-S fence, 89' South of centerline Arcadia Ave. All BT's gone.

References:

	<u>Bearing</u>	<u>Distance</u>
1) Set 3/4" x24" hex iron bar, down 6"	N21E	19.58'
2) Set 3/4" x 24" hex iron bar, down 6"	N73E	20.14'
3) Set 3/4"x24" hex iron bar, down 6"	S41W	22.56'
4) Set 3/4"x24" hex iron bar, down 6", 4' west of fence	N3W	15.51'

**COORDINATES:**



I, William C. Jung, do hereby certify that on the 14th day of May 1979, I found (evidence) (~~no evidence~~) of the SE corner of Section 11, T 19 N, R 2 W, Fourth Principal Meridian, and I re-established said corner according to the Wisconsin Statutes as shown and described hereon.

Dated this 15th day of May 1979.  
William C. Jung, R.L.S. 1323

Crew Chief, County Surveyor's  
Title Office

*William C. Jung*

Approved: **HARLEY A. SIME**  
**MONROE CO. SURVEYOR**

History of original corner establishment:

Fred Holden was here in April of 1902 and set a stone as the corner. David Blencoe was also here in May of 1932 and found the stone.

Description of corner evidence found:

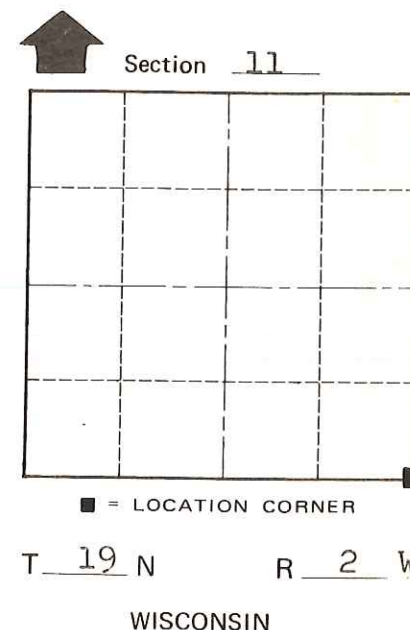
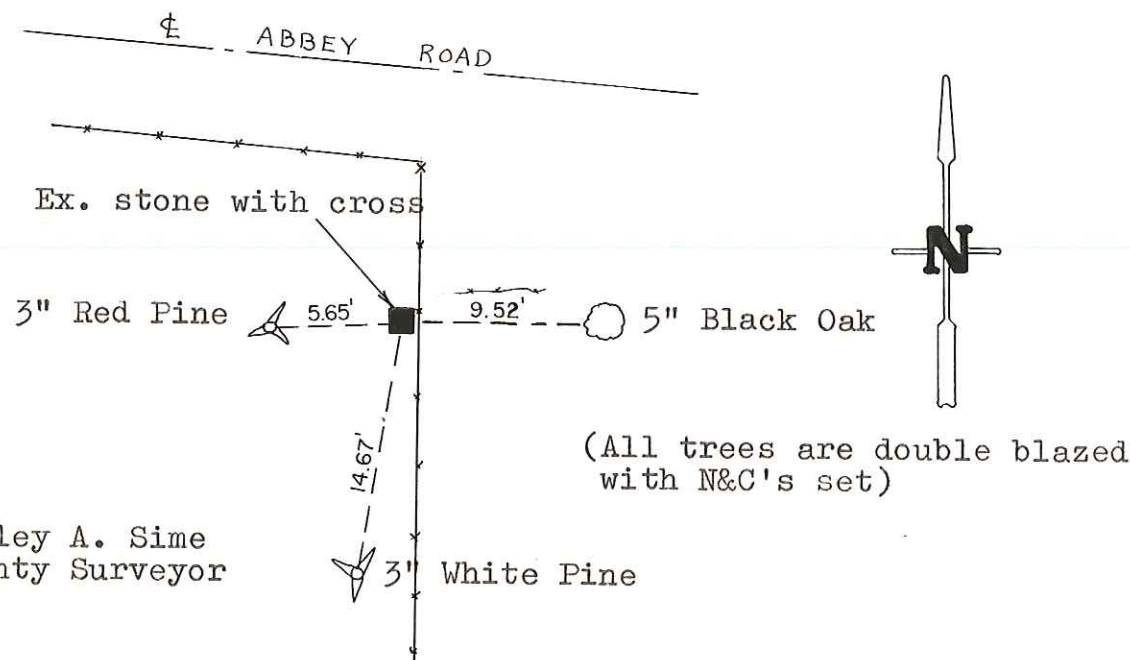
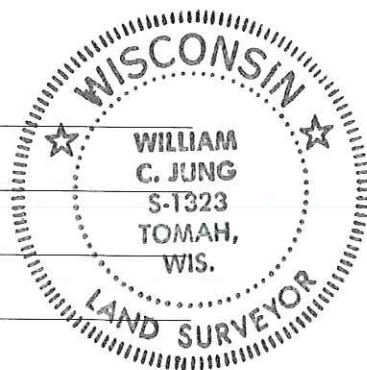
Found Holden's stone with a cross and set a Harrison on the north side of the stone as a witness marker. The stone is the corner.

**See Reverse Side  
For Maintenance**

Description of corner and witness monuments, references and accessories used to perpetuate the original or re-established location of this corner:

Witnesses to corner location:

W. Jung  
G. Dechant



Approved by: Harley A. Sime  
County Surveyor

SURVEY CONTROL ORDER

Horizontal	_____
Vertical	_____

WISCONSIN COORDINATE SYSTEM

Corner	East (X)	North (Y)	Elevation (Z)	Zone
Control Sta. Name				

City, Village or Town Grant  
County of Monroe

COUNTY SURVEYOR FORM NO. 1