

# 101/113

**U.S. PUBLIC LAND CORNER  
MAINTENANCE**

**Corner ID : SE Sec.25, T19N-R2W  
21902250000**

<u>DATE</u>	<u>CREW</u>	<u>MONUMENT TYPE</u> -----
June 15, 2016	Zachariah P.Dechant Gary L. Dechant	Existing Harrison in tact at fence corner, 15' west of driveway fire number 21858 Clay Ave.

References:

	<u>Bearing</u>	<u>Distance</u>
1) Set 3/4"x24" round iron bar, down 6" south & east of driveway	N68E	45.91'
2) Set 3/4"x24" round iron bar, down 6", 4' south of 14" White Pine	S64E	51.23'
3) Set 3/4"x24" round iron bar, down 6" 6' SE of 14" Maple	S50W	17.84'
4) Set 3/4"x24" round iron bar, down 6"	N56W	18.69'



I, William C. Jung, do hereby certify that on the 8th day of November 1977, I found (evidence) (~~no evidence~~) of the S.E. corner of Section 25, T 19 N, R 2 W Fourth Principal Meridian, and I re-established said corner according to the Wisconsin Statutes as shown and described hereon.

Dated this 15th day of Nov. 1977.

William C. Jung, R.L.S. 1323

Crew Chief, County Surveyor's  
Title Office

History of original corner establishment:

No known recorded history since the original government survey.

Description of corner evidence found:

Duane Marten found a 1" iron pipe at this corner in December of 1971. The pipe had been used in previous surveys. Marten replaced the pipe with a Harrison marker. I found this monument and made the necessary ties.

**See Reverse Side For Maintenance**

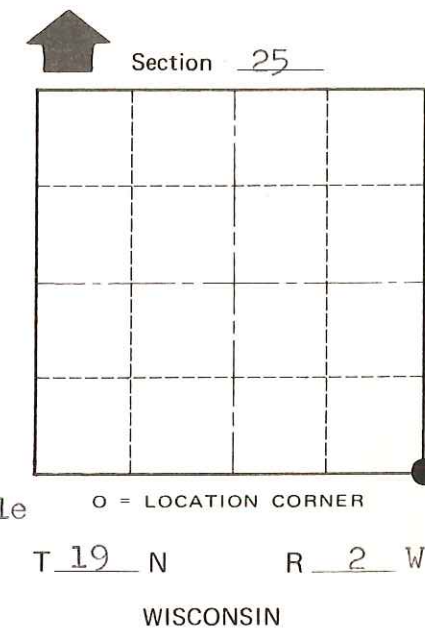
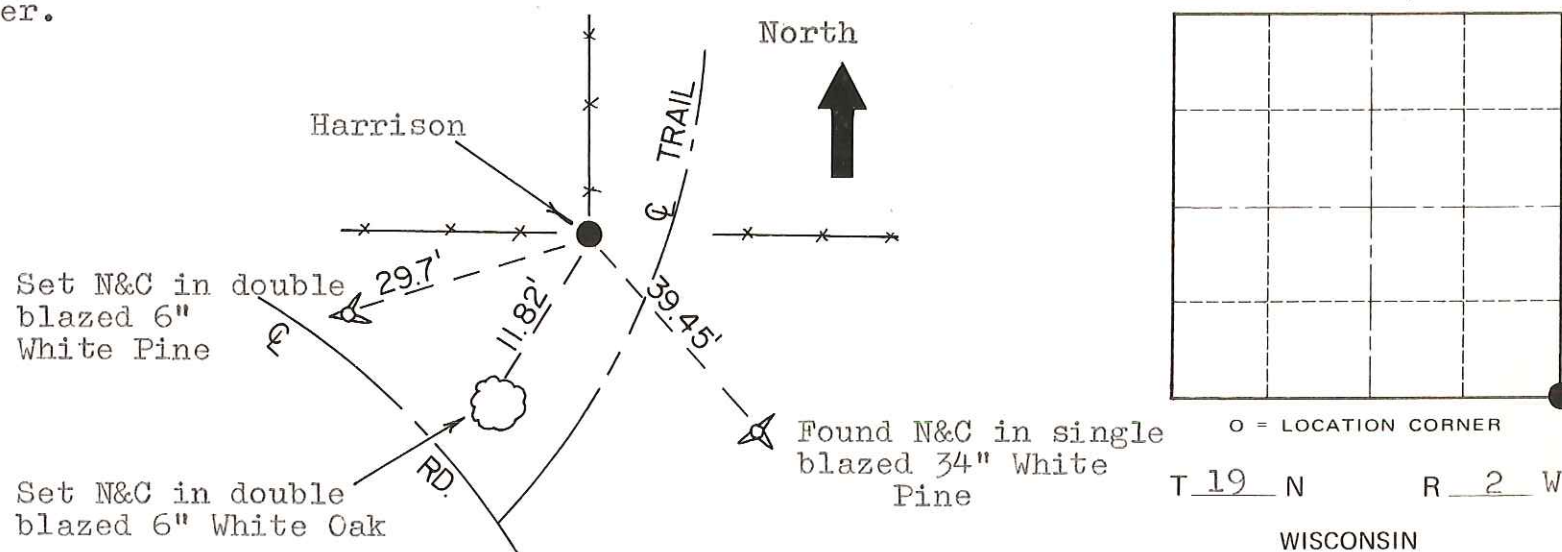
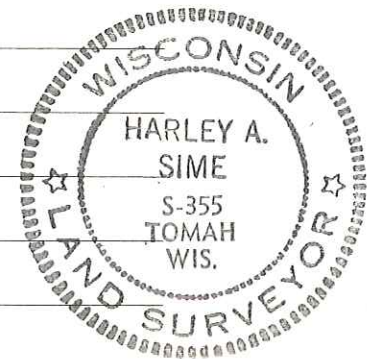
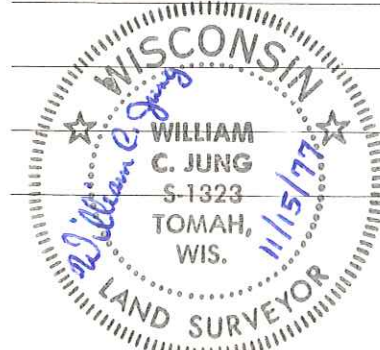
Description of corner and witness monuments, references and accessories used to perpetuate the original or re-established location of this corner:

Found Harrison marker, up 1" at fence corner.

Witnesses to corner location:

W. C. Jung

G. Dechant



SURVEY CONTROL ORDER

Horizontal	_____
Vertical	_____

Approved: Harley Sime  
County Surveyor

WISCONSIN COORDINATE SYSTEM

Corner	East (X)	North (Y)	Elevation (Z)	Zone
Control Sta. Name				

City, Village or Town Grant

County of Monroe

COUNTY SURVEYOR FORM NO. 1