

# 80 / 74

**U.S. PUBLIC LAND CORNER  
MAINTENANCE**

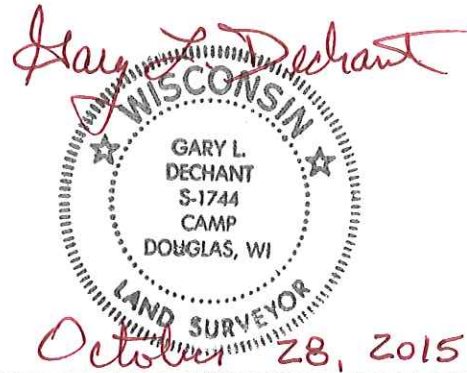
**Corner ID : E1/4 Sec.24, T19N-R2W**

**21902242000**

<u>DATE</u>	<u>CREW</u>	<u>MONUMENT TYPE</u> -----
May 6, 2015	Zachariah P. Dechant Gary L. Dechant	Existing 1 1/4" iron pipe, up 15" Set sign 2' North

References:

	<u>Bearing</u>	<u>Distance</u>
1) Set 1"x12" iron pipe, down 6", 10 east of 32" Black Oak that is in north-south fence line	N26E	24.66'
2) Set 3/4"x24" round iron bar, down 6", 4' SW of 16" Maple	N75E	28.15'
3) Set 3/4"x24" round iron bar, down 6", 3' NE of 2" White Pine	S53E	19.97'
4) Set 3/4"x24" round iron bar, down 6", 3' north of wood corner post of pasture fence	N88W	75.36'



I, William C. Jung, do hereby certify that on the 24<sup>th</sup> day of October 1980, I found (evidence) ~~no evidence~~ of the West 1/4 corner of Section 19, T 19 N, R 1 W Fourth Principal Meridian, and I re-established said corner according to the Wisconsin Statutes as shown and described hereon.

Dated this 12<sup>th</sup> day of February 1981.

William C. Jung  
 Title William C. Jung - R.L.S. 1323

History of corner establishment since Original Government Survey

A.S. Ingalls was at this corner in April of 1873.

Description of corner evidence found:  
 Found a 1 1/4" iron pipe at this corner. This monument is unrecorded, but my measurements show it to fit the town line very well. The pipe also fits the occupied corner. It appears that someone had pounded hard to get the pipe in, as the top of the pipe is peeled over. The pipe was so well imbedded, I used the pipe as the monument.

**See Reverse Side For Maintenance**

Replaced N/A With N/A  
 On 1/4/83 Crew: Jung  
 Comments W. Kenyon was at this corner in June of 1885.

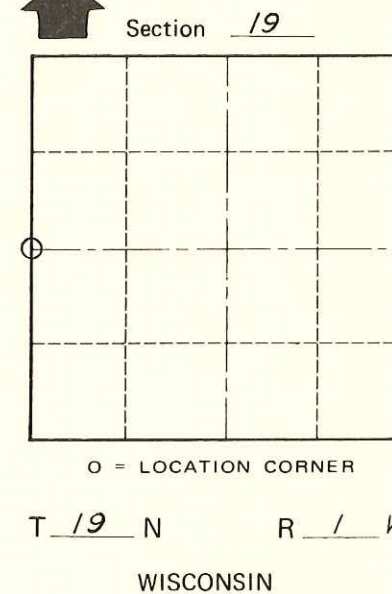
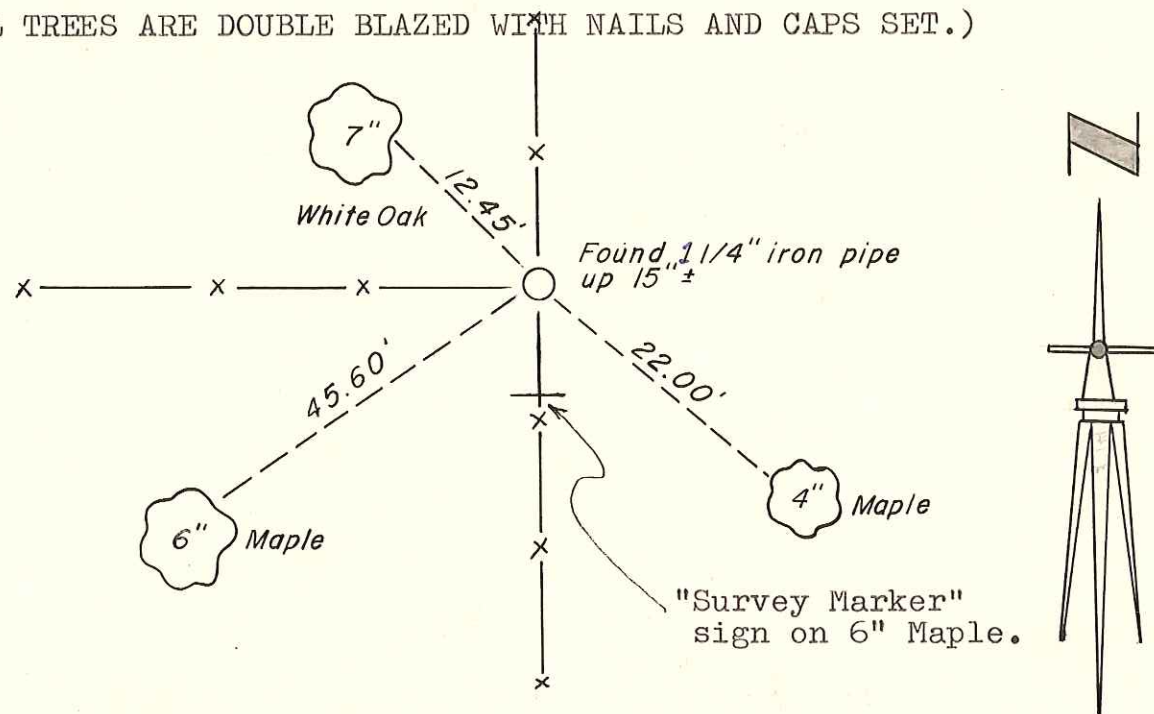
COUNTY SURVEYOR FORM NO. 1

Description of corner and witness monuments, references and accessories used to perpetuate the original or re-established location of this corner:

(ALL TREES ARE DOUBLE BLAZED WITH NAILS AND CAPS SET.)

Witnesses to corner location:

W. Jung  
G. Dechant  
M. Sowers



Approved: **HARLEY A. SIME**  
**MONROE CO. SURVEYOR**

SURVEY CONTROL ORDER

Horizontal	_____
Vertical	_____

WISCONSIN COORDINATE SYSTEM

Corner	East (X)	North (Y)	Elevation (Z)	Zone
Control Sta. Name				

~~City, Village or~~ Town of Lincoln  
 County of Monroe  
Wisconsin