

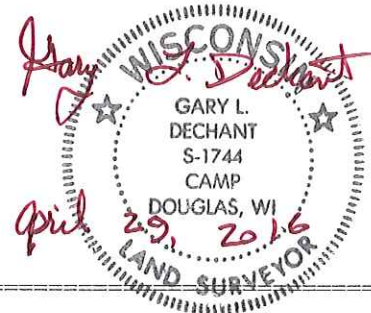
82

**U.S. PUBLIC LAND CORNER
MAINTENANCE**

**Corner ID : S1/4 Sec. 24, T19N-R2W
21902240020**

DATE	CREW	MONUMENT TYPE -----
April 29, 2016	Zachariah P.Dechant Gary L. Dechant	Found Railroad spike over Harrison at intersection of Cheyenne Road & Cinder Ave. Town of Grant informed us that they were going to reshape this intersection
<u>References:</u>		<u>Bearing</u> <u>Distance</u>
1) Set 3/4"x24" round iron bar, down 12" in field		N55E 84.90'
2) Set 3/4" x 24" round iron bar, down 12" in field, 6" easterly of wood fence post along east road r/w		S20E 78.45'
3) Set 3/4" x24" round iron bar, down 6", 6' north of 22" White Pine		S55W 44.64'
4) Set 3/4" x 24" round iron bar, down 10", 6' west of south end of gate		N20W 99.55'

Harrison and reference markers set on straight lines.



I, Garold A. Sime, do hereby certify that on the _____ day of _____ 19____, I found (evidence) ~~(no evidence)~~ of the N¹/₄ corner of Section 25, T 19 N, R 2 W Fourth Principal Meridian, and I re-established said corner according to the Wisconsin Statutes as shown and described hereon.

Dated this 11th day of Jan. 19 79.

Garold A. Sime, R.L.S. 1261

Crew Chief, County Surveyor's
Title Office

History of original corner establishment:

A. S. Ingalls was at this corner in April of 1873.

Description of corner evidence found:

Removed existing iron pipe and set Harrison Monument.

**See Reverse Side
For Maintenance**

Description of corner and witness monuments, references and accessories used to perpetuate the original or re-established location of this corner:

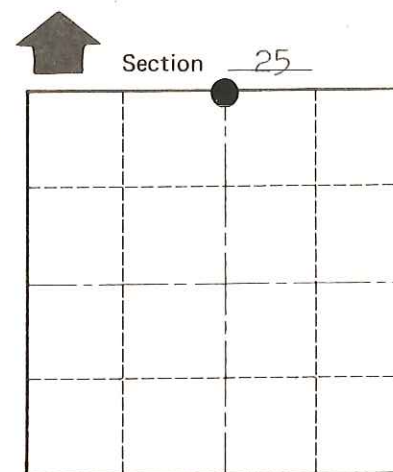
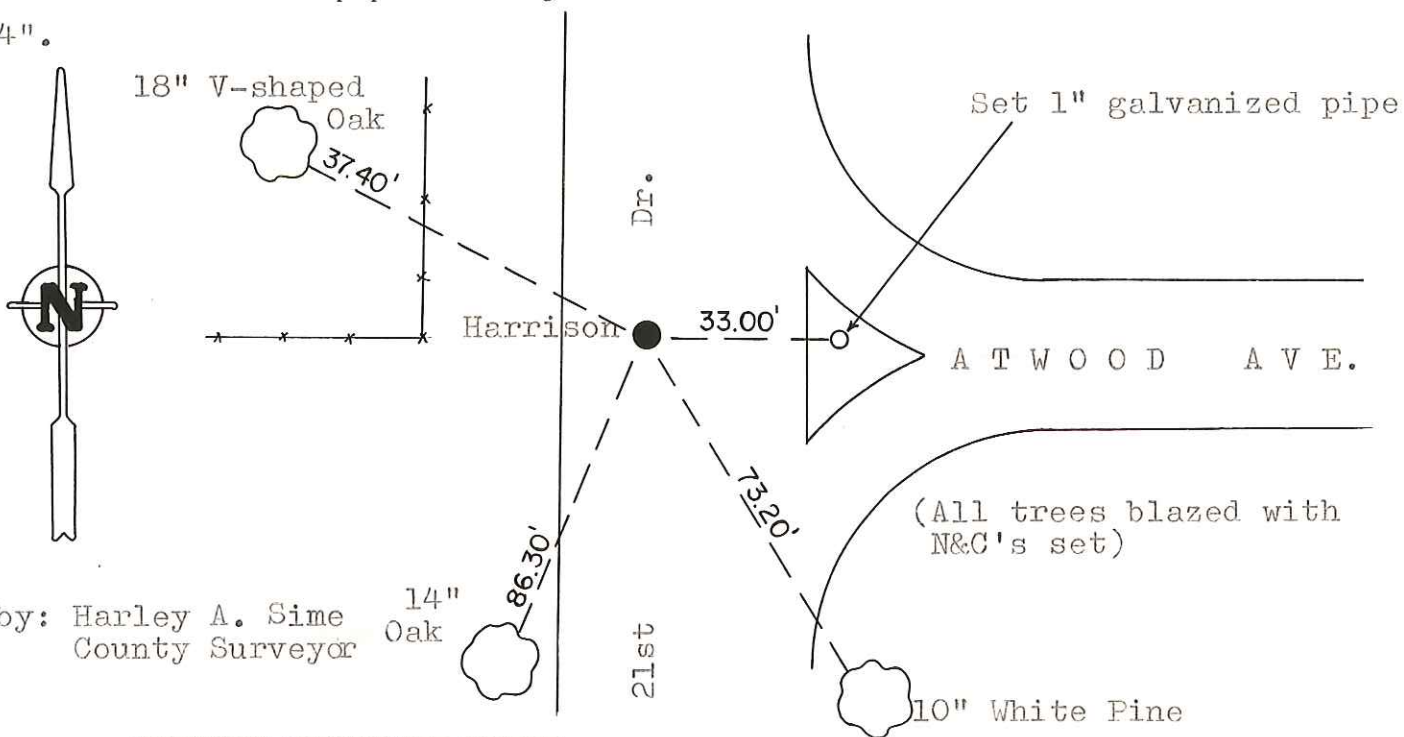
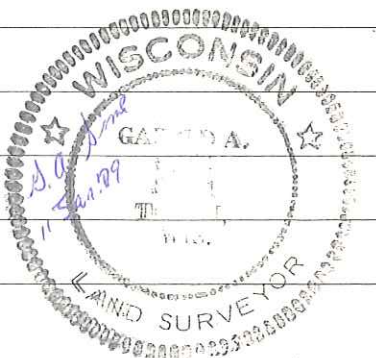
Set Harrison Monument, down 4".

Witnesses to corner location:

G. Sime

D. Dade

B. Meyer



• = LOCATION CORNER
T 19 N R 2 W
WISCONSIN

SURVEY CONTROL ORDER

Horizontal	_____
Vertical	_____

Approved by: Harley A. Sime
County Surveyor

WISCONSIN COORDINATE SYSTEM

Corner	East (X)	North (Y)	Elevation (Z)	Zone
Control Sta. Name				

City, Village or Town Grant

County of Monroe

COUNTY SURVEYOR FORM NO. 1