

**21902232000**

I, William C. Jung, do hereby certify that on the 11 th day of September, 1982, I found (evidence) ~~no evidence~~ of the East 1/4 corner of Section 23, T19 N, R 2 W Fourth Principal Meridian, and I re-established said corner according to the Wisconsin Statutes as shown and described hereon.

Dated this 23rd day of Feb., 1983.

*William C. Jung*

Deputy County Surveyor

Title

History of corner establishment since Original Government Survey

W. Kenyon was at this corner in June of 1885. A survey crew from Harley Sime's office set an iron bar at this corner in 1973. The bar at the fence corner was then used in further survey work in Section 23.

Description of corner evidence found:

I accepted the occupied fence corner as the best available evidence of the original government corner. I removed the existing 3/4" round iron bar and replaced it with a Harrison marker.

Approved: **HARLEY A. SIME**  
**MONROE CO. SURVEYOR**

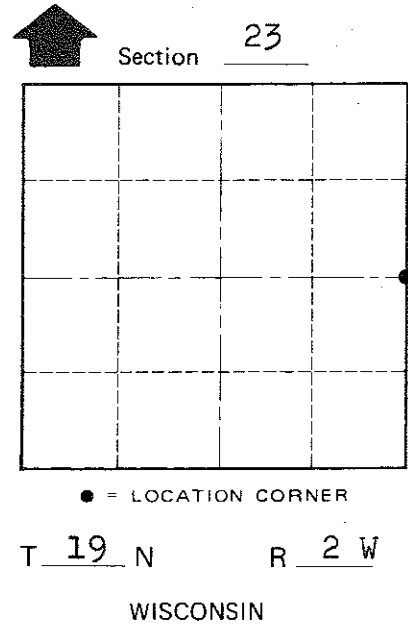
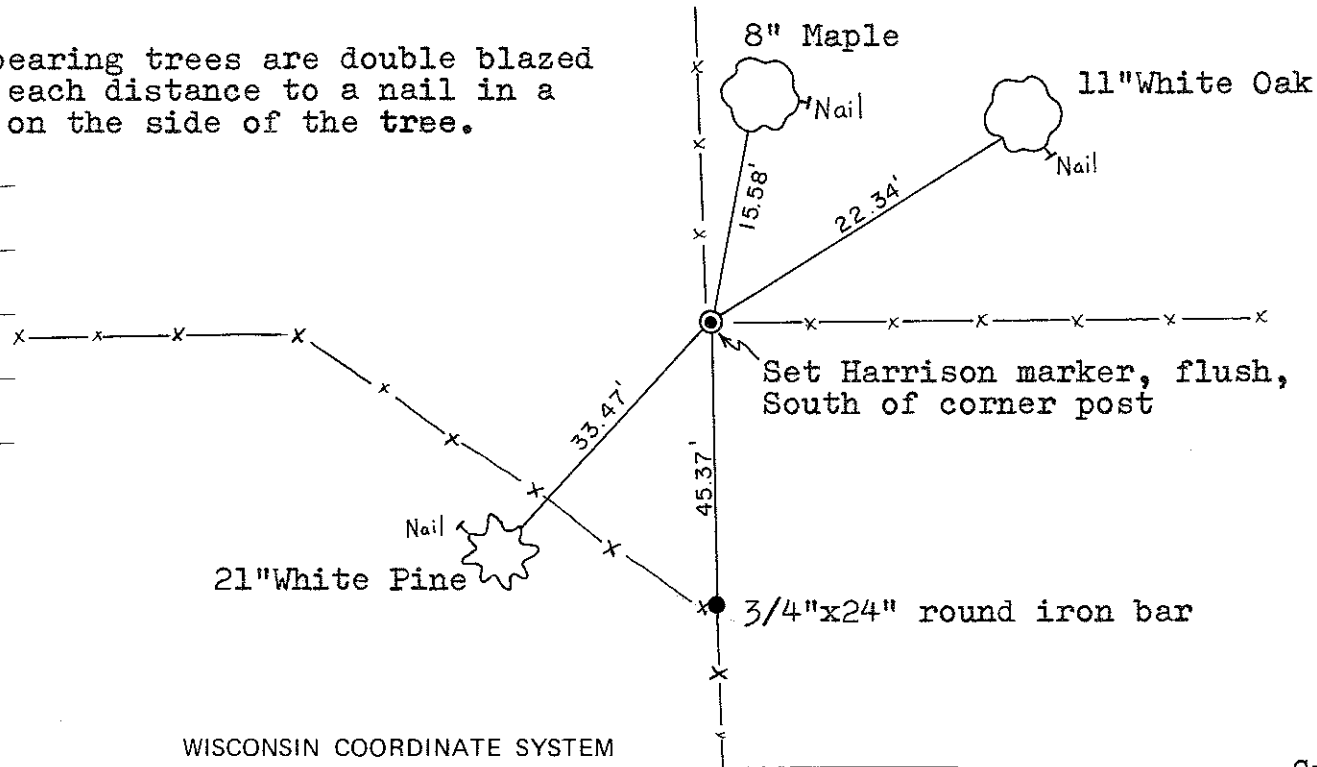
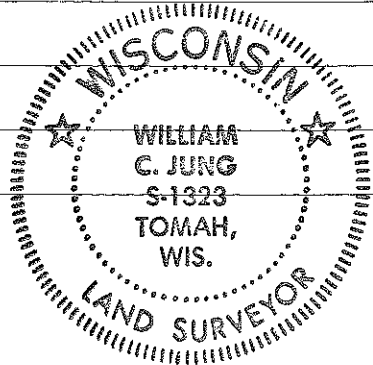
Description of corner and witness monuments, references and accessories used to perpetuate the original or re-established location of this corner:

Note: All bearing trees are double blazed with each distance to a nail in a hack on the side of the tree.

Witnesses to corner location:

William Jung

Bryan Meyer



COUNTY SURVEYOR FORM NO. 1

SURVEY CONTROL ORDER

Horizontal	_____
Vertical	_____

WISCONSIN COORDINATE SYSTEM

Corner	East (X)	North (Y)	Elevation (Z)	Zone
Control Sta. Name				

City, Village or Town Grant  
County of Monroe