

CERTIFICATE

CERTIFIED LAND CORNER

No. 77 B

2190222020

I, William C. Jung, do hereby certify that on the 31st day of March 1978, I found (evidence) (~~no evidence~~) of the 0 1/4 corner of Section 22, T 19 N, R 2 W Fourth Principal Meridian, and I re-established said corner according to the Wisconsin Statutes as shown and described hereon.

Dated this 21st day of Nov. 1978.

William C. Jung, R.L.S. 1323

Crew Chief, County Surveyor's
Title Office

History of original corner establishment:

No known recorded history since the original government survey.

Description of corner evidence found:

Found an iron bar set at the intersection of the quarter lines.

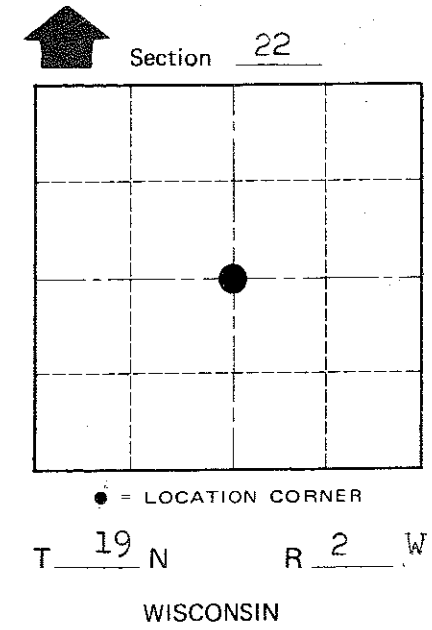
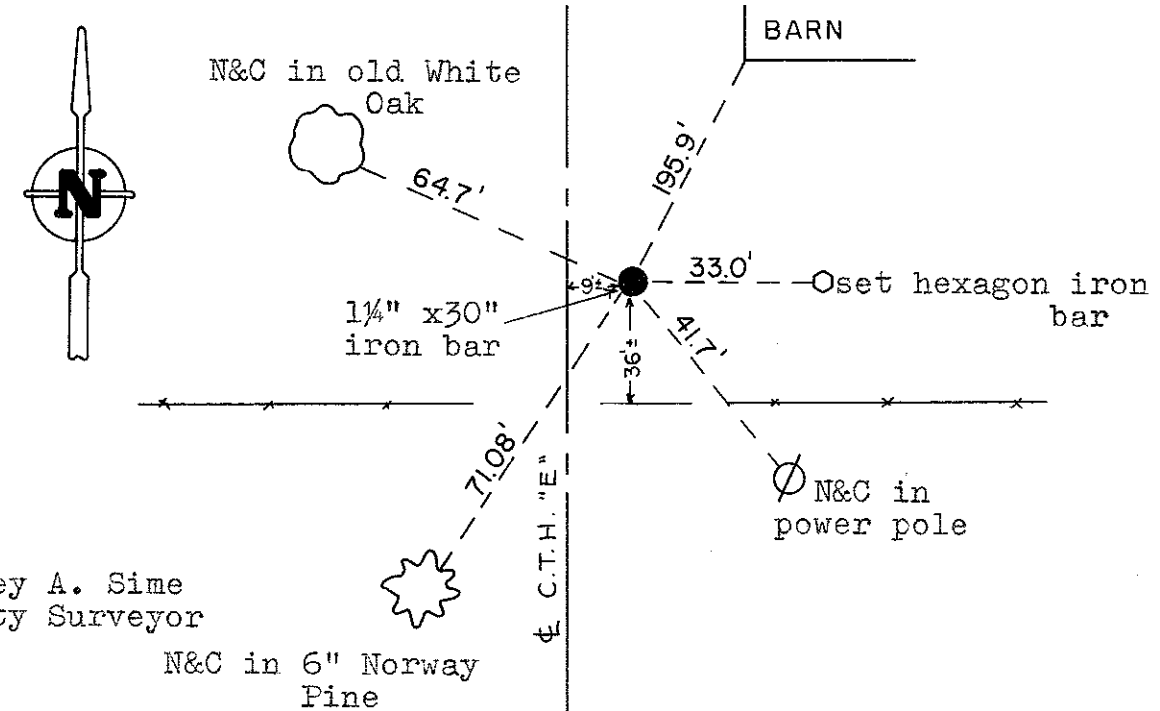
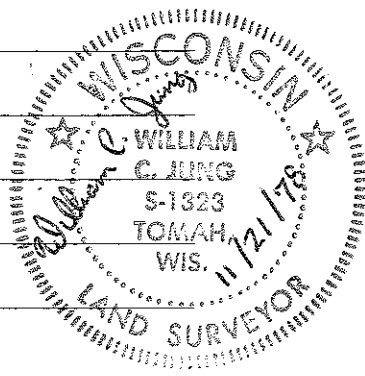
Description of corner and witness monuments, references and accessories used to perpetuate the original or re-established location of this corner:

Found bent 1/4" iron bar, down 3'+. Set 1 1/4"x30" iron bar over the top of it.

Witnesses to corner location:

W. Jung

G. Dechant



Approved by: Harley A. Sime
County Surveyor

N&C in 6" Norway Pine

WISCONSIN COORDINATE SYSTEM

SURVEY CONTROL ORDER

Horizontal	_____
Vertical	_____

Corner	East (X)	North (Y)	Elevation (Z)	Zone
Control Sta. Name				

City, Village or Town Grant
County of Monroe

COUNTY SURVEYOR FORM NO. 1