

86

**U.S. PUBLIC LAND CORNER
MAINTENANCE**

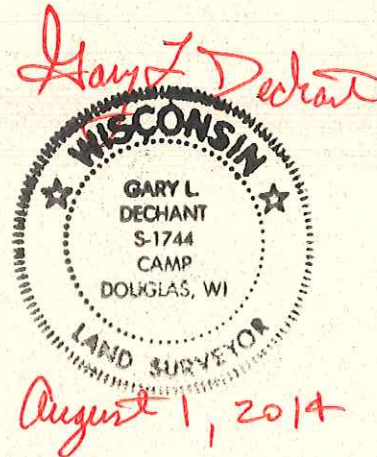
Corner ID : S1/4 Sec.22, T19N-R2W

21902220020

DATE	CREW	MONUMENT TYPE -----
August 1, 2014	Zachariah P.Dechant Gary L. Dechant	Found Harrison in small stone pile at remnants of fence corner. Steel post 1/2' north, survey sign 1/2' west 173' east of intersection of CTH "E" & Century Ave.

References:

	<u>Bearing</u>	<u>Distance</u>
1) Set 3/4"x24" hex iron bar, down 6"	S60E	39.25'
2) Set 1/4"x8"round iron bar, down 6"	S45E	17.53'
3) Set 3/4"x24" hex iron bar, down down 6", 5' north of 6" White Pine	S65W	23.08'
4) Set 1/4"x24" round iron bar, down 6"	N35W	17.71'



COORDINATES:

I, Bryan H. Meyer, do hereby certify that on the 29th day of December 1989, I found (evidence) ~~no evidence~~ of the North 1/4 corner of Section 27, T 19 N, R 2 W Fourth Principal Meridian, and I re-established said corner according to the Wisconsin Statutes as shown and described hereon.

Dated this 2nd day of Jan. 1990.

Bryan H. Meyer
Deputy County Surveyor
Title

History of corner establishment since Original Government Survey

Fred Holden was here in November of 1906. A crew from H. A. Sime and Associates was here in 1973, found a 1 1/2" iron pipe and used it as the corner.

Description of corner evidence found:

I found the 1 1/2" iron pipe mentioned above and accepted it as the corner.

See Reverse Side For Maintenance



H. A. Sime and Associates
P. O. Box 705, Tomah, WI
Phone: (608)-372-5392

COUNTY SURVEYOR FORM NO. 1

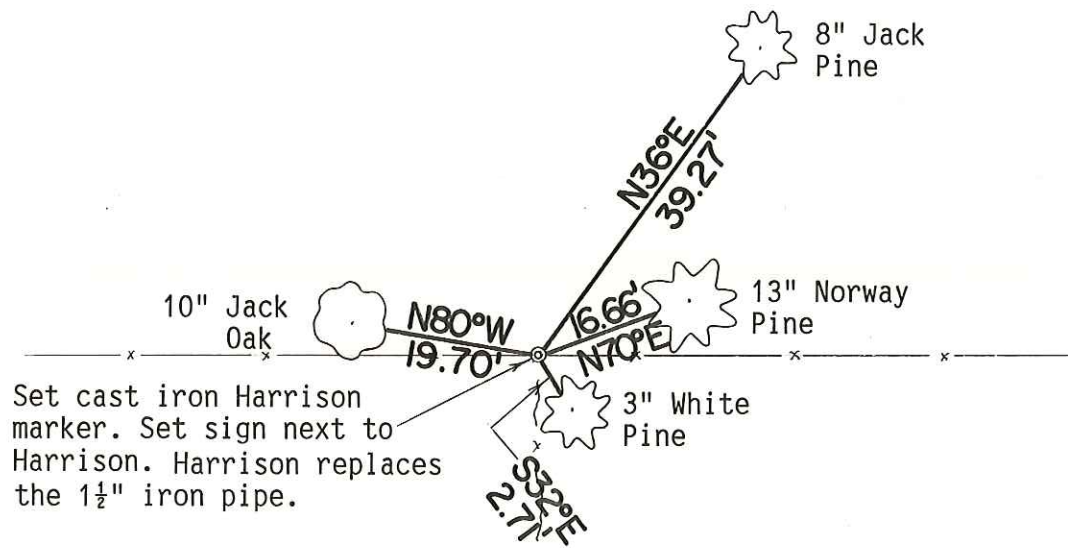
Description of corner and witness monuments, references and accessories used to perpetuate the original or re-established location of this corner:

Crew: Kenworthy, Forsythe
Date: December 29, 1989
Weather: Cloudy, Drizzle, 26°±
Witnesses to corner location:

John Kenworthy

Brian Forsythe

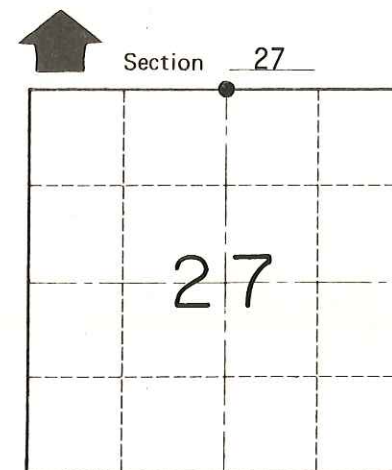
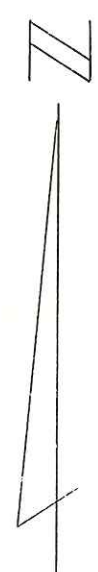
Bryan H. Meyer



Set cast iron Harrison marker. Set sign next to Harrison. Harrison replaces the 1 1/2" iron pipe.

The bearings shown hereon are magnetic hand compass bearings.

The four trees shown are double blazed; the distance to each is to a nail set in a hack in the side of each tree.



O = LOCATION CORNER
T 19 N R 2 W
WISCONSIN

SURVEY CONTROL ORDER

Horizontal	_____
Vertical	_____

WISCONSIN COORDINATE SYSTEM

Corner	East (X)	North (Y)	Elevation (Z)	Zone
Control Sta. Name				

~~City, Village or~~ Town of Grant
County of Monroe