

CERTIFICATE

I, Nicholas M. Hillmer, do hereby certify that this document and the data contained herein was prepared by me or under my direct supervision and that I am a duly Licensed Land Surveyor under the laws of the State of Wisconsin.

Dated this 21st day of May, 2013



Nicholas M. Hillmer, P.L.S. 2909
Anderson Engineering of Minnesota, LLC.

CERTIFIED LAND CORNER

History of corner established since Original Government Survey

In 1978 William Jung found a 3/4 inch iron bar used in previous survey work. Jung replaced the bar with a Harrison monument. While setting the Harrison, Jung found an old iron monument 15 inches to the north and buried.

Description of evidence found

On December 19th, 2012, Anderson Engineering of Minnesota located the Harrison monument.

No. 21902212000



Description of corner and witness monuments, references and accessories used to perpetuate the original or re-established location of this corner:

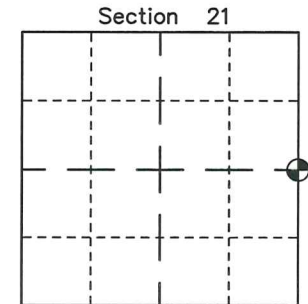
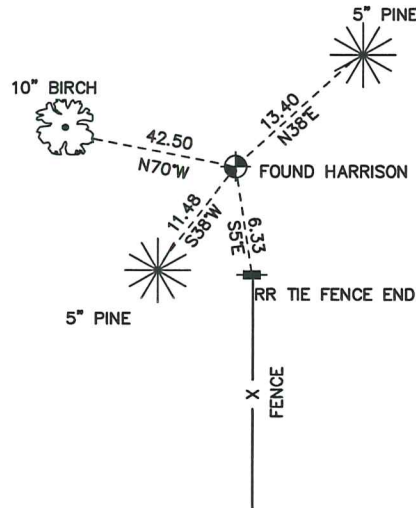
Witnesses to corner location:

Nick Hillmer
Josh Oslund
Dan Greenwald

MONROE COUNTY
COORDINATE SYSTEM
NAD 1983 (2007)

HARRISON MONUMENT
Northing (Y) 439573.95
Easting (X) 678363.47

Base Station - 22 182W
Northing (Y) 408053.25
Easting (X) 679287.00



⊙ = LOCATION CORNER
Corner I.D. E 1/4 21
T 19 N R 2 W
Town of Grant
Monroe County, WI.

All distances are shown in U.S. Survey Feet.
Ties are to 60D nails.
Bearings are for tie reference purposes only.
Coordinates were derived from RTK GNSS procedures.

CERTIFICATE

CERTIFIED LAND CORNER

No. 77

21902212000

I, William C. Jung, do hereby certify that on the 31st day of March 1978 I found (evidence) (~~no evidence~~) of the W 1/4 corner of Section 22, T 19 N, R 2 W, Fourth Principal Meridian, and I re-established said corner according to the Wisconsin Statutes as shown and described hereon.

History of original corner establishment:

No known recorded history since the original government survey.

Dated this 2nd day of May 1978.

Description of corner evidence found:

Found a 3/4" iron bar used in previous survey work. Replaced the bar with a Harrison Monument. While setting the Harrison, we found an old iron monument 15" to the North and buried.

William C. Jung, R.L.S. 1323

Crew Chief, County Surveyor's
Title Office

COUNTY SURVEYOR FORM NO. 1

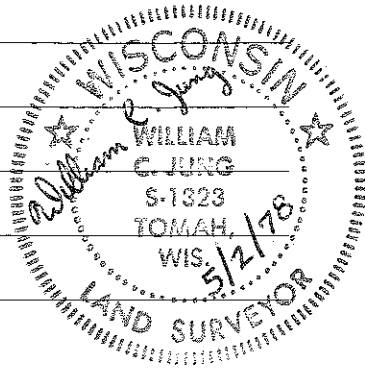
Description of corner and witness monuments, references and accessories used to perpetuate the original or re-established location of this corner:

Witnesses to corner location:

W. Jung

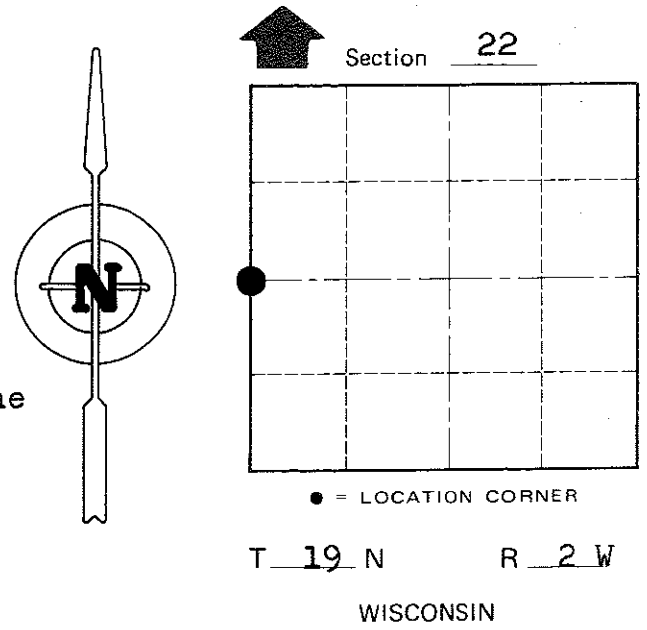
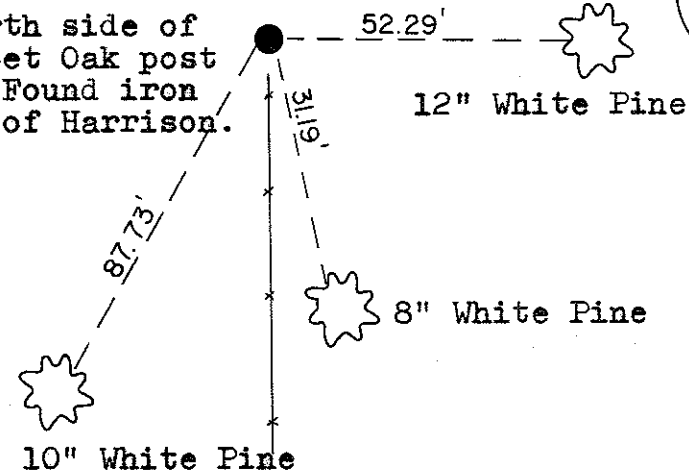
G. Dechant

(All trees double blazed and with nail and caps set)



SIGN PLACED 12-04-89 *H.S.*

Set Harrison on North side of Birch tree stump. Set Oak post North of Harrison. Found iron monument 15" North of Harrison.



Approved by: Harley A. Sime
County Surveyor

SURVEY CONTROL ORDER

Horizontal	_____
Vertical	_____

WISCONSIN COORDINATE SYSTEM

Corner	East (X)	North (Y)	Elevation (Z)	Zone
Control Sta. Name				

City, Village or Town Grant
County of Monroe