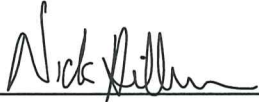


**CERTIFICATE**

I, Nicholas M. Hillmer, do hereby certify that this document and the data contained herein was prepared by me or under my direct supervision and that I am a duly Licensed Land Surveyor under the laws of the State of Wisconsin.

Dated this 21st day of May, 2013



Nicholas M. Hillmer, P.L.S. 2909  
Anderson Engineering of Minnesota, LLC.

**CERTIFIED LAND CORNER**

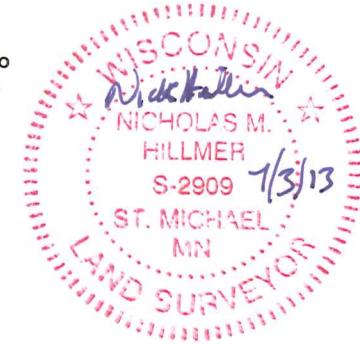
**History of corner established since Original Government Survey**

Fred Holden was here in November of 1906. The 1940's McCoy boundary notes show a corner at this location. H.A Sime and Associates were here in 1973 and set a 3/4 inch iron bar at a two way fence corner. In December of 1989 Bryan Meyer found the 3/4 inch bar and replaced it with a 1 1/2 inch iron pipe.

**Description of evidence found**

On December 19th, 2012, Anderson Engineering of Minnesota located the 1 1/2 inch open pipe 1.2 feet above grade. A witness post with sign was found 0.3 feet northwest of the pipe. On April 21st, 2013, Anderson Engineering of Minnesota replaced the pipe with a 3/4 inch aluminum drive monument with a 3 1/4 inch cap, stamped "FORT MCCOY BOUNDARY" "2013" "ANDERSON ENG. OF MN."

No. 21902210000



Description of corner and witness monuments, references and accessories used to perpetuate the original or re-established location of this corner:

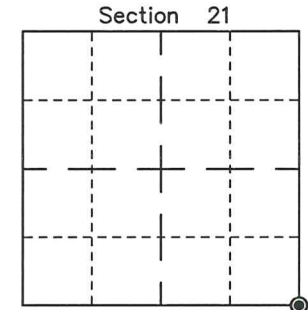
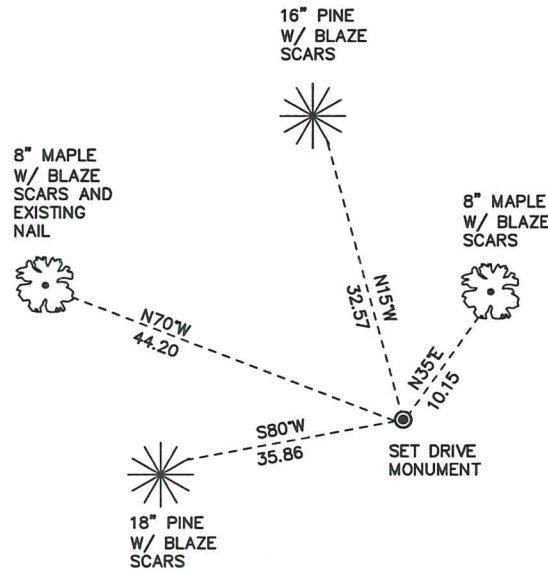
Witnesses to corner location:

Nick Hillmer  
Josh Oslund  
Dan Greenwald

MONROE COUNTY  
COORDINATE SYSTEM  
NAD 1983 (2007)

MCCOY DRIVE MONUMENT  
Northing (Y) 436948.44  
Easting (X) 678353.42

Base Station - 22 182W  
Northing (Y) 408053.25  
Easting (X) 679287.00



● = LOCATION CORNER  
Corner I.D. SE 21  
T 19 N R 2 W  
Town of Grant  
Monroe County, WI.

All distances are shown in U.S. Survey Feet.  
Ties are to 60D nails set in trees.  
Bearings are for tie reference purposes only.  
Coordinates were derived from RTK GNSS procedures.

21902210000



H. A. Sime and Associates  
P. O. Box 705, Tomah, WI  
Phone: (608)-372-5392

I, Bryan H. Meyer, do hereby certify that on the 29th day of December 19 89, I found (evidence) ~~no evidence~~ of the Northwest corner of Section 27, T 19 N, R 2 W Fourth Principal Meridian, and I re-established said corner according to the Wisconsin Statutes as shown and described hereon.

Dated this 2nd day of Jan. 19 90.

*Bryan H. Meyer*

Deputy County Surveyor  
Title

History of corner establishment since Original Government Survey

Fred Holden was here in November of 1906. A crew from Camp (Fort) McCoy did some surveying for the McCoy boundary sometime in the mid 1940s and calls for an "iron stake" at the corner. A crew from H. A. Sime and Associates was here in 1973 and set a 3/4" iron bar at a two-way fence corner.

Description of corner evidence found:

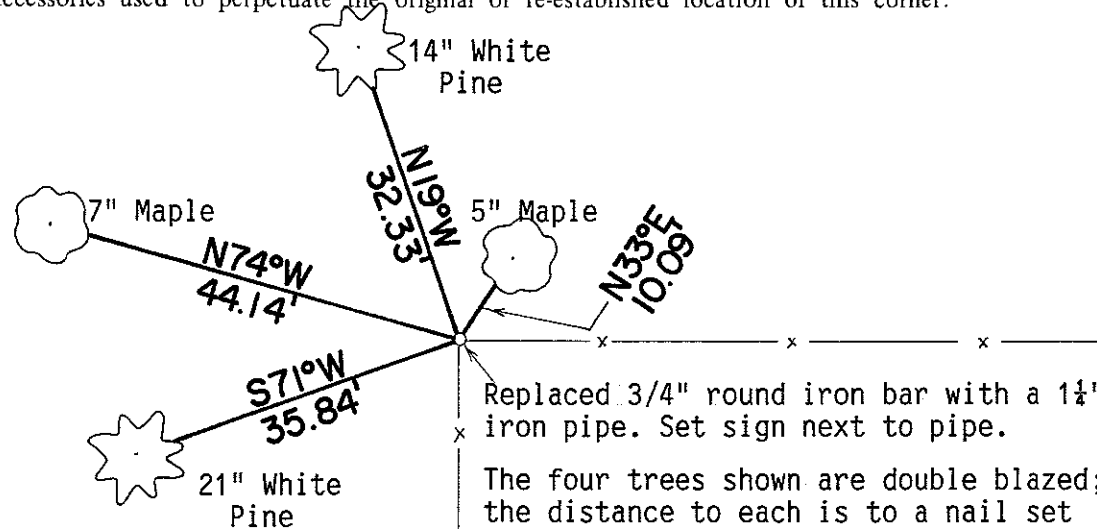
I found a 3/4" round iron bar at a two-way fence corner and accepted it as the corner. I searched the area for evidence of the "iron stake" called for in the McCoy notes but, was unable to find it.

COUNTY SURVEYOR FORM NO. 1

Description of corner and witness monuments, references and accessories used to perpetuate the original or re-established location of this corner:

Crew: Kenworthy, Forsythe  
Date: December 29, 1989  
Weather: Cloudy, Drizzle, 26°±  
Witnesses to corner location:

John Kenworthy  
Brian Forsythe  
Bryan H. Meyer

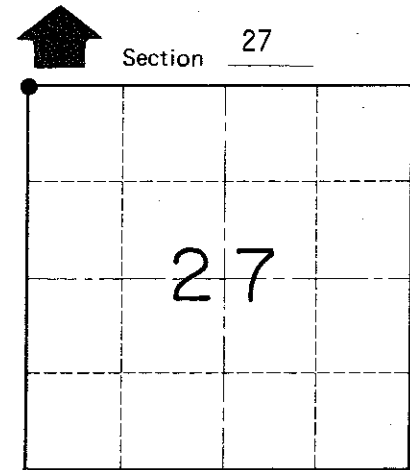


Replaced 3/4" round iron bar with a 1 1/4" iron pipe. Set sign next to pipe.

The four trees shown are double blazed; the distance to each is to a nail set in a hack in the side of each tree.

The bearings shown hereon are magnetic hand compass bearings.

The fences shown are in poor condition.



● = LOCATION CORNER  
T 19 N R 2 W  
WISCONSIN

SURVEY CONTROL ORDER

Horizontal	_____
Vertical	_____

WISCONSIN COORDINATE SYSTEM

Corner	East (X)	North (Y)	Elevation (Z)	Zone
Control Sta. Name				

~~City, Village or~~ Town of Grant  
County of Monroe