

CERTIFICATE

I, Nicholas M. Hillmer, do hereby certify that this document and the data contained herein was prepared by me or under my direct supervision and that I am a duly Licensed Land Surveyor under the laws of the State of Wisconsin.

Dated this 21st day of May, 2013



Nicholas M. Hillmer, P.L.S. 2909
Anderson Engineering of Minnesota, LLC.

CERTIFIED LAND CORNER

History of corner established since Original Government Survey

In October of 1901 Fred Holden set a stone at this corner. In October of 1914 Keach set a pump point at this corner. The 1940's McCoy boundary notes show a corner at this location. In 1973-1974 Larry Feddersen "tied" into this corner and used it as the corner. In November of 1982 William Jung found and accepted a McCoy boundary marker as the best available evidence of the corner.

Description of evidence found

On November 28th, 2012, Anderson Engineering of Minnesota located the McCoy monument, a 4 inch U.S. Army Corps of Engineers survey control mark disk set in concrete 0.4 feet above grade. The disk is stamped MCCOY BOUNDARY. A 4 inch square wood witness post is 1.0 foot west of the disk.

No. 21902162000



Description of corner and witness monuments, references and accessories used to perpetuate the original or re-established location of this corner:

Witnesses to corner location:

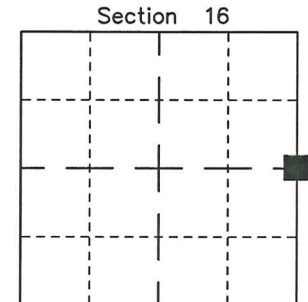
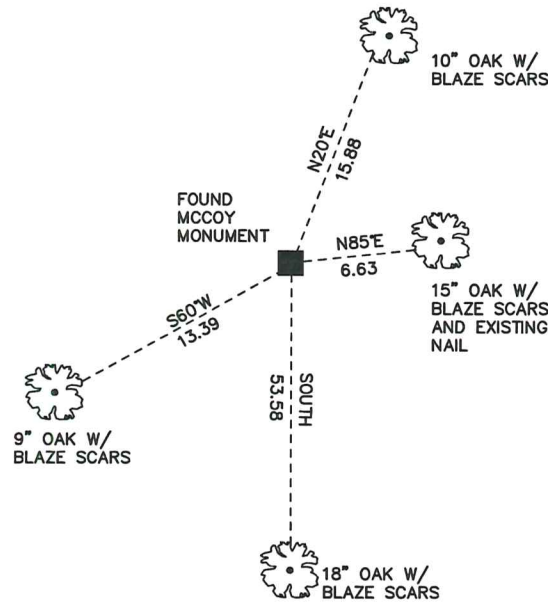
Dan Greenwald
Josh Oslund

MONROE COUNTY
COORDINATE SYSTEM
NAD 1983 (2007)

MCCOY MONUMENT
Northing (Y) 444774.18
Easting (X) 678359.73

Base Station - 22 182W
Northing (Y) 408053.25
Easting (X) 679287.00

All distances are shown in U.S. Survey Feet.
Ties are to 60D nails set in trees.
Bearings are for tie reference purposes only.
Coordinates were derived from RTK GNSS procedures.



■ = LOCATION CORNER
Corner I.D. E 1/4 16
T 19 N R 2 W
Town of Grant
Monroe County, WI.

21902162000

I, William C. Jung, do hereby certify that on the 29th day of November 19 82, I found (evidence) ~~no evidence~~ of the West 1/4 corner of Section 15, T 19 N, R 2 W Fourth Principal Meridian, and I re-established said corner according to the Wisconsin Statutes as shown and described hereon.

Dated this 21st day of Dec. 19 82.

William C. Jung

Deputy County Surveyor

Title

History of corner establishment since Original Government Survey

In October of 1901 Holden set a stone at this corner. In October of 1914 Keach set a pump point at this corner. According to the McCoy boundary notes, this corner was probably monumented during WWII. In 1973-1974, Larry Feddersen (while with Sime and Associates) "tied" into this corner and used it as the 1/4 corner.

Description of corner evidence found:

I found a McCoy boundary marker. I searched at some length but could not find Holden's stone or Keach's pump point. I accepted the old McCoy marker as the best available evidence of the 1/4 corner.

Approved: HARLEY A. SIME
MONROE CO. SURVEYOR

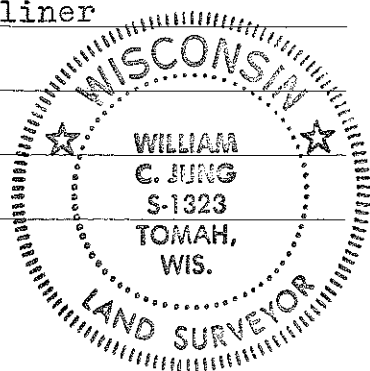
COUNTY SURVEYOR FORM NO. 1

Description of corner and witness monuments, references and accessories used to perpetuate the original or re-established location of this corner:

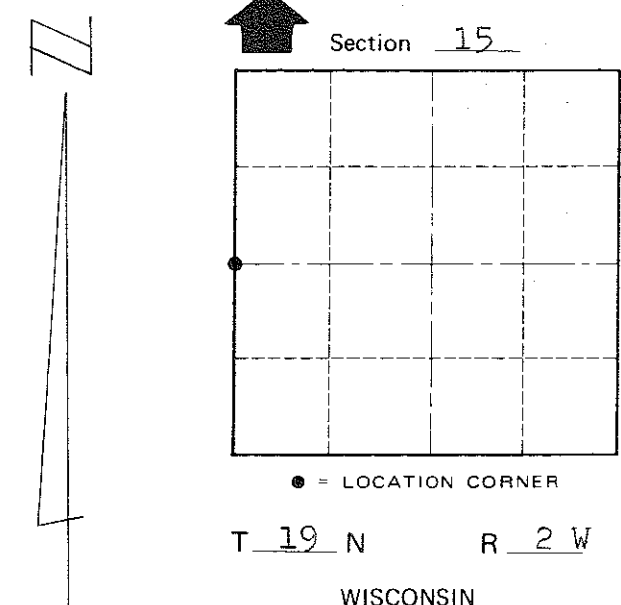
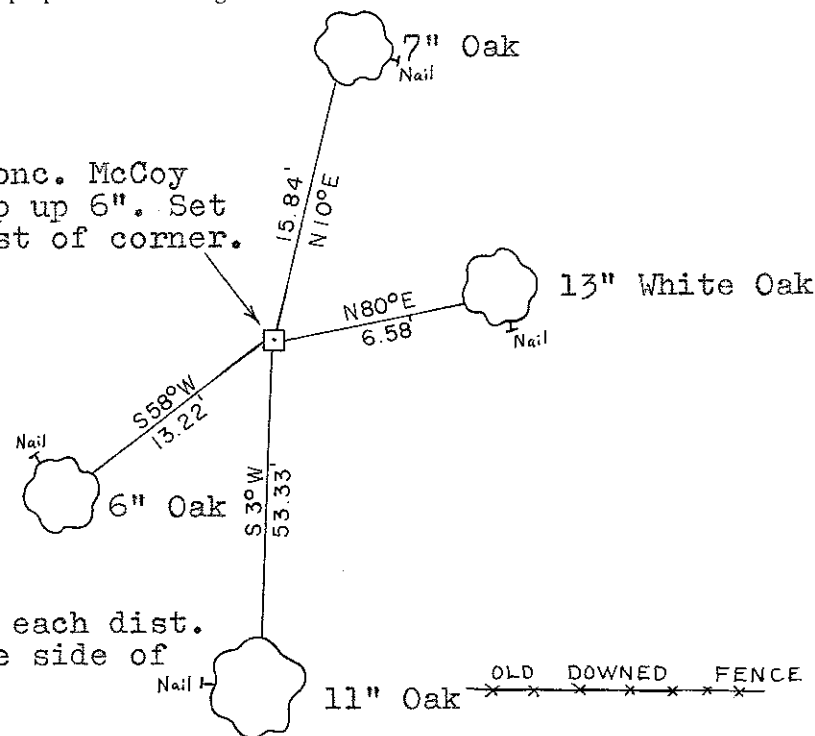
Witnesses to corner location:

William C. Jung

Melvin A. Pliner



Found 6"x6" sq. conc. McCoy marker w/brass cap up 6". Set 4"x4" post, 1' West of corner.



All B.T.'s double blazed; each dist. to a nail in a hack on the side of the tree.

SURVEY CONTROL ORDER

Horizontal	_____
Vertical	_____

WISCONSIN COORDINATE SYSTEM

Corner	East (X)	North (Y)	Elevation (Z)	Zone
Control Sta. Name				

~~City, Village or~~ Town of Grant
County of Monroe