

CERTIFICATE

I, Nicholas M. Hillmer, do hereby certify that this document and the data contained herein was prepared by me or under my direct supervision and that I am a duly Licensed Land Surveyor under the laws of the State of Wisconsin.

Dated this 21st day of May, 2013



Nicholas M. Hillmer, P.L.S. 2909
Anderson Engineering of Minnesota, LLC.

CERTIFIED LAND CORNER

History of corner established since Original Government Survey

In October of 1914 Keach set a pump point at this corner. The 1940's McCoy boundary notes show a corner at this location. In 1973-1974, Larry Feddersen computed a location for this corner, but the corner was never set. In November of 1982 William Jung found a McCoy boundary marker and accepted it as the best available evidence of the corner.

Description of evidence found

On November 28th, 2012, Anderson Engineering of Minnesota located the McCoy monument, a 4 inch U.S Army Corps of Engineers survey control mark disk set in concrete 1.0 foot below grade. An old barbed wire fence running north-south was found 0.5 feet east of the disk. The mark is 10 feet east of a berm that runs north-south. A 3 inch square wood post was found 0.4 feet north of the disk. A witness post with a survey marker sign was found 1.0 foot south of the disk.

No. 21902160000



Description of corner and witness monuments, references and accessories used to perpetuate the original or re-established location of this corner:

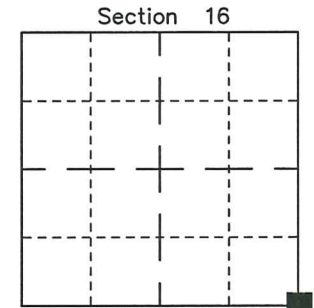
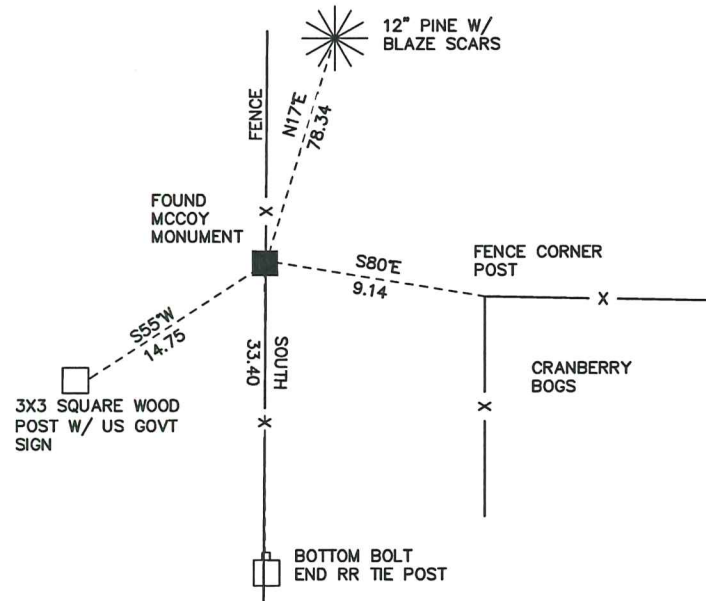
Witnesses to corner location:

Nick Hillmer
Josh Oslund
Dan Greenwald

MONROE COUNTY
COORDINATE SYSTEM
NAD 1983 (2007)

MCCOY MONUMENT
Northing (Y) 442164.30
Easting (X) 678367.25

Base Station - 22 182W
Northing (Y) 408053.25
Easting (X) 679287.00



■ = LOCATION CORNER
Corner I.D. SE 16
T 19 N R 2 W
Town of Grant
Monroe County, WI.

All distances are shown in U.S. Survey Feet.
Ties are to 60D nails set in trees.
Bearings are for tie reference purposes only.
Coordinates were derived from RTK GNSS procedures.

2190216000

I, William C. Jung, do hereby certify that on the 29th day of November 1982, I found (evidence) ~~XXXXXXXXXX~~ of the Southwest corner of Section 15, T 19 N, R 2 W Fourth Principal Meridian, and I re-established said corner according to the Wisconsin Statutes as shown and described hereon.

History of corner establishment since Original Government Survey

In October of 1914, Keach set a pump point at this corner. According to the McCoy boundary notes, a McCoy boundary marker was set at this corner during WWII. In 1973-1974, Larry Feddersen (while with Sime and Associates) computed a location for this corner, but the corner was never set.

Description of corner evidence found:

I found a McCoy boundary marker. I searched at some length but could not find Keach's pump point. I accepted the old McCoy marker as the best available evidence of the section corner.

Dated this 21st day of Dec. 1982.

William C. Jung

Deputy County Surveyor

Title

Approved: **HARLEY A. SIME**
MONROE CO. SURVEYOR

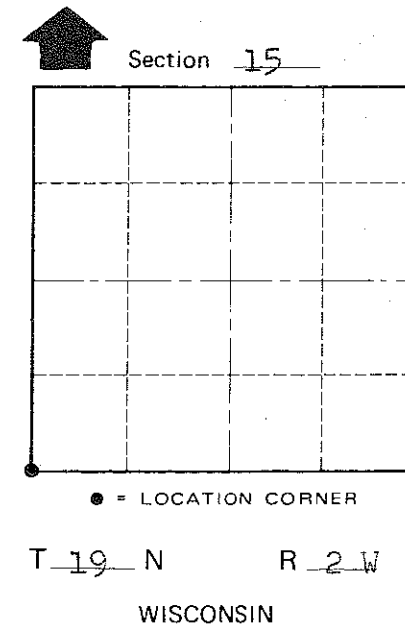
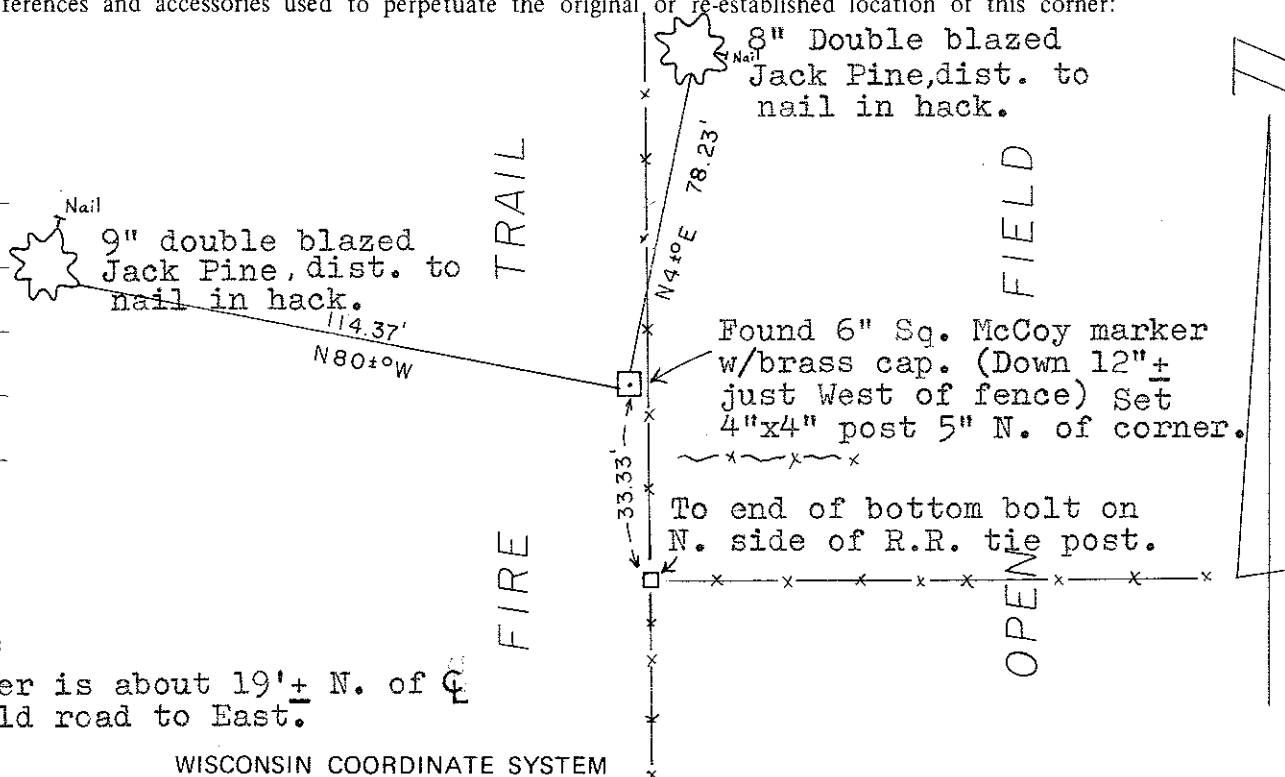
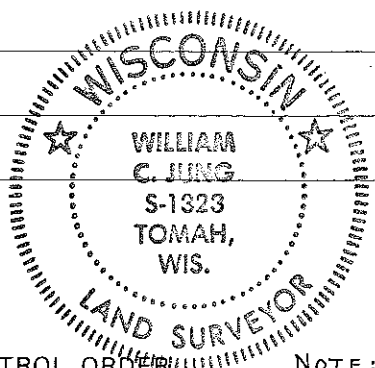
COUNTY SURVEYOR FORM NO. 1

Description of corner and witness monuments, references and accessories used to perpetuate the original or re-established location of this corner:

Witnesses to corner location:

William C. Jung

Melvin A. Pliner



NOTE: Corner is about 19'+ N. of C of old road to East.

WISCONSIN COORDINATE SYSTEM

Corner	East (X)	North (Y)	Elevation (Z)	Zone
Control Sta. Name				

~~City, Village~~ Town of Grant
County of Monroe