

#66

U.S. PUBLIC LAND CORNER MAINTENANCE

Corner ID : S1/4 Sec.15, T19N-R2W

21902150020

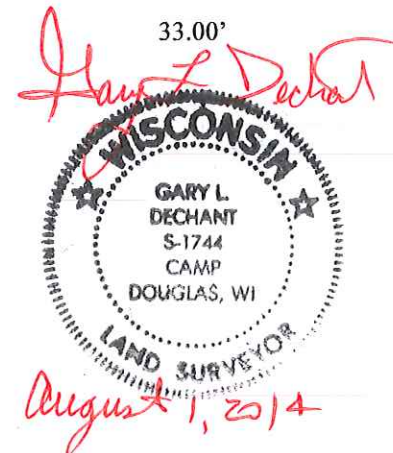
DATE	CREW	MONUMENT TYPE
August 1, 2014	Zachariah P. Dechant Gary L. Dechant	Found Harrison 4' east & 23' south of road intersection Falls alongside a steel culvert. Old school house 189.2' NW 18" White Oak 52.48' NE. All other ties destroyed or damaged

References:

	Bearing	Distance
1) Set 3/4"x24" hex iron bar, down 6"	N63E	44.02'
2) Set 3/4"x24" hex iron bar, down 6" in lawn, 15' west of 12" Red Pine 16' north of 6" Walnut	S41E	59.20'
3) Set 3/4"x24" hex iron bar, down down 6" in lawn	N41W	83.24'
4) Existing 1" iron pipe on section line	East	33.00'

Ties 2 and 3 are on straight line with Harrison.

COORDINATES:



I, William C. Jung, do hereby certify that on the 31st day of March 1978, I found ~~(evidence)~~ (no evidence) of the N $\frac{1}{4}$ corner of Section 22, T. 19 N, R. 2 W, Fourth Principal Meridian, and I re-established said corner according to the Wisconsin Statutes as shown and described hereon.

Dated this 21st day of Nov. 1978.

William C. Jung R.L.S. 1323
Crew Chief, County Surveyor's
Title Office

History of original corner establishment:

No known history since the original government survey.

**See Reverse Side
For Maintenance**

Description of corner evidence found:

Set the corner at a previously computed location as computed in previous survey work.

UPDATE: The County Surveyor's Office was notified by a local surveyor that he was having difficulty finding this corner. I located the corner and found it to be in good condition under 4"± of blacktop. I aquired two additional ties and fixed the existing sign and post.

Description of corner and witness monuments, references and accessories used to perpetuate the original or re-established location of this corner:

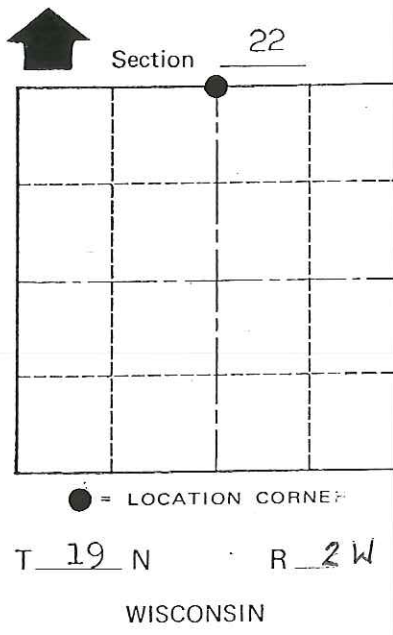
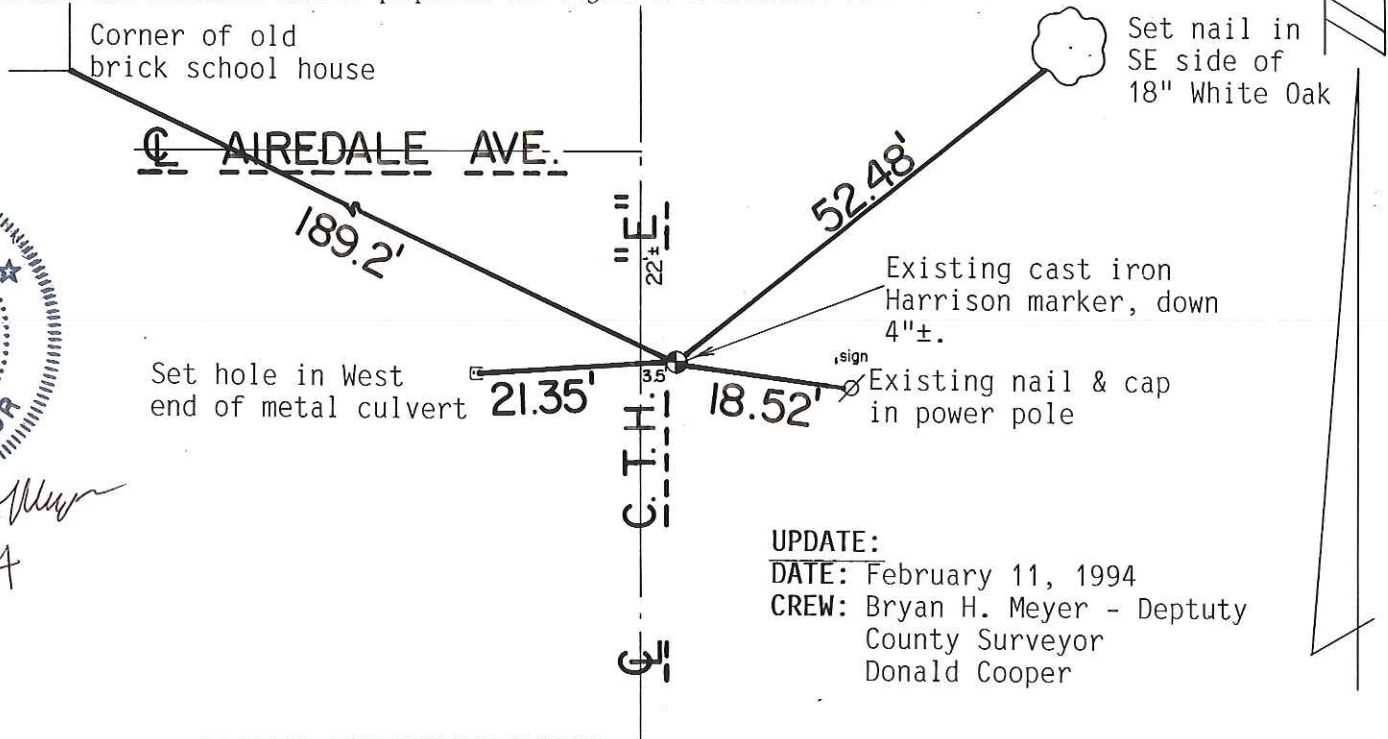
Witnesses to corner location:

W. Jung

G. Dechant



Bryan H. Meyer
3/8/94



UPDATE:
DATE: February 11, 1994
CREW: Bryan H. Meyer - Deputy
County Surveyor
Donald Cooper

SURVEY CONTROL ORDER

Horizontal	_____
Vertical	_____

WISCONSIN COORDINATE SYSTEM

Corner	East (X)	North (Y)	Elevation (Z)	Zone
Control Sta. Name				

City, Village or Town Grant
County of Monroe

COUNTY SURVEYOR FORM NO. 1

I, William C. Jung, do hereby certify that on the 31st day of March 1978, I found ~~(evidence)~~ (no evidence) of the N¹/₄ corner of Section 22, T 19 N, R 2 W, Fourth Principal Meridian, and I re-established said corner according to the Wisconsin Statutes as shown and described hereon.

Dated this 21st day of Nov. 1978.

William C. Jung R.L.S. 1323
 Crew Chief, County Surveyor's
 Title Office

History of original corner establishment:

No known history since the original government survey.

Description of corner evidence found:

Set the corner at a previously computed location as computed in previous survey work.

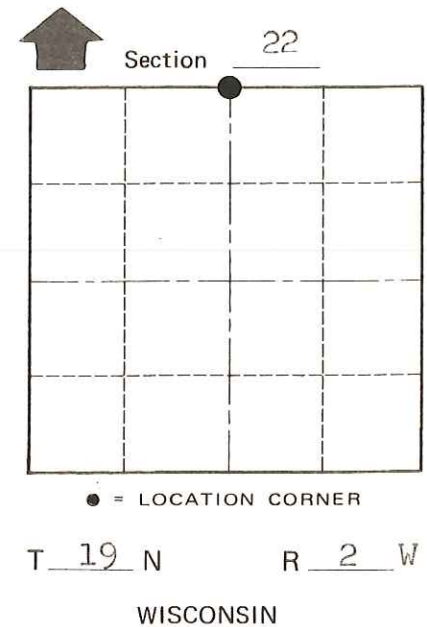
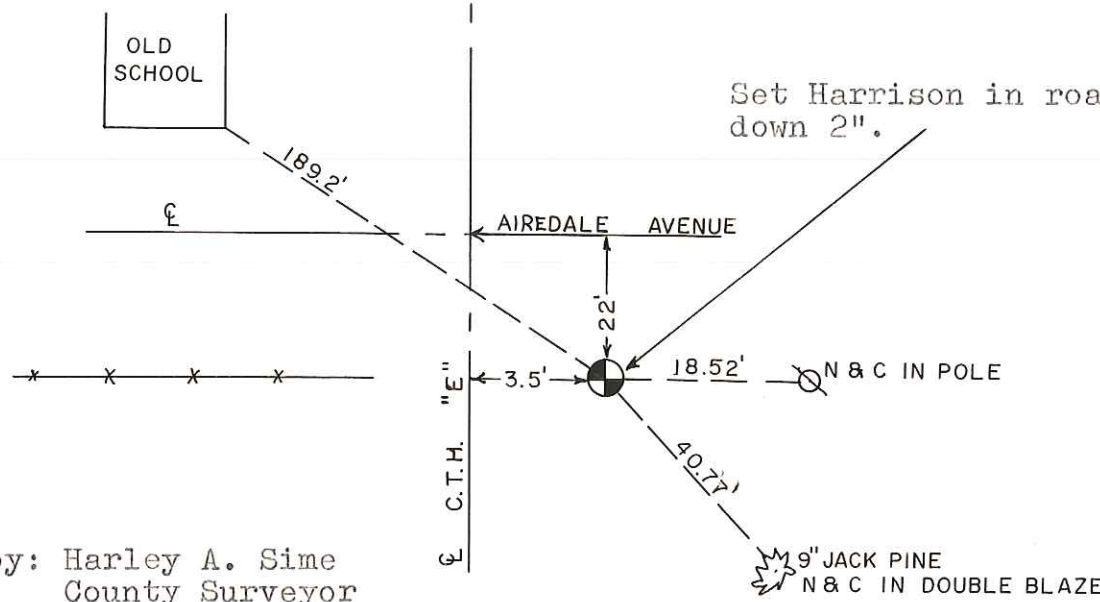
**See Reverse Side
For Maintenance**

Description of corner and witness monuments, references and accessories used to perpetuate the original or re-established location of this corner:

Witnesses to corner location:

W. Jung

G. Dechant



SURVEY CONTROL ORDER

Horizontal	_____
Vertical	_____

Approved by: Harley A. Sime
 County Surveyor

WISCONSIN COORDINATE SYSTEM

Corner	East (X)	North (Y)	Elevation (Z)	Zone
Control Sta. Name				

City, Village or Town Grant

County of Monroe

COUNTY SURVEYOR FORM NO. 1